

Market Report for the Week of September 28, 2020

Daily Averages

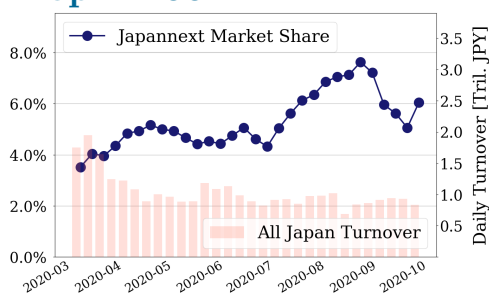
Universe	Turnover(JPY)	Volume	Share	PI (bps)	Symbols
All Market	157,309,737,398	1,190,511,633	6.89 %	9.65	2714
Topix100	50,571,876,432	17,139,020	6.05 %	0.71	93
Nikkei 225	57,846,695,230	32,507,440	6.30 %	2.01	201
TopixMid400	41,691,903,344	27,609,500	7.40 %	3.75	332
Small & Others	22,599,312,338	20,250,180	6.52 %	3.85	1304
Mothers & Jasdaq	19,342,903,850	1,105,392,900	7.99 %	134.69	640
ETFs & REITs	21,078,474,314	11,517,613	8.16 %	3.46	100

All Market
6.9 %

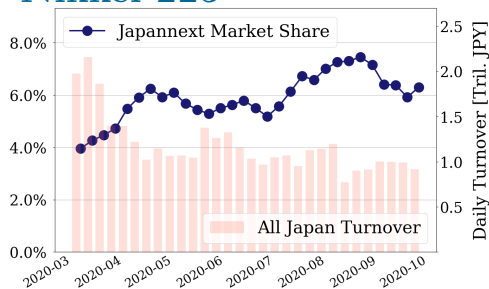
Topix 100
6.0 %

Nikkei 225
6.3 %

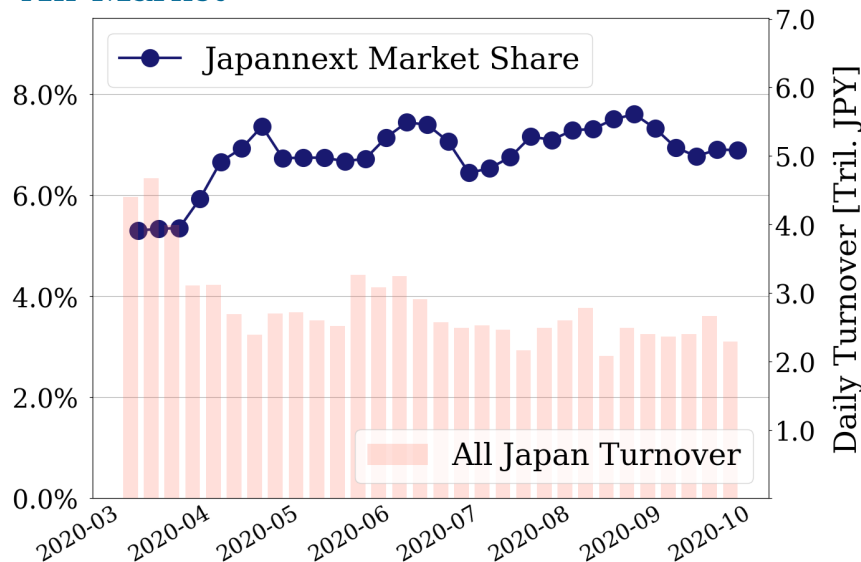
Topix 100



Nikkei 225



All Market



Top Stocks by Turnover

Stock	Turnover(JPY)	Share	PI (bps)
1570 NFNKLV	52,636,842,721	8.76%	1.60
9437 DOCOMO	28,753,358,490	10.01%	1.18
9984 SOFTBANK	27,679,810,600	7.24%	0.37
1357 NFNKDOUB	24,166,439,193	12.82%	5.72
7974 NINTEND	21,804,542,600	8.69%	0.49

Top Stocks by Market Share

Stock	Turnover(JPY)	Share	PI (bps)
7612 NUTS	6,950,221,760	99.53%	3879.68
8918 LAND	101,746,510	87.59%	473.43
2315 CAICA	175,975,110	46.43%	219.89
8894 REVOLUTI	132,253,310	27.34%	111.00
4012 AXIS	434,048,300	26.62%	0.00

Top Stocks by Price Improvement

Stock	Turnover(JPY)	Share	PI (bps)
7612 NUTS	6,950,221,760	99.53%	3879.68
8918 LAND	101,746,510	87.59%	473.43
2315 CAICA	175,975,110	46.43%	219.89
6628 ONKYOHE	298,749,430	26.16%	164.71
1491 CHUGAIM	126,388,840	21.69%	113.44

Top Stocks by Savings

Stock	Turnover(JPY)	Share	Savings
7612 NUTS	6,950,221,760	99.53%	463,024,770
1357 NFNKDOUB	24,166,439,193	12.82%	9,849,652
1570 NFNKLV	52,636,842,721	8.76%	5,651,003
4564 OTS	4,193,317,620	15.30%	4,407,960
6628 ONKYOHE	298,749,430	26.16%	4,340,480

- ▶ Analysis is based on Japannext and Thomson Reuters data. Small & Others = First Section - TPX500.
- ▶ All Japan Turnover = Japannext (J+X+U+N) + TSE (excl. Tostnet) + Chi-X (excl. Chi-Match, Chi-Select).
Market Share = Japannext turnover / All Japan Turnover.
- ▶ Opening and Closing auction trades on the TSE are excluded from calculations.
- ▶ Price Improvement (PI) and Savings (PI*volume) are calculated by comparing the execution price against the primary market's best bid for each sell or best offer for each buy at the point of execution from the taker's perspective. Reported PI is a value-weighted average. Names with weekly traded value less than 100,000,000 JPY are excluded from the rankings tables.

Top 10 Stocks by Turnover

Topix 100

Stock	Turnover(JPY)	Share	PI (bps)
9437 DOCOMO	28,753,358,490	10.01%	1.18
9984 SOFTBNKG	27,679,810,600	7.24%	0.37
7974 NINTEND	21,804,542,600	8.69%	0.49
9434 SOFTBANK	13,219,250,830	6.96%	1.14
6861 KEYENCE	11,796,540,090	9.74%	0.37
9983 FASTRET	8,872,232,920	8.51%	0.62
6758 SONY	7,619,230,760	4.97%	0.51
8035 TKOELCN	7,389,885,210	7.90%	0.23
9432 NTT	7,044,446,230	4.94%	0.80
8316 SMFG	6,513,195,180	6.85%	0.72

Nikkei 225

Stock	Turnover(JPY)	Share	PI (bps)
9437 DOCOMO	28,753,358,490	10.01%	1.18
9984 SOFTBNKG	27,679,810,600	7.24%	0.37
9434 SOFTBANK	13,219,250,830	6.96%	1.14
9983 FASTRET	8,872,232,920	8.51%	0.62
2413 M3	8,025,982,200	10.87%	4.03
6758 SONY	7,619,230,760	4.97%	0.51
8035 TKOELCN	7,389,885,210	7.90%	0.23
9432 NTT	7,044,446,230	4.94%	0.80
4755 RAKUTEN	6,546,704,620	10.92%	2.42
8316 SMFG	6,513,195,180	6.85%	0.72

Topix Mid400

Stock	Turnover(JPY)	Share	PI (bps)
2413 M3	8,025,982,200	10.87%	4.03
4755 RAKUTEN	6,546,704,620	10.92%	2.42
3038 KOBE BSN	6,198,337,600	12.63%	4.61
4689 ZHD	6,059,600,970	7.57%	3.93
6920 LASRTEC	5,581,579,800	9.62%	2.94
6701 NEC	4,087,449,900	8.58%	3.81
6857 ADVNTST	3,832,915,800	12.20%	5.45
6723 RENESAS	3,074,720,450	10.52%	3.50
9613 NTTDATA	2,386,360,500	7.20%	1.85
6963 ROHM	2,356,003,400	7.34%	3.07

Small & Others

Stock	Turnover(JPY)	Share	PI (bps)
3962 CHANGE	15,085,990,300	6.58%	2.71
3915 TERRASKY	2,097,956,750	13.07%	4.60
3788 GMOGSHD	2,029,353,000	8.69%	2.80
8848 LEOPC21	1,819,156,090	12.75%	11.04
4776 CYBOZU	1,695,912,000	12.87%	3.53
4845 SCALA	1,629,420,530	9.51%	2.75
3697 SHIFT	1,310,466,600	8.03%	1.69
3681 V-CUBE	1,243,722,800	7.14%	1.87
6560 LTS	1,242,010,550	12.81%	4.33
7545 NISIMAT	1,210,223,030	9.65%	1.80

Mothers

Stock	Turnover(JPY)	Share	PI (bps)
4477 BASE	4,726,850,000	8.24%	2.43
4564 OTS	4,193,317,620	15.30%	14.09
2160 GNI	3,382,561,000	11.92%	3.71
3998 SURALANT	2,682,994,100	11.55%	3.83
4385 MERCARI	2,460,862,500	8.09%	2.77
6195 HOPE	2,197,700,100	15.58%	4.42
4479 MAKUAKE	2,136,922,600	12.11%	2.41
4475 HENNGE	2,036,535,100	12.61%	3.96
3911 AIMING	1,680,929,600	9.49%	3.47
3558 LOCONDO	1,525,252,400	16.40%	3.53

JASDAQ

Stock	Turnover(JPY)	Share	PI (bps)
7612 NUTS	6,950,221,760	99.53%	3879.68
3776 BB-TOWER	2,865,841,530	9.94%	5.16
7564 WORKMAN	1,783,430,900	8.98%	2.54
2484 DEMAECAN	1,503,542,300	9.23%	2.44
2702 MCDNALD	1,222,645,900	15.04%	4.75
2191 TELLA	966,147,470	10.81%	3.03
4059 MAGMAG	962,393,600	2.08%	14.14
6324 HARMONC	649,529,200	8.67%	4.98
3540 CIMEDICL	636,053,000	12.62%	3.66
7610 TAY TWO	544,796,680	16.63%	21.69

Second Section

Stock	Turnover(JPY)	Share	PI (bps)
6502 TOSHIBA	1,839,832,570	4.74%	1.34
2929 PHARMA F	1,078,266,100	7.74%	1.53
3663 ARTSPARK	413,544,220	10.20%	1.67
9360 SUZUYO	381,132,990	2.94%	8.99
3377 BIKE O	315,818,620	16.15%	6.03
1757 CREA HD	269,640,300	14.08%	44.34
4481 BASE	264,339,300	8.43%	9.69
8226 RIKEI	239,370,150	2.54%	10.52
5781 TOHOKIN	216,801,370	3.64%	12.22
2375 GIGWORKS	197,589,230	5.74%	2.04

ETFs & REITs

Stock	Turnover(JPY)	Share	PI (bps)
1570 NFNKLV	52,636,842,721	8.76%	1.60
1357 NFNKDOUB	24,166,439,193	12.82%	5.72
1360 NKBEAR-2	3,386,185,961	13.19%	1.43
1458 RK 225LV	2,690,162,777	15.28%	3.30
1459 RK 225DI	2,653,449,975	13.02%	1.29
1579 225 BULL	2,452,614,800	4.85%	1.27
1552 VIXSHORT	1,300,378,224	9.36%	1.93
1699 NFOIL	1,110,094,965	22.51%	50.53
8985 JHR	905,570,620	10.25%	4.52
1671 WTI ETF	848,422,470	9.45%	3.77

Top 10 Stocks by Market Share

Topix 100

Stock	Share	Turnover(JPY)	PI (bps)
9020 JR EAST	10.29%	3,617,700,480	0.52
9437 DOCOMO	10.01%	28,753,358,490	1.18
9022 JR CENT	9.82%	3,193,867,850	0.47
6861 KEYENCE	9.74%	11,796,540,090	0.37
7974 NINTEND	8.69%	21,804,542,600	0.49
8591 ORIX	8.55%	2,437,957,790	1.04
9983 FASTRET	8.51%	8,872,232,920	0.62
6702 FUJITSU	8.18%	4,034,198,460	0.58
9021 JR WEST	8.04%	1,663,222,250	0.76
8035 TKOELCN	7.90%	7,389,885,210	0.23

Nikkei 225

Stock	Share	Turnover(JPY)	PI (bps)
2768 SOJITZ	17.58%	1,039,610,180	14.57
4902 KONICAM	16.51%	1,379,541,040	11.07
9501 TEPCOHD	15.33%	1,540,579,260	10.78
7211 MMC	14.40%	1,239,356,490	14.66
1803 SHIMIZU	13.67%	826,414,060	3.44
7762 CITIZEN	13.51%	366,144,920	10.40
1332 NISSUI	12.98%	484,059,010	6.05
6472 NTN	12.83%	591,649,610	16.74
3861 OJI HD	12.77%	546,635,940	5.82
7004 HIT-ZOS	12.56%	126,203,170	6.98

Topix Mid400

Stock	Share	Turnover(JPY)	PI (bps)
3938 LINE	21.22%	1,880,557,000	6.90
8410 SEVEN BK	17.88%	857,117,160	12.63
2768 SOJITZ	17.58%	1,039,610,180	14.57
4902 KONICAM	16.51%	1,379,541,040	11.07
9831 YAMADAHD	15.54%	1,312,556,010	5.89
2897 NISINFHD	15.47%	1,626,518,800	3.83
9501 TEPCOHD	15.33%	1,540,579,260	10.78
7167 MEBUKIFG	14.74%	586,492,330	13.44
7211 MMC	14.40%	1,239,356,490	14.66
9627 AIN HD	13.73%	396,850,700	6.70

Small & Others

Stock	Share	Turnover(JPY)	PI (bps)
8918 LAND	87.59%	101,746,510	473.43
6740 JDI	18.95%	160,272,500	63.67
8585 OR.CORP	18.10%	210,569,080	28.99
6632 JVCKW	17.74%	125,993,580	19.60
3194 KIRINDOH	15.87%	343,494,750	4.44
8897 TAKARAL	15.09%	140,548,640	10.73
6192 HYAS&CO.	14.87%	180,055,630	14.49
4779 SOFTBRN	13.94%	120,213,920	3.06
7630 ICHIBAN	13.79%	114,084,800	4.47
4829 NH-ENT	13.62%	175,199,700	8.03

Mothers

Stock	Share	Turnover(JPY)	PI (bps)
4012 AXIS	26.62%	434,048,300	0.00
2370 MEDINET	22.27%	252,052,450	30.22
3558 LOCONDO	16.40%	1,525,252,400	3.53
6195 HOPE	15.58%	2,197,700,100	4.42
4393 BOI	15.40%	809,237,350	3.76
4564 OTS	15.30%	4,193,317,620	14.09
4486 UNITE&GR	14.13%	468,801,260	7.23
4597 SOLASIA	13.20%	137,886,280	11.61
4475 HENNGE	12.61%	2,036,535,100	3.96
2150 CARENET	12.53%	863,694,550	3.93

JASDAQ

Stock	Share	Turnover(JPY)	PI (bps)
7612 NUTS	99.53%	6,950,221,760	3879.68
2315 CAICA	46.43%	175,975,110	219.89
6628 ONKYOHE	26.16%	298,749,430	164.71
7610 TAY TWO	16.63%	544,796,680	21.69
3562 NO.1	16.16%	477,372,900	4.00
4347 BR-MEDIA	15.08%	160,025,570	19.74
2702 MCDNALD	15.04%	1,222,645,900	4.75
3323 RECOMM	14.52%	117,214,870	14.79
3760 CAVE	13.25%	380,959,960	2.20
3540 CIMEDICL	12.62%	636,053,000	3.66

Second Section

Stock	Share	Turnover(JPY)	PI (bps)
8894 REVOLUTI	27.34%	132,253,310	111.00
1491 CHUGAIM	21.69%	126,388,840	113.44
6835 ALLIEDHD	17.61%	174,753,560	23.74
3377 BIKE O	16.15%	315,818,620	6.03
6366 CHIYODA	16.08%	151,500,260	9.79
1757 CREA HD	14.08%	269,640,300	44.34
3825 REMIX	10.53%	176,324,350	23.24
3663 ARTSPARK	10.20%	413,544,220	1.67
7412 ATOM	8.60%	182,994,670	2.14
4481 BASE	8.43%	264,339,300	9.69

ETFs & REITs

Stock	Share	Turnover(JPY)	PI (bps)
1699 NFOIL	22.51%	1,110,094,965	50.53
1615 NFBANKS	16.71%	503,634,450	30.73
1458 RK 225LV	15.28%	2,690,162,777	3.30
1365 DW 225LV	13.90%	500,699,866	2.53
1360 NKBEAR-2	13.19%	3,386,185,961	1.43
1459 RK 225DI	13.02%	2,653,449,975	1.29
1357 NFNKDOUB	12.82%	24,166,439,193	5.72
1356 TPXBEAR2	10.38%	230,467,690	2.64
8985 JHR	10.25%	905,570,620	4.52
1671 WTI ETF	9.45%	848,422,470	3.77

Top 10 Stocks by PI

Topix 100

Stock	PI (bps)	Turnover(JPY)	Share
7201 NISSAN	3.04	2,083,000,120	7.48%
8308 RESONA	2.73	369,616,380	2.77%
5020 ENEOS	2.69	681,400,490	2.95%
3402 TORAY	2.51	396,299,470	3.10%
8601 DAIWASG	2.41	230,849,770	3.32%
8306 MUFG	2.35	3,920,539,390	3.74%
1605 INPEX	2.14	615,445,810	4.33%
8604 NOMRAHD	2.14	279,984,840	1.49%
4188 MTBCM HD	1.96	321,659,930	2.44%
8002 MARBENI	1.85	468,058,310	3.46%

Nikkei 225

Stock	PI (bps)	Turnover(JPY)	Share
6472 NTN	16.74	591,649,610	12.83%
7211 MMC	14.66	1,239,356,490	14.40%
2768 SOJITZ	14.57	1,039,610,180	17.58%
4902 KONICAM	11.07	1,379,541,040	16.51%
9501 TEPCOHD	10.78	1,540,579,260	15.33%
7762 CITIZEN	10.40	366,144,920	13.51%
5803 FUJIKRA	9.90	349,943,090	11.90%
4005 SMICHEM	9.14	1,591,571,550	12.00%
7186 CONCRDIA	8.24	663,472,380	10.22%
5406 KOBESTL	7.38	609,985,260	9.99%

Topix Mid400

Stock	PI (bps)	Turnover(JPY)	Share
6472 NTN	16.74	591,649,610	12.83%
7211 MMC	14.66	1,239,356,490	14.40%
2768 SOJITZ	14.57	1,039,610,180	17.58%
7167 MEBUKIFG	13.44	586,492,330	14.74%
8410 SEVEN BK	12.63	857,117,160	17.88%
4902 KONICAM	11.07	1,379,541,040	16.51%
9501 TEPCOHD	10.78	1,540,579,260	15.33%
7762 CITIZEN	10.40	366,144,920	13.51%
5803 FUJIKRA	9.90	349,943,090	11.90%
4005 SMICHEM	9.14	1,591,571,550	12.00%

Small & Others

Stock	PI (bps)	Turnover(JPY)	Share
8918 LAND	473.43	101,746,510	87.59%
6740 JDI	63.67	160,272,500	18.95%
8585 OR.CORP	28.99	210,569,080	18.10%
6632 JVCKW	19.60	125,993,580	17.74%
6192 HYAS&CO.	14.49	180,055,630	14.87%
5563 NP-DENK	11.37	110,704,460	12.03%
8848 LEOPC21	11.04	1,819,156,090	12.75%
8897 TAKARAL	10.73	140,548,640	15.09%
8515 AIFUL	10.28	782,461,340	10.17%
8424 FUYO-GL	10.23	173,600,600	13.41%

Mothers

Stock	PI (bps)	Turnover(JPY)	Share
2370 MEDINET	30.22	252,052,450	22.27%
4058 TOYOKUMO	18.13	669,321,500	1.59%
4060 RAKUMO	17.18	514,065,650	1.42%
4564 OTS	14.09	4,193,317,620	15.30%
4933 INE	12.35	349,316,400	1.00%
4597 SOLASIA	11.61	137,886,280	13.20%
4445 LIVING T	9.47	171,853,000	11.67%
7067 BRANDING	8.82	224,625,560	6.42%
4051 GMO-FG	7.58	293,108,500	8.44%
4486 UNITE&GR	7.23	468,801,260	14.13%

JASDAQ

Stock	PI (bps)	Turnover(JPY)	Share
7612 NUTS	3879.68	6,950,221,760	99.53%
2315 CAICA	219.89	175,975,110	46.43%
6628 ONKYOHE	164.71	298,749,430	26.16%
7610 TAY TWO	21.69	544,796,680	16.63%
4347 BR-MEDIA	19.74	160,025,570	15.08%
3323 RECOMM	14.79	117,214,870	14.52%
4059 MAGMAG	14.14	962,393,600	2.08%
4930 GRAPHICO	13.31	230,041,700	2.33%
4736 JPN-RAD	10.14	212,915,970	3.08%
9263 VISIONAR	7.83	102,341,860	8.57%

Second Section

Stock	PI (bps)	Turnover(JPY)	Share
1491 CHUGAIM	113.44	126,388,840	21.69%
8894 REVOLUTI	111.00	132,253,310	27.34%
1757 CREA HD	44.34	269,640,300	14.08%
6835 ALLIEDHD	23.74	174,753,560	17.61%
3825 REMIX	23.24	176,324,350	10.53%
7851 KAWASEC	12.27	148,355,080	5.28%
5781 TOHOKIN	12.22	216,801,370	3.64%
8226 RIKEI	10.52	239,370,150	2.54%
6366 CHIYODA	9.79	151,500,260	16.08%
4481 BASE	9.69	264,339,300	8.43%

ETFs & REITs

Stock	PI (bps)	Turnover(JPY)	Share
1699 NFOIL	50.53	1,110,094,965	22.51%
1615 NFBANKS	30.73	503,634,450	16.71%
1357 NFNKDOUB	5.72	24,166,439,193	12.82%
8985 JHR	4.52	905,570,620	10.25%
3269 ADR	4.18	478,349,400	7.58%
8963 INV	3.98	415,761,693	7.61%
1671 WTI ETF	3.77	848,422,470	9.45%
8976 DAIWAOF	3.76	147,525,500	4.50%
3287 HOSINORR	3.59	260,887,500	8.76%
3309 SEKSUIHR	3.59	319,843,900	7.23%