

## Market Report for the Week of June 15, 2020

### Daily Averages

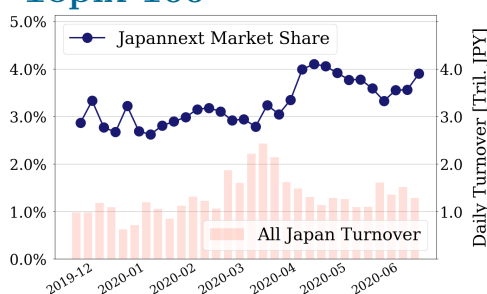
Universe	Value (JPY)	Volume	Share	PI (bps)	Symbols
All Market	214,855,598,074	187,615,235	6.14 %	3.95	3028
Large Cap	49,899,872,160	18,722,640	3.90 %	1.22	100
Mid Cap	58,349,130,998	40,073,440	6.29 %	3.68	397
Small Cap	23,115,672,290	26,597,880	5.98 %	4.31	1517
Mothers & Jasdq	23,017,327,954	49,267,060	7.29 %	10.28	637
ETFs & REITs	57,374,465,504	32,582,014	10.55 %	3.29	117

All Market  
**6.1 %**

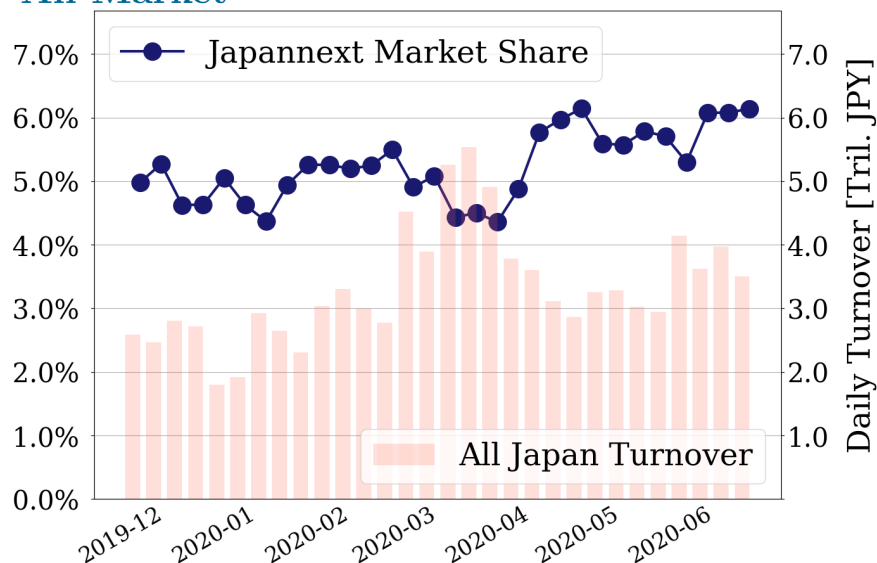
Topix 100  
**3.9 %**

Nikkei 225  
**4.5 %**

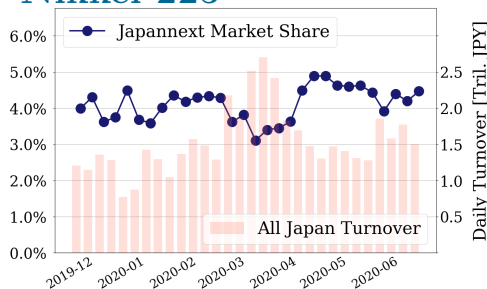
#### Topix 100



#### All Market



#### Nikkei 225



### Top Stocks by Turnover

Stock	Value (JPY)	Share	PI (bps)
1570 NFNKLV	151,395,533,575	11.51%	1.79
1357 NFNKDOUB	76,669,518,769	15.64%	4.77
9984 SOFTBNKG	25,342,089,200	3.21%	1.60
6920 LASRTEC	20,267,458,700	10.73%	2.23
7974 NINTEND	20,246,932,500	5.84%	1.30

### Top Stocks by Market Share

Stock	Value (JPY)	Share	PI (bps)
6573 AGILE	150,751,370	65.48%	2.10
6628 ONKYO	186,973,410	42.84%	424.66
8783 GFA	133,879,340	39.58%	8.78
8918 LAND	178,500,840	28.07%	398.09
9973 KOZOSUSI	164,952,610	27.53%	110.76

### Top Stocks by Price Improvement

Stock	Value (JPY)	Share	PI (bps)
6628 ONKYO	186,973,410	42.84%	424.66
8918 LAND	178,500,840	28.07%	398.09
8894 REVOLUTI	101,018,760	27.53%	127.71
7647 ONTSU	141,106,350	1.81%	114.34
9973 KOZOSUSI	164,952,610	27.53%	110.76

### Top Stocks by Savings

Stock	Value (JPY)	Share	Savings
1357 NFNKDOUB	76,669,518,769	15.64%	29,215,676
1570 NFNKLV	151,395,533,575	11.51%	22,520,949
2315 CAICA	1,854,518,120	22.55%	14,091,720
1699 NFOIL	4,437,557,600	23.76%	13,441,941
6628 ONKYO	186,973,410	42.84%	6,807,360

- ▶ Analysis is based on Japannext and Thomson Reuters data. Large Cap = TPX100, Mid Cap = TPX500 excl. TPX100, Small Cap = Section1 + Section2 excl. TPX500.
- ▶ All Japan Turnover = Japannext (J+X+U+N) + TSE (excl. Tostnet) + Chi-X (excl. Chi-Match, Chi-Select). Market Share = Japannext turnover / All Japan Turnover.
- ▶ Price Improvement (PI) and Savings (PI\*volume) are calculated by comparing the execution price against the primary market's best bid for each sell or best offer for each buy at the point of execution from the taker's perspective. Reported PI is a value-weighted average. Names with weekly traded value less than 100,000,000 JPY are excluded from the rankings tables.

## Top Stocks by Universe

### Topix 100

Stock	Value (JPY)	Share	PI (bps)
9984 SOFTBNKG	25,342,089,200	3.21%	1.60
7974 NINTEND	20,246,932,500	5.84%	1.30
9983 FASTRET	19,439,718,440	5.8%	1.67
6861 KEYENCE	6,153,637,000	5.13%	1.38
6098 RECRUIT	5,106,717,900	4.41%	1.58
8316 SMFG	4,964,042,090	4.28%	1.78
8306 MUFG	3,775,557,090	2.73%	2.32
9433 KDDI	3,201,379,940	3.99%	1.72
4507 SIONOGI	3,065,888,980	4.59%	1.71
6981 MURATA	2,425,803,700	3.19%	1.74

### Topix Mid400

Stock	Value (JPY)	Share	PI (bps)
9501 TEPCOHD	2,999,406,600	12.88%	8.33
4005 SMICHEM	2,974,084,080	9.89%	9.27
7211 MMC	2,114,123,330	11.94%	10.43
4902 KONICAM	2,074,124,720	10.85%	6.87
2768 SOJITZ	2,015,624,320	11.55%	13.54
3938 LINE	1,981,097,600	19.57%	7.57
6472 NTN	1,472,739,200	11.75%	13.85
5406 KOBESTL	1,359,930,840	8.79%	7.28
9719 SCSK	1,237,945,700	12.4%	6.62
1332 NISSUI	899,434,610	11.31%	5.95

### Small

Stock	Value (JPY)	Share	PI (bps)
8515 AIFUL	1,800,333,320	15.21%	13.50
9424 JPN-COMM	496,894,960	14.15%	13.65
2337 ICHIGO	468,241,270	13.67%	10.37
8585 OR.CORP	382,539,280	13.57%	29.23
6632 JVCKW	263,704,530	13.76%	19.34
8698 MONEX G	253,190,540	11.79%	9.78
7238 AKEBONO	230,986,280	11.42%	15.54
6740 JDI	194,288,880	12.89%	74.35
7527 SYSSOFT	187,867,100	8.82%	19.52
8918 LAND	178,500,840	28.07%	398.09

### Mothers

Stock	Value (JPY)	Share	PI (bps)
3911 AIMING	2,487,014,060	11.06%	3.18
4597 SOLASIA	2,344,825,090	11.61%	10.32
4385 MERCARI	2,135,543,190	9.17%	3.93
4480 MEDLEY	1,599,195,500	9.78%	4.83
2370 MEDINET	1,541,597,030	19.72%	18.77
4591 RIBOMIC	1,440,306,410	9.04%	3.89
3989 SHARINGT	923,926,090	9.77%	5.01
4583 CHIOME	911,467,820	9.74%	5.64
1447 ITBOOKHD	861,531,720	6.87%	5.88
4564 OTS	806,630,180	10.37%	11.72

### JASDAQ

Stock	Value (JPY)	Share	PI (bps)
7610 TAY TWO	2,011,397,720	13.21%	33.92
2315 CAICA	1,854,518,120	22.55%	99.37
4712 KEYH	869,933,000	18.81%	12.34
2134 SUNCAPTL	598,788,790	17.42%	27.63
4347 BR-MEDIA	427,457,050	15.36%	21.89
4293 SEPTENHD	330,312,100	13.59%	12.87
6628 ONKYO	186,973,410	42.84%	424.66
9973 KOZOSUSI	164,952,610	27.53%	110.76
8783 GFA	133,879,340	39.58%	8.78
8704 TRADERS	89,509,340	10.76%	23.65

### Second Section

Stock	Value (JPY)	Share	PI (bps)
1757 CREA HD	2,374,288,040	11.29%	34.60
3528 PROSPECT	611,088,690	22.05%	99.23
8925 ARDEPRO	290,767,570	16.52%	54.29
3825 REMIX	142,692,480	11.51%	24.36
8894 REVOLUTI	101,018,760	27.53%	127.71
3113 OAK	84,953,100	36.19%	15.81
6731 PIXELA	73,370,630	20.17%	96.17
6993 DAIKOKYA	70,376,090	12.91%	97.52
7279 HI-LEX	53,612,390	22.03%	22.24
9318 ASIADAVE	52,968,470	53.85%	791.51

### ETFs & REITs

Stock	Value (JPY)	Share	PI (bps)
1357 NFNKDOUB	76,669,518,769	15.64%	4.77
1360 NKBEAR-2	12,735,814,579	17.94%	1.36
1459 RK 225DI	5,890,453,925	16.4%	6.77
1699 NFOIL	4,437,557,600	23.76%	44.14
1671 WTI ETF	3,407,291,850	11.54%	2.37
1458 RK 225LV	3,253,838,754	11.28%	3.09
1365 DW 225LV	1,248,545,129	14.85%	3.01
1356 TPXBEAR2	916,015,631	16.62%	1.98
8963 INV	435,619,428	5.51%	4.42
1580 225 BEAR	288,370,240	22.1%	4.76

- ▶ Best stocks are selected based on a combined score of turnover, market share and price improvement, and are listed here in order to illustrate a sample of stocks that trading on JNX venues can deliver benefits to our clients.
- ▶ The weights used in choosing the best stocks depend on the universe.