

## Market Report for the Week of May 18, 2020

### Daily Averages

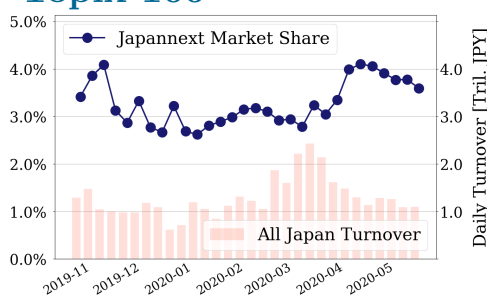
Universe	Value (JPY)	Volume	Share	PI (bps)	Symbols
All Market	167,825,989,856	169,279,344	5.70 %	4.30	3115
Large Cap	39,399,638,126	16,577,920	3.59 %	1.25	100
Mid Cap	54,734,807,804	38,827,240	6.62 %	3.71	398
Small Cap	22,693,283,826	29,484,620	6.63 %	4.70	1532
Mothers & Jasdq	20,046,104,854	45,264,240	6.84 %	9.74	669
ETFs & REITs	29,258,459,508	26,199,352	8.23 %	4.47	118

All Market  
**5.7 %**

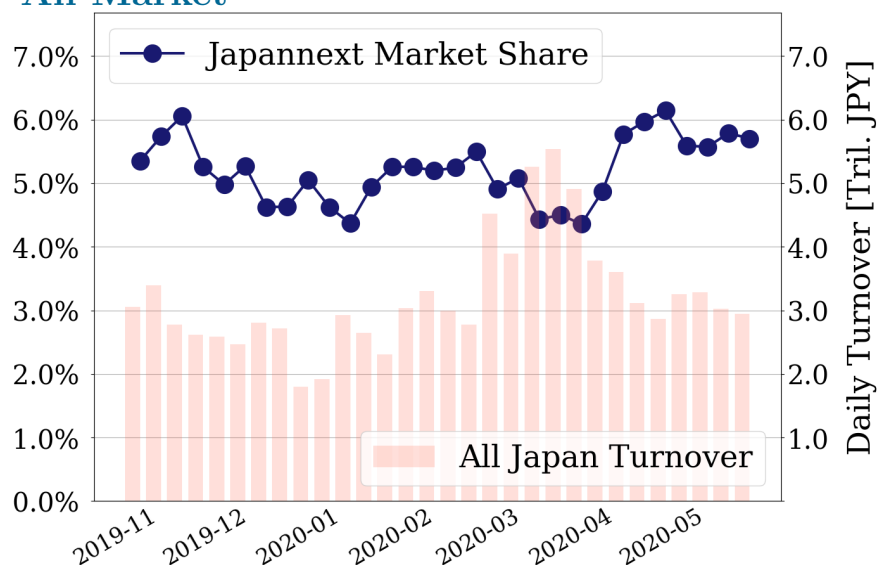
Topix 100  
**3.6 %**

Nikkei 225  
**4.4 %**

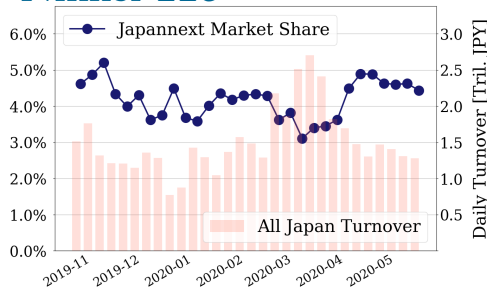
### Topix 100



### All Market



### Nikkei 225



### Top Stocks by Turnover

Stock	Value (JPY)	Share	PI (bps)
1570 NIKKEILV	59,292,546,910	8.09%	1.98
1357 NKDOUBLE	47,534,786,670	16.03%	3.56
9984 SOFTBNKG	21,928,160,500	3.27%	1.31
4563 ANGES	17,839,558,090	6.67%	1.92
9983 FASTRET	13,158,703,080	6.62%	2.11

### Top Stocks by Market Share

Stock	Value (JPY)	Share	PI (bps)
6628 ONKYO	343,395,430	25.82%	285.72
8585 OR.CORP	374,378,190	21.25%	30.88
8925 ARDEPRO	104,504,880	21.10%	86.26
6740 JDI	159,175,940	20.83%	81.40
3528 PROSPECT	199,199,130	20.73%	127.61

### Top Stocks by Price Improvement

Stock	Value (JPY)	Share	PI (bps)
6628 ONKYO	343,395,430	25.82%	285.72
2315 CAICA	153,152,300	17.88%	153.15
3528 PROSPECT	199,199,130	20.73%	127.61
3606 RENOWN	1,043,928,800	15.90%	121.67
9973 KOZOSUSI	627,410,260	20.04%	119.74

### Top Stocks by Savings

Stock	Value (JPY)	Share	Savings
1699 NMR OIL	5,908,097,103	13.85%	21,475,632
1357 NKDOUBLE	47,534,786,670	16.03%	12,991,567
1570 NIKKEILV	59,292,546,910	8.09%	9,357,701
3606 RENOWN	1,043,928,800	15.90%	8,021,720
6628 ONKYO	343,395,430	25.82%	7,220,780

- ▶ Analysis is based on Japannext and Thomson Reuters data. Large Cap = TPX100, Mid Cap = TPX500 excl. TPX100, Small Cap = Section1 + Section2 excl. TPX500.
- ▶ All Japan Turnover = Japannext (J+X+U+N) + TSE (excl. Tostnet) + Chi-X (excl. Chi-Match, Chi-Select). Market Share = Japannext turnover / All Japan Turnover.
- ▶ Price Improvement (PI) and Savings (PI\*volume) are calculated by comparing the execution price against the primary market's best bid for each sell or best offer for each buy at the point of execution from the taker's perspective. Reported PI is a value-weighted average. Names with weekly traded value less than 100,000,000 JPY are excluded from the rankings tables.

## Top Stocks by Universe

### Topix 100

Stock	Value (JPY)	Share	PI (bps)
9983 FASTRET	13,158,703,080	6.62%	2.11
7974 NINTEND	13,036,299,500	6.28%	1.38
6861 KEYENCE	4,951,360,000	4.87%	1.47
7203 TOYOTA	4,567,515,580	2.91%	1.74
4901 FUJIFILM	4,198,030,590	4.66%	1.39
9433 KDDI	2,599,938,600	2.74%	1.75
8306 MUFG	2,512,178,050	1.95%	2.63
6981 MURATA	2,480,635,200	3.08%	1.77
6098 RECRUIT	2,314,124,400	3.54%	1.81
8411 MIZUHO	2,005,749,530	3.18%	8.21

### Topix Mid400

Stock	Value (JPY)	Share	PI (bps)
9501 TEPCOHD	2,475,321,940	17.24%	9.84
4005 SMICHEM	2,431,482,910	12.53%	10.37
4902 KONICAM	1,646,908,490	11.61%	7.95
7211 MMC	1,533,562,100	12.9%	11.04
2768 SOJITZ	1,400,687,890	13.97%	14.74
8410 SEVEN BK	1,356,783,720	14.1%	11.59
3938 LINE	1,309,836,900	15.05%	7.32
8331 CHIBABK	890,074,030	14.5%	6.51
6472 NTN	883,455,390	16.99%	17.39
8358 SURGABK	811,116,300	12.69%	8.26

### Small

Stock	Value (JPY)	Share	PI (bps)
8515 AIFUL	2,881,502,630	14.99%	11.09
3606 RENOWN	1,043,928,800	15.9%	121.67
2337 ICHIGO	475,448,810	17.06%	10.37
8585 OR.CORP	374,378,190	21.25%	30.88
6632 JVCKW	359,655,220	17.11%	19.95
8698 MONEX G	289,158,140	12.84%	13.66
8616 TT-FHD	216,143,610	15.47%	14.42
4714 RISO KY	167,780,590	14.56%	10.93
2353 NP-PARK	162,395,510	18.05%	23.65
6740 JDI	159,175,940	20.83%	81.40

### Mothers

Stock	Value (JPY)	Share	PI (bps)
3911 AIMING	3,941,902,960	12.53%	3.18
6027 BENG04CM	3,138,320,500	11.25%	3.92
2370 MEDINET	2,390,940,390	14.22%	26.62
4583 CHIOME	1,646,980,630	7.92%	5.23
3993 PKSHA	1,560,539,170	10.89%	4.37
4564 OTS	1,138,736,740	7.43%	17.43
3906 ALBERT	959,451,800	8.93%	4.85
2158 FRONTEO	748,027,780	7.13%	5.71
6182 ROZETTA	651,962,500	10.78%	3.99
4424 AMAZIA	539,643,150	10.73%	3.21

### JASDAQ

Stock	Value (JPY)	Share	PI (bps)
7610 TAY TWO	761,346,480	18.95%	49.36
9973 KOZOSUSI	627,410,260	20.04%	119.74
8704 TRADERS	536,519,580	15.41%	25.33
4347 BR-MEDIA	422,854,170	14.41%	21.93
6628 ONKYO	343,395,430	25.82%	285.72
3776 BB-TOWER	266,207,350	13.06%	12.77
2315 CAICA	153,152,300	17.88%	153.15
3323 RECOMM	67,455,770	12.78%	25.86
7612 NUTS	63,224,200	20.04%	119.35
9423 FORVAL R	63,010,540	12.02%	17.08

### Second Section

Stock	Value (JPY)	Share	PI (bps)
6366 CHIYODA	314,815,470	11.28%	10.69
8226 RIKEI	223,488,400	14.36%	12.50
3528 PROSPECT	199,199,130	20.73%	127.61
8925 ARDEPRO	104,504,880	21.1%	86.26
3825 REMIX	98,586,270	11.88%	29.10
6731 PIXELA	78,002,840	21.68%	146.79
3121 MBK	68,209,960	12.71%	9.02
1711 SDS HD	49,127,080	15.0%	19.04
6835 ALLIEDHD	38,638,600	10.02%	32.55
8894 REVOLUTI	38,243,200	23.69%	153.19

### ETFs & REITs

Stock	Value (JPY)	Share	PI (bps)
1357 NKDOUBLE	47,534,786,670	16.03%	3.56
1699 NMR OIL	5,908,097,103	13.85%	49.41
1671 WTI ETF	5,503,753,188	10.4%	2.68
1459 RK 225DI	2,984,591,895	16.5%	5.50
1458 RK 225LV	1,762,801,536	6.83%	3.77
3283 PROLOGIS	770,274,950	5.58%	4.23
1365 DW 225LV	498,459,145	9.55%	2.84
3309 SEKSUIHR	389,670,090	7.79%	3.65
1540 JPP GLD	362,432,150	8.31%	3.08
3227 MIDCITY	224,737,620	6.31%	5.85

- ▶ Best stocks are selected based on a combined score of turnover, market share and price improvement, and are listed here in order to illustrate a sample of stocks that trading on JNX venues can deliver benefits to our clients.
- ▶ The weights used in choosing the best stocks depend on the universe.