

Market Report for the Week of April 20, 2020

Daily Averages

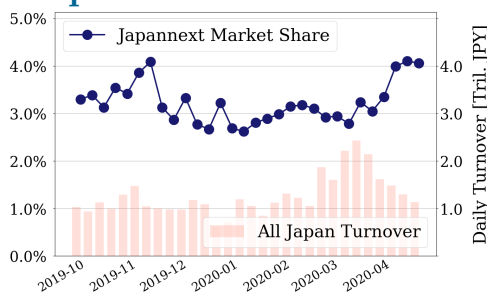
Universe	Value (JPY)	Volume	Share	PI (bps)	Symbols
All Market	175,716,903,019	163,004,108	6.14 %	5.03	3021
Large Cap	45,965,894,850	16,763,220	4.06 %	1.57	100
Mid Cap	54,358,505,302	43,501,020	7.14 %	4.78	398
Small Cap	19,602,134,808	29,775,000	6.73 %	7.65	1503
Mothers & Jasdq	10,993,993,828	23,730,840	5.23 %	18.68	641
ETFs & REITs	43,338,819,631	43,148,211	9.86 %	4.50	109

All Market
6.1 %

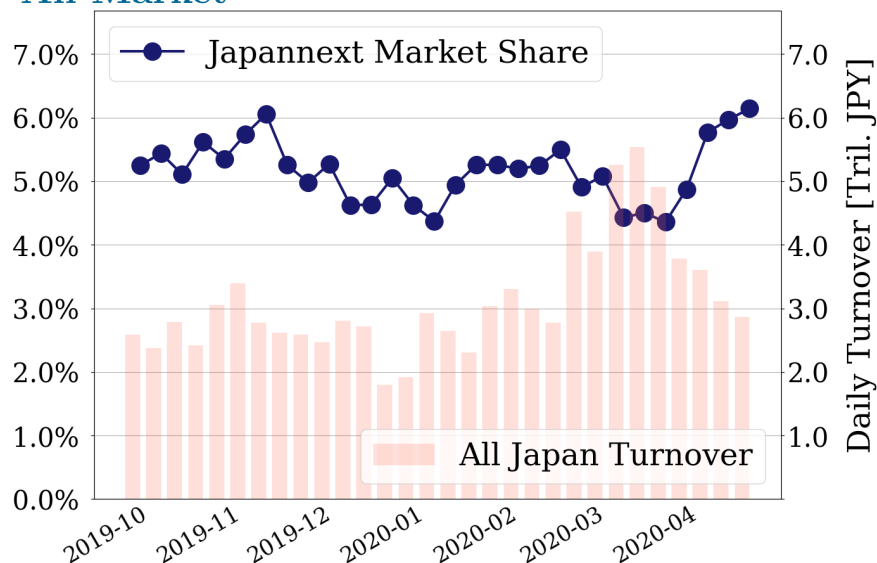
Topix 100
4.1 %

Nikkei 225
4.9 %

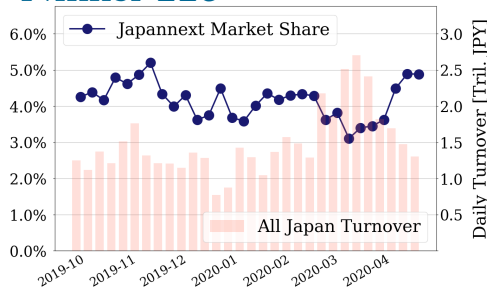
Topix 100



All Market



Nikkei 225



Top Stocks by Turnover

Stock	Value (JPY)	Share	PI (bps)
1570 NIKKEILV	107,818,767,898	12.36%	2.22
1357 NKDOUBLE	56,717,830,005	13.52%	2.70
9984 SOFTBNKG	40,415,624,640	4.80%	1.74
9983 FASTRET	22,576,792,340	7.82%	1.99
7974 NINTEND	19,390,614,000	6.64%	1.63

Top Stocks by Market Share

Stock	Value (JPY)	Share	PI (bps)
9973 KOZOSUSI	121,069,460	44.04%	206.79
8925 ARDEPRO	165,549,330	27.88%	91.26
8918 LAND	169,617,960	27.15%	924.16
6740 JDI	202,605,120	24.38%	89.80
6472 NTN	1,415,947,110	22.87%	20.53

Top Stocks by Price Improvement

Stock	Value (JPY)	Share	PI (bps)
8918 LAND	169,617,960	27.15%	924.16
9973 KOZOSUSI	121,069,460	44.04%	206.79
2315 CAICA	416,283,050	19.12%	133.74
8925 ARDEPRO	165,549,330	27.88%	91.26
6740 JDI	202,605,120	24.38%	89.80

Top Stocks by Savings

Stock	Value (JPY)	Share	Savings
1699 NMR OIL	12,681,387,603	16.67%	32,482,911
1570 NIKKEILV	107,818,767,898	12.36%	18,735,277
1357 NKDOUBLE	56,717,830,005	13.52%	10,736,567
4689 ZHD	6,310,903,020	12.62%	4,306,320
2315 CAICA	416,283,050	19.12%	3,743,670

- ▶ Analysis is based on Japannext and Thomson Reuters data. Large Cap = TPX100, Mid Cap = TPX500 excl. TPX100, Small Cap = Section1 + Section2 excl. TPX500.
- ▶ All Japan Turnover = Japannext (J+X+U+N) + TSE (excl. Tostnet) + Chi-X (excl. Chi-Match, Chi-Select). Market Share = Japannext turnover / All Japan Turnover.
- ▶ Price Improvement (PI) and Savings (PI*volume) are calculated by comparing the execution price against the primary market's best bid for each sell or best offer for each buy at the point of execution from the taker's perspective. Reported PI is a value-weighted average. Names with weekly traded value less than 100,000,000 JPY are excluded from the rankings tables.

Top Stocks by Universe

Topix 100

Stock	Value (JPY)	Share	PI (bps)
9984 SOFTBNKG	40,415,624,640	4.8%	1.74
9983 FASTRET	22,576,792,340	7.82%	1.99
7974 NINTEND	19,390,614,000	6.64%	1.63
4901 FUJIFILM	6,449,532,600	6.26%	2.03
4502 TAKEDAP	5,060,466,180	4.53%	1.80
4519 CHUGAIP	4,606,025,100	5.29%	1.62
6861 KEYENCE	4,037,515,000	4.51%	2.28
4063 SINETUC	3,287,296,780	4.91%	1.57
4661 OLC	3,104,823,800	5.58%	1.49
6981 MURATA	2,668,146,900	3.45%	1.92

Topix Mid400

Stock	Value (JPY)	Share	PI (bps)
3064 MONOTARO	3,046,398,950	15.96%	7.81
4005 SMICHEM	2,383,024,150	13.8%	11.57
2768 SOJITZ	1,983,289,130	16.22%	15.00
9501 TEPCOHD	1,951,580,290	12.92%	9.46
5406 KOBESTL	1,624,088,470	14.77%	10.06
7211 MMC	1,623,571,420	16.48%	11.99
6472 NTN	1,415,947,110	22.87%	20.53
8410 SEVEN BK	936,828,480	13.4%	11.88
7167 MEBUKIFG	924,993,370	17.23%	16.17
7186 CONCRDIA	883,158,970	17.56%	11.71

Small

Stock	Value (JPY)	Share	PI (bps)
2337 ICHIGO	700,078,160	19.92%	13.04
8698 MONEX G	579,053,300	17.06%	17.50
8585 OR.CORP	419,722,780	22.33%	32.72
8616 TT-FHD	350,994,630	20.13%	15.23
6632 JVCKW	303,981,740	22.04%	20.16
5912 OSJBHD	215,947,890	22.77%	16.33
4714 RISO KY	210,804,900	19.52%	13.15
6740 JDI	202,605,120	24.38%	89.80
8918 LAND	169,617,960	27.15%	924.16
5563 NP-DENK	147,258,950	22.84%	27.47

Mothers

Stock	Value (JPY)	Share	PI (bps)
3906 ALBERT	2,059,076,900	7.07%	15.48
4586 MEDRX	746,652,500	7.63%	18.89
6027 BENG04CM	722,410,400	8.44%	12.55
3911 AIMING	633,723,350	15.16%	7.47
4424 AMAZIA	613,785,050	8.11%	10.06
7707 PSS	584,334,450	8.33%	12.40
4596 KUBOTAPH	569,724,700	7.91%	14.96
2158 FRONTEO	435,380,500	13.62%	24.13
4308 JSTREAM	358,348,850	10.01%	9.39
3359 COTTA	275,255,720	7.73%	20.15

JASDAQ

Stock	Value (JPY)	Share	PI (bps)
2315 CAICA	416,283,050	19.12%	133.74
4347 BR-MEDIA	343,797,660	14.96%	37.41
2134 SUNCAPTL	214,650,120	15.35%	40.72
8746 1-COMOD	190,377,680	12.23%	24.60
8704 TRADERS	188,856,580	14.26%	35.48
9973 KOZOSUSI	121,069,460	44.04%	206.79
6628 ONKYO	98,219,950	55.95%	464.91
2321 SOFTFROH	94,701,650	13.39%	28.35
7610 TAY TWO	82,241,080	18.52%	80.69
2666 AUTWAVE	72,624,940	11.3%	28.30

Second Section

Stock	Value (JPY)	Share	PI (bps)
8925 ARDEPRO	165,549,330	27.88%	91.26
6775 TB GROUP	107,272,410	8.27%	31.16
8226 RIKEI	71,814,640	17.09%	24.69
3528 PROSPECT	61,186,880	36.07%	158.20
3825 REMIX	54,191,330	13.44%	33.91
8894 REVOLUTI	44,044,570	28.5%	170.32
6993 DAIKOKYA	42,687,750	20.84%	140.11
1840 TSUCHIHD	38,214,680	9.4%	35.57
2788 APPLEIN	35,856,280	8.78%	30.81
5856 LIEH	35,010,710	13.81%	51.10

ETFs & REITs

Stock	Value (JPY)	Share	PI (bps)
1570 NIKKEILV	107,818,767,898	12.36%	2.22
1357 NKDOUBLE	56,717,830,005	13.52%	2.70
1699 NMR OIL	12,681,387,603	16.67%	43.76
1459 RK 225DI	4,205,375,705	15.87%	4.22
1552 VIXSHORT	2,966,845,371	8.51%	3.14
8985 JHR	733,687,200	6.32%	5.62
1365 DW 225LV	535,318,280	11.62%	2.03
3269 ADR	455,203,250	5.6%	3.74
3287 HOSINORR	372,729,900	5.85%	5.48
3279 API	299,265,650	4.22%	4.26

- ▶ Best stocks are selected based on a combined score of turnover, market share and price improvement, and are listed here in order to illustrate a sample of stocks that trading on JNX venues can deliver benefits to our clients.
- ▶ The weights used in choosing the best stocks depend on the universe.