

Market Report for the Week of March 30, 2020

Daily Averages

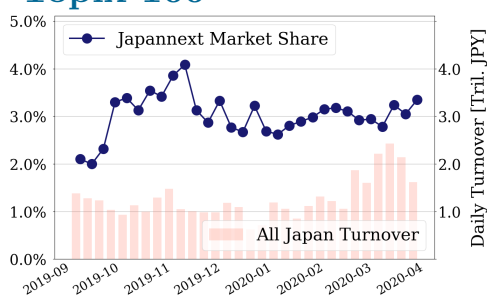
Universe	Value (JPY)	Volume	Share	PI (bps)	Symbols
All Market	184,288,887,212	140,696,511	4.87 %	4.22	3060
Large Cap	54,250,920,154	21,293,720	3.35 %	2.20	100
Mid Cap	48,358,186,046	43,348,920	4.92 %	5.10	399
Small Cap	16,710,026,312	27,393,100	5.04 %	8.81	1563
Mothers & Jasdqa	6,030,983,546	17,719,180	4.94 %	20.08	623
ETFs & REITs	57,272,955,828	25,620,984	8.23 %	2.38	105

All Market
4.9 %

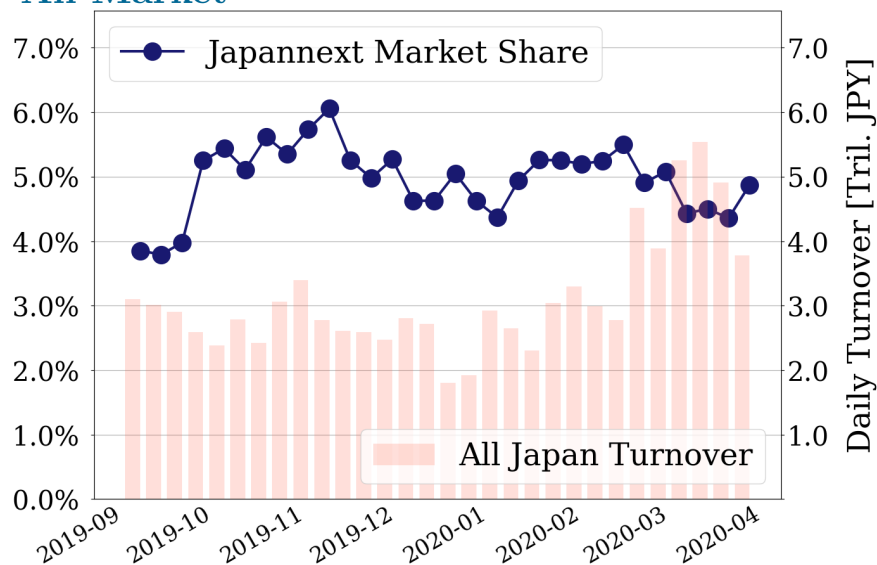
Topix 100
3.4 %

Nikkei 225
3.6 %

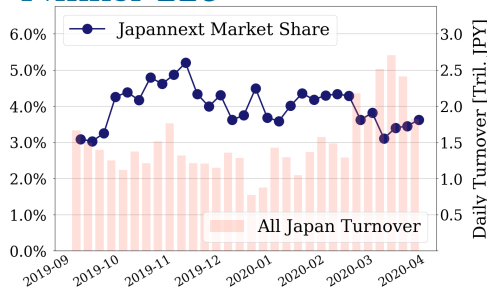
Topix 100



All Market



Nikkei 225



Top Stocks by Turnover

Stock	Value (JPY)	Share	PI (bps)
1570 NIKKEILV	116,958,993,554	8.79%	1.99
1357 NKDOUBLE	108,460,532,525	11.11%	1.74
9983 FASTRET	27,285,714,180	8.32%	2.49
7974 NINTEND	25,962,276,500	7.01%	2.01
9984 SOFTBNKG	20,885,721,400	2.92%	2.37

Top Stocks by Market Share

Stock	Value (JPY)	Share	PI (bps)
9973 KOZOSUSI	214,807,790	35.13%	215.91
3528 PROSPECT	122,188,450	24.14%	170.36
1367 DW TPX2X	502,113,592	22.14%	2.19
6632 JVCKW	660,457,350	21.48%	21.55
6740 JDI	302,200,920	21.00%	78.00

Top Stocks by Price Improvement

Stock	Value (JPY)	Share	PI (bps)
9973 KOZOSUSI	214,807,790	35.13%	215.91
3528 PROSPECT	122,188,450	24.14%	170.36
6740 JDI	302,200,920	21.00%	78.00
2134 SUNCAPTL	290,720,420	19.80%	47.59
4586 MEDRX	150,062,960	7.85%	42.06

Top Stocks by Savings

Stock	Value (JPY)	Share	Savings
1570 NIKKEILV	116,958,993,554	8.79%	16,392,975
1357 NKDOUBLE	108,460,532,525	11.11%	12,006,435
1699 NMR OIL	3,752,686,302	14.35%	3,643,713
4689 ZHD	4,248,036,430	9.56%	2,980,060
1459 RK 225DI	7,189,925,720	18.55%	2,863,030

- ▶ Analysis is based on Japannext and Thomson Reuters data. Large Cap = TPX100, Mid Cap = TPX500 excl. TPX100, Small Cap = Section1 + Section2 excl. TPX500.
- ▶ All Japan Turnover = Japannext (J+X+U+N) + TSE (excl. Tostnet) + Chi-X (excl. Chi-Match, Chi-Select). Market Share = Japannext turnover / All Japan Turnover.
- ▶ Price Improvement (PI) and Savings (PI*volume) are calculated by comparing the execution price against the primary market's best bid for each sell or best offer for each buy at the point of execution from the taker's perspective. Reported PI is a value-weighted average. Names with weekly traded value less than 100,000,000 JPY are excluded from the rankings tables.

Top Stocks by Universe

Topix 100

Stock	Value (JPY)	Share	PI (bps)
9983 FASTRET	27,285,714,180	8.32%	2.49
7974 NINTEND	25,962,276,500	7.01%	2.01
4901 FUJIFILM	17,706,188,960	6.31%	2.18
6861 KEYENCE	6,984,561,500	4.5%	2.71
4661 OLC	5,646,897,500	5.13%	2.58
9437 DOCOMO	4,217,830,880	3.58%	2.51
9020 JR EAST	3,201,081,580	4.88%	2.31
8411 MIZUHO	3,040,232,310	3.15%	8.12
4543 TERUMO	2,592,937,700	3.05%	2.71
3407 ASA-KSI	2,567,155,890	5.02%	2.28

Topix Mid400

Stock	Value (JPY)	Share	PI (bps)
4689 ZHD	4,248,036,430	9.56%	10.25
2768 SOJITZ	2,870,622,120	14.67%	12.77
4005 SMICHEM	2,776,065,090	10.26%	10.02
7211 MMC	1,876,777,400	9.4%	11.13
6472 NTN	1,830,413,780	19.53%	19.02
8410 SEVEN BK	1,109,699,780	12.92%	12.39
8358 SURGABK	1,093,274,870	11.1%	8.12
5703 NLM HD	956,354,190	17.24%	24.52
7167 MEBUKIFG	953,093,290	14.21%	15.98
7186 CONCRDIA	942,426,260	10.99%	10.29

Small

Stock	Value (JPY)	Share	PI (bps)
8585 OR.CORP	856,767,850	20.69%	28.96
8698 MONEX G	822,483,830	20.03%	19.63
6632 JVCKW	660,457,350	21.48%	21.55
2337 ICHIGO	469,871,350	15.39%	11.95
8616 TT-FHD	346,254,710	17.75%	14.70
6740 JDI	302,200,920	21.0%	78.00
8714 SENSHUIK	166,230,200	15.07%	20.45
8524 NORTHPBK	165,519,730	13.38%	18.55
5912 OSJBHD	147,364,090	15.71%	14.88
2353 NP-PARK	136,603,680	16.01%	25.19

Mothers

Stock	Value (JPY)	Share	PI (bps)
3911 AIMING	1,134,780,470	13.33%	12.43
4308 JSTREAM	327,100,660	6.77%	12.41
3998 SURALANT	314,469,650	5.46%	16.19
3689 IGNIS	284,773,720	8.58%	11.57
3664 MOBCASTH	202,898,510	15.67%	15.61
3900 CROWDWKS	188,920,440	6.93%	13.88
7707 PSS	175,833,480	10.02%	17.89
3359 COTTA	171,014,060	4.02%	24.23
4588 ONCOLYS	170,550,900	7.05%	9.33
4586 MEDRX	150,062,960	7.85%	42.06

JASDAQ

Stock	Value (JPY)	Share	PI (bps)
2134 SUNCAPTL	290,720,420	19.8%	47.59
3390 INEST	247,743,750	12.18%	37.97
9973 KOZOSUSI	214,807,790	35.13%	215.91
4347 BR-MEDIA	193,302,020	12.17%	32.70
8704 TRADERS	167,248,170	17.5%	40.21
4316 BEMAP	83,008,440	59.35%	19.10
6628 ONKYO	82,837,870	45.15%	458.27
8746 1-COMOD	78,738,290	10.99%	32.18
7612 NUTS	68,821,500	23.67%	157.95
2315 CAICA	57,414,210	16.92%	205.07

Second Section

Stock	Value (JPY)	Share	PI (bps)
3528 PROSPECT	122,188,450	24.14%	170.36
8925 ARDEPRO	94,687,900	32.92%	129.71
7681 LEOCLAN	80,981,280	27.08%	7.51
8894 REVOLUTI	67,466,330	21.33%	154.86
3799 KEYWARE	48,371,500	8.3%	24.61
3825 REMIX	34,864,540	12.78%	42.12
6835 ALLIEDHD	29,811,230	15.56%	41.41
6721 WINTEST	22,318,910	8.46%	27.14
5940 FUJSASH	20,112,150	14.7%	35.45
9980 MRK HLD	17,876,260	10.69%	19.37

ETFs & REITs

Stock	Value (JPY)	Share	PI (bps)
1360 NKBEAR-2	9,149,264,231	9.57%	3.18
1459 RK 225DI	7,189,925,720	18.55%	5.85
1699 NMR OIL	3,752,686,302	14.35%	22.77
1568 TPX BULL	3,672,422,910	15.5%	3.34
1366 DW 225DI	1,354,986,105	11.98%	3.87
1365 DW 225LV	675,665,705	11.61%	4.39
3226 ACCOMMO	659,234,300	5.79%	10.48
3279 API	589,060,290	4.49%	8.49
1367 DW TPX2X	502,113,592	22.14%	2.19
3287 HOSINORR	487,416,140	6.96%	5.08

- ▶ Best stocks are selected based on a combined score of turnover, market share and price improvement, and are listed here in order to illustrate a sample of stocks that trading on JNX venues can deliver benefits to our clients.
- ▶ The weights used in choosing the best stocks depend on the universe.