

Market Report for the Week of March 23, 2020

Daily Averages

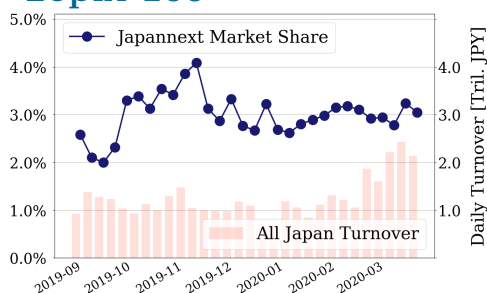
Universe	Value (JPY)	Volume	Share	PI (bps)	Symbols
All Market	213,764,433,812	166,325,315	4.36 %	4.66	3152
Large Cap	65,161,225,852	28,931,460	3.05 %	2.22	100
Mid Cap	64,899,452,808	55,867,720	4.83 %	5.35	399
Small Cap	20,254,934,182	36,557,160	4.62 %	9.65	1595
Mothers & Jasdaq	6,077,658,548	17,887,700	5.22 %	21.67	663
ETFs & REITs	55,998,414,450	20,615,379	6.65 %	2.52	111

All Market
4.4 %

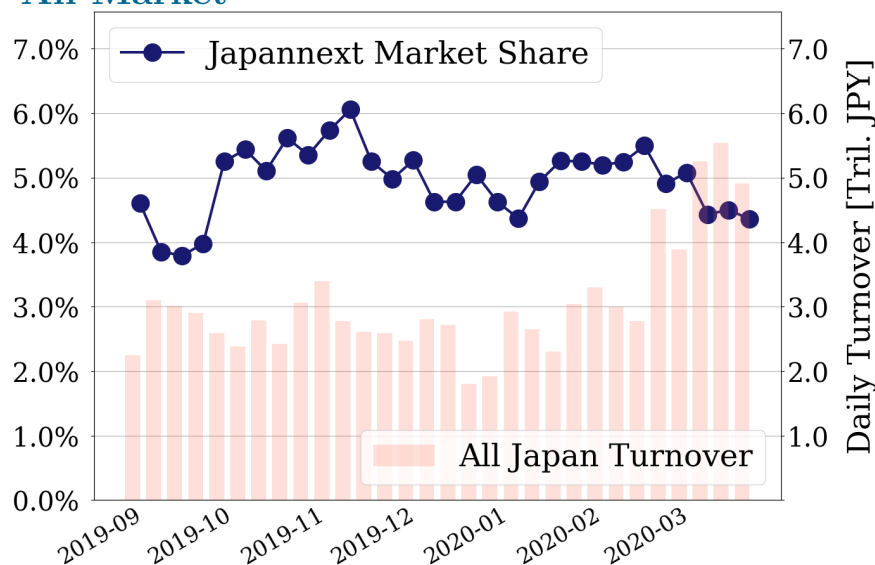
Topix 100
3.0 %

Nikkei 225
3.4 %

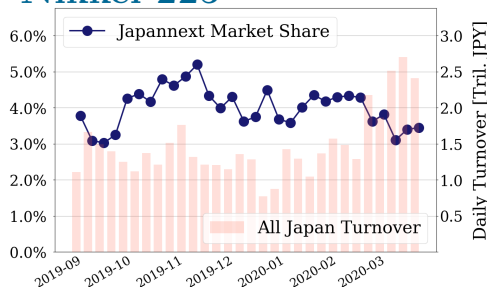
Topix 100



All Market



Nikkei 225



Top Stocks by Turnover

Stock	Value (JPY)	Share	PI (bps)
1570 NIKKEILV	103,053,038,344	6.04%	1.75
1357 NKDOUBLE	97,174,665,187	10.50%	1.91
9984 SOFTBNKG	30,970,960,520	2.93%	2.37
9983 FASTRET	25,252,714,760	5.34%	2.40
7974 NINTEND	13,106,327,000	4.04%	2.21

Top Stocks by Market Share

Stock	Value (JPY)	Share	PI (bps)
1367 DW TPX2X	1,342,311,109	44.76%	2.74
6628 ONKYO	183,311,470	39.37%	421.79
8918 LAND	105,989,750	29.17%	574.51
3258 UNIZO HD	5,418,984,800	27.43%	5.96
3528 PROSPECT	150,092,670	25.80%	146.08

Top Stocks by Price Improvement

Stock	Value (JPY)	Share	PI (bps)
8918 LAND	105,989,750	29.17%	574.51
6628 ONKYO	183,311,470	39.37%	421.79
3528 PROSPECT	150,092,670	25.80%	146.08
8925 ARDEPRO	164,173,350	25.44%	126.39
6740 JDI	769,919,430	20.20%	82.55

Top Stocks by Savings

Stock	Value (JPY)	Share	Savings
1570 NIKKEILV	103,053,038,344	6.04%	11,456,594
1357 NKDOUBLE	97,174,665,187	10.50%	9,781,808
4689 ZHD	7,530,382,500	12.02%	5,623,160
6628 ONKYO	183,311,470	39.37%	5,621,760
8036 HIT-HT	11,421,478,700	19.83%	5,336,000

- ▶ Analysis is based on SBI Japannext and Thomson Reuters data. Large Cap = TPX100, Mid Cap = TPX500 excl. TPX100, Small Cap = Section1 + Section2 excl. TPX500.
- ▶ All Japan Turnover = Japannext (J+X+U+N) + TSE (excl. Tostnet) + Chi-X (excl. Chi-Match, Chi-Select). Market Share = Japannext turnover / All Japan Turnover.
- ▶ Price Improvement (PI) and Savings (PI*volume) are calculated by comparing the execution price against the primary market's best bid for each sell or best offer for each buy at the point of execution from the taker's perspective. Reported PI is a value-weighted average. Names with weekly traded value less than 100,000,000 JPY are excluded from the rankings tables.

Top Stocks by Universe

Topix 100

Stock	Value (JPY)	Share	PI (bps)
9984 SOFTBNKG	30,970,960,520	2.93%	2.37
9983 FASTRET	25,252,714,760	5.34%	2.40
7974 NINTEND	13,106,327,000	4.04%	2.21
8035 TKOELCN	12,309,977,500	4.34%	2.24
4661 OLC	9,595,115,200	5.23%	2.23
6861 KEYENCE	7,810,458,500	3.66%	2.92
9437 DOCOMO	5,328,650,840	2.89%	2.49
4901 FUJIFILM	4,997,916,930	5.04%	2.09
4519 CHUGAIP	4,040,944,780	3.56%	2.76
8411 MIZUHO	4,021,091,280	2.62%	7.77

Topix Mid400

Stock	Value (JPY)	Share	PI (bps)
8036 HIT-HT	11,421,478,700	19.83%	4.90
4689 ZHD	7,530,382,500	12.02%	10.68
9501 TEPCOHD	3,973,886,420	11.15%	8.42
2768 SOJITZ	3,960,359,560	12.12%	12.25
4005 SMICHEM	3,745,449,380	9.75%	10.80
7211 MMC	2,676,103,780	11.68%	9.73
6472 NTN	2,024,860,660	17.38%	18.98
8410 SEVEN BK	1,325,473,020	11.17%	12.78
5703 NLM HD	1,269,690,950	17.87%	26.00
7167 MEBUKIFG	1,195,873,470	12.58%	15.82

Small

Stock	Value (JPY)	Share	PI (bps)
3258 UNIZO HD	5,418,984,800	27.43%	5.96
8698 MONEX G	1,120,574,430	16.23%	18.25
8585 OR.CORP	1,088,216,910	17.3%	30.35
6632 JVCKW	926,701,100	22.32%	21.85
3202 DAITOBO	784,913,960	12.63%	16.99
6740 JDI	769,919,430	20.2%	82.55
8616 TT-FHD	446,834,020	14.95%	15.12
8524 NORTHPBK	221,631,340	12.1%	17.49
2353 NP-PARK	192,235,410	17.17%	23.83
5912 OSJBHD	192,070,930	13.92%	12.51

Mothers

Stock	Value (JPY)	Share	PI (bps)
3911 AIMING	977,048,070	11.65%	9.95
2160 GNI	827,881,270	7.61%	9.73
3689 IGNIS	528,177,380	10.4%	10.08
4308 JSTREAM	263,765,040	8.44%	13.19
4571 NANOCARI	258,938,650	12.66%	11.32
7707 PSS	193,608,920	8.52%	19.43
3906 ALBERT	146,920,550	6.38%	16.76
3664 MOBCASTH	143,728,620	10.79%	17.79
4425 KUDAN	130,291,390	6.83%	26.27
7779 CYBRDYNE	126,232,490	7.65%	9.56

JASDAQ

Stock	Value (JPY)	Share	PI (bps)
4347 BR-MEDIA	356,094,210	15.2%	31.13
6628 ONKYO	183,311,470	39.37%	421.79
2134 SUNCAPTL	119,344,330	13.26%	41.58
2321 SOFTFROH	74,541,860	12.19%	45.98
7612 NUTS	73,982,350	20.28%	137.72
2776 SHINTOHD	65,253,020	11.24%	74.10
9973 KOZOSUSI	63,959,980	25.14%	232.43
5216 KURAMOT	57,068,400	10.94%	44.43
2315 CAICA	49,553,490	16.45%	178.83
8783 GFA	45,935,310	9.74%	90.77

Second Section

Stock	Value (JPY)	Share	PI (bps)
8925 ARDEPRO	164,173,350	25.44%	126.39
3528 PROSPECT	150,092,670	25.8%	146.08
6721 WINTEST	52,701,750	8.57%	41.92
8894 REVOLUTI	52,526,480	29.17%	126.66
3825 REMIX	37,609,030	11.25%	28.53
3840 PATH	37,254,940	9.09%	30.31
8226 RIKEI	33,388,120	8.23%	29.81
5940 FUJSASH	31,444,000	13.62%	33.02
4990 SW.CHEM	31,200,780	19.3%	91.60
7647 ONTSU	25,444,880	5.54%	193.90

ETFs & REITs

Stock	Value (JPY)	Share	PI (bps)
1459 RK 225DI	12,524,143,372	22.68%	4.86
1568 TPX BULL	4,153,389,170	14.13%	3.42
1699 NMR OIL	1,737,213,869	12.12%	21.57
1365 DW 225LV	1,570,108,360	16.09%	4.53
1367 DW TPX2X	1,342,311,109	44.76%	2.74
1366 DW 225DI	1,239,767,280	7.46%	4.84
3279 API	905,326,330	3.62%	10.31
8985 JHR	805,193,801	4.2%	7.78
3287 HOSINORR	688,649,510	6.34%	11.04
3226 ACCOMMO	532,985,650	3.96%	12.89

- ▶ Best stocks are selected based on a combined score of turnover, market share and price improvement, and are listed here in order to illustrate a sample of stocks that trading on JNX venues can deliver benefits to our clients.
- ▶ The weights used in choosing the best stocks depend on the universe.