

Market Report for the Week of January 27, 2020

Daily Averages

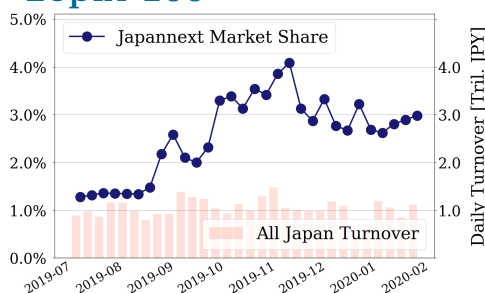
Universe	Value (JPY)	Volume	Share	PI (bps)	Symbols
All Market	159,662,522,857	117,090,662	5.25 %	3.93	3229
Large Cap	33,348,166,346	11,091,000	2.98 %	1.37	100
Mid Cap	63,503,708,336	36,828,840	6.69 %	3.56	399
Small Cap	24,156,639,016	27,970,080	6.13 %	5.90	1573
Mothers & Jasdaq	10,492,054,730	23,205,280	6.02 %	12.85	722
ETFs & REITs	23,748,463,597	7,627,572	7.11 %	2.28	114

All Market
5.3 %

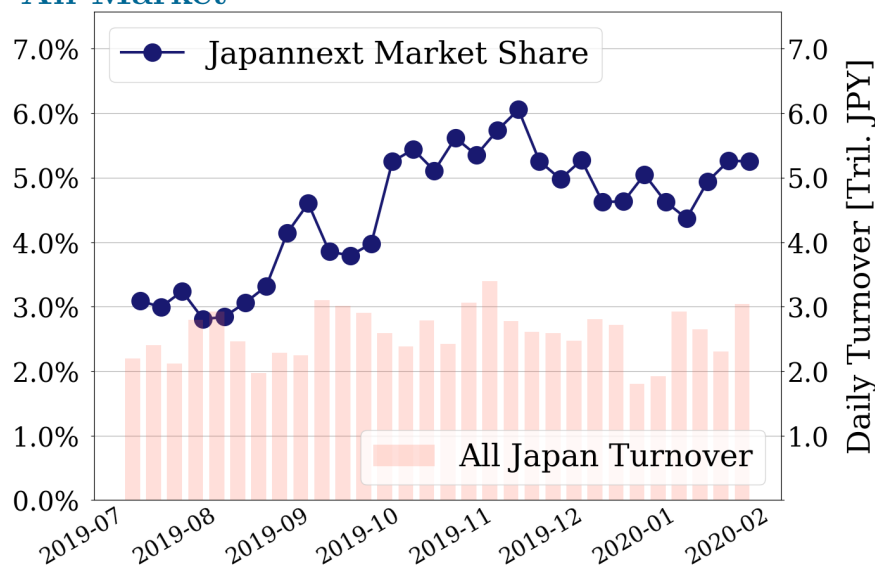
Topix 100
3.0 %

Nikkei 225
4.2 %

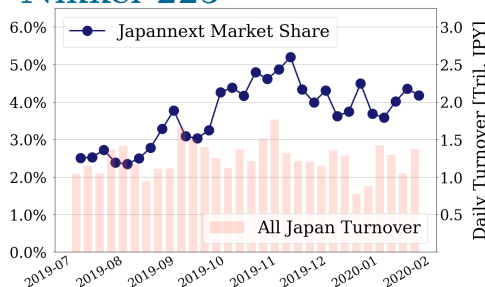
Topix 100



All Market



Nikkei 225



Top Stocks by Turnover

Stock	Value (JPY)	Share	PI (bps)
1570 NIKKEILV	53,963,939,994	6.90%	1.40
1357 NKDOUBLE	27,800,703,516	12.31%	3.34
7974 NINTEND	13,991,174,500	4.90%	1.84
6857 ADVNTST	11,892,924,800	9.01%	4.27
9983 FASTRET	11,704,328,200	5.19%	1.72

Top Stocks by Market Share

Stock	Value (JPY)	Share	PI (bps)
9973 KOZOSUSI	113,133,150	30.02%	165.44
4558 CHUKYOI	1,097,985,610	28.69%	0.00
3528 PROSPECT	362,807,790	24.94%	114.04
2370 MEDINET	139,503,230	24.71%	46.71
6628 ONKYO	263,299,210	23.55%	162.41

Top Stocks by Price Improvement

Stock	Value (JPY)	Share	PI (bps)
9973 KOZOSUSI	113,133,150	30.02%	165.44
6628 ONKYO	263,299,210	23.55%	162.41
3250 ADWORKS	104,075,560	0.95%	126.65
3528 PROSPECT	362,807,790	24.94%	114.04
8894 REVOLUTI	333,871,080	17.79%	71.02

Top Stocks by Savings

Stock	Value (JPY)	Share	Savings
1357 NKDOUBLE	27,800,703,516	12.31%	6,729,162
1570 NIKKEILV	53,963,939,994	6.90%	5,681,071
6628 ONKYO	263,299,210	23.55%	3,410,280
4689 ZHD	5,286,919,100	11.15%	3,163,760
6857 ADVNTST	11,892,924,800	9.01%	3,095,700

- ▶ Analysis is based on SBI Japannext and Thomson Reuters data. Large Cap = TPX100, Mid Cap = TPX500 excl. TPX100, Small Cap = Section1 + Section2 excl. TPX500.
- ▶ All Japan Turnover = Japannext (J+X+U+N) + TSE (excl. Tostnet) + Chi-X (excl. Chi-Match, Chi-Select). Market Share = Japannext turnover / All Japan Turnover.
- ▶ Price Improvement (PI) and Savings (PI*volume) are calculated by comparing the execution price against the primary market's best bid for each sell or best offer for each buy at the point of execution from the taker's perspective. Reported PI is a value-weighted average. Names with weekly traded value less than 100,000,000 JPY are excluded from the rankings tables.

Top Stocks by Universe

Topix 100

Stock	Value (JPY)	Share	PI (bps)
7974 NINTEND	13,991,174,500	4.9%	1.84
9983 FASTRET	11,704,328,200	5.19%	1.72
4661 OLC	5,535,153,200	5.26%	1.69
6861 KEYENCE	3,894,930,000	3.41%	2.01
9201 JAL	2,760,574,300	5.94%	1.89
6273 SMC	2,157,617,000	3.75%	1.96
6752 PANASNIC	2,094,599,220	4.68%	1.52
4519 CHUGAIP	2,066,459,900	4.69%	1.72
8411 MIZUHO	1,805,880,810	2.86%	6.16
8113 UNICHAM	1,747,182,600	5.81%	2.05

Topix Mid400

Stock	Value (JPY)	Share	PI (bps)
4689 ZHD	5,286,919,100	11.15%	8.02
4217 HIT-CHM	3,508,247,650	16.18%	4.76
9684 SQENIXHD	3,011,354,300	14.32%	5.11
4005 SMICHEM	2,366,512,060	11.04%	6.98
8358 SURGABK	1,612,042,700	14.97%	6.37
7211 MMC	1,522,915,810	11.42%	7.63
6472 NTN	1,483,938,500	14.16%	10.55
1332 NISSUI	1,395,319,300	15.92%	4.21
2768 SOJITZ	1,388,536,670	13.43%	9.71
3861 OJI HD	1,042,213,040	11.47%	5.39

Small

Stock	Value (JPY)	Share	PI (bps)
9424 JPN-COMM	1,062,485,300	11.67%	10.27
3202 DAITOBO	1,061,550,880	18.09%	12.86
8698 MONEX G	649,570,570	13.29%	10.16
8585 OR.CORP	537,866,270	13.86%	18.34
6632 JVCKW	494,937,380	12.43%	11.74
2337 ICHIGO	441,758,690	16.66%	6.13
7004 HIT-ZOS	406,034,350	15.25%	6.28
6740 JDI	381,426,650	11.83%	47.47
4829 NH-ENT	363,797,880	11.65%	9.96
4714 RISO KY	310,816,790	14.79%	8.00

Mothers

Stock	Value (JPY)	Share	PI (bps)
4564 OTS	624,037,750	12.46%	22.91
4594 BRITPATH	386,471,210	9.8%	12.75
7803 BUSHIROD	343,965,450	9.54%	14.50
4583 CHIOME	337,829,880	11.02%	18.57
4429 RICKSOFT	326,425,500	9.34%	13.59
3689 IGNIS	301,572,040	9.71%	8.86
7707 PSS	289,006,260	8.15%	16.87
3906 ALBERT	226,655,800	7.29%	11.62
4443 SANSAN	205,674,200	5.31%	16.85
4571 NANOCARI	186,345,500	12.65%	8.42

JASDAQ

Stock	Value (JPY)	Share	PI (bps)
7612 NUTS	1,787,366,360	18.25%	27.06
4347 BR-MEDIA	681,353,610	10.47%	23.88
2134 SUNCAPTL	334,736,020	14.24%	24.42
8946 ASIANSTR	267,593,780	10.92%	21.66
6628 ONKYO	263,299,210	23.55%	162.41
8704 TRADERS	232,969,760	16.63%	25.81
3323 RECOMM	184,274,590	18.24%	19.00
2776 SHINTOHD	157,840,760	15.36%	26.17
9973 KOZOSUSI	113,133,150	30.02%	165.44
9423 FORVAL R	98,901,980	9.76%	18.67

Second Section

Stock	Value (JPY)	Share	PI (bps)
3528 PROSPECT	362,807,790	24.94%	114.04
8894 REVOLUTI	333,871,080	17.79%	71.02
4120 SUGAI	215,238,320	8.3%	53.15
8226 RIKEI	173,219,360	10.55%	13.27
7859 ALMEDIO	140,089,110	11.56%	13.52
8925 ARDEPRO	104,773,700	19.9%	57.20
9969 SHOKUBU	97,695,170	6.32%	34.18
3647 GTHREEHD	77,369,640	8.48%	17.09
3825 REMIX	74,751,920	21.18%	17.01
1443 GIKENHD	71,201,720	8.96%	16.95

ETFs & REITs

Stock	Value (JPY)	Share	PI (bps)
1357 NKDOUBLE	27,800,703,516	12.31%	3.34
1459 RK 225DI	3,023,766,600	20.88%	6.33
8963 INV	2,306,875,350	9.04%	5.13
8985 JHR	1,436,725,310	8.03%	3.43
1552 VIXSHORT	1,008,249,160	8.1%	3.24
3471 MITSUILP	553,956,400	7.29%	6.72
1365 DW 225LV	496,311,477	8.75%	2.30
1356 TPXBEAR2	417,162,355	11.79%	2.38
3287 HOSINORR	381,153,500	8.41%	2.97
3226 ACCOMMO	328,554,400	6.24%	2.67

- ▶ Best stocks are selected based on a combined score of turnover, market share and price improvement, and are listed here in order to illustrate a sample of stocks that trading on JNX venues can deliver benefits to our clients.
- ▶ The weights used in choosing the best stocks depend on the universe.