

Market Report for the Week of May 13, 2019

Daily Averages

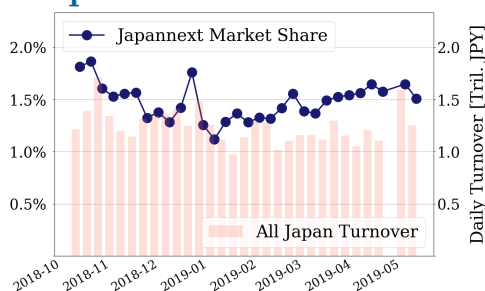
Universe	Value (JPY)	Volume	Share	PI (bps)	Symbols
All Market	97,462,096,779	83,491,377	3.17 %	3.94	2999
Large Cap	18,885,094,920	9,495,900	1.51 %	1.24	101
Mid Cap	50,255,408,262	39,893,840	4.97 %	3.75	399
Small Cap	14,743,523,604	22,255,920	3.63 %	6.98	1742
Mothers & Jasdaq	5,050,255,450	9,835,040	3.19 %	12.30	652
ETFs & REITs	8,527,814,543	2,010,677	3.47 %	1.83	104

All Market
3.2 %
Topix 100

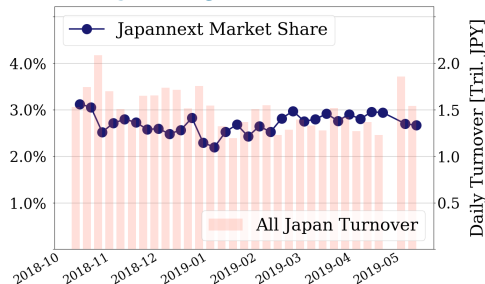
1.5 %
Nikkei 225

2.7 %

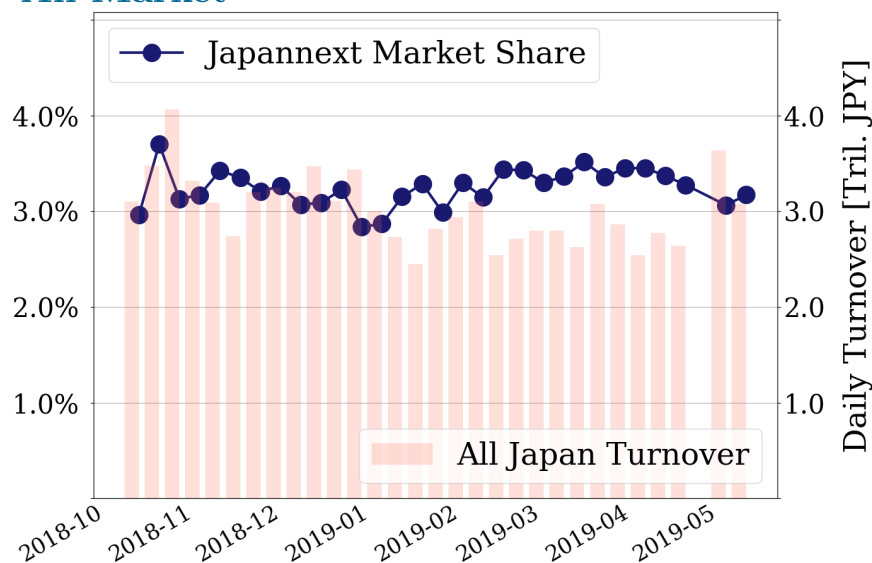
Topix 100



Nikkei 225



All Market



Top Stocks by Turnover

Stock	Value (JPY)	Share	PI (bps)
1570 NIKKEILV	13,292,268,475	2.37%	1.14
1357 NKDOUBLE	9,363,189,745	5.39%	1.78
9984 SOFTBNKG	8,047,851,700	1.73%	1.27
4689 YAHOO J	6,487,057,880	12.03%	9.40
6506 YASKAWA	5,474,353,600	6.05%	3.34

Top Stocks by Market Share

Stock	Value (JPY)	Share	PI (bps)
8703 KABU.COM	1,771,913,710	30.69%	8.25
1724 SYNCLYR	137,172,390	28.34%	1.97
4582 SYMBIO	447,273,280	16.85%	13.89
6472 NTN	1,641,740,450	16.56%	9.68
8585 OR.CORP	402,821,540	15.92%	26.75

Top Stocks by Price Improvement

Stock	Value (JPY)	Share	PI (bps)
7638 NEW ART	136,519,280	12.56%	105.11
6740 JDI	653,372,710	13.92%	67.62
9263 VISIONAR	110,482,420	12.15%	55.23
5216 KURAMOT	135,502,390	8.07%	39.45
4712 KEYH	140,161,370	13.17%	30.35

Top Stocks by Savings

Stock	Value (JPY)	Share	Savings
4689 YAHOO J	6,487,057,880	12.03%	4,825,720
6740 JDI	653,372,710	13.92%	3,820,880
2768 SOJITZ	2,772,990,610	11.60%	1,880,540
9831 YAMDADK	2,994,892,550	12.03%	1,423,110
8410 SEVEN BK	1,471,963,040	14.52%	1,408,280

- ▶ Analysis is based on SBI Japannext and Thomson Reuters data. Large Cap = TPX100, Mid Cap = TPX500 excl. TPX100, Small Cap = Section1 + Section2 excl. TPX500.
- ▶ All Japan Turnover = Japannext (J+X+U+N) + TSE (excl. Tostnet) + Chi-X (excl. Chi-Match, Chi-Select). Market Share = Japannext turnover / All Japan Turnover.
- ▶ Price Improvement (PI) and Savings (PI*volume) are calculated by comparing the execution price against the primary market's best bid for each sell or best offer for each buy at the point of execution from the taker's perspective. Reported PI is a value-weighted average. Names with weekly traded value less than 100,000,000 JPY are excluded from the rankings tables.

Top Stocks by Universe

Topix 100

Stock	Value (JPY)	Share	PI (bps)
8411 MIZUHO	1,835,364,130	2.33%	6.33
9201 JAL	1,453,890,900	5.04%	1.57
7751 CANON	2,641,333,660	3.04%	1.75
6981 MURATA	2,071,893,800	1.73%	2.04
6501 HITACHI	1,822,447,740	2.39%	1.73
6098 RECRUIT	1,261,841,000	1.23%	1.90
8306 MUFG	1,618,646,490	0.88%	2.03
4502 TAKEDAP	2,875,888,600	1.52%	1.57
8316 SMFG	2,018,965,210	1.89%	1.39
7201 NISSAN	1,582,699,580	1.64%	1.39

Topix Mid400

Stock	Value (JPY)	Share	PI (bps)
7167 MEBUKIFG	836,977,080	15.45%	10.69
8410 SEVEN BK	1,471,963,040	14.52%	11.29
6472 NTN	1,641,740,450	16.56%	9.68
8515 AIFUL	1,274,452,880	9.52%	13.41
4689 YAHOO J	6,487,057,880	12.03%	9.40
7186 CONCRDIA	1,511,071,540	13.54%	7.72
2768 SOJITZ	2,772,990,610	11.6%	8.49
9831 YAMDADK	2,994,892,550	12.03%	6.23
1893 P-OCEAN	1,076,933,940	12.01%	5.79
4005 SMICHEM	2,302,018,160	10.55%	6.09

Small

Stock	Value (JPY)	Share	PI (bps)
6740 JDI	653,372,710	13.92%	67.62
8703 KABU.COM	1,771,913,710	30.69%	8.25
8585 OR.CORP	402,821,540	15.92%	26.75
6632 JVCKW	351,903,650	14.32%	11.76
9412 SKYPER J	247,471,950	15.65%	7.30
7599 IDOM	164,518,510	12.71%	9.08
5563 NP-DENK	107,254,270	10.17%	13.09
5480 NP-YAKN	433,444,270	9.94%	12.28
8698 MONEX G	1,596,549,970	12.18%	7.62
4714 RISO KY	207,104,160	12.86%	5.56

Mothers

Stock	Value (JPY)	Share	PI (bps)
8789 FINTECH	197,743,660	11.43%	26.80
4594 BRITPATH	196,810,950	6.75%	11.15
4397 TEAMSPRT	161,917,800	3.94%	16.66
4596 KUBOTAPH	332,662,920	5.36%	10.87
3652 DMP	210,278,500	3.33%	16.67
9450 FIBERGAT	213,807,750	3.07%	13.52
4563 ANGES	1,392,928,240	6.7%	6.04
2385 SOIKEN	169,957,590	2.94%	13.74
6182 ROZETTA	260,002,850	3.71%	10.78
3930 HATENA	137,495,800	3.57%	10.30

JASDAQ

Stock	Value (JPY)	Share	PI (bps)
2315 CAICA	59,629,110	12.92%	118.46
7638 NEW ART	136,519,280	12.56%	105.11
6628 ONKYO	38,171,490	11.57%	83.92
2134 SUNCAPTL	89,727,830	14.69%	51.55
9263 VISIONAR	110,482,420	12.15%	55.23
4712 KEYH	140,161,370	13.17%	30.35
5216 KURAMOT	135,502,390	8.07%	39.45
8704 TRADERS	51,099,740	8.58%	33.47
4347 BR-MEDIA	89,033,250	9.34%	30.51
4582 SYMBIO	447,273,280	16.85%	13.89

Second Section

Stock	Value (JPY)	Share	PI (bps)
9318 ASIADAVE	41,712,220	26.19%	526.39
3528 PROSPECT	61,753,450	20.86%	255.26
1491 CHUGAIM	11,200,130	14.2%	139.08
8925 ARDEPRO	41,462,610	21.1%	88.17
6993 DAIKOKYA	11,329,170	10.46%	92.44
6835 ALLIEDHD	24,380,400	11.6%	30.83
6731 PIXELA	19,650,300	9.45%	25.47
8105 MARUSHO	13,144,800	10.25%	23.17
5955 YAMASNA	10,785,170	6.91%	29.06
3113 OAK	13,213,730	11.51%	16.35

ETFs & REITs

Stock	Value (JPY)	Share	PI (bps)
8963 INV	1,166,526,950	10.02%	4.79
3269 ADR	372,898,800	6.6%	3.34
8985 JHR	817,078,990	7.66%	2.71
3281 GLP	620,632,160	9.51%	1.86
8952 JRE	797,114,500	4.64%	3.63
8951 NBF	1,125,419,400	5.03%	3.31
3309 SEKSUIHR	263,650,770	6.33%	2.50
1459 RK 225DI	854,849,070	6.56%	2.35
3279 API	608,117,400	6.75%	2.11
3227 MIDCITY	191,188,210	5.99%	2.33

- ▶ Best stocks are selected based on a combined score of turnover, market share and price improvement, and are listed here in order to illustrate a sample of stocks that trading on JNX venues can deliver benefits to our clients.
- ▶ The weights used in choosing the best stocks depend on the universe.