

Market Report for the Week of January 28, 2019

Daily Averages

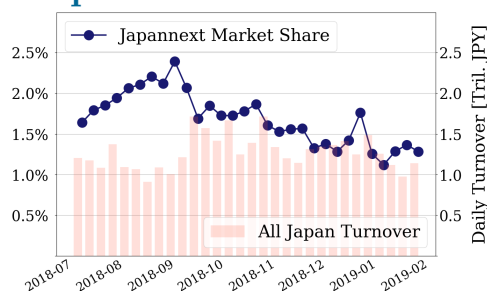
| Universe | Value (JPY) | Volume | Share | PI (bps) | Symbols |
|------------------|----------------|------------|--------|----------|---------|
| All Market | 84,026,470,884 | 69,422,809 | 2.99 % | 3.99 | 2791 |
| Large Cap | 14,624,119,142 | 6,784,240 | 1.28 % | 1.37 | 101 |
| Mid Cap | 43,123,413,022 | 29,558,700 | 4.65 % | 3.53 | 400 |
| Small Cap | 14,131,978,444 | 23,898,820 | 3.92 % | 7.18 | 1644 |
| Mothers & Jasdaq | 4,224,508,656 | 7,565,220 | 2.94 % | 10.75 | 552 |
| ETFs & REITs | 7,922,451,620 | 1,615,829 | 3.27 % | 2.03 | 95 |

All Market
3.0 %
Topix 100

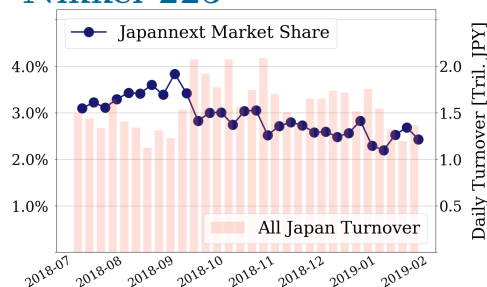
1.3 %
Nikkei 225

2.4 %

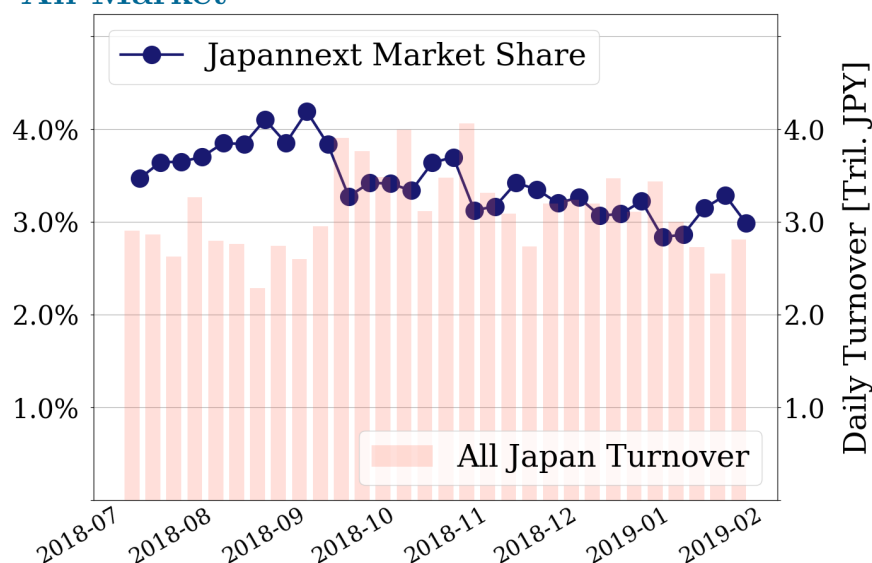
Topix 100



Nikkei 225



All Market



Top Stocks by Turnover

| Stock | Value (JPY) | Share | PI (bps) |
|---------------|----------------|-------|----------|
| 1570 NIKKEILV | 11,543,354,303 | 2.07% | 1.33 |
| 1357 NKDOUBLE | 8,326,726,436 | 5.04% | 1.65 |
| 9434 SOFTBANK | 5,706,530,160 | 2.19% | 1.39 |
| 9501 TEPCOHD | 5,355,638,570 | 5.20% | 3.60 |
| 7974 NINTEND | 3,918,635,000 | 0.97% | 1.97 |

Top Stocks by Market Share

| Stock | Value (JPY) | Share | PI (bps) |
|---------------|---------------|--------|----------|
| 6773 PIONEER | 312,963,570 | 29.43% | 66.60 |
| 3528 PROSPECT | 524,021,930 | 20.43% | 140.21 |
| 7167 MEBUKIFG | 1,123,563,780 | 17.74% | 9.51 |
| 9263 VISIONAR | 127,112,270 | 17.39% | 36.71 |
| 4582 SYMBIO | 479,631,750 | 15.62% | 13.56 |

Top Stocks by Price Improvement

| Stock | Value (JPY) | Share | PI (bps) |
|---------------|-------------|--------|----------|
| 3528 PROSPECT | 524,021,930 | 20.43% | 140.21 |
| 3250 ADWORKS | 250,901,100 | 2.64% | 89.14 |
| 6773 PIONEER | 312,963,570 | 29.43% | 66.60 |
| 6740 JDI | 738,159,530 | 9.86% | 47.70 |
| 9263 VISIONAR | 127,112,270 | 17.39% | 36.71 |

Top Stocks by Savings

| Stock | Value (JPY) | Share | Savings |
|---------------|---------------|--------|-----------|
| 3528 PROSPECT | 524,021,930 | 20.43% | 5,954,860 |
| 4689 YAHOO J | 3,829,065,900 | 14.48% | 3,618,680 |
| 6740 JDI | 738,159,530 | 9.86% | 2,263,190 |
| 3250 ADWORKS | 250,901,100 | 2.64% | 1,753,270 |
| 6773 PIONEER | 312,963,570 | 29.43% | 1,723,450 |

- ▶ Analysis is based on SBI Japannext and Thomson Reuters data. Large Cap = TPX100, Mid Cap = TPX500 excl. TPX100, Small Cap = Section1 + Section2 excl. TPX500.
- ▶ All Japan Turnover = Japannext (J+X+U+N) + TSE (excl. Tostnet) + Chi-X (excl. Chi-Match, Chi-Select). Market Share = Japannext turnover / All Japan Turnover.
- ▶ Price Improvement (PI) and Savings (PI*volume) are calculated by comparing the execution price against the primary market's best bid for each sell or best offer for each buy at the point of execution from the taker's perspective. Reported PI is a value-weighted average. Names with weekly traded value less than 100,000,000 JPY are excluded from the rankings tables.

Top Stocks by Universe

Topix 100

| Stock | Value (JPY) | Share | PI (bps) |
|---------------|---------------|-------|----------|
| 8411 MIZUHO | 2,041,699,240 | 1.84% | 5.65 |
| 6702 FUJITSU | 956,999,180 | 1.87% | 2.07 |
| 4661 OLC | 853,809,100 | 2.64% | 1.82 |
| 8058 MITBISI | 1,146,793,310 | 1.89% | 1.87 |
| 7974 NINTEND | 3,918,635,000 | 0.97% | 1.97 |
| 7267 HONDA | 906,771,570 | 1.57% | 1.63 |
| 6758 SONY | 1,156,835,040 | 0.83% | 1.93 |
| 4911 SHISEIDO | 887,066,060 | 1.16% | 1.69 |
| 4063 SINETUC | 1,696,706,840 | 1.63% | 1.47 |
| 6367 DAIKINI | 1,226,011,880 | 2.0% | 1.27 |

Topix Mid400

| Stock | Value (JPY) | Share | PI (bps) |
|---------------|---------------|--------|----------|
| 7167 MEBUKIFG | 1,123,563,780 | 17.74% | 9.51 |
| 4689 YAHOO J | 3,829,065,900 | 14.48% | 11.26 |
| 6472 NTN | 1,592,931,470 | 14.97% | 7.83 |
| 8515 AIFUL | 673,730,060 | 12.54% | 9.40 |
| 8410 SEVEN BK | 833,275,600 | 13.03% | 8.86 |
| 2768 SOJITZ | 2,495,584,620 | 11.99% | 7.44 |
| 7186 CONCRDIA | 1,351,797,500 | 11.37% | 7.33 |
| 3765 GUNGHO | 1,267,296,840 | 8.37% | 9.70 |
| 9831 YAMDADK | 1,404,985,600 | 12.05% | 5.63 |
| 4324 DENTSU | 2,762,990,100 | 11.08% | 5.82 |

Small

| Stock | Value (JPY) | Share | PI (bps) |
|--------------|-------------|--------|----------|
| 6773 PIONEER | 312,963,570 | 29.43% | 66.60 |
| 2353 NP-PARK | 187,037,930 | 13.05% | 20.24 |
| 6740 JDI | 738,159,530 | 9.86% | 47.70 |
| 1983 TOS-PLA | 310,031,150 | 13.9% | 4.32 |
| 8585 OR.CORP | 448,986,620 | 10.85% | 22.62 |
| 5912 OSJBHD | 129,403,250 | 12.21% | 8.64 |
| 5480 NP-YAKN | 468,421,280 | 11.83% | 10.40 |
| 5563 NP-DENK | 106,463,070 | 11.77% | 10.67 |
| 1973 NESIC | 271,936,250 | 11.65% | 3.47 |
| 8114 DESCENT | 312,894,270 | 11.9% | 2.22 |

Mothers

| Stock | Value (JPY) | Share | PI (bps) |
|---------------|---------------|--------|----------|
| 8789 FINTECH | 269,653,790 | 11.62% | 17.92 |
| 4594 BRITPATH | 164,700,750 | 8.58% | 11.21 |
| 4397 TEAMSPRT | 152,129,400 | 4.07% | 15.35 |
| 4381 BPLATS | 134,361,900 | 2.28% | 17.38 |
| 6033 EXTREME | 322,937,750 | 5.13% | 10.03 |
| 2160 GNI | 253,926,180 | 6.63% | 5.88 |
| 3989 SHARINGT | 139,641,010 | 4.56% | 7.04 |
| 4588 ONCOLYS | 440,175,290 | 3.26% | 8.41 |
| 3906 ALBERT | 292,510,000 | 3.09% | 8.57 |
| 3990 UUM | 1,529,111,600 | 3.08% | 8.58 |

JASDAQ

| Stock | Value (JPY) | Share | PI (bps) |
|---------------|-------------|--------|----------|
| 2315 CAICA | 75,237,150 | 11.32% | 127.93 |
| 2134 SUNCAPTL | 55,017,230 | 16.82% | 51.99 |
| 2388 WEDGE-HD | 32,612,460 | 7.63% | 67.51 |
| 8704 TRADERS | 32,982,680 | 15.35% | 46.37 |
| 9263 VISIONAR | 127,112,270 | 17.39% | 36.71 |
| 4347 BR-MEDIA | 41,125,740 | 9.04% | 47.81 |
| 6819 IZU SR | 40,094,510 | 14.95% | 24.22 |
| 4582 SYMBIO | 479,631,750 | 15.62% | 13.56 |
| 4978 REPROCEL | 74,586,550 | 14.73% | 12.89 |
| 3323 RECOMM | 194,589,400 | 13.68% | 12.93 |

Second Section

| Stock | Value (JPY) | Share | PI (bps) |
|---------------|-------------|--------|----------|
| 3528 PROSPECT | 524,021,930 | 20.43% | 140.21 |
| 8925 ARDEPRO | 31,233,610 | 20.72% | 70.09 |
| 7647 ONTSU | 26,261,600 | 1.98% | 109.04 |
| 7831 WELLCOHD | 64,101,280 | 3.76% | 41.76 |
| 6835 ALLIEDHD | 55,072,960 | 12.45% | 22.29 |
| 3113 OAK | 19,615,980 | 12.95% | 16.97 |
| 6731 PIXELA | 39,203,080 | 9.95% | 19.82 |
| 6786 RVH | 16,646,470 | 3.1% | 33.40 |
| 3856 ABALANCE | 35,023,550 | 8.97% | 20.39 |
| 8226 RIKEI | 45,977,270 | 4.26% | 24.93 |

ETFs & REITs

| Stock | Value (JPY) | Share | PI (bps) |
|---------------|---------------|--------|----------|
| 8985 JHR | 1,535,418,650 | 10.54% | 3.19 |
| 8963 INV | 799,084,300 | 10.78% | 2.60 |
| 3309 SEKSUIHR | 371,594,050 | 7.84% | 3.09 |
| 8951 NBF | 1,943,990,000 | 7.22% | 3.04 |
| 8952 JRE | 1,240,240,700 | 6.34% | 3.59 |
| 3226 ACCOMMO | 277,389,800 | 4.86% | 4.50 |
| 3281 GLP | 721,447,030 | 8.49% | 1.85 |
| 1459 RK 225DI | 510,972,320 | 4.84% | 3.87 |
| 8972 KENEDIXO | 430,802,900 | 6.1% | 2.72 |
| 3279 API | 528,850,400 | 6.49% | 2.27 |

- ▶ Best stocks are selected based on a combined score of turnover, market share and price improvement, and are listed here in order to illustrate a sample of stocks that trading on JNX venues can deliver benefits to our clients.
- ▶ The weights used in choosing the best stocks depend on the universe.