

Market Report for the Week of September 18, 2017

Daily Averages

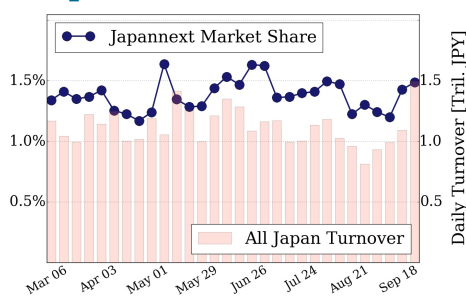
| Universe | Value (JPY) | Volume | Share | PI (bps) | Symbols |
|------------------|-----------------|-------------|--------|----------|---------|
| All Market | 104,473,409,819 | 157,705,512 | 3.07 % | 5.71 | 2444 |
| Large Cap | 22,253,745,285 | 11,742,175 | 1.49 % | 1.26 | 99 |
| Mid Cap | 53,081,023,042 | 53,178,300 | 5.40 % | 5.39 | 398 |
| Small Cap | 18,803,094,460 | 83,272,875 | 3.43 % | 11.37 | 1354 |
| Mothers & Jasadq | 4,689,030,237 | 8,351,000 | 2.91 % | 10.36 | 506 |
| ETFs & REITs | 5,646,516,794 | 1,161,162 | 2.73 % | 3.05 | 88 |

All Market
3.1 %

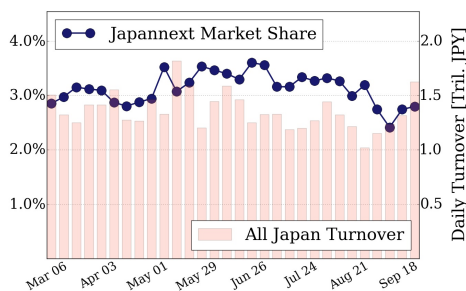
Topix 100
1.5 %

Nikkei 225
2.8 %

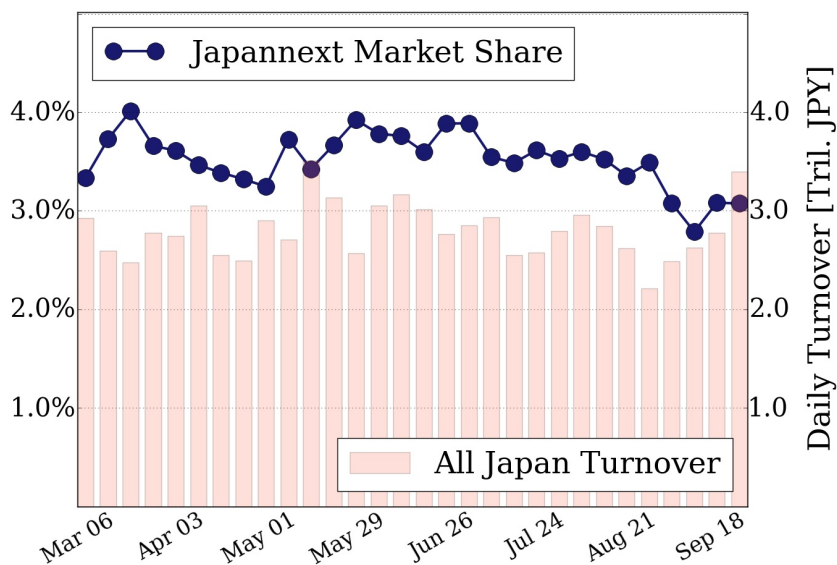
Topix 100



Nikkei 225



All Market



Top Stocks by Turnover

| Stock | Value (JPY) | Share | PI (bps) |
|---------------|---------------|--------|----------|
| 7974 NINTEND | 9,815,093,000 | 1.08% | 1.50 |
| 1570 NIKKEILV | 6,768,683,054 | 1.68% | 2.12 |
| 6502 TOSHIBA | 6,413,394,100 | 10.34% | 7.63 |
| 1357 NKDOUBLE | 4,322,727,566 | 4.38% | 2.52 |
| 7012 KHI | 4,236,070,300 | 15.60% | 9.35 |

Top Stocks by Market Share

| Stock | Value (JPY) | Share | PI (bps) |
|--------------|---------------|--------|----------|
| 8107 KIMRTAN | 1,208,849,700 | 48.20% | 674.53 |
| 3002 GUNZE | 448,316,800 | 15.76% | 5.93 |
| 7012 KHI | 4,236,070,300 | 15.60% | 9.35 |
| 3390 INEST | 370,737,730 | 15.13% | 14.46 |
| 4208 UBE IND | 2,133,113,600 | 14.98% | 11.49 |

Top Stocks by Price Improvement

| Stock | Value (JPY) | Share | PI (bps) |
|--------------|---------------|--------|----------|
| 8107 KIMRTAN | 1,208,849,700 | 48.20% | 674.53 |
| 5609 NCHUZO | 116,834,600 | 2.03% | 54.24 |
| 2315 CAICA | 444,099,750 | 9.69% | 40.59 |
| 3103 UNITIKA | 105,813,400 | 3.75% | 36.45 |
| 3521 ECONACH | 102,585,600 | 4.05% | 32.18 |

Top Stocks by Savings

| Stock | Value (JPY) | Share | Savings |
|--------------|---------------|--------|------------|
| 8107 KIMRTAN | 1,208,849,700 | 48.20% | 18,084,100 |
| 9101 NYKLINE | 4,210,179,600 | 14.31% | 5,636,700 |
| 8303 SHINSEI | 2,625,456,100 | 14.71% | 4,288,300 |
| 7012 KHI | 4,236,070,300 | 15.60% | 3,340,800 |
| 6502 TOSHIBA | 6,413,394,100 | 10.34% | 3,076,900 |

- ▶ Analysis is based on SBI Japannext and Thomson Reuters data. Large Cap = TPX100, Mid Cap = TPX500 excl. TPX100, Small Cap = Section1 + Section2 excl. TPX500.
- ▶ All Japan Turnover = Japannext (J+X+U+N) + TSE (excl. Tostnet) + Chi-X (excl. Chi-Match, Chi-Select). Market Share = Japannext turnover / All Japan Turnover.
- ▶ Price Improvement (PI) and Savings (PI*volume) are calculated by comparing the execution price against the primary market's best bid for each sell or best offer for each buy at the point of execution from the taker's perspective. Reported PI is a value-weighted average. Names with weekly traded value less than 100,000,000 JPY are excluded from the rankings tables.