

# Market Report for the Week of September 11, 2017

## Daily Averages

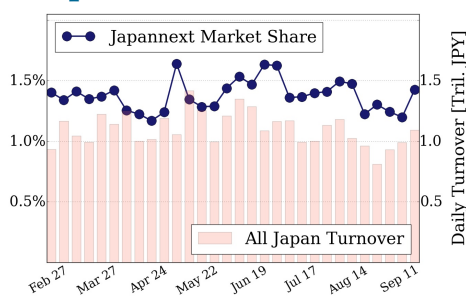
| Universe         | Value (JPY)    | Volume     | Share  | PI (bps) | Symbols |
|------------------|----------------|------------|--------|----------|---------|
| All Market       | 85,651,223,243 | 99,602,509 | 3.08 % | 5.37     | 2401    |
| Large Cap        | 15,556,656,118 | 8,141,060  | 1.43 % | 1.24     | 99      |
| Mid Cap          | 44,530,995,544 | 42,904,260 | 5.21 % | 5.20     | 398     |
| Small Cap        | 16,461,284,746 | 39,110,820 | 3.18 % | 9.01     | 1325    |
| Mothers & Jasadq | 4,293,124,318  | 8,275,700  | 2.86 % | 10.93    | 491     |
| ETFs & REITs     | 4,809,162,517  | 1,170,669  | 2.91 % | 3.58     | 88      |

All Market  
**3.1 %**

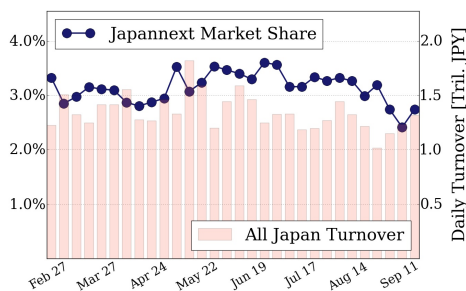
Topix 100  
**1.4 %**

Nikkei 225  
**2.7 %**

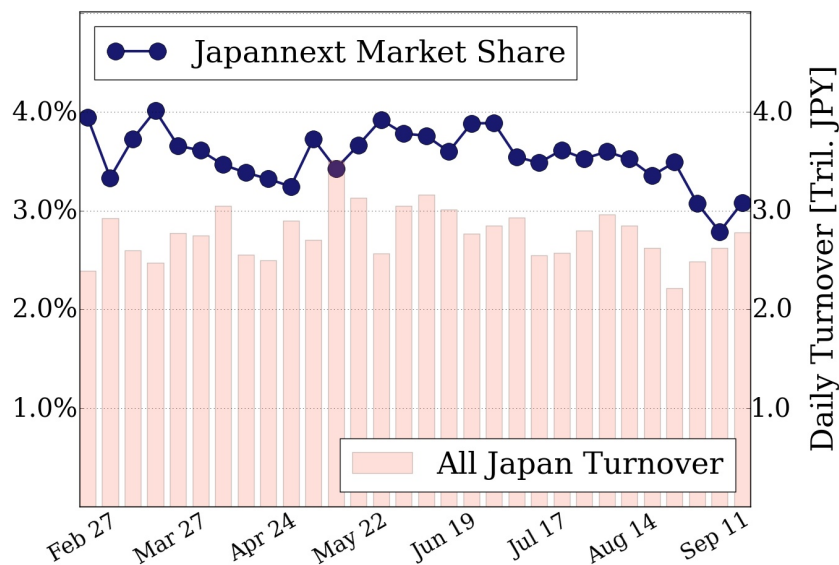
### Topix 100



### Nikkei 225



### All Market



## Top Stocks by Turnover

| Stock         | Value (JPY)   | Share  | PI (bps) |
|---------------|---------------|--------|----------|
| 1570 NIKKEILV | 7,408,522,847 | 1.91%  | 2.44     |
| 6502 TOSHIBA  | 6,298,743,000 | 11.28% | 8.76     |
| 1357 NKDOUBLE | 4,851,159,992 | 4.37%  | 2.16     |
| 7974 NINTEND  | 4,676,825,000 | 1.23%  | 1.54     |
| 4689 YAHOO J  | 4,453,234,890 | 13.19% | 6.98     |

## Top Stocks by Market Share

| Stock        | Value (JPY)   | Share  | PI (bps) |
|--------------|---------------|--------|----------|
| 7003 MTI-E&S | 826,560,500   | 18.21% | 29.54    |
| 3002 GUNZE   | 467,309,300   | 15.27% | 6.90     |
| 6701 NEC     | 2,090,385,200 | 15.10% | 11.54    |
| 5703 NLM HD  | 1,006,733,710 | 13.69% | 13.38    |
| 8304 AOZORA  | 1,712,799,800 | 13.27% | 8.98     |

## Top Stocks by Price Improvement

| Stock         | Value (JPY) | Share  | PI (bps) |
|---------------|-------------|--------|----------|
| 8107 KIMRTAN  | 186,822,000 | 9.94%  | 650.95   |
| 9318 ASIADAVE | 191,496,010 | 11.04% | 248.85   |
| 3528 PROSPECT | 281,811,900 | 13.24% | 43.52    |
| 2315 CAICA    | 473,079,320 | 7.09%  | 41.27    |
| 3103 UNITIKA  | 122,840,600 | 3.21%  | 37.21    |

## Top Stocks by Savings

| Stock        | Value (JPY)   | Share  | Savings   |
|--------------|---------------|--------|-----------|
| 8107 KIMRTAN | 186,822,000   | 9.94%  | 8,833,100 |
| 9101 NYKLINE | 2,605,552,100 | 10.97% | 3,945,700 |
| 6502 TOSHIBA | 6,298,743,000 | 11.28% | 3,612,800 |
| 8303 SHINSEI | 1,527,060,400 | 12.55% | 2,817,900 |
| 7012 KHI     | 3,081,681,700 | 10.94% | 2,464,400 |

- ▶ Analysis is based on SBI Japannext and Thomson Reuters data. Large Cap = TPX100, Mid Cap = TPX500 excl. TPX100, Small Cap = Section1 + Section2 excl. TPX500.
- ▶ All Japan Turnover = Japannext (J+X+U+N) + TSE (excl. Tostnet) + Chi-X (excl. Chi-Match, Chi-Select). Market Share = Japannext turnover / All Japan Turnover.
- ▶ Price Improvement (PI) and Savings (PI\*volume) are calculated by comparing the execution price against the primary market's best bid for each sell or best offer for each buy at the point of execution from the taker's perspective. Reported PI is a value-weighted average. Names with weekly traded value less than 100,000,000 JPY are excluded from the rankings tables.