

# Market Report for the Week of July 17, 2017

## Daily Averages

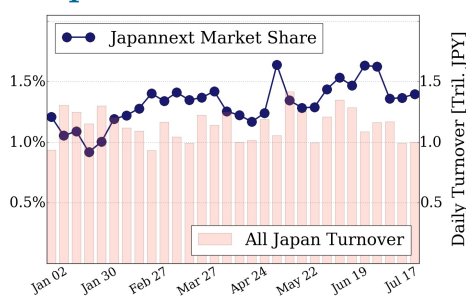
Universe	Value (JPY)	Volume	Share	PI (bps)	Symbols
All Market	93,031,548,180	110,611,222	3.61 %	5.36	2314
Large Cap	13,993,196,922	9,060,825	1.40 %	1.36	100
Mid Cap	51,069,596,112	45,059,900	6.63 %	4.95	398
Small Cap	16,819,248,095	41,533,025	3.70 %	8.92	1254
Mothers & Jasdaq	7,752,239,537	13,632,200	3.78 %	9.90	477
ETFs & REITs	3,397,267,512	1,325,272	2.43 %	3.85	86

All Market  
**3.6 %**

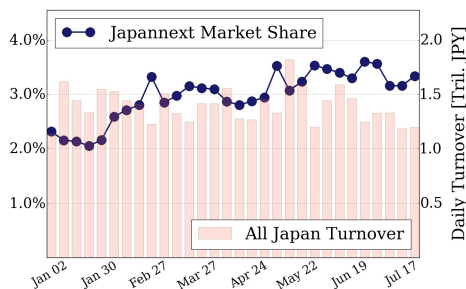
Topix 100  
**1.4 %**

Nikkei 225  
**3.3 %**

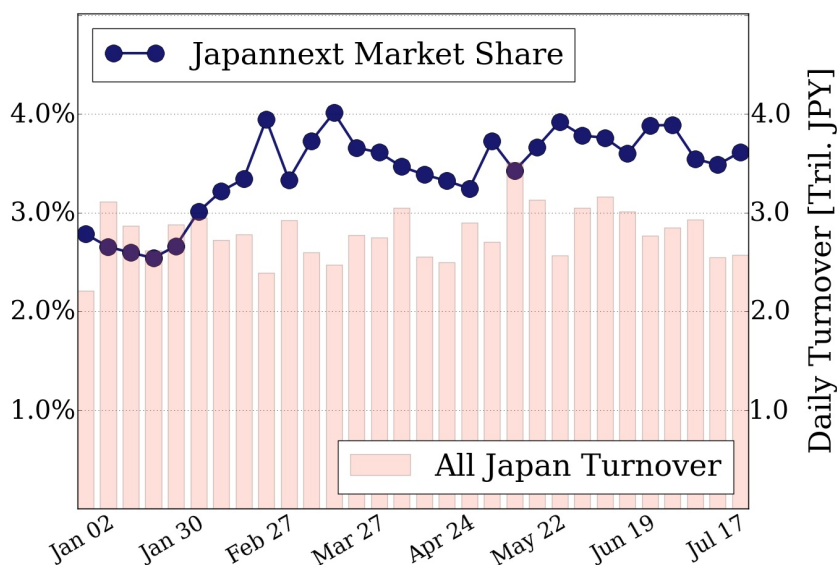
### Topix 100



### Nikkei 225



### All Market



### Top Stocks by Turnover

Stock	Value (JPY)	Share	PI (bps)
6762 TDK	4,747,612,400	8.17%	3.88
4689 YAHOO J	4,716,576,680	14.71%	6.67
1570 NIKKEILV	4,111,098,160	1.57%	1.01
7974 NINTEND	3,303,287,500	0.82%	1.77
4563 ANGES	3,284,791,080	4.26%	5.30

### Top Stocks by Market Share

Stock	Value (JPY)	Share	PI (bps)
8918 LAND	568,119,100	23.16%	195.71
8840 DAIKYO	283,978,400	21.48%	16.10
5233 PC CEMENT	2,248,595,200	21.32%	9.96
7003 MTI-E&S	457,175,900	19.17%	27.47
3002 GUNZE	273,621,000	19.11%	7.93

### Top Stocks by Price Improvement

Stock	Value (JPY)	Share	PI (bps)
8918 LAND	568,119,100	23.16%	195.71
6775 TB GROUP	357,314,800	5.23%	102.11
7312 TAKATA	203,855,860	4.75%	63.16
2315 CAICA	204,637,180	9.82%	61.02
5609 NCHUZO	161,053,400	3.21%	59.44

### Top Stocks by Savings

Stock	Value (JPY)	Share	Savings
8918 LAND	568,119,100	23.16%	7,246,370
8303 SHINSEI	1,427,698,900	14.60%	2,428,500
4689 YAHOO J	4,716,576,680	14.71%	2,256,770
4208 UBE IND	2,305,074,200	16.12%	2,226,200
5233 PC CEMENT	2,248,595,200	21.32%	1,964,700

- ▶ Analysis is based on SBI Japannext and Thomson Reuters data. Large Cap = TPX100, Mid Cap = TPX500 excl. TPX100, Small Cap = Section1 + Section2 excl. TPX500.
- ▶ All Japan Turnover = Japannext (J+X+U+N) + TSE (excl. Tostnet) + Chi-X (excl. Chi-Match, Chi-Select). Market Share = Japannext turnover / All Japan Turnover.
- ▶ Price Improvement (PI) and Savings (PI\*volume) are calculated by comparing the execution price against the primary market's best bid for each sell or best offer for each buy at the point of execution from the taker's perspective. Reported PI is a value-weighted average. Names with weekly traded value less than 100,000,000 JPY are excluded from the rankings tables.