

Market Report for the Week of May 01, 2017

Daily Averages

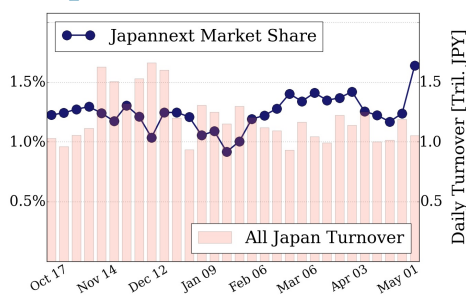
Universe	Value (JPY)	Volume	Share	PI (bps)	Symbols
All Market	100,861,382,807	111,563,879	3.73 %	5.52	2134
Large Cap	17,262,433,885	11,654,750	1.64 %	1.43	100
Mid Cap	61,559,905,915	64,376,950	6.61 %	5.60	390
Small Cap	13,382,199,710	28,206,500	3.26 %	8.43	1145
Mothers & Jasdaq	4,720,608,330	6,167,350	3.11 %	10.45	411
ETFs & REITs	3,936,234,967	1,158,329	2.47 %	3.61	88

All Market
3.7 %

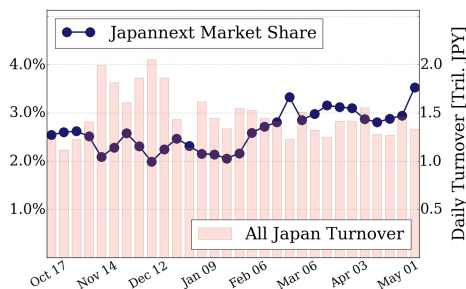
Topix 100
1.6 %

Nikkei 225
3.5 %

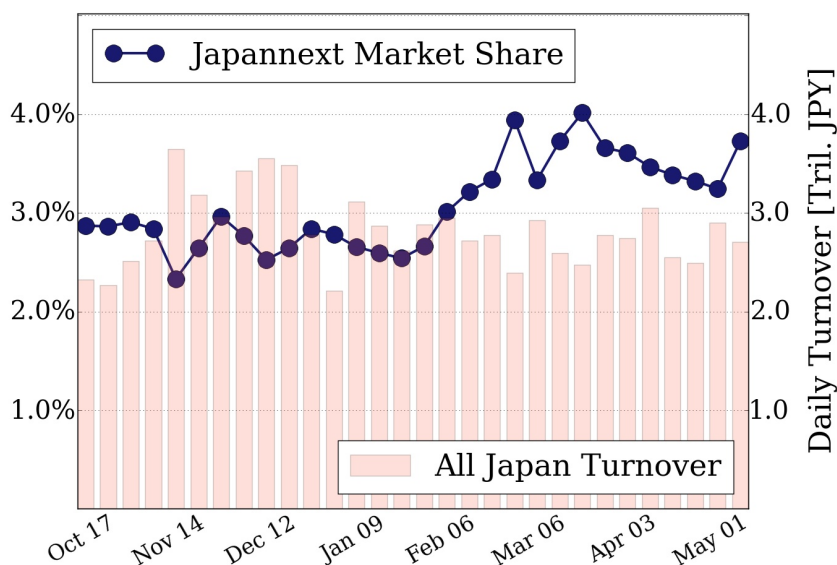
Topix 100



Nikkei 225



All Market



Top Stocks by Turnover

Stock	Value (JPY)	Share	PI (bps)
1570 NIKKEILV	2,648,963,211	1.57%	1.68
4689 YAHOO J	2,603,865,870	12.56%	7.22
6645 OMRON	2,331,361,400	11.86%	3.70
6753 SHARP	2,305,216,400	11.54%	7.45
6963 ROHM	2,111,359,400	5.92%	3.45

Top Stocks by Market Share

Stock	Value (JPY)	Share	PI (bps)
4208 UBE IND	491,910,100	20.61%	13.32
9101 NYKLINE	1,909,446,800	19.26%	15.90
8840 DAIKYO	126,915,800	19.25%	16.36
2897 NISINFDH	719,248,000	19.18%	5.71
9104 MTI-OSK	1,402,505,000	19.05%	10.41

Top Stocks by Price Improvement

Stock	Value (JPY)	Share	PI (bps)
1552 VIXSHORT	134,925,003	11.67%	44.87
3103 UNITIKA	146,983,600	6.12%	32.40
1821 MS-CON	102,662,090	14.16%	27.06
2788 APLEIN	183,080,850	3.52%	23.53
7003 MTI-E&S	709,976,300	18.02%	21.81

Top Stocks by Savings

Stock	Value (JPY)	Share	Savings
9101 NYKLINE	1,909,446,800	19.26%	2,536,000
8303 SHINSEI	1,264,200,600	15.43%	1,805,100
4689 YAHOO J	2,603,865,870	12.56%	1,613,310
7013 IHI	2,051,707,700	14.11%	1,580,800
2768 SOJITZ	1,365,991,810	11.17%	1,439,690

- ▶ Analysis is based on SBI Japannext and Thomson Reuters data. Large Cap = TPX100, Mid Cap = TPX500 excl. TPX100, Small Cap = Section1 + Section2 excl. TPX500.
- ▶ All Japan Turnover = Japannext (J+X+U+N) + TSE (excl. Tostnet) + Chi-X (excl. Chi-Match, Chi-Select). Market Share = Japannext turnover / All Japan Turnover.
- ▶ Price Improvement (PI) and Savings (PI*volume) are calculated by comparing the execution price against the primary market's best bid for each sell or best offer for each buy at the point of execution from the taker's perspective. Reported PI is a value-weighted average. Names with weekly traded value less than 100,000,000 JPY are excluded from the rankings tables.