

Market Report for the Week of April 17, 2017

Daily Averages

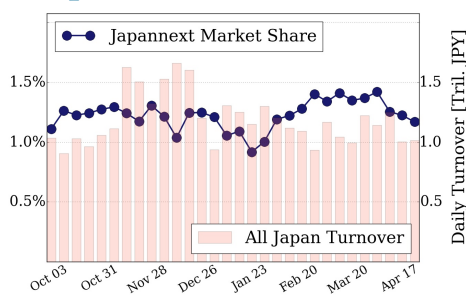
| Universe | Value (JPY) | Volume | Share | PI (bps) | Symbols |
|-----------------|----------------|------------|--------|----------|---------|
| All Market | 82,877,813,542 | 99,498,230 | 3.32 % | 5.36 | 2159 |
| Large Cap | 11,863,637,922 | 7,442,940 | 1.17 % | 1.58 | 100 |
| Mid Cap | 49,933,331,388 | 56,548,720 | 6.14 % | 5.40 | 398 |
| Small Cap | 12,421,324,492 | 28,521,580 | 3.69 % | 7.68 | 1172 |
| Mothers & Jasdq | 4,714,930,432 | 5,961,480 | 2.70 % | 9.99 | 403 |
| ETFs & REITs | 3,944,589,308 | 1,023,510 | 2.55 % | 2.92 | 86 |

All Market
3.3 %

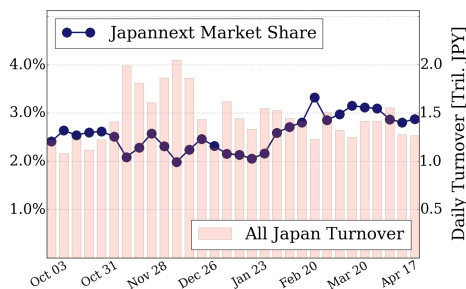
Topix 100
1.2 %

Nikkei 225
2.9 %

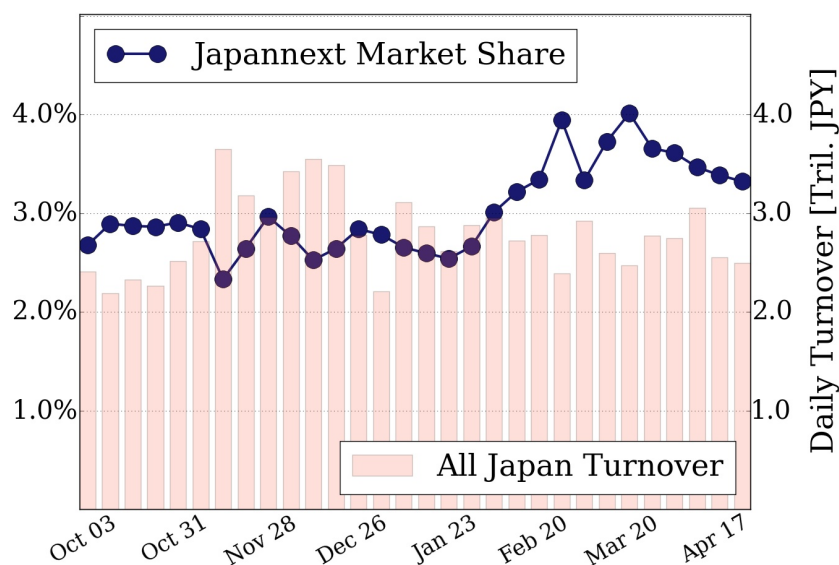
Topix 100



Nikkei 225



All Market



Top Stocks by Turnover

| Stock | Value (JPY) | Share | PI (bps) |
|---------------|---------------|--------|----------|
| 6753 SHARP | 8,780,514,200 | 7.85% | 6.88 |
| 1570 NIKKEILV | 6,138,113,077 | 1.66% | 1.75 |
| 4689 YAHOO J | 5,111,634,550 | 14.73% | 6.76 |
| 8303 SHINSEI | 3,763,152,100 | 17.18% | 16.94 |
| 9104 MTI-OSK | 3,724,308,800 | 15.64% | 10.27 |

Top Stocks by Market Share

| Stock | Value (JPY) | Share | PI (bps) |
|--------------|---------------|--------|----------|
| 7003 MTI-E&S | 1,035,439,000 | 19.80% | 23.40 |
| 8840 DAIKYO | 427,863,100 | 17.38% | 12.70 |
| 3002 GUNZE | 314,116,800 | 17.30% | 7.13 |
| 8303 SHINSEI | 3,763,152,100 | 17.18% | 16.94 |
| 8918 LAND | 150,112,440 | 17.13% | 202.05 |

Top Stocks by Price Improvement

| Stock | Value (JPY) | Share | PI (bps) |
|---------------|-------------|--------|----------|
| 8918 LAND | 150,112,440 | 17.13% | 202.05 |
| 8023 DAIKO D | 105,868,100 | 5.38% | 46.88 |
| 3606 RENOWN | 441,562,860 | 4.01% | 43.09 |
| 4585 UMNPHARM | 176,459,200 | 8.86% | 33.12 |
| 3318 MEGASUP | 103,034,430 | 4.19% | 31.98 |

Top Stocks by Savings

| Stock | Value (JPY) | Share | Savings |
|--------------|---------------|--------|-----------|
| 8303 SHINSEI | 3,763,152,100 | 17.18% | 5,148,400 |
| 9101 NYKLINE | 3,382,915,400 | 12.88% | 4,283,100 |
| 9104 MTI-OSK | 3,724,308,800 | 15.64% | 3,032,900 |
| 4689 YAHOO J | 5,111,634,550 | 14.73% | 2,695,640 |
| 7012 KHI | 2,942,039,400 | 15.10% | 2,688,200 |

- ▶ Analysis is based on SBI Japannext and Thomson Reuters data. Large Cap = TPX100, Mid Cap = TPX500 excl. TPX100, Small Cap = Section1 + Section2 excl. TPX500.
- ▶ All Japan Turnover = Japannext (J+X+U+N) + TSE (excl. Tostnet) + Chi-X (excl. Chi-Match, Chi-Select). Market Share = Japannext turnover / All Japan Turnover.
- ▶ Price Improvement (PI) and Savings (PI*volume) are calculated by comparing the execution price against the primary market's best bid for each sell or best offer for each buy at the point of execution from the taker's perspective. Reported PI is a value-weighted average. Names with weekly traded value less than 100,000,000 JPY are excluded from the rankings tables.