

Market Report for the Week of February 20, 2017

Daily Averages

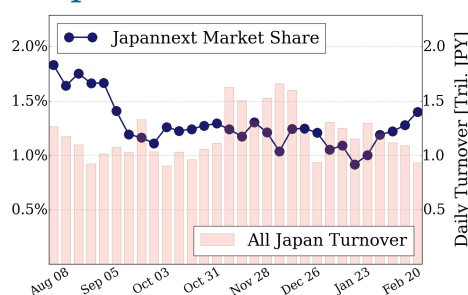
Universe	Value (JPY)	Volume	Share	PI (bps)	Symbols
All Market	94,328,729,616	106,562,690	3.94 %	4.92	2272
Large Cap	13,078,284,274	10,148,160	1.40 %	1.56	100
Mid Cap	56,862,696,132	60,440,260	7.10 %	4.95	401
Small Cap	14,925,805,968	28,599,140	4.52 %	6.58	1275
Mothers & Jasdaq	4,995,814,462	6,736,040	2.75 %	8.03	409
ETFs & REITs	4,466,128,780	639,090	3.09 %	2.90	87

All Market
3.9 %

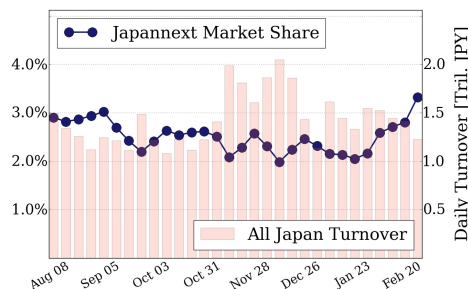
Topix 100
1.4 %

Nikkei 225
3.3 %

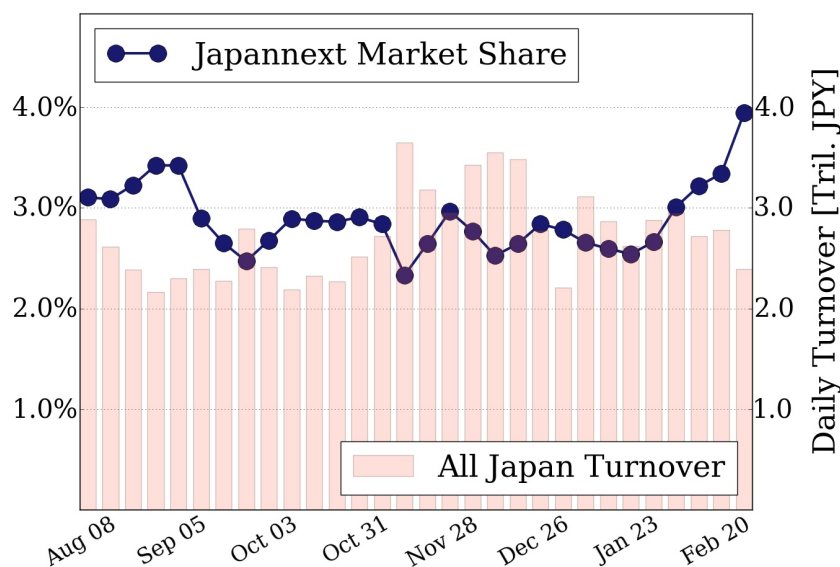
Topix 100



Nikkei 225



All Market



Top Stocks by Turnover

Stock	Value (JPY)	Share	PI (bps)
1570 NIKKEILV	6,585,720,768	1.90%	1.54
4689 YAHOO J	5,032,015,790	13.82%	7.02
4324 DENTSU	3,863,991,600	9.79%	5.20
9104 MTI-OSK	3,860,588,900	12.78%	8.60
7012 KHI	3,706,215,700	14.93%	9.99

Top Stocks by Market Share

Stock	Value (JPY)	Share	PI (bps)
3002 GUNZE	306,117,900	23.06%	7.74
4684 OBIC	1,058,251,600	18.75%	6.31
5232 SMI-OSK	1,845,705,300	18.59%	7.41
8840 DAIKYO	559,620,500	18.54%	12.88
5471 DAID-ST	725,396,100	18.13%	6.45

Top Stocks by Price Improvement

Stock	Value (JPY)	Share	PI (bps)
8918 LAND	242,312,530	12.14%	159.11
6628 ONKYO	226,964,980	2.93%	63.54
3103 UNITIKA	498,753,900	7.11%	36.77
1552 VIXSHORT	138,644,567	3.93%	31.97
1821 MS-CON	413,471,710	13.57%	27.04

Top Stocks by Savings

Stock	Value (JPY)	Share	Savings
9101 NYKLINE	3,663,069,000	10.56%	3,627,200
6701 NEC	2,988,424,700	10.96%	3,080,400
7012 KHI	3,706,215,700	14.93%	3,065,200
4689 YAHOO J	5,032,015,790	13.82%	2,865,050
7013 IHI	3,530,639,900	14.35%	2,705,300

- ▶ Analysis is based on SBI Japannext and Thomson Reuters data. Large Cap = TPX100, Mid Cap = TPX500 excl. TPX100, Small Cap = Section1 + Section2 excl. TPX500.
- ▶ All Japan Turnover = Japannext (J+X+U+N) + TSE (excl. Tostnet) + Chi-X (excl. Chi-Match, Chi-Select). Market Share = Japannext turnover / All Japan Turnover.
- ▶ Price Improvement (PI) and Savings (PI*volume) are calculated by comparing the execution price against the primary market's best bid for each sell or best offer for each buy at the point of execution from the taker's perspective. Reported PI is a value-weighted average. Names with weekly traded value less than 100,000,000 JPY are excluded from the rankings tables.