

Market Report for the Week of February 13, 2017

Daily Averages

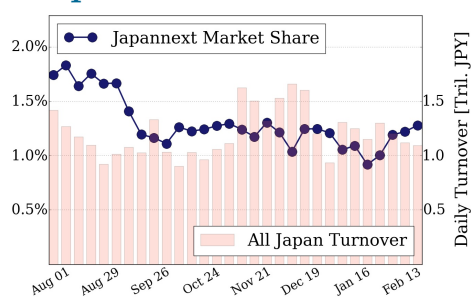
Universe	Value (JPY)	Volume	Share	PI (bps)	Symbols
All Market	92,837,004,990	107,238,963	3.34 %	5.30	2253
Large Cap	13,959,760,416	10,460,900	1.28 %	1.54	100
Mid Cap	53,324,319,590	54,676,460	5.87 %	5.19	401
Small Cap	15,036,701,286	31,799,840	3.79 %	7.86	1259
Mothers & Jasdaq	5,458,162,916	9,068,480	2.94 %	9.29	406
ETFs & REITs	5,058,060,782	1,233,283	2.60 %	3.09	86

All Market
3.3 %

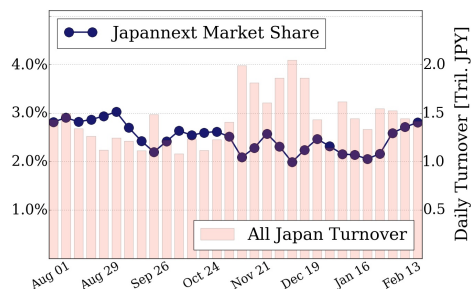
Topix 100
1.3 %

Nikkei 225
2.8 %

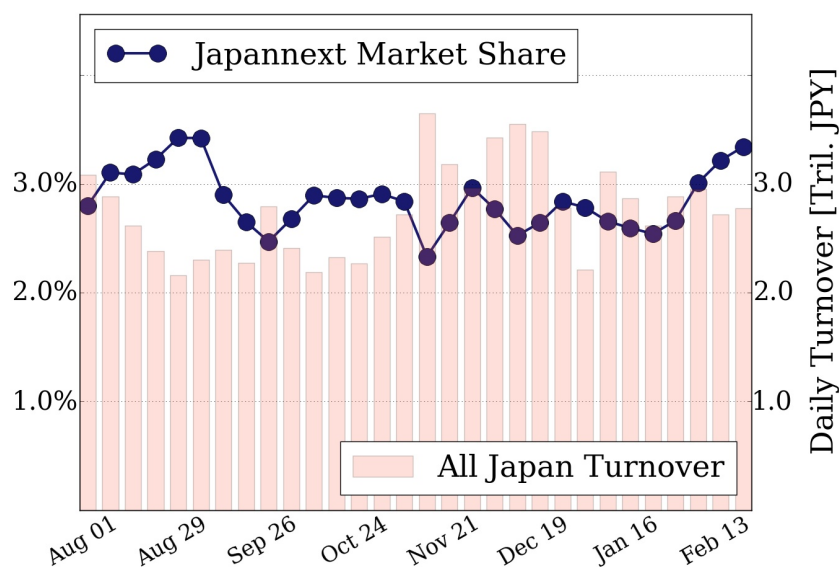
Topix 100



Nikkei 225



All Market



Top Stocks by Turnover

Stock	Value (JPY)	Share	PI (bps)
1570 NIKKEILV	9,516,640,040	1.84%	1.70
6753 SHARP	4,501,855,600	8.60%	8.25
6098 RECRUIT	4,200,030,500	9.98%	5.47
5706 MTI-M&S	3,879,046,800	7.67%	8.83
4689 YAHOO J	3,864,968,590	10.32%	6.86

Top Stocks by Market Share

Stock	Value (JPY)	Share	PI (bps)
7003 MTI-E&S	1,399,878,100	19.78%	23.69
3088 MA-KIYO	1,491,757,400	17.75%	7.00
8986 J RENTAL	281,102,020	17.32%	6.08
3002 GUNZE	315,149,700	17.30%	7.21
4684 OBIC	1,025,600,400	16.26%	6.96

Top Stocks by Price Improvement

Stock	Value (JPY)	Share	PI (bps)
8918 LAND	223,615,210	9.82%	172.60
3103 UNITIKA	261,598,000	4.64%	37.96
1552 VIXSHORT	371,729,676	7.75%	28.46
1821 MS-CON	313,301,030	8.14%	26.67
3528 PROSPECT	321,471,200	7.33%	24.93

Top Stocks by Savings

Stock	Value (JPY)	Share	Savings
9101 NYKLIN	3,777,312,300	12.55%	4,346,300
4208 UBE IND	2,513,939,500	12.62%	2,969,400
7003 MTI-E&S	1,399,878,100	19.78%	2,968,000
8918 LAND	223,615,210	9.82%	2,800,550
6701 NEC	2,978,994,300	11.76%	2,782,200

- ▶ Analysis is based on SBI Japannext and Thomson Reuters data. Large Cap = TPX100, Mid Cap = TPX500 excl. TPX100, Small Cap = Section1 + Section2 excl. TPX500.
- ▶ All Japan Turnover = Japannext (J+X+U+N) + TSE (excl. Tostnet) + Chi-X (excl. Chi-Match, Chi-Select). Market Share = Japannext turnover / All Japan Turnover.
- ▶ Price Improvement (PI) and Savings (PI*volume) are calculated by comparing the execution price against the primary market's best bid for each sell or best offer for each buy at the point of execution from the taker's perspective. Reported PI is a value-weighted average. Names with weekly traded value less than 100,000,000 JPY are excluded from the rankings tables.