

Market Report for the Week of February 06, 2017

Daily Averages

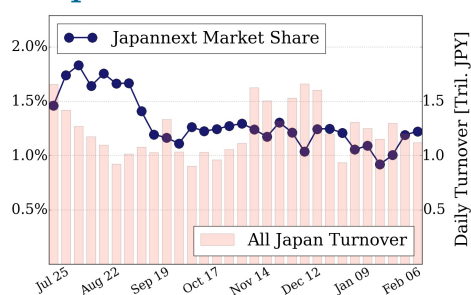
Universe	Value (JPY)	Volume	Share	PI (bps)	Symbols
All Market	87,507,897,899	102,348,325	3.22 %	5.52	2179
Large Cap	13,648,611,622	8,693,100	1.22 %	1.55	100
Mid Cap	50,710,888,406	53,920,560	5.64 %	5.54	401
Small Cap	14,020,807,350	31,670,160	3.72 %	8.17	1209
Mothers & Jasdaq	4,441,255,042	7,240,160	2.98 %	9.63	384
ETFs & REITs	4,686,335,479	824,345	2.63 %	2.65	85

All Market
3.2 %

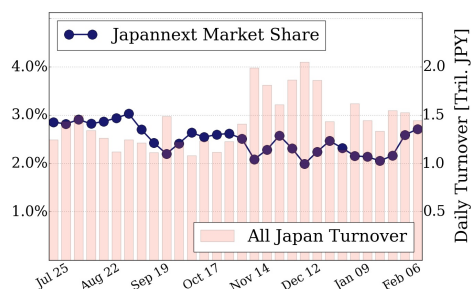
Topix 100
1.2 %

Nikkei 225
2.7 %

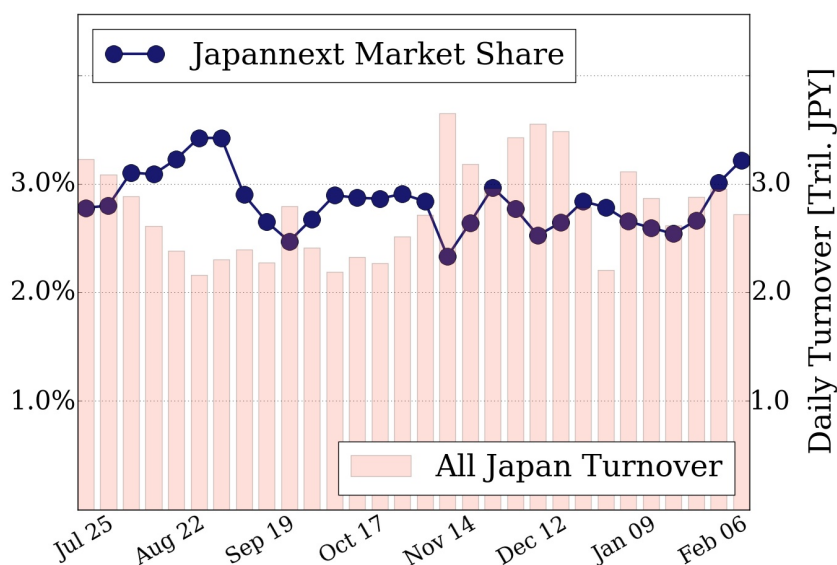
Topix 100



Nikkei 225



All Market



Top Stocks by Turnover

Stock	Value (JPY)	Share	PI (bps)
1570 NIKKEILV	9,073,533,978	2.02%	1.78
6753 SHARP	7,714,787,500	9.08%	9.44
4689 YAHOO J	6,319,972,490	6.68%	6.55
6701 NEC	3,893,730,500	15.70%	13.53
9613 NTTDATA	3,877,023,500	11.60%	6.49

Top Stocks by Market Share

Stock	Value (JPY)	Share	PI (bps)
8840 DAIKYO	535,278,600	17.16%	16.23
4544 MIRACAHD	1,320,029,700	16.97%	6.29
4684 OBIC	879,357,500	16.69%	7.30
5703 NLM HD	911,513,180	16.66%	13.50
6701 NEC	3,893,730,500	15.70%	13.53

Top Stocks by Price Improvement

Stock	Value (JPY)	Share	PI (bps)
8918 LAND	189,151,960	11.41%	208.16
5955 YAMASNA	226,633,310	5.33%	57.77
3103 UNITIKA	414,461,100	4.15%	33.10
3528 PROSPECT	329,808,100	4.88%	30.11
2315 CAICA	101,083,560	6.01%	29.28

Top Stocks by Savings

Stock	Value (JPY)	Share	Savings
6753 SHARP	7,714,787,500	9.08%	4,951,700
6701 NEC	3,893,730,500	15.70%	4,733,800
7003 MTI-E&S	1,595,409,700	14.91%	3,489,100
4208 UBE IND	2,416,606,600	12.33%	3,308,700
9101 NYKLINE	2,520,825,600	12.88%	3,173,800

- ▶ Analysis is based on SBI Japannext and Thomson Reuters data. Large Cap = TPX100, Mid Cap = TPX500 excl. TPX100, Small Cap = Section1 + Section2 excl. TPX500.
- ▶ All Japan Turnover = Japannext (J+X+U+N) + TSE (excl. Tostnet) + Chi-X (excl. Chi-Match, Chi-Select). Market Share = Japannext turnover / All Japan Turnover.
- ▶ Price Improvement (PI) and Savings (PI*volume) are calculated by comparing the execution price against the primary market's best bid for each sell or best offer for each buy at the point of execution from the taker's perspective. Reported PI is a value-weighted average. Names with weekly traded value less than 100,000,000 JPY are excluded from the rankings tables.