

Market Report for the Week of January 30, 2017

Daily Averages

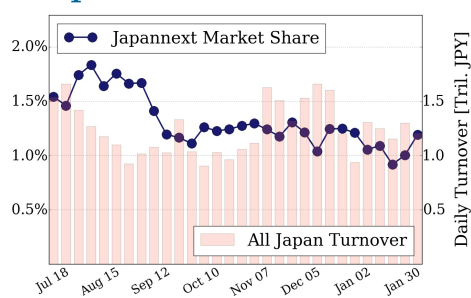
Universe	Value (JPY)	Volume	Share	PI (bps)	Symbols
All Market	88,865,483,769	100,078,453	3.01 %	5.38	2172
Large Cap	14,342,327,720	8,442,140	1.19 %	1.59	100
Mid Cap	50,392,352,316	58,838,120	5.14 %	5.78	401
Small Cap	13,091,427,382	24,953,620	3.37 %	6.57	1203
Mothers & Jasdq	4,059,724,282	6,521,100	2.72 %	9.70	382
ETFs & REITs	6,979,652,069	1,323,473	3.05 %	2.72	86

All Market
3.0 %

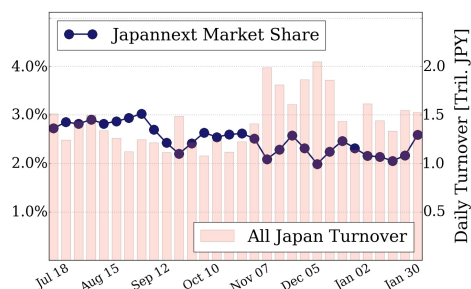
Topix 100
1.2 %

Nikkei 225
2.6 %

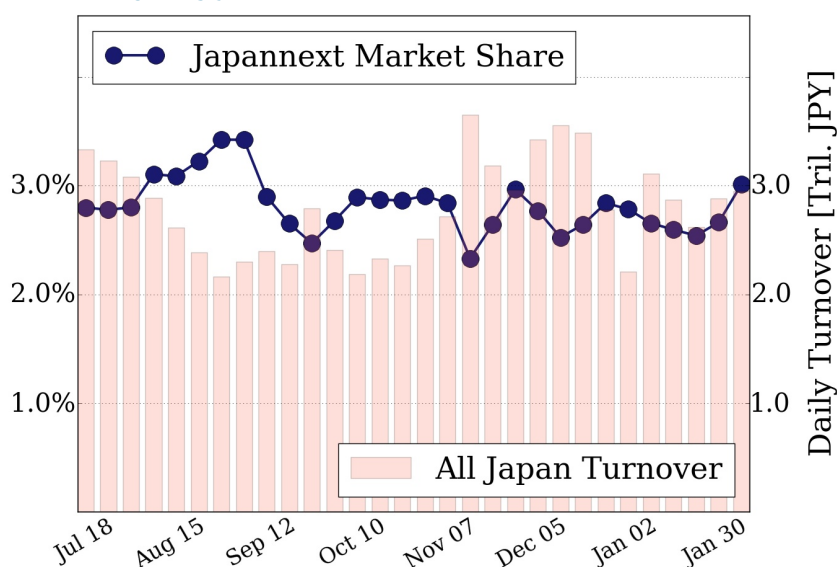
Topix 100



Nikkei 225



All Market



Top Stocks by Turnover

Stock	Value (JPY)	Share	PI (bps)
1570 NIKKEILV	14,188,109,246	2.32%	1.78
6701 NEC	6,244,715,900	9.04%	9.48
7012 KHI	4,938,716,900	15.12%	10.96
9104 MTI-OSK	4,414,524,500	11.15%	11.00
6762 TDK	4,347,690,000	5.31%	4.23

Top Stocks by Market Share

Stock	Value (JPY)	Share	PI (bps)
1459 RK 225DI	1,974,381,385	23.11%	4.18
7003 MTI-E&S	869,450,700	20.05%	22.59
4689 YAHOO J	4,081,514,750	15.77%	8.41
7012 KHI	4,938,716,900	15.12%	10.96
3002 GUNZE	145,308,000	14.45%	7.54

Top Stocks by Price Improvement

Stock	Value (JPY)	Share	PI (bps)
6772 TKOCOSM	407,172,900	7.62%	115.83
3209 KANEYO	164,875,900	3.43%	88.55
3103 UNITIKA	177,338,700	2.83%	42.16
2703 LITE-ON	114,379,200	2.40%	39.04
1821 MS-CON	236,524,530	10.83%	33.09

Top Stocks by Savings

Stock	Value (JPY)	Share	Savings
9101 NYKLINE	4,281,549,400	10.15%	5,121,300
6701 NEC	6,244,715,900	9.04%	5,064,000
7012 KHI	4,938,716,900	15.12%	4,470,000
8303 SHINSEI	2,612,947,400	12.69%	4,059,600
4208 UBE IND	3,114,579,800	13.12%	4,016,200

- ▶ Analysis is based on SBI Japannext and Thomson Reuters data. Large Cap = TPX100, Mid Cap = TPX500 excl. TPX100, Small Cap = Section1 + Section2 excl. TPX500.
- ▶ All Japan Turnover = Japannext (J+X+U+N) + TSE (excl. Tostnet) + Chi-X (excl. Chi-Match, Chi-Select). Market Share = Japannext turnover / All Japan Turnover.
- ▶ Price Improvement (PI) and Savings (PI*volume) are calculated by comparing the execution price against the primary market's best bid for each sell or best offer for each buy at the point of execution from the taker's perspective. Reported PI is a value-weighted average. Names with weekly traded value less than 100,000,000 JPY are excluded from the rankings tables.