

# Market Report for the Week of January 16, 2017

## Daily Averages

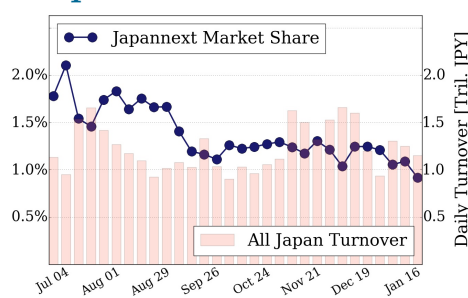
Universe	Value (JPY)	Volume	Share	PI (bps)	Symbols
All Market	66,522,784,622	85,834,330	2.54 %	5.18	2114
Large Cap	10,556,023,900	7,416,600	0.92 %	1.46	100
Mid Cap	34,617,555,946	40,219,000	4.56 %	5.21	401
Small Cap	10,331,299,256	26,833,660	3.27 %	8.44	1161
Mothers & Jasdaq	4,012,768,948	9,810,020	2.73 %	9.07	369
ETFs & REITs	7,005,136,572	1,555,050	2.84 %	2.59	84

All Market  
**2.5 %**

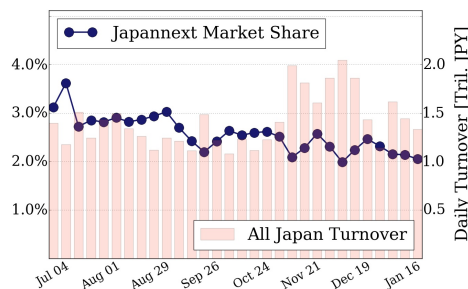
Topix 100  
**0.9 %**

Nikkei 225  
**2.1 %**

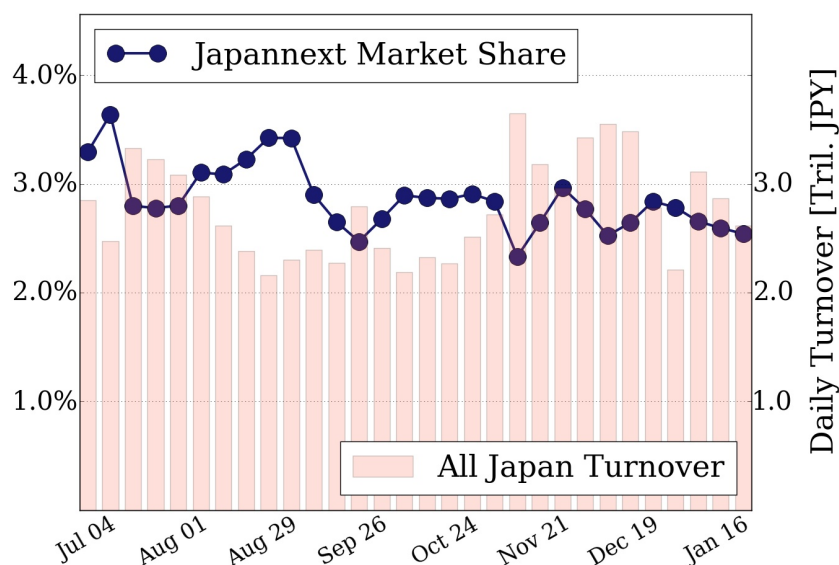
### Topix 100



### Nikkei 225



### All Market



### Top Stocks by Turnover

Stock	Value (JPY)	Share	PI (bps)
1570 NIKKEILV	14,480,249,452	2.17%	1.79
6753 SHARP	5,013,091,600	8.05%	8.71
9101 NYKLINE	3,776,594,400	10.37%	13.90
4689 YAHOO J	3,708,746,920	17.33%	7.54
9104 MTI-OSK	3,582,066,800	8.61%	9.28

### Top Stocks by Market Share

Stock	Value (JPY)	Share	PI (bps)
1459 RK 225DI	1,840,562,706	18.25%	3.91
4689 YAHOO J	3,708,746,920	17.33%	7.54
8107 KIMRTAN	181,006,700	14.35%	1008.95
7003 MTI-E&S	666,456,500	13.73%	24.35
3765 GUNGHO	749,723,620	12.56%	14.45

### Top Stocks by Price Improvement

Stock	Value (JPY)	Share	PI (bps)
8107 KIMRTAN	181,006,700	14.35%	1008.95
7448 JEANS M	117,465,570	4.48%	42.37
3103 UNITIKA	161,944,400	3.11%	41.60
3318 MEGASUP	1,504,995,070	4.08%	39.21
2315 SJI	429,596,780	2.81%	36.19

### Top Stocks by Savings

Stock	Value (JPY)	Share	Savings
9101 NYKLINE	3,776,594,400	10.37%	4,128,000
8107 KIMRTAN	181,006,700	14.35%	4,092,400
8303 SHINSEI	2,037,246,600	11.54%	3,191,600
6753 SHARP	5,013,091,600	8.05%	2,976,500
4208 UBE IND	2,769,787,600	9.82%	2,626,900

- ▶ Analysis is based on SBI Japannext and Thomson Reuters data. Large Cap = TPX100, Mid Cap = TPX500 excl. TPX100, Small Cap = Section1 + Section2 excl. TPX500.
- ▶ All Japan Turnover = Japannext (J+X+U+N) + TSE (excl. Tostnet) + Chi-X (excl. Chi-Match, Chi-Select).  
Market Share = Japannext turnover / All Japan Turnover.
- ▶ Price Improvement (PI) and Savings (PI\*volume) are calculated by comparing the execution price against the primary market's best bid for each sell or best offer for each buy at the point of execution from the taker's perspective. Reported PI is a value-weighted average. Names with weekly traded value less than 100,000,000 JPY are excluded from the rankings tables.