

Market Report for the Week of January 09, 2017

Daily Averages

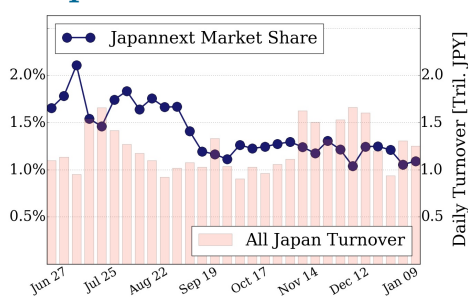
Universe	Value (JPY)	Volume	Share	PI (bps)	Symbols
All Market	74,460,504,671	91,008,285	2.60 %	5.66	2124
Large Cap	13,612,863,090	7,927,525	1.09 %	1.37	100
Mid Cap	38,184,076,515	40,003,850	4.38 %	5.13	400
Small Cap	11,770,168,475	34,333,500	3.16 %	11.69	1168
Mothers & Jasdaq	3,984,845,695	7,374,800	2.77 %	9.96	371
ETFs & REITs	6,908,550,896	1,368,610	2.98 %	3.17	86

All Market
2.6 %

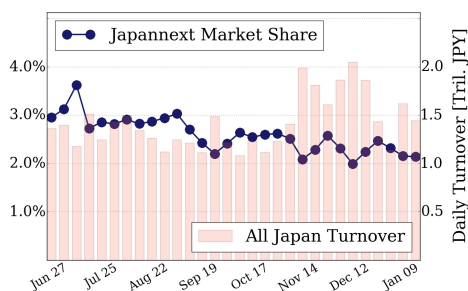
Topix 100
1.1 %

Nikkei 225
2.1 %

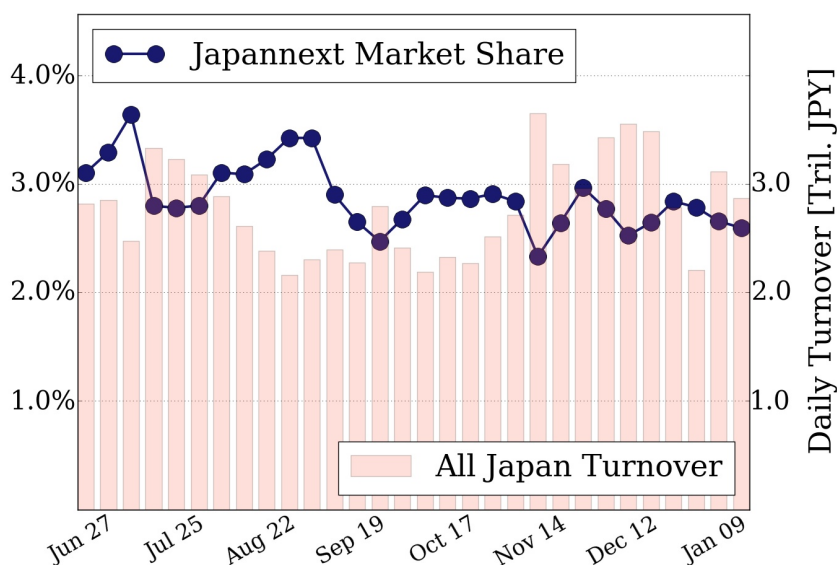
Topix 100



Nikkei 225



All Market



Top Stocks by Turnover

Stock	Value (JPY)	Share	PI (bps)
1570 NIKKEILV	9,751,739,299	1.94%	1.39
6753 SHARP	5,162,949,500	7.29%	8.73
7974 NINTEND	4,191,302,900	1.11%	0.82
4324 DENTSU	3,584,015,700	10.55%	6.39
4689 YAHOO J	2,841,871,480	11.60%	6.99

Top Stocks by Market Share

Stock	Value (JPY)	Share	PI (bps)
8107 KIMRTAN	233,819,300	24.52%	674.49
1366 DW 225DI	746,275,610	23.78%	4.91
1459 RK 225DI	1,120,203,547	20.32%	4.12
8918 LAND	112,298,940	15.40%	195.10
7003 MTI-E&S	456,974,800	13.29%	23.62

Top Stocks by Price Improvement

Stock	Value (JPY)	Share	PI (bps)
8107 KIMRTAN	233,819,300	24.52%	674.49
8918 LAND	112,298,940	15.40%	195.10
3318 MEGASUP	217,331,740	5.01%	60.85
3103 UNITIKA	172,359,600	2.61%	39.64
3528 PROSPECT	489,111,000	6.69%	35.22

Top Stocks by Savings

Stock	Value (JPY)	Share	Savings
8107 KIMRTAN	233,819,300	24.52%	12,256,600
6753 SHARP	5,162,949,500	7.29%	2,563,500
9101 NYKLINE	1,533,620,800	9.76%	1,899,000
7012 KHI	2,708,613,300	12.18%	1,880,300
8303 SHINSEI	1,354,290,600	9.13%	1,693,100

- ▶ Analysis is based on SBI Japannext and Thomson Reuters data. Large Cap = TPX100, Mid Cap = TPX500 excl. TPX100, Small Cap = Section1 + Section2 excl. TPX500.
- ▶ All Japan Turnover = Japannext (J+X+U+N) + TSE (excl. Tostnet) + Chi-X (excl. Chi-Match, Chi-Select).
Market Share = Japannext turnover / All Japan Turnover.
- ▶ Price Improvement (PI) and Savings (PI*volume) are calculated by comparing the execution price against the primary market's best bid for each sell or best offer for each buy at the point of execution from the taker's perspective. Reported PI is a value-weighted average. Names with weekly traded value less than 100,000,000 JPY are excluded from the rankings tables.