

Market Report for the Week of December 12, 2016

Daily Averages

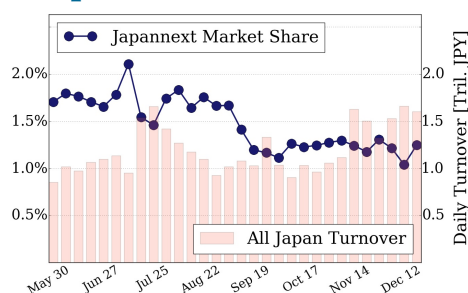
Universe	Value (JPY)	Volume	Share	PI (bps)	Symbols
All Market	92,116,271,437	109,379,438	2.64 %	5.30	2159
Large Cap	19,927,592,624	11,454,460	1.24 %	1.47	100
Mid Cap	47,170,208,956	52,517,700	4.43 %	5.10	400
Small Cap	12,530,688,912	37,287,880	3.30 %	10.80	1209
Mothers & Jasdaq	4,672,509,900	6,780,860	2.92 %	8.18	365
ETFs & REITs	7,815,271,045	1,338,538	2.79 %	3.33	86

All Market
2.6 %

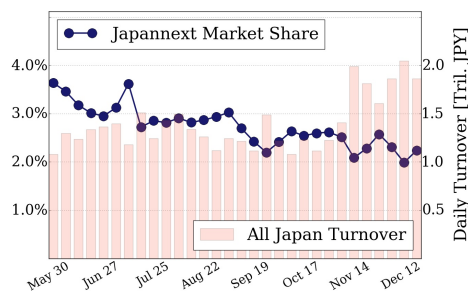
Topix 100
1.2 %

Nikkei 225
2.2 %

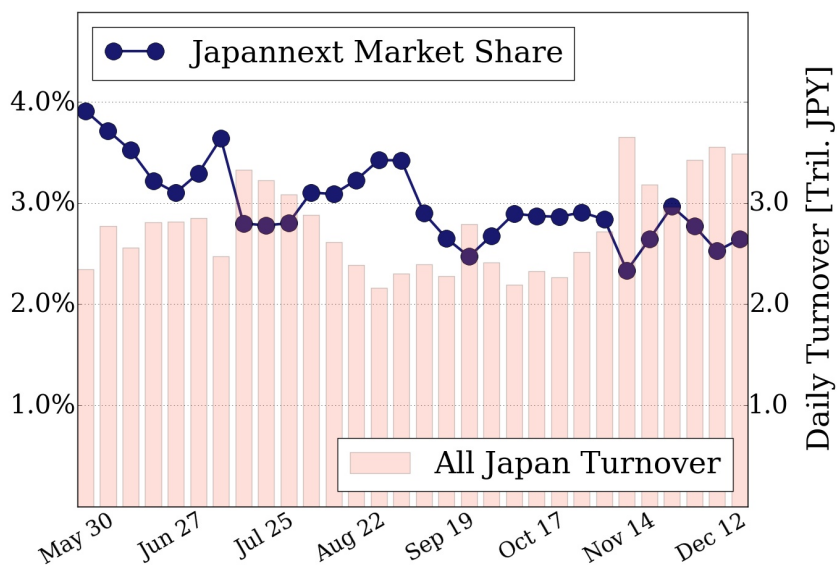
Topix 100



Nikkei 225



All Market



Top Stocks by Turnover

Stock	Value (JPY)	Share	PI (bps)
1570 NIKKEILV	17,542,544,942	2.36%	1.53
7974 NINTEND	6,659,395,400	1.39%	0.95
9501 TEPCOHD	4,997,365,380	3.00%	5.10
6753 SHARP	4,923,796,900	9.72%	11.01
6740 JDI	4,171,031,930	6.00%	8.11

Top Stocks by Market Share

Stock	Value (JPY)	Share	PI (bps)
8107 KIMRTAN	355,780,200	19.29%	865.11
8951 NBF	2,422,682,000	15.73%	7.73
4208 UBE IND	2,016,802,900	14.84%	14.00
5741 UACJ	889,017,200	13.72%	9.93
8952 JRE	1,737,087,300	12.76%	7.10

Top Stocks by Price Improvement

Stock	Value (JPY)	Share	PI (bps)
8107 KIMRTAN	355,780,200	19.29%	865.11
3851 NP-ICHIS	367,608,330	0.87%	68.03
3777 GEONEXT	356,633,100	7.94%	46.20
8704 TRADERS	1,041,695,920	2.79%	42.93
3528 PROSPECT	286,005,100	6.07%	33.17

Top Stocks by Savings

Stock	Value (JPY)	Share	Savings
8107 KIMRTAN	355,780,200	19.29%	15,542,400
9101 NYKLINE	3,823,222,800	8.74%	3,950,600
8303 SHINSEI	3,083,283,900	11.24%	3,926,700
6753 SHARP	4,923,796,900	9.72%	3,321,500
9104 MTI-OSK	3,903,727,000	8.75%	2,929,200

- ▶ Analysis is based on SBI Japannext and Thomson Reuters data. Large Cap = TPX100, Mid Cap = TPX500 excl. TPX100, Small Cap = Section1 + Section2 excl. TPX500.
- ▶ All Japan Turnover = Japannext (J+X+U+N) + TSE (excl. Tostnet) + Chi-X (excl. Chi-Match, Chi-Select). Market Share = Japannext turnover / All Japan Turnover.
- ▶ Price Improvement (PI) and Savings (PI*volume) are calculated by comparing the execution price against the primary market's best bid for each sell or best offer for each buy at the point of execution from the taker's perspective. Reported PI is a value-weighted average. Names with weekly traded value less than 100,000,000 JPY are excluded from the rankings tables.