

Market Report for the Week of October 31, 2016

Daily Averages

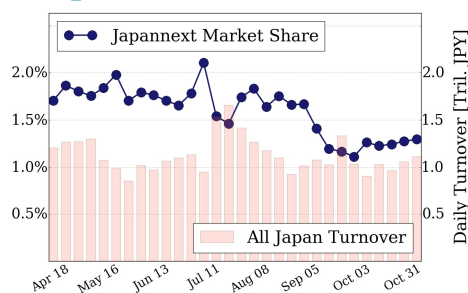
Universe	Value (JPY)	Volume	Share	PI (bps)	Symbols
All Market	77,133,113,068	90,173,423	2.84 %	5.72	1914
Large Cap	14,401,164,085	9,087,000	1.29 %	1.68	100
Mid Cap	44,209,424,227	54,135,375	4.81 %	6.11	399
Small Cap	10,613,147,835	21,981,850	2.95 %	7.76	1043
Mothers & Jasdaq	2,949,933,867	3,837,350	2.75 %	7.13	301
ETFs & REITs	4,959,443,053	1,131,848	2.28 %	3.42	72

All Market
2.8 %

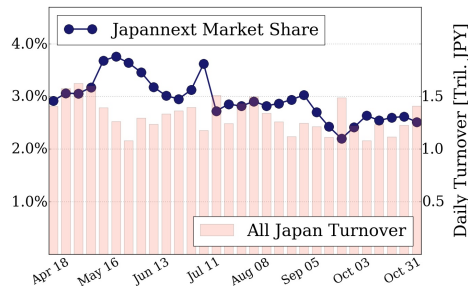
Topix 100
1.3 %

Nikkei 225
2.5 %

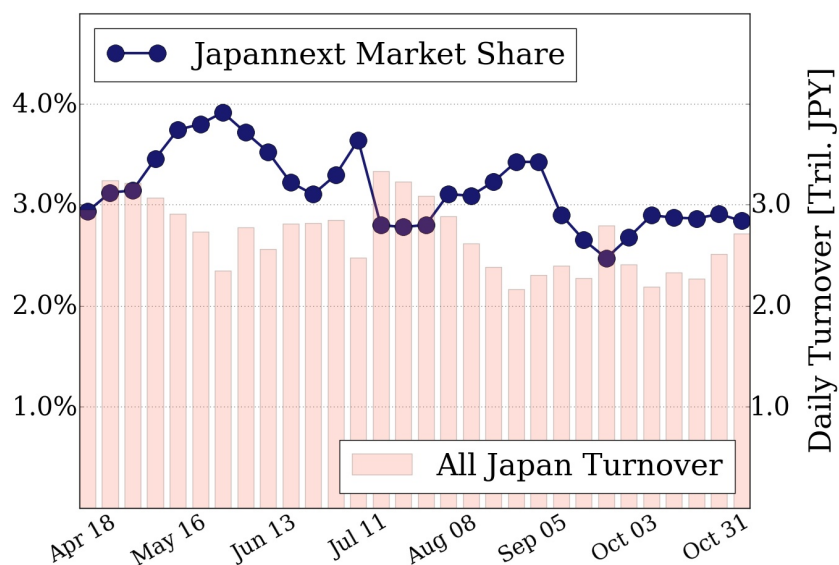
Topix 100



Nikkei 225



All Market



Top Stocks by Turnover

Stock	Value (JPY)	Share	PI (bps)
1570 NIKKEILV	7,569,799,800	1.71%	2.64
4689 YAHOO J	5,082,096,150	10.92%	9.18
4005 SMICHEM	3,052,231,300	9.98%	7.85
9101 NYKLINE	3,020,650,900	6.05%	16.34
4183 MTI-CHM	2,976,390,100	8.43%	6.76

Top Stocks by Market Share

Stock	Value (JPY)	Share	PI (bps)
5706 MTI-M&S	820,035,500	16.29%	16.77
7003 MTI-E&S	796,861,500	15.60%	27.50
2670 ABCMART	1,496,462,900	12.60%	5.33
8304 AOZORA	1,653,948,000	12.59%	11.65
6997 NP-CHCN	170,438,300	12.53%	15.93

Top Stocks by Price Improvement

Stock	Value (JPY)	Share	PI (bps)
3103 UNITIKA	200,194,300	1.67%	56.09
9972 ALTECH	187,699,100	0.96%	43.09
1821 MS-CON	146,606,790	8.49%	40.07
7003 MTI-E&S	796,861,500	15.60%	27.50
6531 REFINVRS	164,495,000	6.68%	24.07

Top Stocks by Savings

Stock	Value (JPY)	Share	Savings
4689 YAHOO J	5,082,096,150	10.92%	4,070,690
9101 NYKLINE	3,020,650,900	6.05%	4,012,000
6753 SHARP	2,423,579,600	9.22%	3,581,100
8303 SHINSEI	1,217,418,900	9.90%	2,371,600
9104 MTI-OSK	2,346,269,600	5.19%	2,328,200

- ▶ Analysis is based on SBI Japannext and Thomson Reuters data. Large Cap = TPX100, Mid Cap = TPX500 excl. TPX100, Small Cap = Section1 + Section2 excl. TPX500.
- ▶ All Japan Turnover = Japannext (J+X+U+N) + TSE (excl. Tostnet) + Chi-X (excl. Chi-Match, Chi-Select).
Market Share = Japannext turnover / All Japan Turnover.
- ▶ Price Improvement (PI) and Savings (PI*volume) are calculated by comparing the execution price against the primary market's best bid for each sell or best offer for each buy at the point of execution from the taker's perspective. Reported PI is a value-weighted average. Names with weekly traded value less than 100,000,000 JPY are excluded from the rankings tables.