

Market Report for the Week of October 17, 2016

Daily Averages

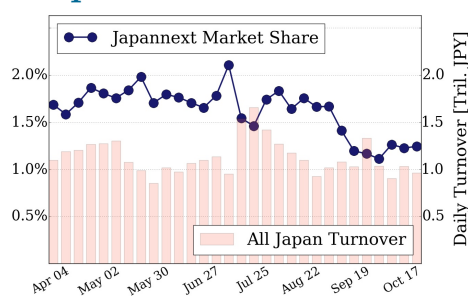
Universe	Value (JPY)	Volume	Share	PI (bps)	Symbols
All Market	64,919,337,897	177,021,843	2.86 %	15.32	1840
Large Cap	11,941,089,262	7,425,020	1.24 %	1.55	100
Mid Cap	37,313,800,072	46,739,260	5.27 %	6.24	399
Small Cap	9,039,564,210	23,949,640	3.16 %	10.27	983
Mothers & Jasdaq	3,096,669,168	98,225,880	2.32 %	543.54	286
ETFs & REITs	3,528,215,185	682,043	1.98 %	3.57	71

All Market
2.9 %

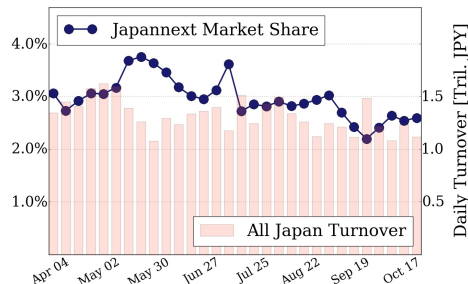
Topix 100
1.2 %

Nikkei 225
2.6 %

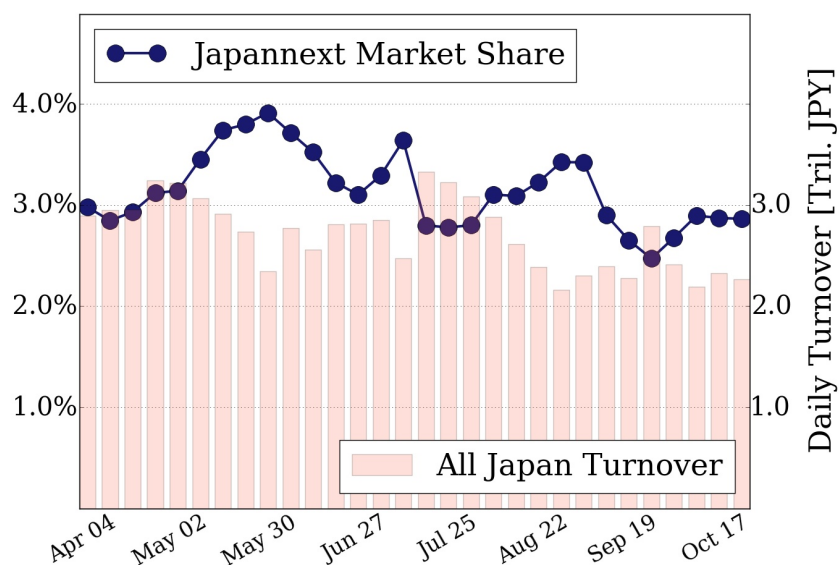
Topix 100



Nikkei 225



All Market



Top Stocks by Turnover

Stock	Value (JPY)	Share	PI (bps)
1570 NIKKEILV	5,203,294,839	1.23%	2.67
7974 NINTEND	5,064,288,700	1.18%	1.13
6098 RECRUIT	3,593,489,550	8.93%	3.88
7211 MMC	3,385,306,640	3.89%	5.06
6762 TDK	3,118,432,700	7.64%	4.40

Top Stocks by Market Share

Stock	Value (JPY)	Share	PI (bps)
9898 SAKHADIA	643,965,770	88.59%	3218.80
1821 MS-CON	244,854,080	20.07%	47.35
7003 MTI-E&S	734,478,400	18.97%	28.81
8585 OR.CORP	925,610,780	16.71%	18.89
7276 KOITO	2,229,372,200	16.17%	7.89

Top Stocks by Price Improvement

Stock	Value (JPY)	Share	PI (bps)
9898 SAKHADIA	643,965,770	88.59%	3218.80
8107 KIMRTAN	148,420,700	9.01%	1193.00
3103 UNITIKA	255,050,200	2.03%	67.00
1821 MS-CON	244,854,080	20.07%	47.35
7003 MTI-E&S	734,478,400	18.97%	28.81

Top Stocks by Savings

Stock	Value (JPY)	Share	Savings
9898 SAKHADIA	643,965,770	88.59%	217,463,990
8107 KIMRTAN	148,420,700	9.01%	6,070,900
8303 SHINSEI	2,652,395,700	14.86%	5,763,600
6753 SHARP	3,080,384,000	9.68%	5,436,300
9101 NYKLINE	2,319,193,900	12.51%	4,085,900

- ▶ Analysis is based on SBI Japannext and Thomson Reuters data. Large Cap = TPX100, Mid Cap = TPX500 excl. TPX100, Small Cap = Section1 + Section2 excl. TPX500.
- ▶ All Japan Turnover = Japannext (J+X+U+N) + TSE (excl. Tostnet) + Chi-X (excl. Chi-Match, Chi-Select). Market Share = Japannext turnover / All Japan Turnover.
- ▶ Price Improvement (PI) and Savings (PI*volume) are calculated by comparing the execution price against the primary market's best bid for each sell or best offer for each buy at the point of execution from the taker's perspective. Reported PI is a value-weighted average. Names with weekly traded value less than 100,000,000 JPY are excluded from the rankings tables.