

Market Report for the Week of October 10, 2016

Daily Averages

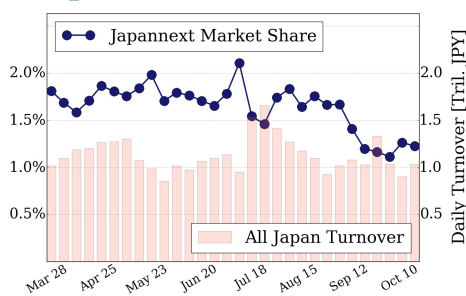
Universe	Value (JPY)	Volume	Share	PI (bps)	Symbols
All Market	66,791,392,787	348,343,098	2.87 %	21.49	1846
Large Cap	12,606,161,327	8,114,400	1.22 %	1.73	100
Mid Cap	37,867,687,385	49,595,475	5.32 %	6.65	400
Small Cap	8,252,555,347	19,884,125	3.05 %	9.16	989
Mothers & Jasdaq	3,459,957,120	269,940,400	2.82 %	475.69	285
ETFs & REITs	4,605,031,607	808,698	2.42 %	4.24	73

All Market
2.9 %

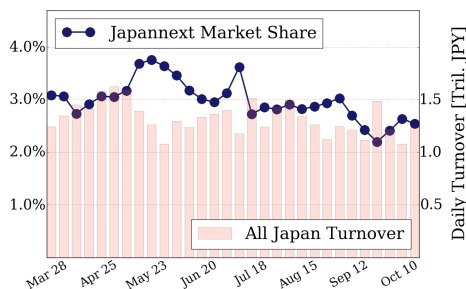
Topix 100
1.2 %

Nikkei 225
2.5 %

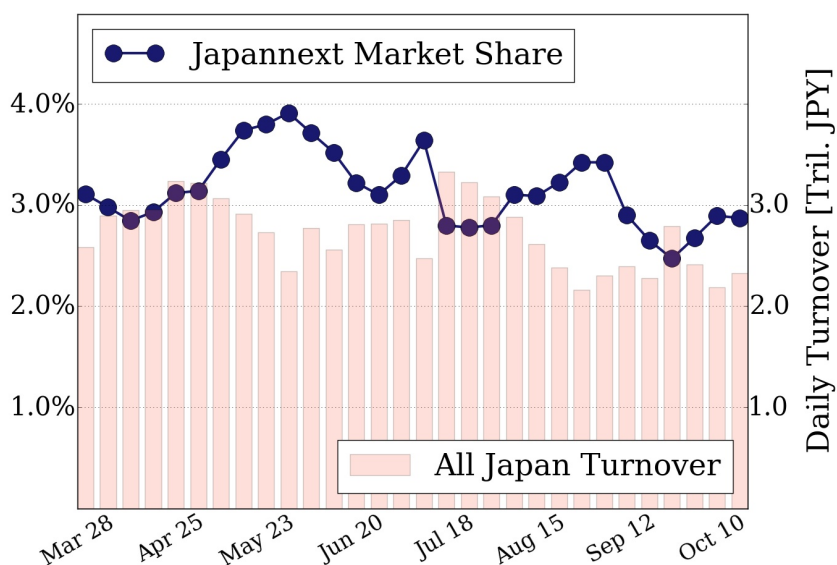
Topix 100



Nikkei 225



All Market



Top Stocks by Turnover

Stock	Value (JPY)	Share	PI (bps)
1570 NIKKEILV	6,495,108,447	1.62%	3.10
9101 NYKLINE	3,311,478,300	9.91%	17.64
6762 TDK	3,290,691,600	7.27%	4.25
7733 OLYMPUS	2,531,511,600	9.45%	4.33
8028 FAMIUNY	2,503,841,100	8.50%	4.96

Top Stocks by Market Share

Stock	Value (JPY)	Share	PI (bps)
9898 SAKHADIA	2,232,394,530	89.44%	1446.13
3765 GUNGHO	822,747,300	17.91%	17.18
8410 SEVEN BK	1,595,710,880	15.70%	12.05
5703 NLM HD	346,582,720	15.67%	17.50
7003 MTI-E&S	801,757,400	15.46%	27.16

Top Stocks by Price Improvement

Stock	Value (JPY)	Share	PI (bps)
9898 SAKHADIA	2,232,394,530	89.44%	1446.13
8107 KIMRTAN	119,858,700	13.31%	647.00
3103 UNITIKA	238,813,400	2.28%	66.85
6255 NPC INC	103,946,690	3.86%	49.29
1821 MS-CON	129,846,990	11.07%	42.87

Top Stocks by Savings

Stock	Value (JPY)	Share	Savings
9898 SAKHADIA	2,232,394,530	89.44%	305,436,740
8303 SHINSEI	2,454,928,400	12.99%	5,022,100
9101 NYKLINE	3,311,478,300	9.91%	4,802,100
8107 KIMRTAN	119,858,700	13.31%	3,181,900
9104 MTI-OSK	2,000,127,900	12.98%	2,733,700

- ▶ Analysis is based on SBI Japannext and Thomson Reuters data. Large Cap = TPX100, Mid Cap = TPX500 excl. TPX100, Small Cap = Section1 + Section2 excl. TPX500.
- ▶ All Japan Turnover = Japannext (J+X+U+N) + TSE (excl. Tostnet) + Chi-X (excl. Chi-Match, Chi-Select). Market Share = Japannext turnover / All Japan Turnover.
- ▶ Price Improvement (PI) and Savings (PI*volume) are calculated by comparing the execution price against the primary market's best bid for each sell or best offer for each buy at the point of execution from the taker's perspective. Reported PI is a value-weighted average. Names with weekly traded value less than 100,000,000 JPY are excluded from the rankings tables.