

# Market Report for the Week of October 03, 2016

## Daily Averages

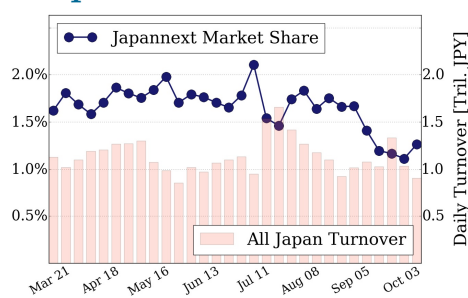
Universe	Value (JPY)	Volume	Share	PI (bps)	Symbols
All Market	63,338,810,373	98,509,007	2.89 %	7.94	1857
Large Cap	11,396,034,638	7,724,840	1.26 %	1.76	100
Mid Cap	35,683,942,710	46,953,440	5.21 %	6.55	399
Small Cap	8,472,174,458	17,426,440	3.10 %	8.67	1001
Mothers & Jasdaq	3,401,274,250	25,534,440	2.38 %	127.13	285
ETFs & REITs	4,385,384,317	869,847	2.39 %	3.79	72

All Market  
**2.9 %**

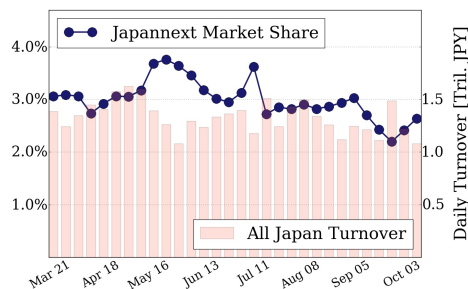
Topix 100  
**1.3 %**

Nikkei 225  
**2.6 %**

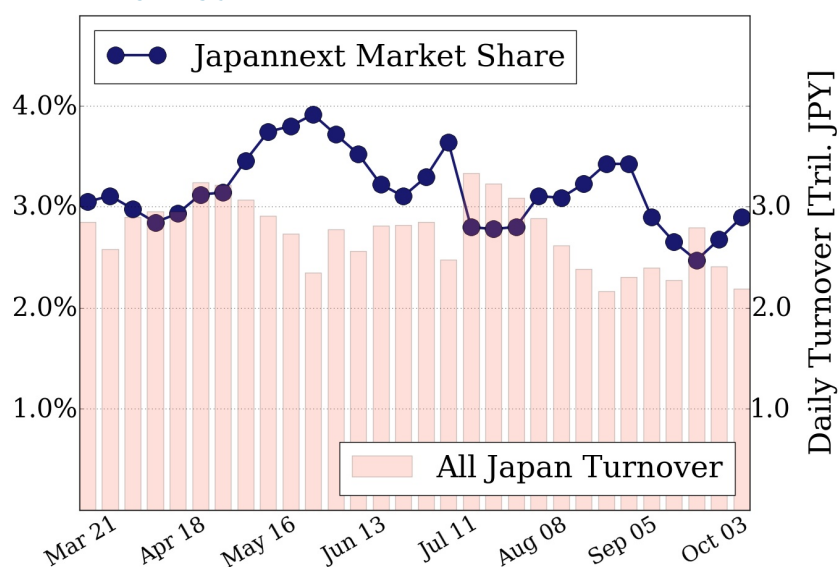
### Topix 100



### Nikkei 225



### All Market



### Top Stocks by Turnover

Stock	Value (JPY)	Share	PI (bps)
1570 NIKKEILV	6,718,335,823	1.59%	3.32
7012 KHI	4,991,495,700	12.18%	14.98
6176 BRANGIST	3,214,544,240	2.74%	4.05
1357 NKDOUBLE	2,975,089,484	3.78%	1.51
9104 MTI-OSK	2,879,712,700	16.65%	15.87

### Top Stocks by Market Share

Stock	Value (JPY)	Share	PI (bps)
9898 SAKHADIA	249,989,850	60.19%	1892.79
3765 GUNGHO	1,171,591,460	19.37%	15.49
9104 MTI-OSK	2,879,712,700	16.65%	15.87
5703 NLM HD	328,346,650	16.30%	17.85
7003 MTI-E&S	633,955,500	15.13%	30.61

### Top Stocks by Price Improvement

Stock	Value (JPY)	Share	PI (bps)
9898 SAKHADIA	249,989,850	60.19%	1892.79
3103 UNITIKA	318,329,500	2.41%	69.36
3071 STREAM	166,363,060	3.31%	52.85
1821 MS-CON	127,191,480	10.58%	51.49
2315 SJI	125,622,450	9.33%	37.51

### Top Stocks by Savings

Stock	Value (JPY)	Share	Savings
9898 SAKHADIA	249,989,850	60.19%	38,425,220
7012 KHI	4,991,495,700	12.18%	6,577,800
9104 MTI-OSK	2,879,712,700	16.65%	4,138,300
9101 NYKLINE	2,606,349,700	10.51%	4,082,100
8303 SHINSEI	1,819,184,900	14.14%	3,702,500

- ▶ Analysis is based on SBI Japannext and Thomson Reuters data. Large Cap = TPX100, Mid Cap = TPX500 excl. TPX100, Small Cap = Section1 + Section2 excl. TPX500.
- ▶ All Japan Turnover = Japannext (J+X+U+N) + TSE (excl. Tostnet) + Chi-X (excl. Chi-Match, Chi-Select).  
Market Share = Japannext turnover / All Japan Turnover.
- ▶ Price Improvement (PI) and Savings (PI\*volume) are calculated by comparing the execution price against the primary market's best bid for each sell or best offer for each buy at the point of execution from the taker's perspective. Reported PI is a value-weighted average. Names with weekly traded value less than 100,000,000 JPY are excluded from the rankings tables.