

Market Report for the Week of August 15, 2016

Daily Averages

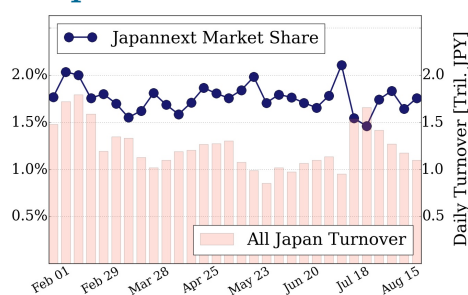
Universe	Value (JPY)	Volume	Share	PI (bps)	Symbols
All Market	76,914,909,175	101,535,950	3.23 %	6.34	1831
Large Cap	19,252,187,592	11,263,740	1.75 %	1.63	100
Mid Cap	40,452,171,362	59,073,580	5.62 %	6.98	400
Small Cap	10,269,130,928	25,540,100	3.81 %	9.69	1002
Mothers & Jasdaq	2,744,473,872	4,877,760	2.63 %	8.75	254
ETFs & REITs	4,196,945,421	780,770	2.18 %	3.00	74

All Market
3.2 %

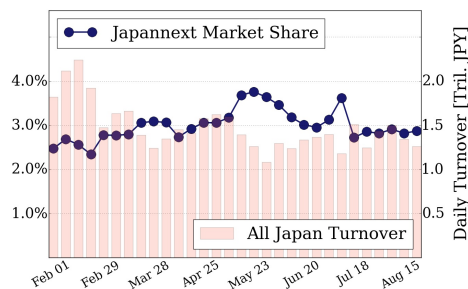
Topix 100
1.8 %

Nikkei 225
2.9 %

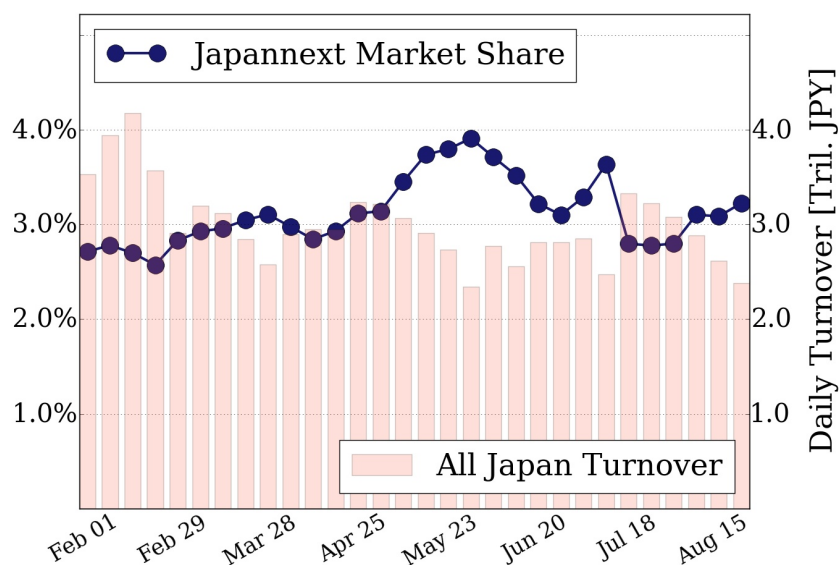
Topix 100



Nikkei 225



All Market



Top Stocks by Turnover

Stock	Value (JPY)	Share	PI (bps)
9984 SOFTBNKG	6,379,157,500	0.88%	1.71
1570 NIKKEILV	6,312,629,108	1.31%	3.10
7974 NINTEND	5,247,517,500	1.40%	1.40
6753 SHARP	5,165,791,000	9.89%	26.95
9983 FASTRET	5,013,729,500	3.92%	2.38

Top Stocks by Market Share

Stock	Value (JPY)	Share	PI (bps)
3765 GUNGHO	997,199,490	25.31%	13.89
1821 MS-CON	356,791,720	18.99%	38.17
6330 TOYOENG	185,469,900	18.05%	9.12
5801 FURKWAE	896,252,200	17.29%	14.28
5406 KOBESTL	2,468,242,900	16.76%	52.01

Top Stocks by Price Improvement

Stock	Value (JPY)	Share	PI (bps)
3103 UNITIKA	261,257,800	4.21%	80.28
5202 NP-SGLS	335,397,100	8.72%	57.52
3777 GEONEXT	267,316,700	10.13%	57.06
5406 KOBESTL	2,468,242,900	16.76%	52.01
5289 HANEDA Z	166,708,890	2.94%	40.11

Top Stocks by Savings

Stock	Value (JPY)	Share	Savings
5406 KOBESTL	2,468,242,900	16.76%	11,820,700
6753 SHARP	5,165,791,000	9.89%	11,142,900
9101 NYKLINE	2,352,659,000	14.07%	4,829,900
8303 SHINSEI	2,214,770,700	16.52%	4,473,700
7013 IHI	2,250,489,200	11.47%	2,609,300

- ▶ Analysis is based on SBI Japannext and Thomson Reuters data. Large Cap = TPX100, Mid Cap = TPX500 excl. TPX100, Small Cap = Section1 + Section2 excl. TPX500.
- ▶ All Japan Turnover = Japannext (J+X+U+N) + TSE (excl. Tostnet) + Chi-X (excl. Chi-Match, Chi-Select). Market Share = Japannext turnover / All Japan Turnover.
- ▶ Price Improvement (PI) and Savings (PI*volume) are calculated by comparing the execution price against the primary market's best bid for each sell or best offer for each buy at the point of execution from the taker's perspective. Reported PI is a value-weighted average. Names with weekly traded value less than 100,000,000 JPY are excluded from the rankings tables.