

Market Report for the Week of May 16, 2016

Daily Averages

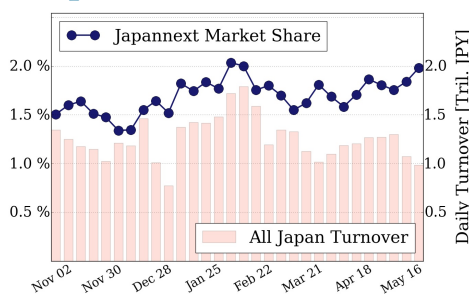
Universe	Value (JPY)	Volume	Share	PI (bps)	Symbols
All Market	103,735,077,961	134,905,286	3.80 %	7.23	1786
Large Cap	19,514,670,394	11,852,020	1.98 %	1.83	100
Mid Cap	61,797,906,502	96,656,560	7.26 %	7.94	403
Small Cap	10,283,706,188	21,272,700	3.23 %	9.13	957
Mothers & Jasdaq	5,759,995,116	4,155,580	1.96 %	11.04	252
ETFs & REITs	6,378,799,761	968,426	2.26 %	4.03	74

All Market
3.8 %

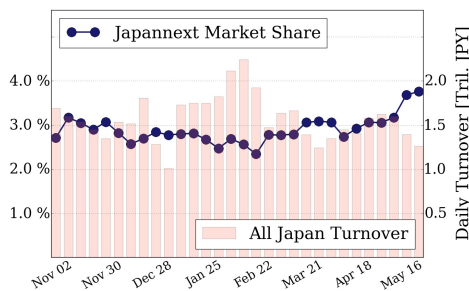
Topix 100
2.0 %

Nikkei 225
3.8 %

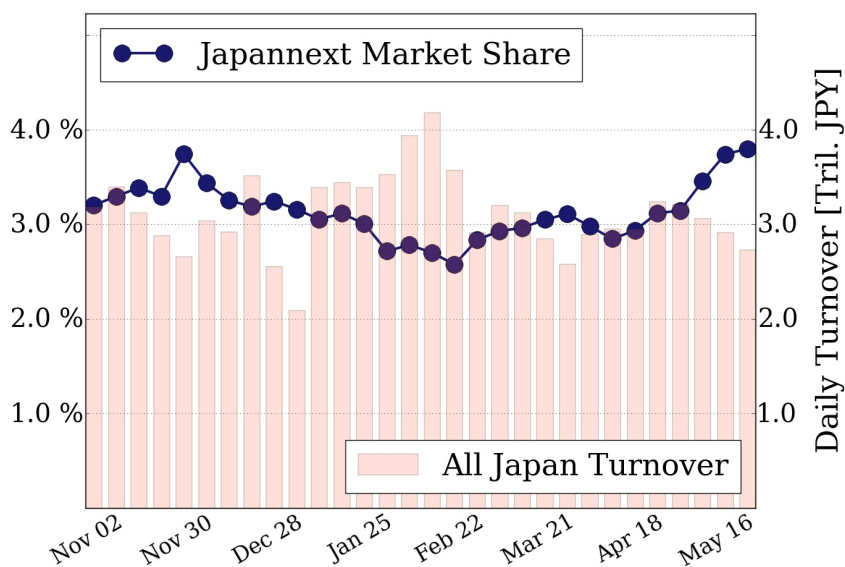
Topix 100



Nikkei 225



All Market



Top Stocks by Turnover

Stock	Value (JPY)	Share	PI (bps)
1570 NIKKEILV	9,788,427,699	1.18%	3.76
4565 SOSEI	8,159,155,900	2.81%	4.66
5406 KOBESTL	8,118,702,900	23.57%	43.54
9983 FASTRET	4,755,573,300	5.26%	1.62
8303 SHINSEI	4,624,899,000	17.28%	23.12

Top Stocks by Market Share

Stock	Value (JPY)	Share	PI (bps)
2212 YAMABAK	2,836,010,700	23.67%	5.04
5406 KOBESTL	8,118,702,900	23.57%	43.54
6755 F-GENRL	1,136,294,400	20.56%	4.85
2801 KIKOMAN	2,767,739,000	20.28%	7.36
4004 SHOWDEN	1,094,085,000	19.50%	37.59

Top Stocks by Price Improvement

Stock	Value (JPY)	Share	PI (bps)
3103 UNITIKA	312,137,600	2.83%	61.73
3264 ASCOT	414,897,170	0.69%	60.54
5406 KOBESTL	8,118,702,900	23.57%	43.54
1821 MS-CON	455,397,620	17.60%	40.98
5202 NP-SGLS	813,662,700	10.98%	40.28

Top Stocks by Savings

Stock	Value (JPY)	Share	Savings
5406 KOBESTL	8,118,702,900	23.57%	31,847,700
8303 SHINSEI	4,624,899,000	17.28%	8,894,800
7013 IHI	4,573,560,200	14.19%	5,515,300
9101 NYKLINE	3,132,441,900	14.78%	4,490,900
5233 PC CEMT	3,511,907,500	17.39%	3,812,600

- ▶ Analysis is based on SBI Japannext and Thomson Reuters data. Large Cap = TPX100, Mid Cap = TPX500 excl. TPX100, Small Cap = Section1 + Section2 excl. TPX500.
- ▶ All Japan Turnover = Japannext (J+X+U+N) + TSE (excl. Tostnet) + Chi-X (excl. Chi-Match, Chi-Select). Market Share = Japannext turnover / All Japan Turnover.
- ▶ Price Improvement (PI) and Savings (PI*volume) are calculated by comparing the execution price against the primary market's best bid for each sell or best offer for each buy at the point of execution from the taker's perspective. Reported PI is a value-weighted average. Names with weekly traded value less than 100,000,000 JPY are excluded from the rankings tables.