

Market Report for the Week of May 09, 2016

Daily Averages

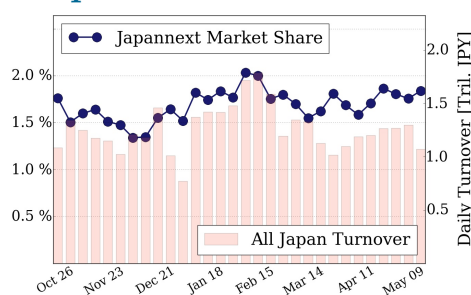
Universe	Value (JPY)	Volume	Share	PI (bps)	Symbols
All Market	108,846,269,652	145,571,421	3.74 %	7.15	1804
Large Cap	19,742,485,468	12,324,580	1.84 %	2.08	100
Mid Cap	65,941,808,004	104,317,760	6.84 %	7.90	402
Small Cap	10,228,249,022	20,565,580	3.05 %	8.61	977
Mothers & Jasdaq	6,409,712,978	7,275,440	2.52 %	11.73	253
ETFs & REITs	6,524,014,180	1,088,061	2.29 %	4.05	72

All Market
3.7 %

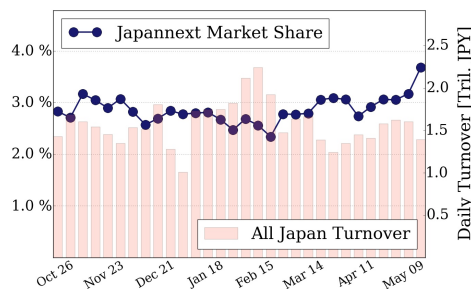
Topix 100
1.8 %

Nikkei 225
3.7 %

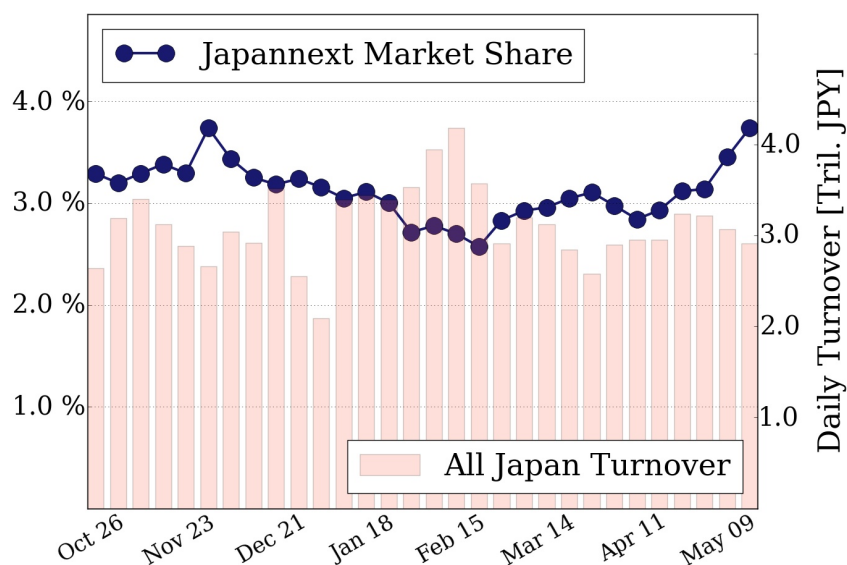
Topix 100



Nikkei 225



All Market



Top Stocks by Turnover

Stock	Value (JPY)	Share	PI (bps)
1570 NIKKEILV	10,092,186,066	1.17%	3.49
4565 SOSEI	8,560,980,100	5.13%	3.17
5406 KOBESTL	7,062,032,700	20.89%	41.43
9983 FASTRET	5,444,798,500	5.66%	2.02
7211 MMC	5,209,366,480	3.98%	6.10

Top Stocks by Market Share

Stock	Value (JPY)	Share	PI (bps)
5406 KOBESTL	7,062,032,700	20.89%	41.43
5233 PC CEMENT	3,747,509,800	20.11%	14.24
5706 MTL-M&S	2,645,613,200	19.45%	20.17
2212 YAMABAK	2,937,701,400	19.31%	4.60
4004 SHOWDEN	1,507,893,800	18.85%	34.36

Top Stocks by Price Improvement

Stock	Value (JPY)	Share	PI (bps)
3264 ASCOT	703,895,730	2.45%	81.66
7638 CIMA	419,773,380	11.20%	71.91
3103 UNITIKA	162,560,600	1.68%	64.35
1821 MS-CON	266,859,840	12.50%	41.81
5406 KOBESTL	7,062,032,700	20.89%	41.43

Top Stocks by Savings

Stock	Value (JPY)	Share	Savings
5406 KOBESTL	7,062,032,700	20.89%	26,501,400
8303 SHINSEI	5,152,629,500	18.26%	10,222,000
7013 IHI	5,049,982,800	10.04%	5,279,700
9101 NYKLINE	3,197,679,100	13.90%	4,976,000
4004 SHOWDEN	1,507,893,800	18.85%	4,610,800

- ▶ Analysis is based on SBI Japannext and Thomson Reuters data. Large Cap = TPX100, Mid Cap = TPX500 excl. TPX100, Small Cap = Section1 + Section2 excl. TPX500.
- ▶ All Japan Turnover = Japannext (J+X+U+N) + TSE (excl. Tostnet) + Chi-X (excl. Chi-Match, Chi-Select). Market Share = Japannext turnover / All Japan Turnover.
- ▶ Price Improvement (PI) and Savings (PI*volume) are calculated by comparing the execution price against the primary market's best bid for each sell or best offer for each buy at the point of execution from the taker's perspective. Reported PI is a value-weighted average. Names with weekly traded value less than 100,000,000 JPY are excluded from the rankings tables.