

Market Report for the Week of May 02, 2016

Daily Averages

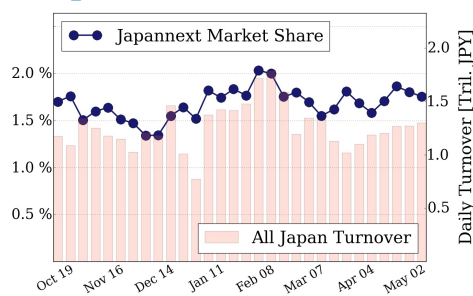
Universe	Value (JPY)	Volume	Share	PI (bps)	Symbols
All Market	105,894,894,483	134,232,692	3.45 %	6.64	1772
Large Cap	22,816,153,950	14,370,650	1.76 %	2.01	100
Mid Cap	60,723,557,675	95,939,450	6.12 %	7.36	403
Small Cap	9,303,242,345	18,379,600	3.12 %	8.61	968
Mothers & Jasdaq	5,015,435,270	4,100,000	2.67 %	10.33	226
ETFs & REITs	8,036,505,243	1,442,992	2.79 %	4.02	74

All Market
3.5 %

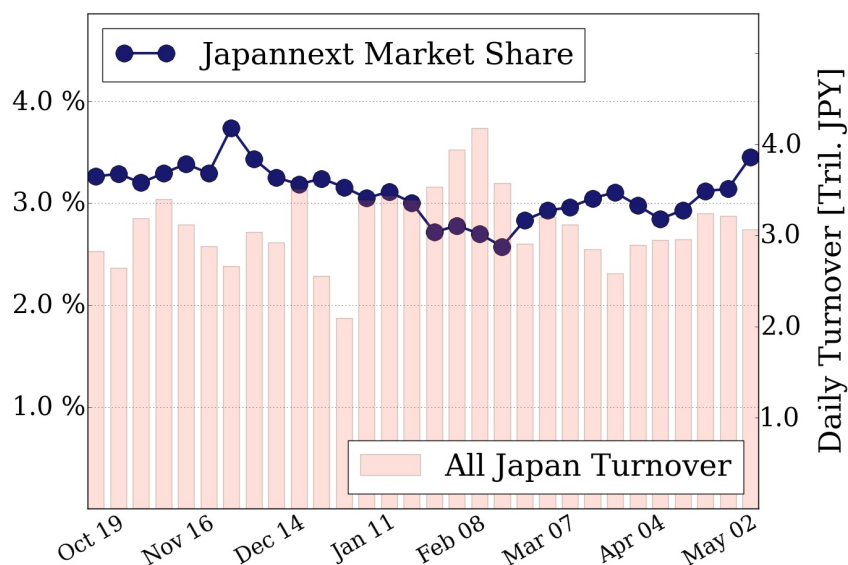
Topix 100
1.8 %

Nikkei 225
3.2 %

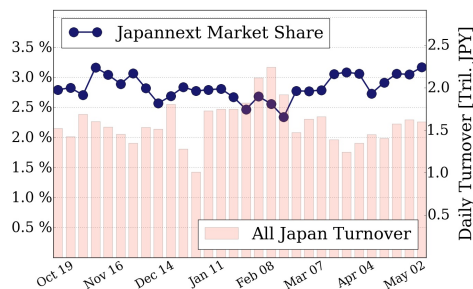
Topix 100



All Market



Nikkei 225



Top Stocks by Turnover

Stock	Value (JPY)	Share	PI (bps)
1570 NIKKEILV	5,963,522,967	1.89%	3.48
4689 YAHOO J	3,006,282,520	15.70%	6.19
9983 FASTRET	2,845,425,600	4.99%	1.44
1357 NKDOUBLE	2,818,911,135	5.20%	4.95
4565 SOSEI	2,524,225,800	5.09%	3.13

Top Stocks by Market Share

Stock	Value (JPY)	Share	PI (bps)
3264 ASCOT	336,572,520	82.63%	nan
6740 JDI	512,571,150	21.86%	16.95
4004 SHOWDEN	507,352,200	18.19%	33.72
5202 NP-SGLS	268,801,300	17.99%	43.88
5406 KOBESTL	2,443,628,800	17.83%	40.55

Top Stocks by Price Improvement

Stock	Value (JPY)	Share	PI (bps)
5202 NP-SGLS	268,801,300	17.99%	43.88
5406 KOBESTL	2,443,628,800	17.83%	40.55
1821 MS-CON	148,230,870	8.82%	40.43
4004 SHOWDEN	507,352,200	18.19%	33.72
8202 LAOX	277,832,800	12.84%	32.86

Top Stocks by Savings

Stock	Value (JPY)	Share	Savings
5406 KOBESTL	2,443,628,800	17.83%	9,096,200
9104 MTI-OSK	1,677,906,900	13.42%	2,323,300
8303 SHINSEI	1,098,131,900	14.49%	2,317,300
9101 NYKLINE	1,380,101,500	14.55%	1,827,000
7013 IHI	1,388,491,600	10.97%	1,616,500

- ▶ Analysis is based on SBI Japannext and Thomson Reuters data. Large Cap = TPX100, Mid Cap = TPX500 excl. TPX100, Small Cap = Section1 + Section2 excl. TPX500.
- ▶ All Japan Turnover = Japannext (J+X+U+N) + TSE (excl. Tostnet) + Chi-X (excl. Chi-Match, Chi-Select). Market Share = Japannext turnover / All Japan Turnover.
- ▶ Price Improvement (PI) and Savings (PI*volume) are calculated by comparing the execution price against the primary market's best bid for each sell or best offer for each buy at the point of execution from the taker's perspective. Reported PI is a value-weighted average. Names with weekly traded value less than 100,000,000 JPY are excluded from the rankings tables.