

Market Report for the Week of April 25, 2016

Daily Averages

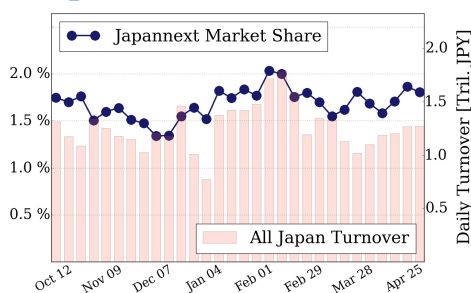
Universe	Value (JPY)	Volume	Share	PI (bps)	Symbols
All Market	101,018,133,655	136,637,557	3.14 %	6.94	1780
Large Cap	22,928,773,465	16,111,500	1.80 %	2.07	100
Mid Cap	55,873,069,145	94,530,275	5.55 %	7.85	403
Small Cap	9,401,504,712	19,750,600	2.81 %	8.48	970
Mothers & Jasdaq	5,095,144,652	4,897,425	2.03 %	11.46	234
ETFs & REITs	7,719,641,680	1,347,757	2.18 %	3.31	74

All Market
3.1 %

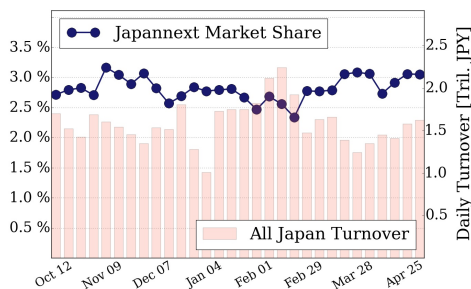
Topix 100
1.8 %

Nikkei 225
3.1 %

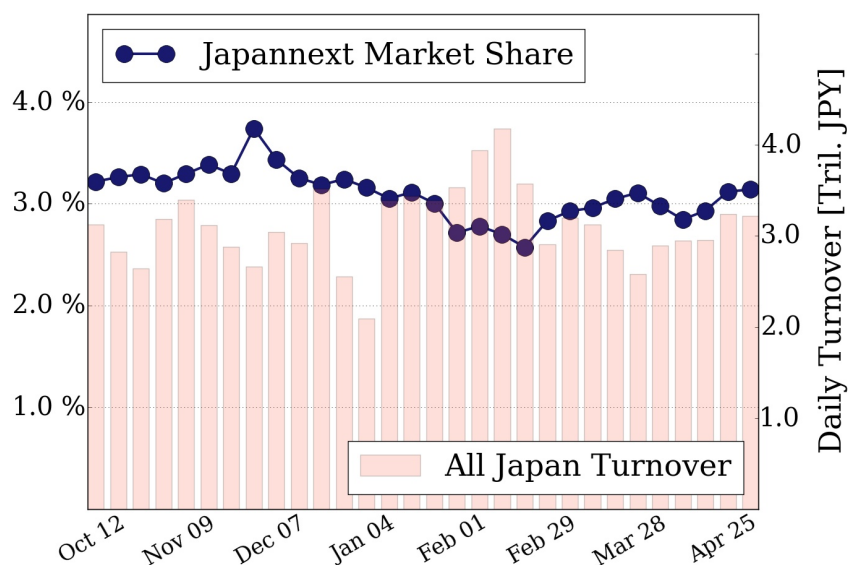
Topix 100



Nikkei 225



All Market



Top Stocks by Turnover

Stock	Value (JPY)	Share	PI (bps)
5406 KOBESTL	9,242,583,600	19.65%	36.05
1570 NIKKEILV	8,379,190,760	1.03%	2.95
4565 SOSEI	5,196,969,800	4.20%	3.70
7211 MMC	5,047,772,820	1.88%	4.63
1357 NKDOUBLE	4,885,097,924	4.02%	2.38

Top Stocks by Market Share

Stock	Value (JPY)	Share	PI (bps)
5406 KOBESTL	9,242,583,600	19.65%	36.05
4004 SHOWDEN	1,145,938,000	19.46%	34.83
5706 MTI-M&S	1,450,110,600	16.50%	18.25
5233 PC CEMENT	2,998,804,900	16.12%	12.15
2678 ASKUL	291,961,000	15.15%	5.69

Top Stocks by Price Improvement

Stock	Value (JPY)	Share	PI (bps)
3103 UNITIKA	149,343,500	2.59%	66.23
1821 MS-CON	596,120,090	13.91%	38.64
5202 NP-SGLS	598,483,000	10.82%	36.98
5406 KOBESTL	9,242,583,600	19.65%	36.05
4004 SHOWDEN	1,145,938,000	19.46%	34.83

Top Stocks by Savings

Stock	Value (JPY)	Share	Savings
5406 KOBESTL	9,242,583,600	19.65%	29,695,000
7013 IHI	3,964,647,300	10.38%	4,261,600
8303 SHINSEI	2,141,023,500	11.27%	3,604,600
4004 SHOWDEN	1,145,938,000	19.46%	3,523,000
9104 MTI-OSK	3,226,934,200	10.88%	3,436,900

- ▶ Analysis is based on SBI Japannext and Thomson Reuters data. Large Cap = TPX100, Mid Cap = TPX500 excl. TPX100, Small Cap = Section1 + Section2 excl. TPX500.
- ▶ All Japan Turnover = Japannext (J+X+U+N) + TSE (excl. Tostnet) + Chi-X (excl. Chi-Match, Chi-Select). Market Share = Japannext turnover / All Japan Turnover.
- ▶ Price Improvement (PI) and Savings (PI*volume) are calculated by comparing the execution price against the primary market's best bid for each sell or best offer for each buy at the point of execution from the taker's perspective. Reported PI is a value-weighted average. Names with weekly traded value less than 100,000,000 JPY are excluded from the rankings tables.