

# Market Report for the Week of April 18, 2016

## Daily Averages

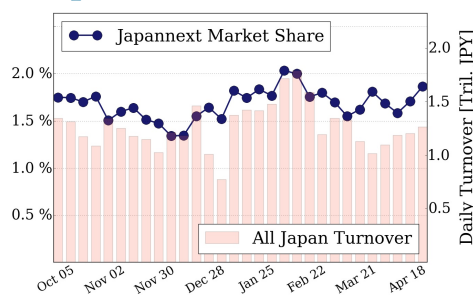
Universe	Value (JPY)	Volume	Share	PI (bps)	Symbols
All Market	101,047,199,964	130,729,864	3.12 %	6.83	1713
Large Cap	23,603,994,912	16,234,680	1.86 %	1.93	100
Mid Cap	52,217,696,070	86,671,540	5.83 %	8.05	403
Small Cap	9,577,766,532	19,710,960	2.82 %	8.47	920
Mothers & Jasdaq	7,196,662,854	6,550,680	2.07 %	9.51	218
ETFs & REITs	8,451,079,596	1,562,004	2.16 %	3.55	72

All Market  
**3.1 %**

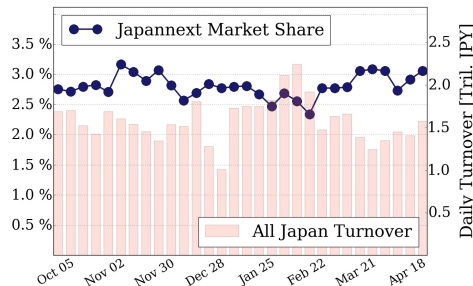
Topix 100  
**1.9 %**

Nikkei 225  
**3.1 %**

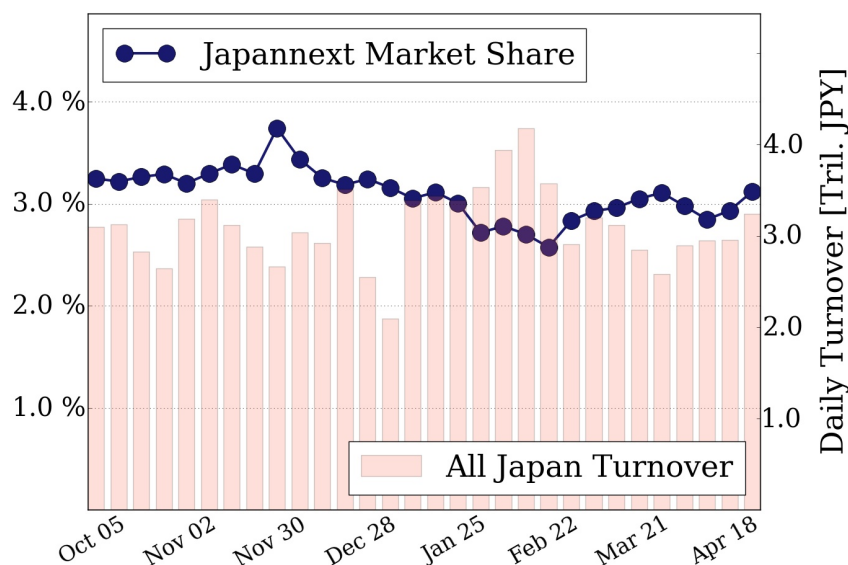
### Topix 100



### Nikkei 225



### All Market



### Top Stocks by Turnover

Stock	Value (JPY)	Share	PI (bps)
1570 NIKKEILV	11,933,977,261	1.07%	3.18
5406 KOBESTL	10,595,680,500	19.50%	38.27
4565 SOSEI	10,484,001,100	2.57%	2.39
1357 NKDOUBLE	7,720,886,725	4.50%	3.61
9983 FASTRET	5,275,407,900	3.02%	1.91

### Top Stocks by Market Share

Stock	Value (JPY)	Share	PI (bps)
4004 SHOWDEN	1,661,367,900	19.80%	35.75
5406 KOBESTL	10,595,680,500	19.50%	38.27
4680 ROUND 1	275,827,150	16.39%	7.20
2212 YAMABAK	1,920,594,200	14.75%	4.24
5233 PC CEMT	3,827,657,200	14.54%	11.64

### Top Stocks by Price Improvement

Stock	Value (JPY)	Share	PI (bps)
3103 UNITIKA	141,876,900	1.79%	73.34
7638 CIMA	162,146,240	10.58%	68.12
6191 EVOLABLE	123,822,460	0.69%	52.35
1821 MS-CON	638,988,450	12.78%	38.79
5406 KOBESTL	10,595,680,500	19.50%	38.27

### Top Stocks by Savings

Stock	Value (JPY)	Share	Savings
5406 KOBESTL	10,595,680,500	19.50%	36,167,900
4004 SHOWDEN	1,661,367,900	19.80%	5,212,100
7013 IHI	3,603,110,300	8.93%	4,096,500
5233 PC CEMT	3,827,657,200	14.54%	3,605,800
8303 SHINSEI	2,178,190,200	10.48%	3,457,900

- ▶ Analysis is based on SBI Japannext and Thomson Reuters data. Large Cap = TPX100, Mid Cap = TPX500 excl. TPX100, Small Cap = Section1 + Section2 excl. TPX500.
- ▶ All Japan Turnover = Japannext (J+X+U+N) + TSE (excl. Tostnet) + Chi-X (excl. Chi-Match, Chi-Select). Market Share = Japannext turnover / All Japan Turnover.
- ▶ Price Improvement (PI) and Savings (PI\*volume) are calculated by comparing the execution price against the primary market's best bid for each sell or best offer for each buy at the point of execution from the taker's perspective. Reported PI is a value-weighted average. Names with weekly traded value less than 100,000,000 JPY are excluded from the rankings tables.