

Market Report for the Week of April 11, 2016

Daily Averages

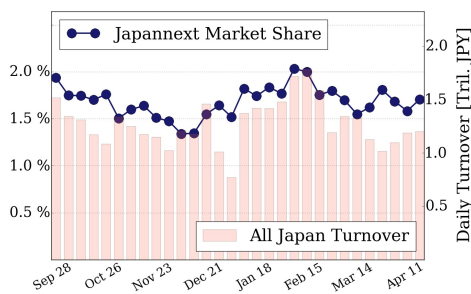
Universe	Value (JPY)	Volume	Share	PI (bps)	Symbols
All Market	86,586,755,152	117,728,747	2.93 %	7.24	1688
Large Cap	20,524,584,660	13,042,440	1.71 %	1.99	100
Mid Cap	45,771,242,448	81,566,900	5.50 %	8.53	403
Small Cap	7,916,323,336	16,230,320	2.61 %	8.30	921
Mothers & Jasdaq	5,028,438,850	5,322,620	1.80 %	9.22	195
ETFs & REITs	7,346,165,858	1,566,467	2.20 %	4.05	70

All Market
2.9 %

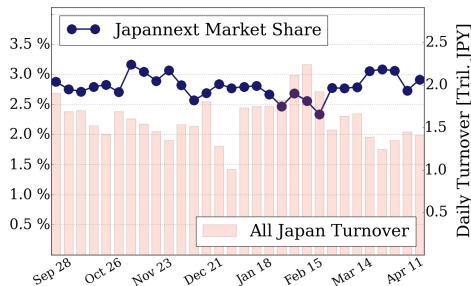
Topix 100
1.7 %

Nikkei 225
2.9 %

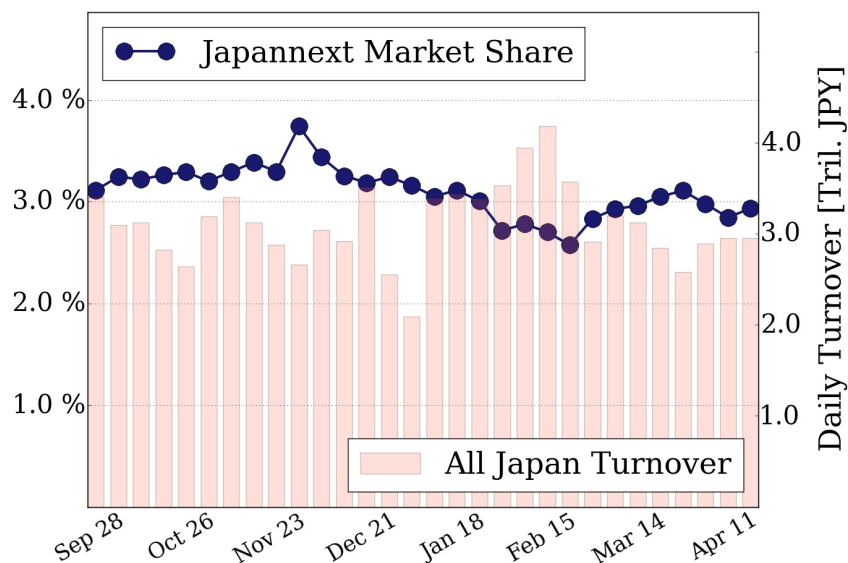
Topix 100



Nikkei 225



All Market



Top Stocks by Turnover

Stock	Value (JPY)	Share	PI (bps)
1570 NIKKEILV	9,641,600,793	0.99%	3.35
5406 KOBESTL	9,144,549,400	19.95%	41.30
1357 NKDOUBLE	7,228,939,756	4.70%	4.87
4565 SOSEI	5,795,148,600	2.68%	2.85
9983 FASTRET	4,856,382,200	2.86%	1.54

Top Stocks by Market Share

Stock	Value (JPY)	Share	PI (bps)
5406 KOBESTL	9,144,549,400	19.95%	41.30
4004 SHOWDEN	1,819,896,400	16.30%	36.96
5233 PC CEMENT	3,470,262,200	15.46%	12.60
8955 JPN-PRI	627,804,600	14.27%	6.67
2580 COCA EJ	444,382,520	14.13%	4.52

Top Stocks by Price Improvement

Stock	Value (JPY)	Share	PI (bps)
7638 CIMA	116,708,290	12.24%	85.99
3103 UNITIKA	148,261,700	2.74%	66.39
2538 JFLA	102,732,100	3.52%	63.27
5202 NP-SGLS	530,779,700	11.25%	46.10
5406 KOBESTL	9,144,549,400	19.95%	41.30

Top Stocks by Savings

Stock	Value (JPY)	Share	Savings
5406 KOBESTL	9,144,549,400	19.95%	34,883,200
4004 SHOWDEN	1,819,896,400	16.30%	5,553,800
8303 SHINSEI	2,667,882,100	11.67%	4,986,700
7013 IHI	3,295,262,300	9.00%	3,751,800
5233 PC CEMENT	3,470,262,200	15.46%	3,422,100

- ▶ Analysis is based on SBI Japannext and Thomson Reuters data. Large Cap = TPX100, Mid Cap = TPX500 excl. TPX100, Small Cap = Section1 + Section2 excl. TPX500.
- ▶ All Japan Turnover = Japannext (J+X+U+N) + TSE (excl. Tostnet) + Chi-X (excl. Chi-Match, Chi-Select). Market Share = Japannext turnover / All Japan Turnover.
- ▶ Price Improvement (PI) and Savings (PI*volume) are calculated by comparing the execution price against the primary market's best bid for each sell or best offer for each buy at the point of execution from the taker's perspective. Reported PI is a value-weighted average. Names with weekly traded value less than 100,000,000 JPY are excluded from the rankings tables.