

# Market Report for the Week of March 28, 2016

## Daily Averages

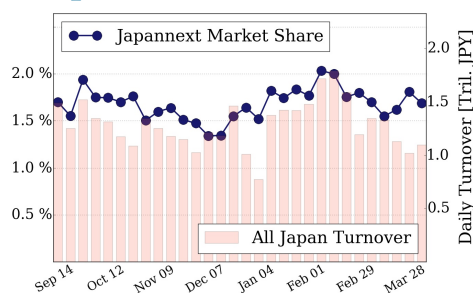
Universe	Value (JPY)	Volume	Share	PI (bps)	Symbols
All Market	86,195,132,868	122,611,970	2.99 %	7.44	1662
Large Cap	18,479,010,868	11,999,860	1.69 %	2.02	99
Mid Cap	47,538,576,636	86,831,660	5.61 %	8.52	403
Small Cap	8,643,299,378	17,984,020	2.55 %	8.79	898
Mothers & Jasdaq	4,291,507,238	4,246,900	1.64 %	6.45	192
ETFs & REITs	7,242,738,748	1,549,530	2.11 %	3.84	70

All Market  
**3.0 %**

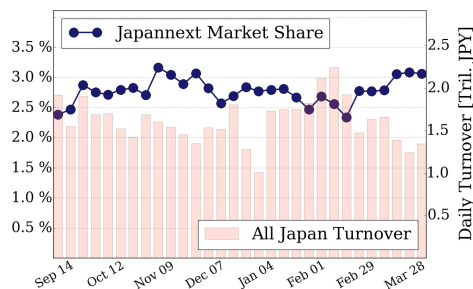
Topix 100  
**1.7 %**

Nikkei 225  
**3.1 %**

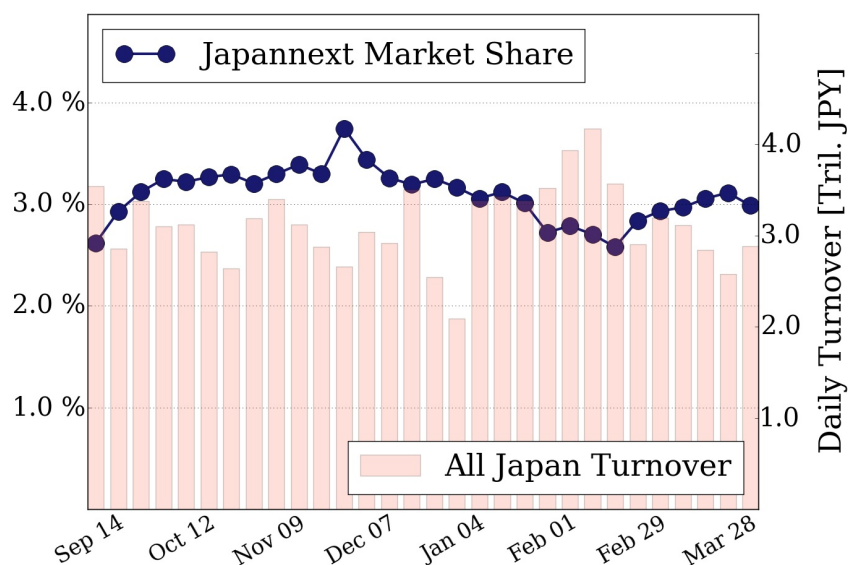
### Topix 100



### Nikkei 225



### All Market



### Top Stocks by Turnover

Stock	Value (JPY)	Share	PI (bps)
1570 NIKKEILV	9,232,604,815	0.96%	2.99
5406 KOBESTL	7,806,365,600	27.27%	44.27
1306 TOPIX F	5,282,727,866	13.53%	3.61
4565 SOSEI	5,215,972,100	3.20%	3.41
1321 225FUND	4,412,328,545	5.66%	2.67

### Top Stocks by Market Share

Stock	Value (JPY)	Share	PI (bps)
5406 KOBESTL	7,806,365,600	27.27%	44.27
5233 PC CEMT	3,697,204,700	22.17%	15.23
4004 SHOWDEN	1,493,577,700	19.20%	36.03
8303 SHINSEI	2,882,240,000	19.04%	25.59
9101 NYKLINE	3,232,084,900	17.40%	17.90

### Top Stocks by Price Improvement

Stock	Value (JPY)	Share	PI (bps)
7744 NORITSU	118,301,050	1.94%	91.27
3103 UNITIKA	164,427,900	3.11%	63.68
5406 KOBESTL	7,806,365,600	27.27%	44.27
1821 MS-CON	388,076,240	10.05%	38.93
5202 NP-SGLS	606,052,600	10.09%	38.86

### Top Stocks by Savings

Stock	Value (JPY)	Share	Savings
5406 KOBESTL	7,806,365,600	27.27%	31,920,700
8303 SHINSEI	2,882,240,000	19.04%	6,029,400
9101 NYKLINE	3,232,084,900	17.40%	4,720,000
5233 PC CEMT	3,697,204,700	22.17%	4,677,100
4004 SHOWDEN	1,493,577,700	19.20%	4,666,300

- ▶ Analysis is based on SBI Japannext and Thomson Reuters data. Large Cap = TPX100, Mid Cap = TPX500 excl. TPX100, Small Cap = Section1 + Section2 excl. TPX500.
- ▶ All Japan Turnover = Japannext (J+X+U+N) + TSE (excl. Tostnet) + Chi-X (excl. Chi-Match, Chi-Select). Market Share = Japannext turnover / All Japan Turnover.
- ▶ Price Improvement (PI) and Savings (PI\*volume) are calculated by comparing the execution price against the primary market's best bid for each sell or best offer for each buy at the point of execution from the taker's perspective. Reported PI is a value-weighted average. Names with weekly traded value less than 100,000,000 JPY are excluded from the rankings tables.