

# Japannext PTS Monthly Statistics

## July 2013

Registration as a Financial Instrument Business Operator under the Financial Instruments and Exchange Act (FIEA) (including authorization to operate a Proprietary Trading System (PTS)),  
Director of Kanto Local Finance Bureau (Kinsho) No.45

TEL: +81-3-4577-4040 FAX:+81-3-3261-1702

MAIL: [ptsbiz@japannext.co.jp](mailto:ptsbiz@japannext.co.jp)

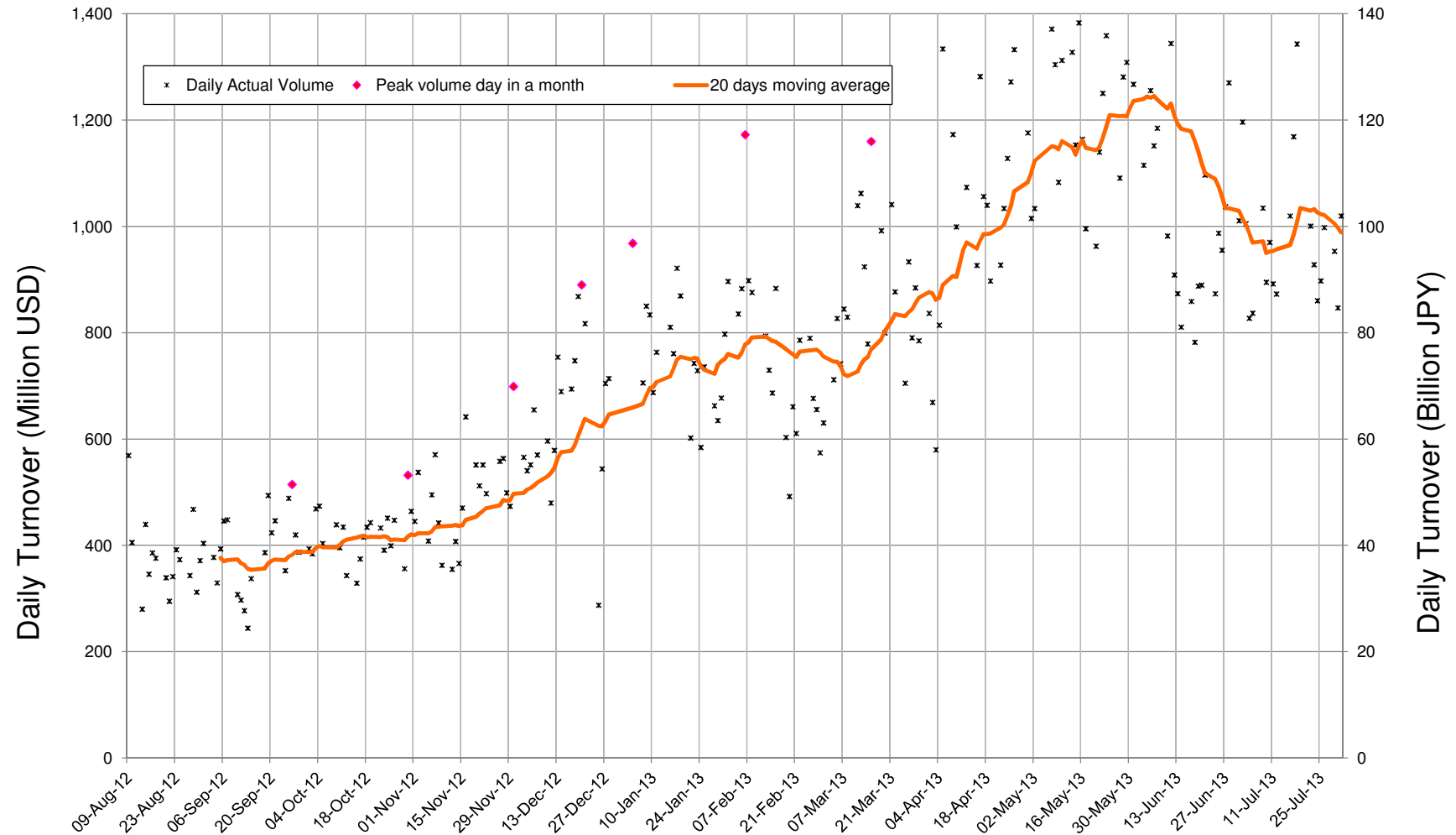
WEB Japanese: <http://www.japannext.co.jp/ja>

English: <http://www.japannext.co.jp/en>

#### Disclaimer

Information provided is for reference purposes only and does not constitute financial product advice nor is constituted as an offer to sell or solicitation to buy any security. The ownership and intellectual property rights of this information are solely and exclusively belong to SBI Japannext Co.,Ltd. ("SBIJ") . According users are permitted to access and use the Information for their own personal, non-commercial and internal-use-only. Although SBIJ has made every effort to ensure the accuracy of the information as at the date of publication, SBIJ does not give any warranty as to the accuracy, reliability or completeness of the information. To the extent permitted by law, SBIJ and its employees, officers and contractors shall not be liable for any loss or damage arising in any way (including by way of negligence) from or in connection with any information provided or omitted or from anyone acting or refraining to act in reliance on this information.

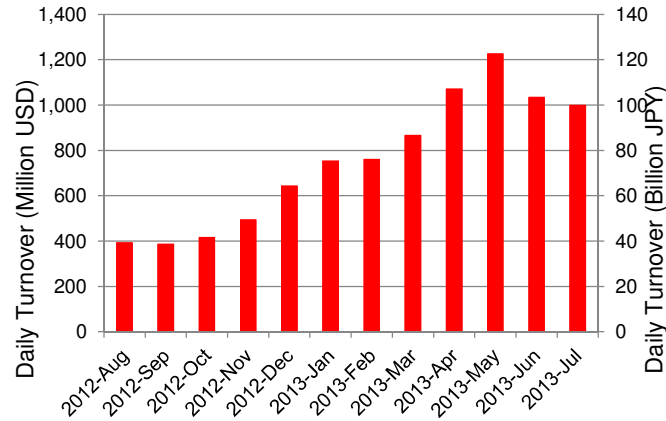
# Daily Turnover of Daytime Session



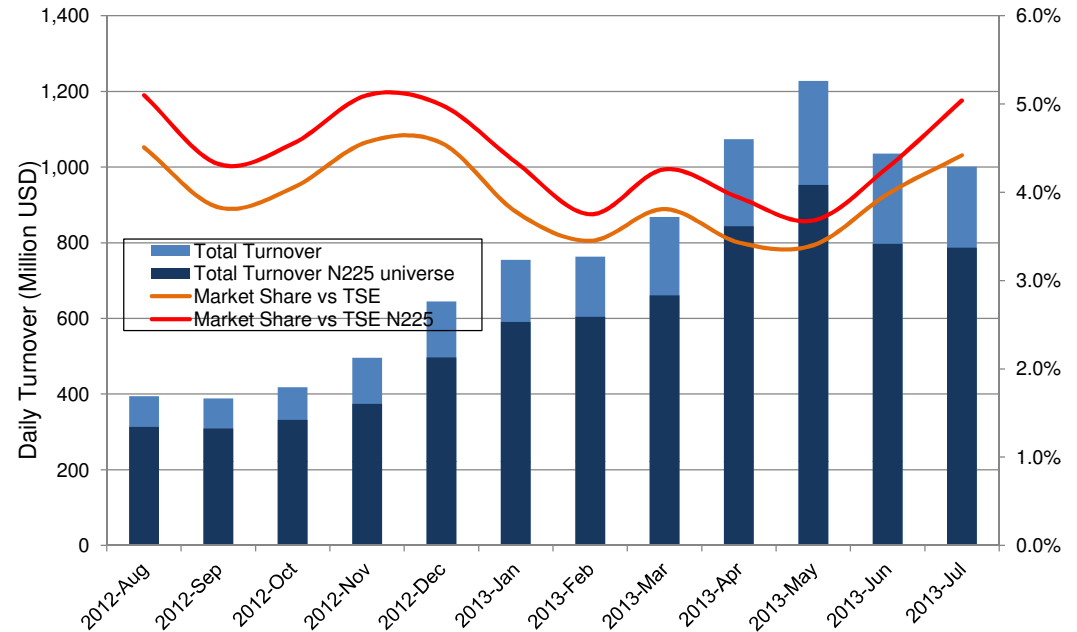
\*1USD=99.77JPY

# Summary of Daytime Session by Month

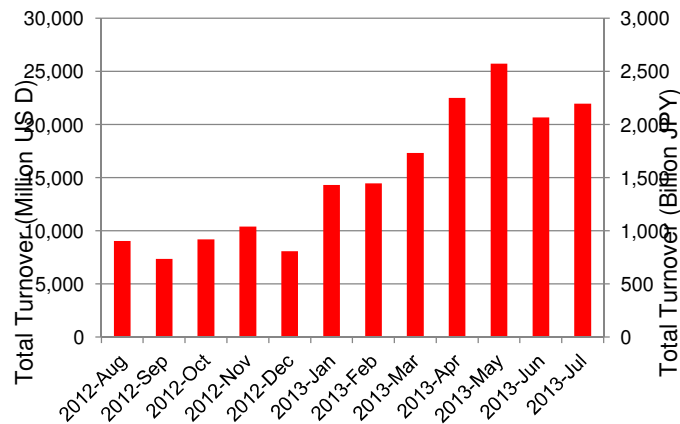
Average Daily Turnover by Month



Market Share vs TSE Turnover



Total Turnover by Month

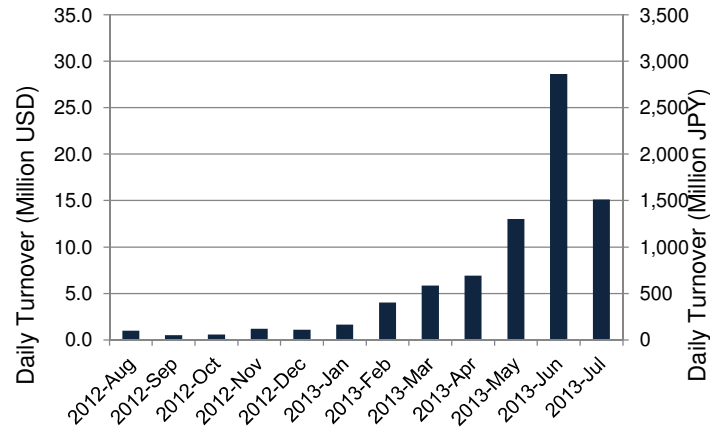


	12-Sep	12-Oct	12-Nov	12-Dec	13-Jan	13-Feb	13-Mar	13-Apr	13-May	13-Jun	13-Jul	
Value	388	418	496	645	755	763	868	1,074	1,228	1,036	1,001	(MM USD)
(N225)	309	332	374	497	591	604	661	844	953	797	787	(MM USD)
Share	3.83%	4.05%	4.57%	4.56%	3.78%	3.45%	3.81%	3.43%	3.40%	3.98%	4.42%	
(N225)	4.32%	4.55%	5.10%	4.99%	4.34%	3.75%	4.26%	3.94%	3.68%	4.28%	5.04%	
Improve	11.53	11.84	11.33	10.31	9.67	9.30	8.13	7.80	7.18	7.38	7.36	(N225 BPS)
TSE Spread	30.32	29.76	28.70	27.01	25.88	25.43	22.32	21.97	21.28	22.78	21.22	(N225 BPS)

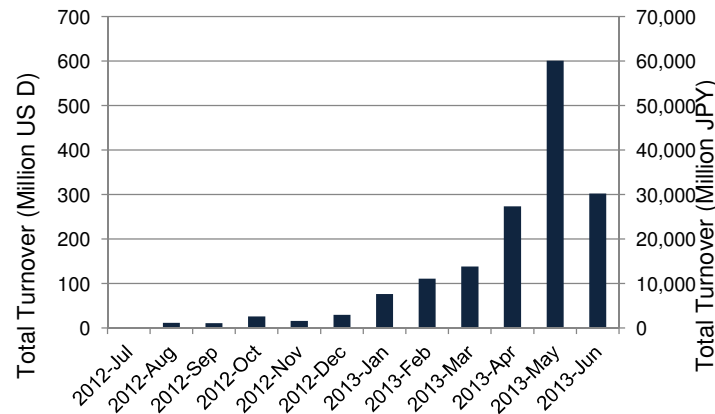
\*1USD=99.77JPY

# Summary of Nighttime Session by Month

**Average Daily Turnover by Month**



**Total Turnover by Month**



**Turnover Top 30 Names in Nighttime Session of Month**

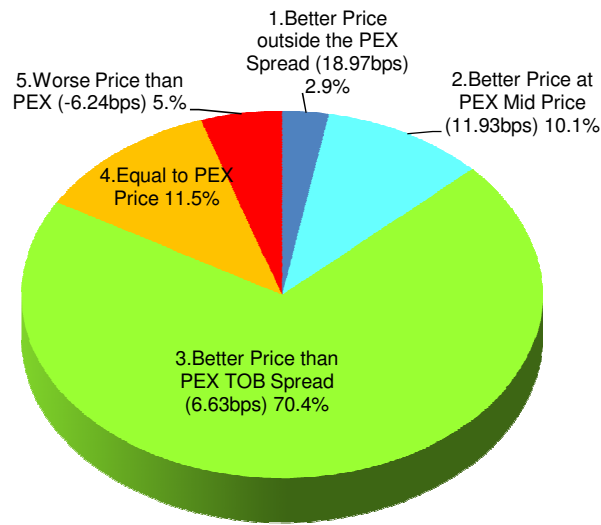
Rank	Symbol	Description	Turnover (USD)	Market Share vs PrimaryEX(%)
1	2497	UNITED	29,604,925	0.63
2	3765	GUNGHO	23,263,249	0.37
3	3656	KLAB	19,087,438	0.52
4	4978	REPROCEL	18,829,689	0.39
5	7203	TOYOTA	16,252,869	0.12
6	2489	ADWAYS	13,347,936	0.71
7	3782	DDS	11,322,465	4.31
8	9501	TEPCO	8,725,201	0.03
9	8411	MIZUHO	7,435,486	0.10
10	3674	AUCFAN	5,698,775	0.33
11	8306	MUFG	5,262,424	0.06
12	9984	SOFTBNK	4,834,506	0.03
13	4321	KENEDIX	3,445,305	0.05
14	6758	SONY	3,265,722	0.06
15	4240	CLUSTER	3,038,318	0.68
16	2587	SUNTRYBF	3,006,265	0.06
17	8473	SBI	2,928,584	0.07
18	8316	SMFG	2,910,204	0.04
19	2160	GNI	2,888,753	0.63
20	7751	CANON	2,814,759	0.06
21	8604	NOMRAHD	2,778,267	0.03
22	3627	NEOS	2,724,989	0.68
23	3668	COLOPL	2,722,866	0.19
24	7261	MAZDA	2,674,715	0.03
25	7267	HONDA	2,577,726	0.06
26	7751	CANON	2,814,759	0.06
27	8604	NOMRAHD	2,778,267	0.03
28	3627	NEOS	2,724,989	0.68
29	3668	COLOPL	2,722,866	0.19
30	7261	MAZDA	2,674,715	0.03

\*1USD=99.77JPY

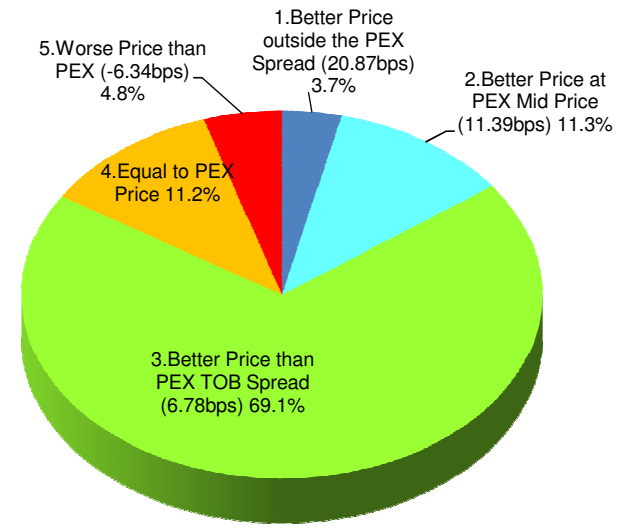
# Daytime Session Execution

## Nikkei 225 universe in July-2013

PEX : Primary Exchange



**BUY Improvement**



**SELL Improvement**

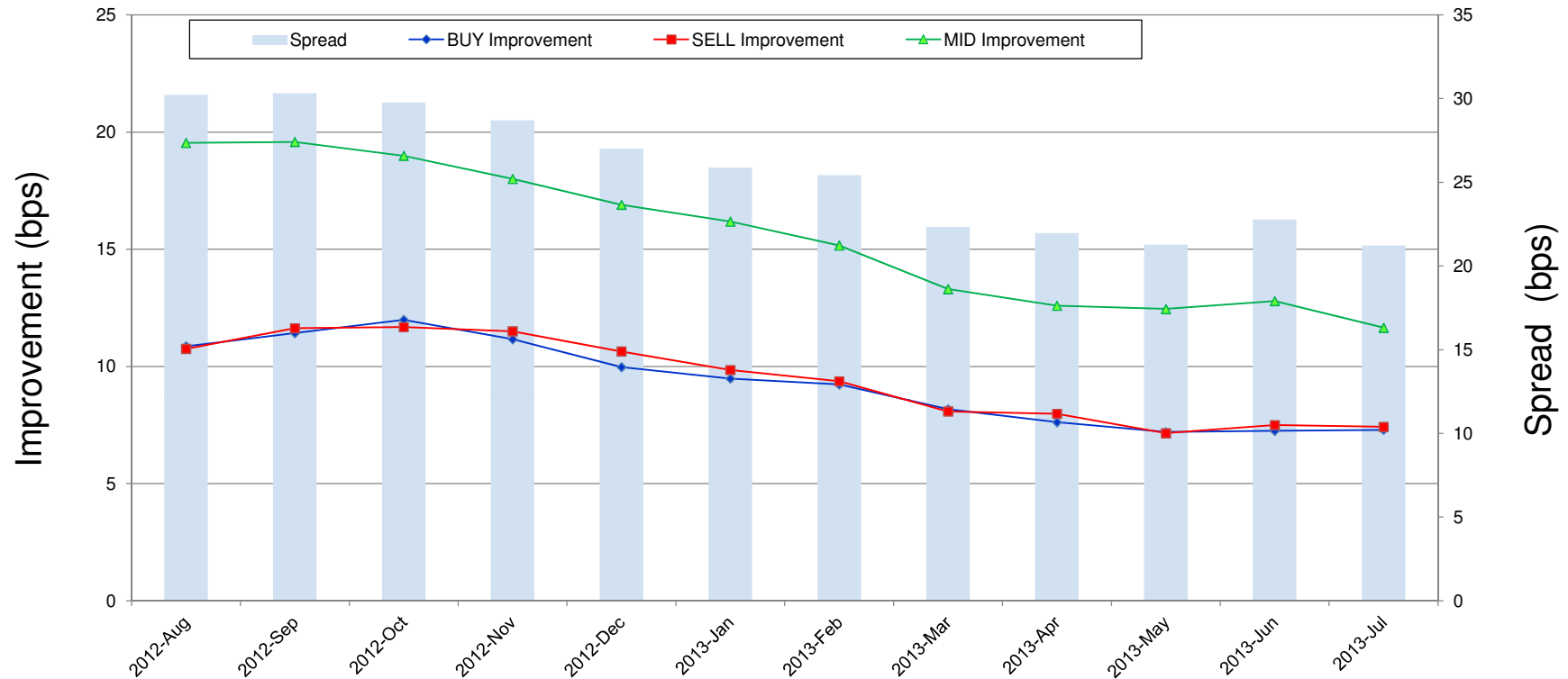
Note1: Excluded the executions from: before 9AM, lunch break, and after 3PM

Note2: Price improvement is calculated by comparing the execution price against the primary market's best bid for each sell or best offer for each buy at the point of execution and is calculated from the perspective of the Taker side of the trade

Note3: The chart% is based on number of trades executed

# Improvement of Execution

## Nikkei 225 universe in July-2013



Note1: Excluded the executions from: before 9AM, lunch break, and after 3PM

Note2: Price improvement is calculated by comparing the execution price against the primary market's best bid for each sell or best offer for each buy at the point of execution and is calculated from the perspective of the Taker side of the trade

## Turnover Top 50 Names in Daytime Session

### Ranking for July-2013

Rank	Symbol	Description	Turnover (Million USD)	Market Share vs PrimaryEX(%)
1	7203	TOYOTA	983.00	7.37
2	9984	SOFTBNK	840.88	4.65
3	8411	MIZUHO	654.16	9.05
4	8306	MUFG	644.03	7.06
5	8316	SMFG	489.76	5.99
6	9983	FASTRET	470.67	7.25
7	7751	CANON	464.36	9.31
8	7267	HONDA	380.36	8.98
9	7261	MAZDA	332.14	4.34
10	6501	HITACHI	309.06	7.36
11	9501	TEPCO	309.02	0.90
12	8830	SMIRE&D	275.09	10.00
13	8309	SMTRUST	256.65	9.45
14	8801	MTI-FU	253.84	8.31
15	6502	TOSHIBA	252.98	7.09
16	2914	JT	250.27	8.61
17	5401	NSTEELSM	233.04	7.42
18	9432	NTT	197.24	5.82
19	9433	KDDI	195.89	6.45
20	7201	NISSAN	186.01	6.52
21	4502	TAKEDAP	176.04	7.37
22	4503	ASTELLAS	174.50	10.71
23	8601	DAIWASG	152.74	4.97
24	6758	SONY	151.27	2.78
25	3382	7&I-HD	150.61	7.35

\*1USD=99.77JPY

Rank	Symbol	Description	Turnover (Million USD)	Market Share vs PrimaryEX(%)
26	8031	mitsui	149.72	5.29
27	7011	MHI	147.97	4.48
28	7270	FUJIHVVY	144.68	2.09
29	7202	ISUZU	142.07	7.40
30	5108	BRIDSTN	138.73	5.47
31	8604	NOMRAHD	137.67	1.65
32	8308	RESONA	133.30	8.39
33	8802	MTB-EST	129.63	2.96
34	8766	TOKIOMAR	128.45	6.57
35	8113	UNICHAM	127.80	12.59
36	4063	SINETUC	126.94	5.83
37	5233	PC CEMT	120.60	6.94
38	5020	JX	120.15	9.29
39	4452	KAO	119.98	6.49
40	7013	IHI	118.90	9.78
41	6902	DENSO	116.57	5.51
42	6367	DAIKINI	116.30	6.45
43	8591	ORIX	108.41	4.06
44	8058	MITBISI	107.70	4.10
45	7211	MMC	107.43	2.70
46	6301	KOMATSU	106.95	3.07
47	7012	KHI	106.07	7.88
48	5406	KOBESTL	104.74	5.68
49	6988	NTTODEN	102.17	6.05
50	6971	KYOCERA	101.52	5.98

## Improvement of Monthly Turnover for Top 25 Names

### Ranking for July-2013

Rank	Symbol	Name	Sell Executions							Improve Avg bps	Buy Executions							Improve Avg bps
			Worse(A)		Equal(B)		Better (C)		(B)+(C)		Worse(A)		Equal(B)		Better (C)		(B)+(C)	
1	7203	TOYOTA	459	1.33%	1,746	5.06%	32,301	93.61%	98.67%	6.32	494	1.51%	2,272	6.95%	29,918	91.54%	98.67%	5.70
2	9984	SOFTBNK	1,893	5.20%	3,876	10.64%	30,649	84.16%	94.80%	5.08	1,321	3.71%	3,547	9.97%	30,705	86.32%	94.80%	5.96
3	8411	MIZUHO	98	0.24%	1,960	4.70%	39,614	95.06%	99.76%	20.14	181	0.37%	2,400	4.89%	46,537	94.75%	99.76%	19.66
4	8306	MUFG	1,104	1.96%	5,160	9.17%	50,030	88.87%	98.04%	5.61	1,174	2.47%	4,555	9.60%	41,737	87.93%	98.04%	6.17
5	8316	SMFG	1,027	4.78%	2,521	11.72%	17,956	83.50%	95.22%	3.06	755	3.63%	2,646	12.73%	17,386	83.64%	95.22%	3.82
6	9983	FASTRET	571	9.53%	686	11.44%	4,737	79.03%	90.47%	3.73	562	9.02%	696	11.17%	4,975	79.82%	90.47%	4.69
7	7751	CANON	479	1.69%	1,676	5.91%	26,207	92.40%	98.31%	5.23	635	2.02%	1,742	5.54%	29,076	92.44%	98.31%	5.64
8	7267	HONDA	775	3.31%	2,162	9.24%	20,451	87.44%	96.69%	4.23	812	3.48%	2,129	9.12%	20,394	87.40%	96.69%	5.03
9	7261	MAZDA	559	3.07%	1,443	7.93%	16,202	89.00%	96.93%	8.64	564	3.14%	1,594	8.88%	15,790	87.98%	96.93%	9.04
10	6501	HITACHI	723	4.27%	1,821	10.75%	14,399	84.98%	95.73%	4.85	738	4.59%	1,850	11.51%	13,481	83.89%	95.73%	5.46
11	9501	TEPCO	1,366	3.12%	4,952	11.29%	37,531	85.59%	96.88%	4.32	1,127	2.52%	4,337	9.68%	39,318	87.80%	96.88%	4.65
12	8830	SMIRE&D	217	7.01%	423	13.66%	2,456	79.33%	92.99%	3.35	339	10.43%	391	12.03%	2,520	77.54%	92.99%	4.13
13	8309	SMTRUST	658	4.28%	1,972	12.84%	12,727	82.87%	95.72%	6.49	838	5.48%	1,743	11.40%	12,709	83.12%	95.72%	7.82
14	8801	MTI-FU	202	5.19%	491	12.61%	3,201	82.20%	94.81%	3.29	239	6.10%	549	14.01%	3,131	79.89%	94.81%	3.97
15	6502	TOSHIBA	548	3.66%	1,616	10.80%	12,795	85.53%	96.34%	6.89	355	2.42%	1,446	9.84%	12,893	87.74%	96.34%	8.18
16	2914	JT	571	2.88%	1,458	7.37%	17,765	89.75%	97.12%	4.78	707	3.85%	1,701	9.27%	15,936	86.87%	97.12%	4.65
17	5401	NSTEELSM	229	1.41%	1,235	7.62%	14,750	90.97%	98.59%	13.26	342	2.03%	1,627	9.66%	14,865	88.30%	98.59%	13.08
18	9432	NTT	550	4.88%	1,171	10.38%	9,557	84.74%	95.12%	5.32	492	4.28%	1,305	11.34%	9,708	84.38%	95.12%	6.24
19	9433	KDDI	545	4.96%	1,610	14.64%	8,843	80.41%	95.04%	4.34	535	5.18%	1,468	14.20%	8,332	80.62%	95.04%	5.22
20	7201	NISSAN	1,101	3.96%	4,530	16.29%	22,177	79.75%	96.04%	2.81	1,587	5.93%	4,182	15.62%	21,008	78.46%	96.04%	3.17
21	4502	TAKEDAP	761	7.03%	1,096	10.13%	8,966	82.84%	92.97%	3.38	630	5.76%	995	9.10%	9,308	85.14%	92.97%	4.08
22	4503	ASTELLAS	534	4.95%	935	8.67%	9,317	86.38%	95.05%	6.11	421	3.94%	968	9.07%	9,284	86.99%	95.05%	6.54
23	8601	DAIWASG	580	7.98%	1,254	17.24%	5,438	74.78%	92.02%	3.09	499	6.75%	1,153	15.59%	5,743	77.66%	92.02%	4.12
24	6758	SONY	1,170	8.18%	2,331	16.29%	10,810	75.54%	91.82%	1.62	1,224	8.39%	2,548	17.47%	10,815	74.14%	91.82%	1.99
25	3382	7&I-HD	678	6.48%	1,138	10.88%	8,640	82.63%	93.52%	3.68	633	5.54%	1,109	9.70%	9,686	84.76%	93.52%	4.40

Note1: Excluded the executions from: before 9AM, lunch break, and after 3PM

Note2: Price improvement is calculated by comparing the execution price against the primary market's best bid for each sell or best offer for each buy at the point of execution and is calculated from the perspective of the Taker side of the trade