

Japannext PTS Monthly Statistics

June 2013

Registration as a Financial Instrument Business Operator under the Financial Instruments and Exchange Act (FIEA) (including authorization to operate a Proprietary Trading System (PTS)),
Director of Kanto Local Finance Bureau (Kinsho) No.45

TEL: +81-3-4577-4040 FAX:+81-3-3261-1702

WEB Japanese: <http://www.japannext.co.jp/ja>

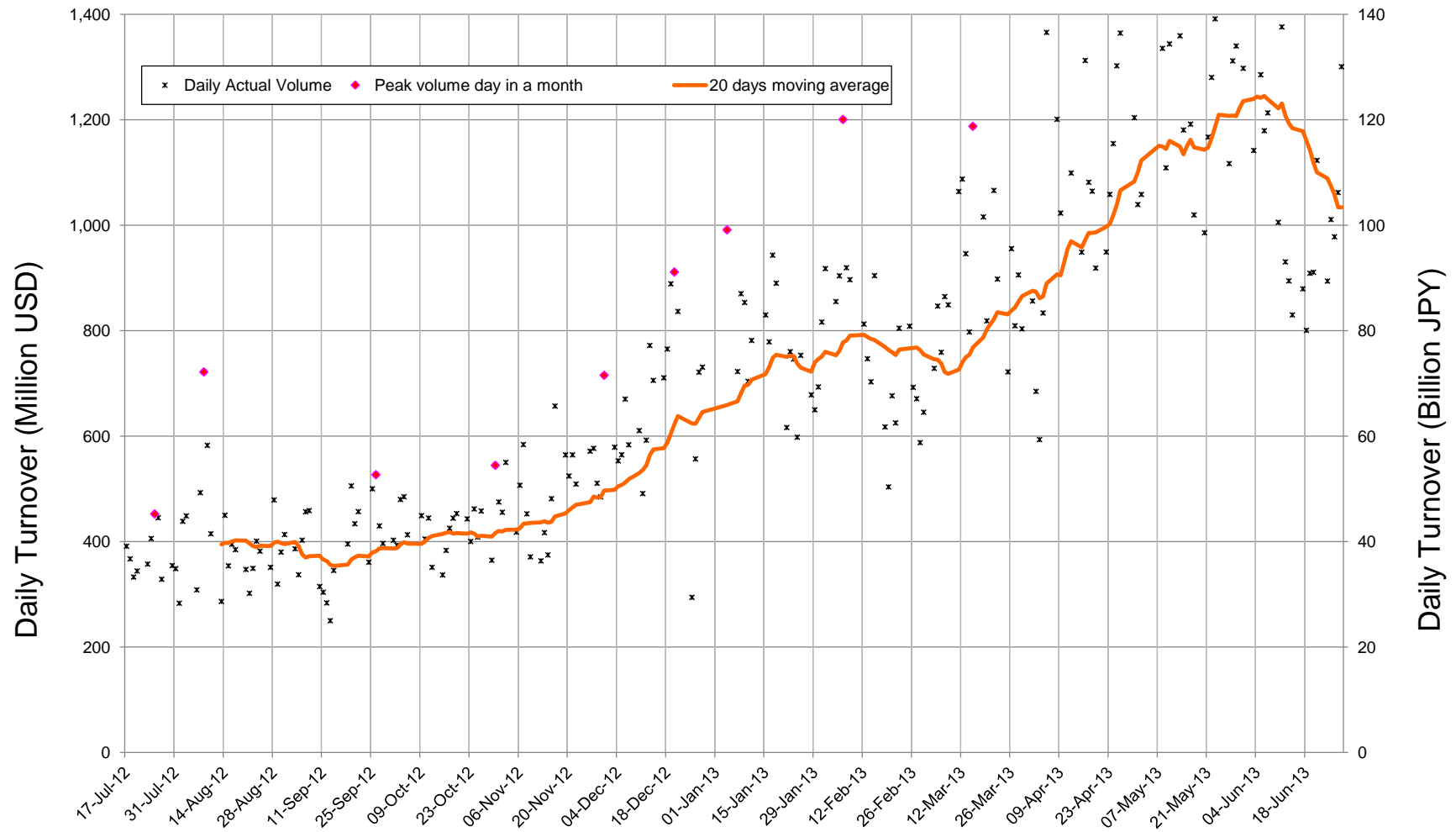
MAIL: ptsbiz@japannext.co.jp

English: <http://www.japannext.co.jp/en>

Disclaimer

Information provided is for reference purposes only and does not constitute financial product advice nor is constituted as an offer to sell or solicitation to buy any security. The ownership and intellectual property rights of this information are solely and exclusively belong to SBI Japannext Co.,Ltd.("SBIJ") . According users are permitted to access and use the Information for their own personal, non-commercial and internal-use-only. Although SBIJ has made every effort to ensure the accuracy of the information as at the date of publication, SBIJ does not give any warranty as to the accuracy, reliability or completeness of the information. To the extent permitted by law, SBIJ and its employees, officers and contractors shall not be liable for any loss or damage arising in any way (including by way of negligence) from or in connection with any information provided or omitted or from anyone acting or refraining to act in reliance on this information.

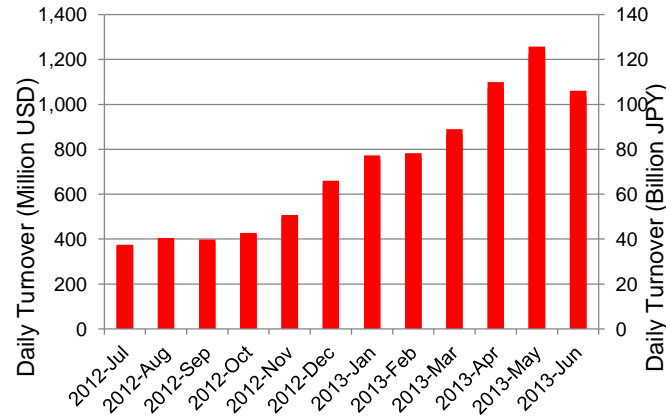
Daily Turnover of Daytime Session



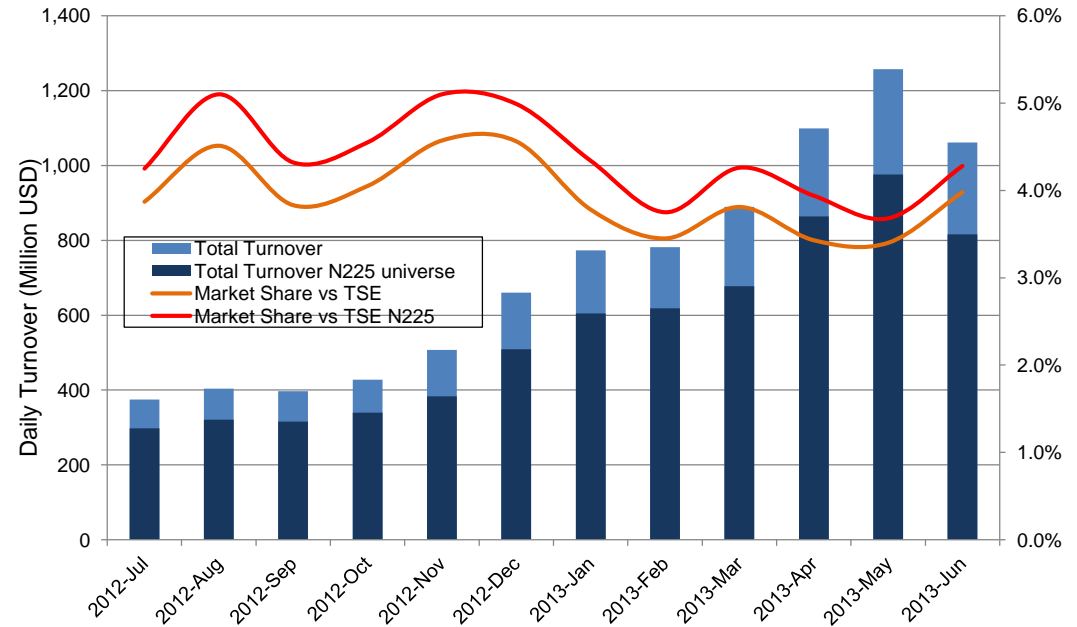
*1USD=97.44JPY

Summary of Daytime Session by Month

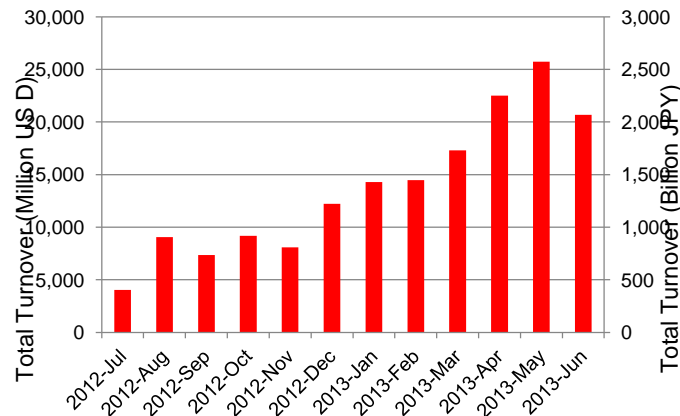
Average Daily Turnover by Month



Market Share vs TSE Turnover



Total Turnover by Month

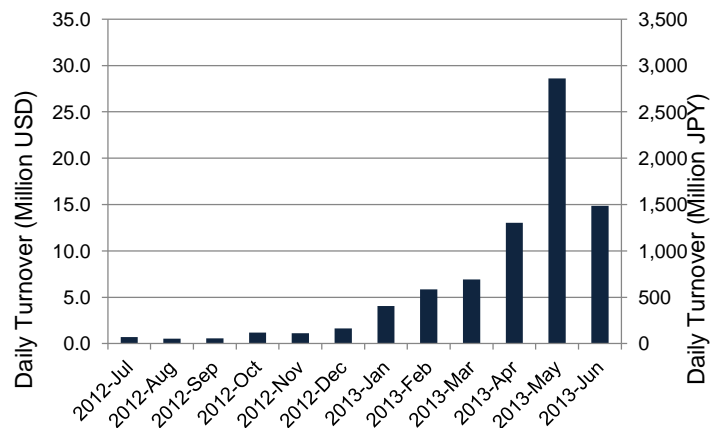


	12-Aug	12-Sep	12-Oct	12-Nov	12-Dec	13-Jan	13-Feb	13-Mar	13-Apr	13-May	13-Jun	
Value	404	397	428	507	660	773	782	889	1,099	1,257	1,061	(MM USD)
(N225)	321	316	340	383	509	605	618	677	864	976	816	(MM USD)
Share	4.51%	3.83%	4.05%	4.57%	4.56%	3.78%	3.45%	3.81%	3.43%	3.40%	3.98%	
(N225)	5.10%	4.32%	4.55%	5.10%	4.99%	4.34%	3.75%	4.26%	3.94%	3.68%	4.28%	
Improve	10.81	11.53	11.84	11.33	10.31	9.67	9.30	8.13	7.80	7.18	7.38	(N225 BPS)
TSE Spread	30.21	30.32	29.76	28.70	27.01	25.88	25.43	22.32	21.97	21.28	22.78	(N225 BPS)

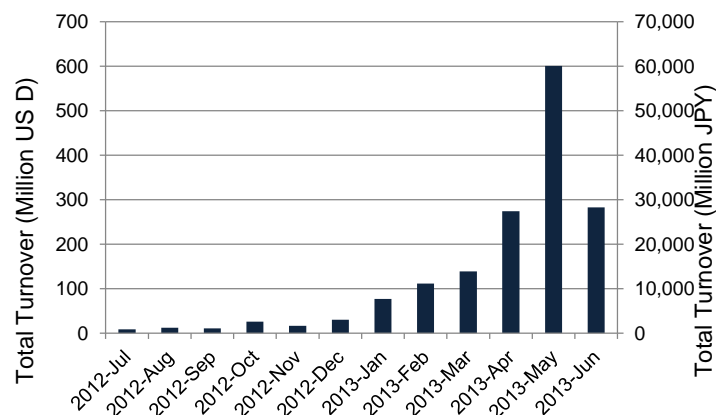
*1USD=97.44JPY

Summary of Nighttime Session by Month

Average Daily Turnover by Month



Total Turnover by Month



Turnover Top 30 Names in Nighttime Session of Month

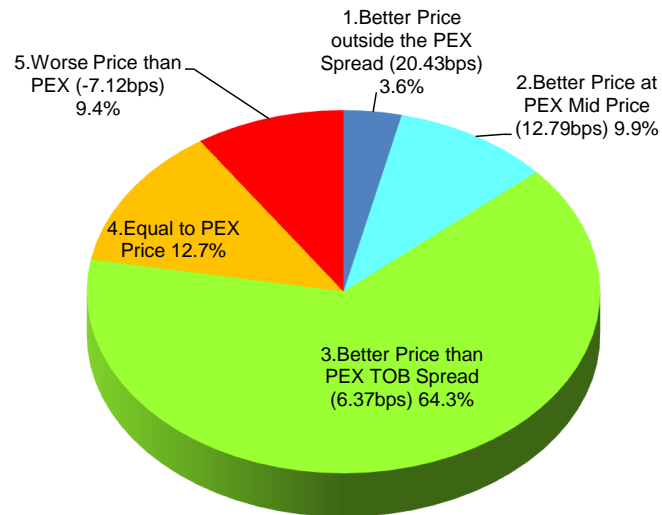
Rank	Symbol	Description	Turnover (USD)	Market Share vs PrimaryEX(%)
1	3765	GUNGHO	48,680,466	0.51
2	4587	PEPTID	19,232,032	0.48
3	7203	TOYOTA	18,497,690	0.09
4	8411	MIZUHO	9,803,073	0.10
5	4583	CHIOME	9,024,158	1.21
6	3386	COSMOBIO	8,172,561	0.54
7	8306	MUFG	8,150,889	0.06
8	2370	MEDINET	7,876,814	0.29
9	2497	UNITED	7,351,075	0.72
10	2931	EUGLENA	7,287,201	0.43
11	3668	COLOPL	6,955,651	0.44
12	7707	PSS	6,615,773	0.39
13	6758	SONY	6,293,221	0.07
14	4584	GTS	4,642,700	1.22
15	3656	KLAB	4,566,747	0.47
16	8604	NOMRAHD	4,330,181	0.03
17	4571	NANOCARI	4,246,766	0.30
18	9501	TEPCO	4,190,548	0.02
19	4579	RAQUALIA	4,149,834	1.13
20	2160	GNI	4,025,469	0.82
21	7261	MAZDA	3,948,296	0.04
22	3674	AUCFAN	3,886,561	0.31
23	4974	TAKARBIO	3,791,146	0.29
24	8086	NIPRO	3,520,046	0.11
25	7751	CANON	3,487,231	0.06
26	2160	GNI	4,025,469	0.82
27	7261	MAZDA	3,948,296	0.04
28	3674	AUCFAN	3,886,561	0.31
29	4974	TAKARBIO	3,791,146	0.29
30	8086	NIPRO	3,520,046	0.11

*1USD=97.44JPY

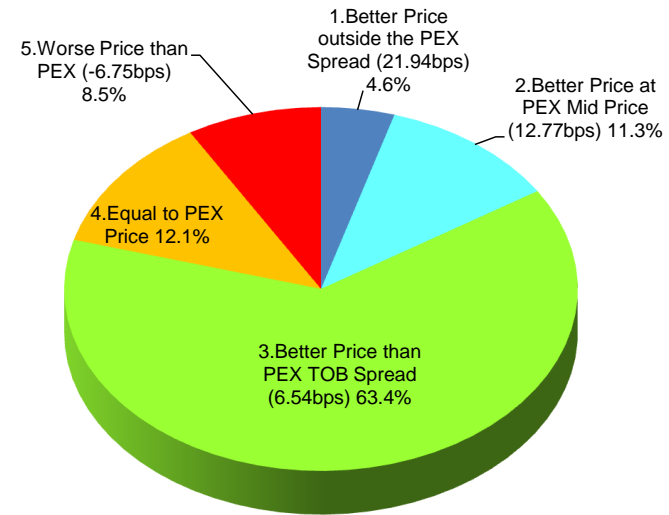
Daytime Session Execution

Nikkei 225 universe in June-2013

PEX : Primary Exchange



BUY Improvement



SELL Improvement

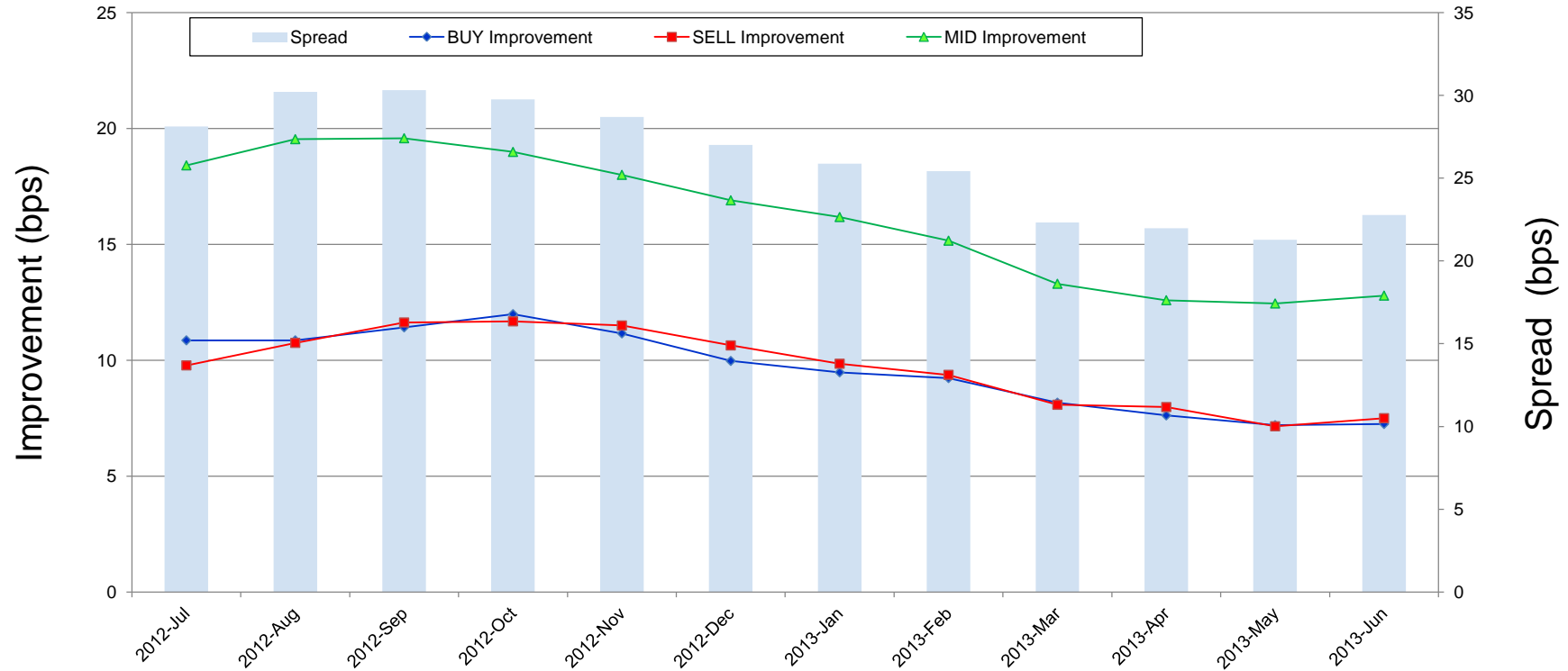
Note1: Excluded the executions from: before 9AM, lunch break, and after 3PM

Note2: Price improvement is calculated by comparing the execution price against the primary market's best bid for each sell or best offer for each buy at the point of execution and is calculated from the perspective of the Taker side of the trade

Note3: The chart% is based on number of trades executed

Improvement of Execution

Nikkei 225 universe in June-2013



Note1: Excluded the executions from: before 9AM, lunch break, and after 3PM

Note2: Price improvement is calculated by comparing the execution price against the primary market's best bid for each sell or best offer for each buy at the point of execution and is calculated from the perspective of the Taker side of the trade

Turnover Top 50 Names in Daytime Session

Ranking for June-2013

Rank	Symbol	Description	Turnover (Million USD)	Market Share vs PrimaryEX(%)
1	7203	TOYOTA	966.14	4.91
2	8411	MIZUHO	700.13	7.15
3	8306	MUFG	573.62	4.51
4	9984	SOFTBNK	550.95	5.16
5	8316	SMFG	454.44	4.13
6	7751	CANON	444.33	7.64
7	9983	FASTRET	407.35	5.53
8	7267	HONDA	350.87	6.45
9	8830	SMIRE&D	271.71	6.81
10	2914	JT	265.64	7.89
11	7261	MAZDA	262.33	2.91
12	6501	HITACHI	239.06	6.04
13	8309	SMTRUST	207.79	6.75
14	9432	NTT	207.15	4.81
15	6502	TOSHIBA	193.96	5.07
16	8801	MTI-FU	191.91	3.72
17	9501	TEPCO	189.02	1.00
18	4503	ASTELLAS	177.15	7.04
19	8031	MITSUI	171.68	4.65
20	5401	NSTEELSM	170.35	6.72
21	6758	SONY	169.99	1.90
22	7201	NISSAN	169.84	4.35
23	4502	TAKEDAP	166.00	5.21
24	7202	ISUZU	160.41	5.87
25	8601	DAIWASG	157.72	3.70

*1USD=97.44JPY

Rank	Symbol	Description	Turnover (Million USD)	Market Share vs PrimaryEX(%)
26	3382	7&I-HD	154.46	6.76
27	8058	MITBISI	148.12	3.50
28	4063	SINETUC	143.69	6.13
29	9433	KDDI	138.29	4.05
30	6902	DENSO	137.95	5.95
31	8802	MTB-EST	135.99	2.48
32	5108	BRIDSTN	134.51	5.19
33	9020	JR EAST	133.30	6.73
34	8604	NOMRAHD	129.36	1.00
35	6954	FANUC	123.70	2.94
36	7011	MHI	123.41	4.11
37	1963	JGC	123.05	8.20
38	6988	NTTODEN	118.51	6.99
39	6367	DAIKINI	114.94	4.87
40	7270	FUJIHVY	113.45	1.64
41	8308	RESONA	112.11	5.67
42	8002	MARBENI	111.74	4.86
43	6503	MELCO	106.37	5.01
44	6971	KYOCERA	106.04	4.88
45	9022	JR CENT	102.24	7.91
46	1928	SEKSUIH	100.71	6.33
47	9531	TKO-GAS	100.45	5.67
48	4452	KAO	99.53	6.99
49	8001	ITOCHU	98.80	4.20
50	7013	IHI	98.64	9.14

Improvement of Monthly Turnover for Top 25 Names

Ranking for June-2013

Rank	Symbol	Name	Sell Executions							Improve Avg bps	Buy Executions							Improve Avg bps
			Worse(A)		Equal(B)		Better (C)		(B)+(C)		Worse(A)		Equal(B)		Better (C)		(B)+(C)	
1	7203	TOYOTA	884	2.32%	2,796	7.32%	34,495	90.36%	97.68%	5.75	1,129	3.05%	2,929	7.92%	32,947	89.03%	97.68%	5.96
2	8411	MIZUHO	661	1.25%	3,667	6.95%	48,427	91.80%	98.75%	21.03	570	1.13%	3,892	7.72%	45,955	91.15%	98.75%	21.64
3	8306	MUFG	1,737	3.24%	5,292	9.86%	46,629	86.90%	96.76%	5.70	1,859	3.41%	5,695	10.44%	46,984	86.15%	96.76%	6.40
4	9984	SOFTBNK	1,463	6.18%	2,548	10.76%	19,672	83.06%	93.82%	5.27	1,831	7.12%	2,706	10.52%	21,189	82.36%	93.82%	5.59
5	8316	SMFG	1,935	7.81%	2,888	11.66%	19,946	80.53%	92.19%	3.52	2,213	8.53%	2,930	11.30%	20,794	80.17%	92.19%	4.20
6	7751	CANON	1,099	3.63%	2,203	7.28%	26,963	89.09%	96.37%	4.97	1,070	3.99%	2,239	8.35%	23,502	87.66%	96.37%	4.90
7	9983	FASTRET	690	12.54%	530	9.63%	4,281	77.82%	87.46%	3.76	786	11.64%	594	8.80%	5,373	79.56%	87.46%	5.16
8	7267	HONDA	1,311	5.35%	2,416	9.86%	20,771	84.79%	94.65%	4.08	1,710	7.28%	2,281	9.71%	19,502	83.01%	94.65%	4.58
9	8830	SMIRE&D	376	10.67%	354	10.05%	2,793	79.28%	89.33%	3.86	483	13.41%	419	11.63%	2,700	74.96%	89.33%	4.68
10	2914	JT	1,320	6.47%	1,716	8.41%	17,373	85.12%	93.53%	4.16	1,448	7.18%	1,851	9.17%	16,879	83.65%	93.53%	4.83
11	7261	MAZDA	1,115	6.19%	1,978	10.99%	14,912	82.82%	93.81%	9.16	1,026	5.98%	2,185	12.74%	13,935	81.27%	93.81%	10.10
12	6501	HITACHI	1,221	9.23%	1,653	12.50%	10,353	78.27%	90.77%	4.35	1,213	8.78%	1,551	11.23%	11,047	79.99%	90.77%	5.73
13	8309	SMTRUST	742	5.07%	2,437	16.66%	11,453	78.27%	94.93%	6.87	794	5.61%	2,168	15.32%	11,185	79.06%	94.93%	8.41
14	9432	NTT	1,311	10.99%	1,582	13.27%	9,031	75.74%	89.01%	3.87	1,386	10.96%	1,449	11.45%	9,815	77.59%	89.01%	5.65
15	6502	TOSHIBA	835	6.66%	1,513	12.06%	10,197	81.28%	93.34%	6.71	904	7.26%	1,546	12.41%	10,003	80.33%	93.34%	7.83
16	8801	MTI-FU	263	7.78%	187	5.53%	2,930	86.69%	92.22%	1.75	275	7.95%	166	4.80%	3,019	87.25%	92.22%	2.06
17	9501	TEPCO	1,850	6.25%	3,676	12.42%	24,074	81.33%	93.75%	5.82	1,391	4.43%	3,847	12.25%	26,159	83.32%	93.75%	6.95
18	4503	ASTELLAS	1,179	10.36%	1,283	11.27%	8,921	78.37%	89.64%	4.49	1,505	13.37%	1,204	10.70%	8,546	75.93%	89.64%	5.55
19	8031	MITSUI	1,946	8.27%	3,915	16.64%	17,661	75.08%	91.73%	2.18	2,209	8.76%	4,449	17.65%	18,547	73.58%	91.73%	2.78
20	5401	NSTEELSM	280	1.93%	1,163	8.00%	13,096	90.07%	98.07%	13.68	363	2.37%	1,417	9.27%	13,509	88.36%	98.07%	15.16
21	6758	SONY	2,034	11.06%	3,356	18.25%	12,998	70.69%	88.94%	1.89	2,448	12.36%	3,474	17.54%	13,888	70.11%	88.94%	2.63
22	7201	NISSAN	2,279	8.93%	3,699	14.50%	19,530	76.56%	91.07%	2.78	2,478	9.49%	4,010	15.36%	19,625	75.15%	91.07%	3.50
23	4502	TAKEDAP	811	7.38%	1,166	10.61%	9,012	82.01%	92.62%	3.43	1,139	9.69%	1,174	9.99%	9,436	80.31%	92.62%	3.92
24	7202	ISUZU	1,153	12.03%	1,053	10.99%	7,378	76.98%	87.97%	3.87	1,053	11.53%	1,043	11.42%	7,037	77.05%	87.97%	4.57
25	8601	DAIWASG	1,479	17.23%	1,095	12.76%	6,008	70.01%	82.77%	3.36	1,467	17.34%	1,158	13.69%	5,834	68.97%	82.77%	4.47

Note1: Excluded the executions from: before 9AM, lunch break, and after 3PM

Note2: Price improvement is calculated by comparing the execution price against the primary market's best bid for each sell or best offer for each buy at the point of execution and is calculated from the perspective of the Taker side of the trade