

Japannext PTS Monthly Statistics

April 2013

Registration as a Financial Instrument Business Operator under the Financial Instruments and Exchange Act (FIEA) (including authorization to operate a Proprietary Trading System (PTS)),
Director of Kanto Local Finance Bureau (Kinsho) No.45

TEL: +81-3-4577-4040 FAX:+81-3-3261-1702

WEB Japanese: <http://www.japannext.co.jp/ja>

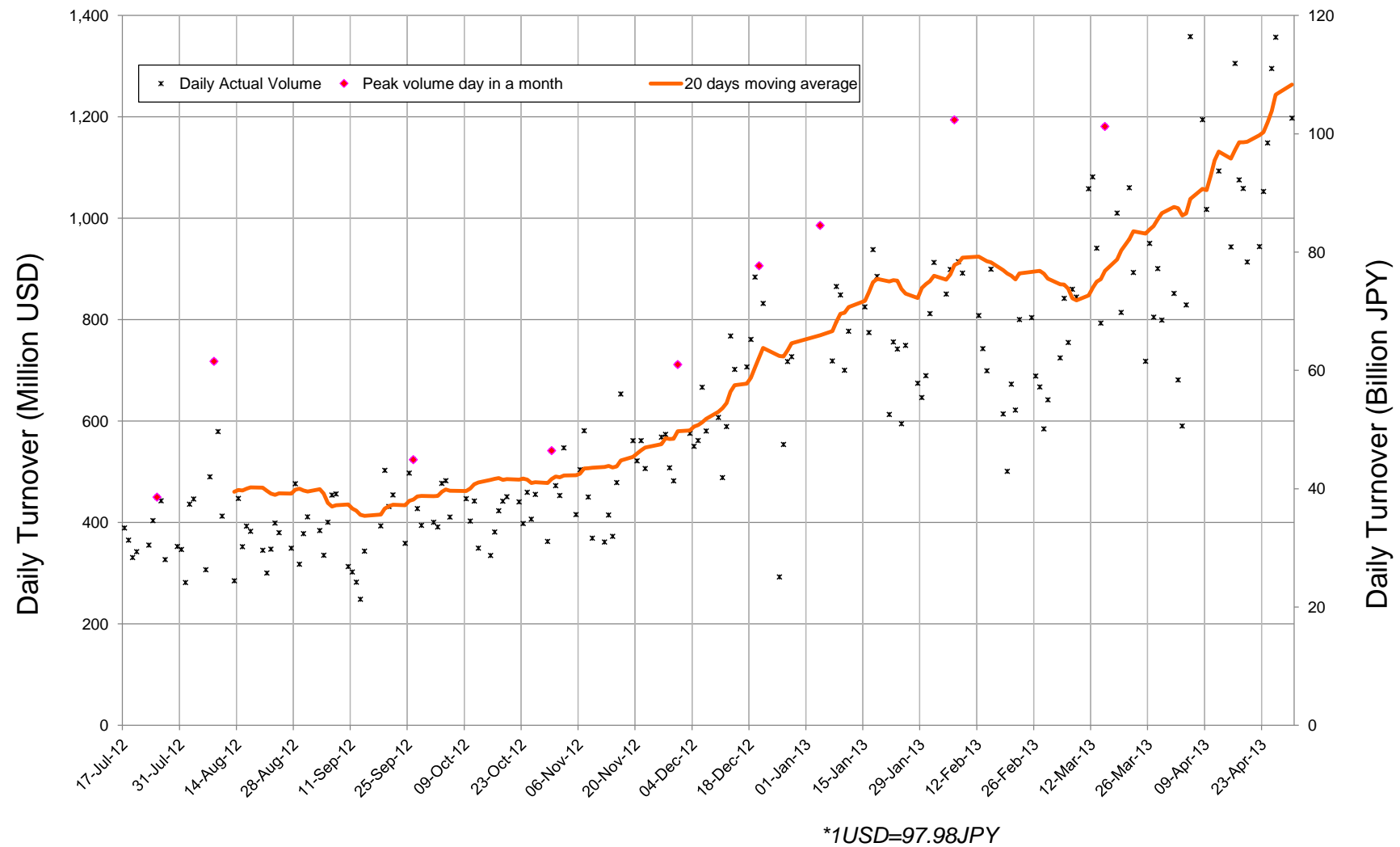
MAIL: ptsbiz@japannext.co.jp

English: <http://www.japannext.co.jp/en>

Disclaimer

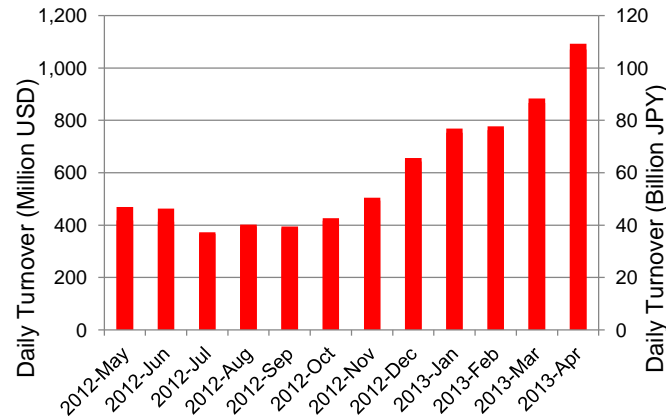
Information provided is for reference purposes only and does not constitute financial product advice nor is constituted as an offer to sell or solicitation to buy any security. The ownership and intellectual property rights of this information are solely and exclusively belong to SBI Japannext Co.,Ltd.("SBIJ") . According users are permitted to access and use the Information for their own personal, non-commercial and internal-use-only. Although SBIJ has made every effort to ensure the accuracy of the information as at the date of publication, SBIJ does not give any warranty as to the accuracy, reliability or completeness of the information. To the extent permitted by law, SBIJ and its employees, officers and contractors shall not be liable for any loss or damage arising in any way (including by way of negligence) from or in connection with any information provided or omitted or from anyone acting or refraining to act in reliance on this information.

Daily Turnover of Daytime Session

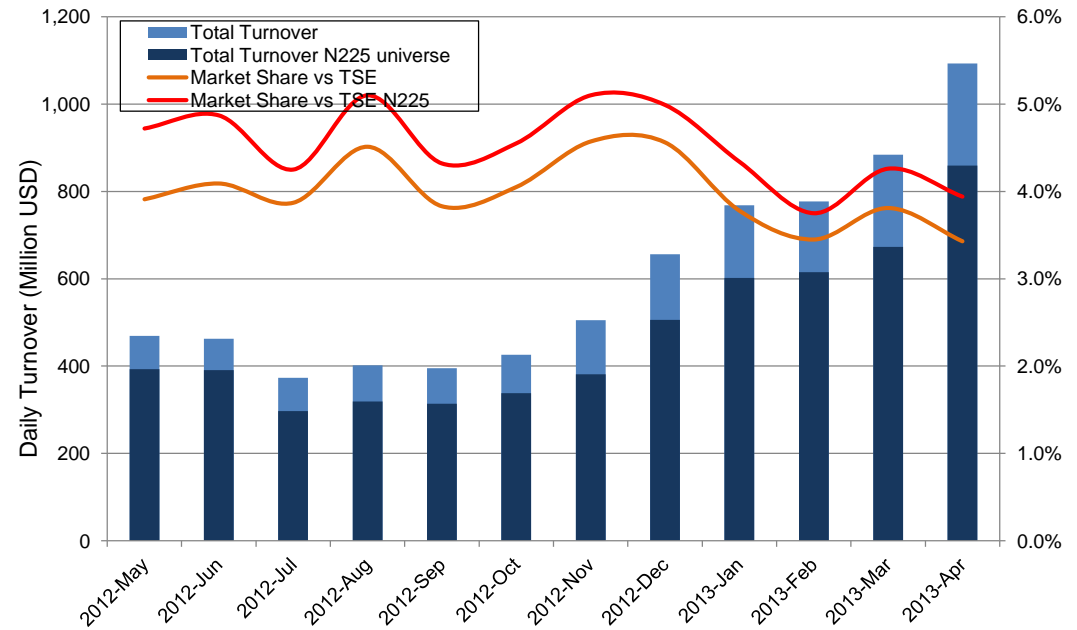


Summary of Daytime Session by Month

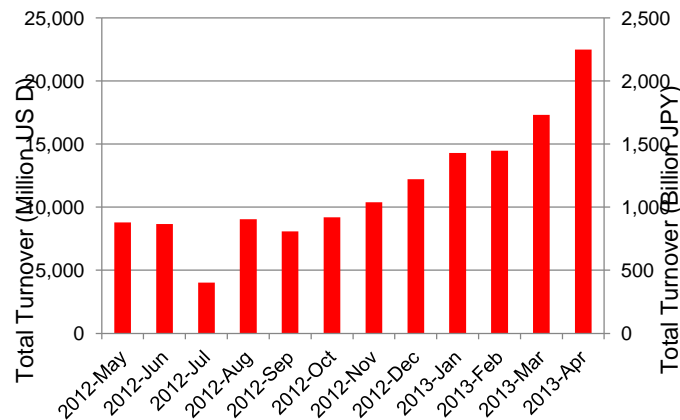
Average Daily Turnover by Month



Market Share vs TSE Turnover



Total Turnover by Month

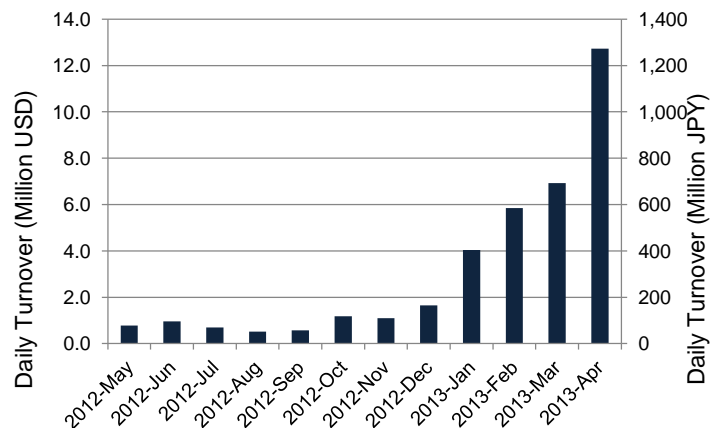


	12-Jun	12-Jul	12-Aug	12-Sep	12-Oct	12-Nov	12-Dec	13-Jan	13-Feb	13-Mar	13-Apr	
Value	463	373	402	395	426	505	656	768	777	884	1,093	(MM USD)
(N225)	391	297	319	314	338	381	506	602	615	673	859	(MM USD)
Share	4.09%	3.87%	4.51%	3.83%	4.05%	4.57%	4.56%	3.78%	3.45%	3.81%	3.43%	
(N225)	4.87%	4.25%	5.10%	4.32%	4.55%	5.10%	4.99%	4.34%	3.75%	4.26%	3.94%	
Improve	9.83	10.32	10.81	11.53	11.84	11.33	10.31	9.67	9.30	8.13	7.80	(N225 BPS)
TSE Spread	26.46	28.13	30.21	30.32	29.76	28.70	27.01	25.88	25.43	22.32	21.97	(N225 BPS)

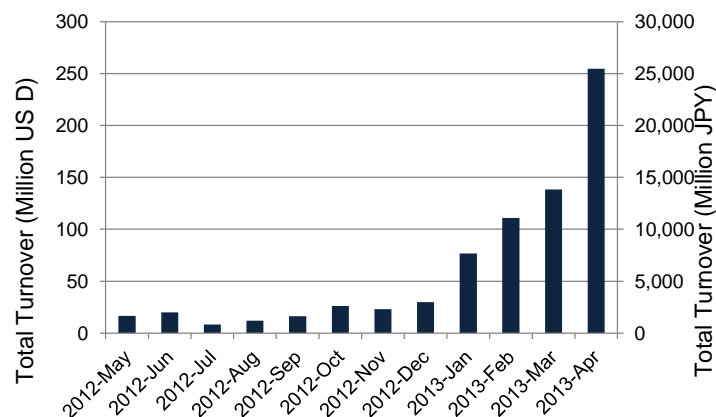
*1USD=97.98JPY

Summary of Nighttime Session by Month

Average Daily Turnover by Month



Total Turnover by Month



Turnover Top 30 Names in Nighttime Session of Month

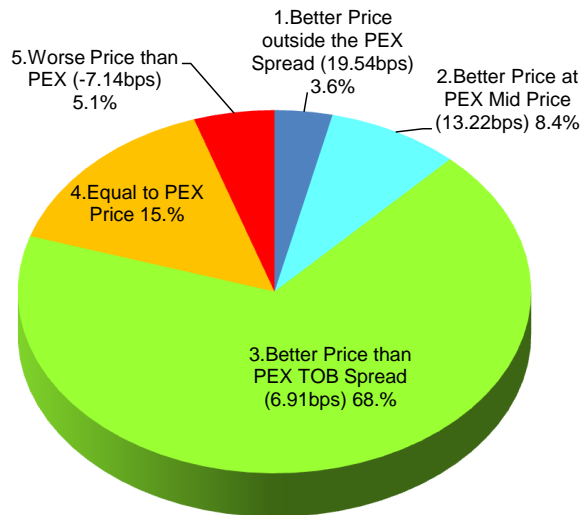
Rank	Symbol	Description	Turnover (USD)	Market Share vs PrimaryEX(%)
1	3765	GUNGHO	24,904,359	0.29
2	8411	MIZUHO	20,982,722	0.12
3	7203	TOYOTA	11,435,027	0.07
4	8306	MUFG	10,642,930	0.05
5	4321	KENEDIX	10,522,977	0.06
6	2931	EUGLENA	7,760,844	0.27
7	8604	NOMRAHD	6,968,994	0.04
8	2337	ICHIGOHD	6,624,013	0.36
9	6758	SONY	6,249,848	0.07
10	8515	AIFUL	6,017,052	0.04
11	4576	DWTI	5,853,348	0.86
12	8316	SMFG	5,659,655	0.04
13	4585	UMNPHARM	4,875,703	0.39
14	9501	TEPCO	4,543,439	0.02
15	8473	SBI	3,552,310	0.04
16	3250	ADWORKS	3,078,127	0.83
17	2395	SHINBIO	3,048,722	0.23
18	7774	J-TEC	3,039,701	0.35
19	7751	CANON	2,784,282	0.04
20	9984	SOFTBNK	2,774,999	0.03
21	3236	PROPERST	2,704,427	1.08
22	3656	KLAB	2,600,895	0.68
23	7261	MAZDA	2,570,202	0.03
24	4574	TAIKO PH	2,536,610	0.33
25	4571	NANOCARI	2,465,252	0.16
26	9984	SOFTBNK	2,774,999	0.03
27	3236	PROPERST	2,704,427	1.08
28	3656	KLAB	2,600,895	0.68
29	7261	MAZDA	2,570,202	0.03
30	4574	TAIKO PH	2,536,610	0.33

*1USD=97.98JPY

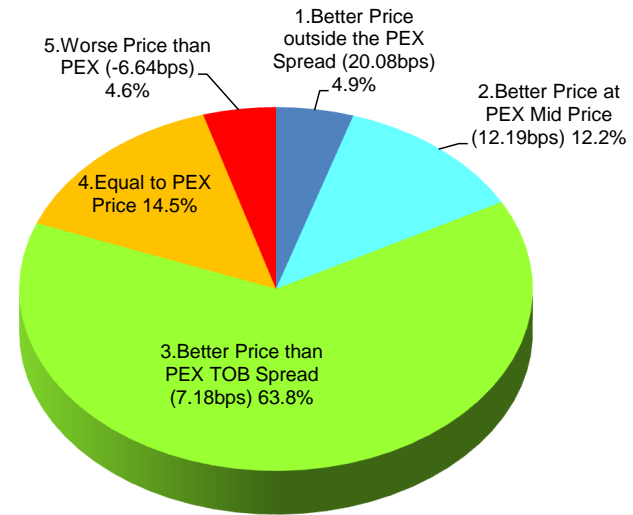
Daytime Session Execution

Nikkei 225 universe in April-2013

PEX : Primary Exchange



BUY Improvement



SELL Improvement

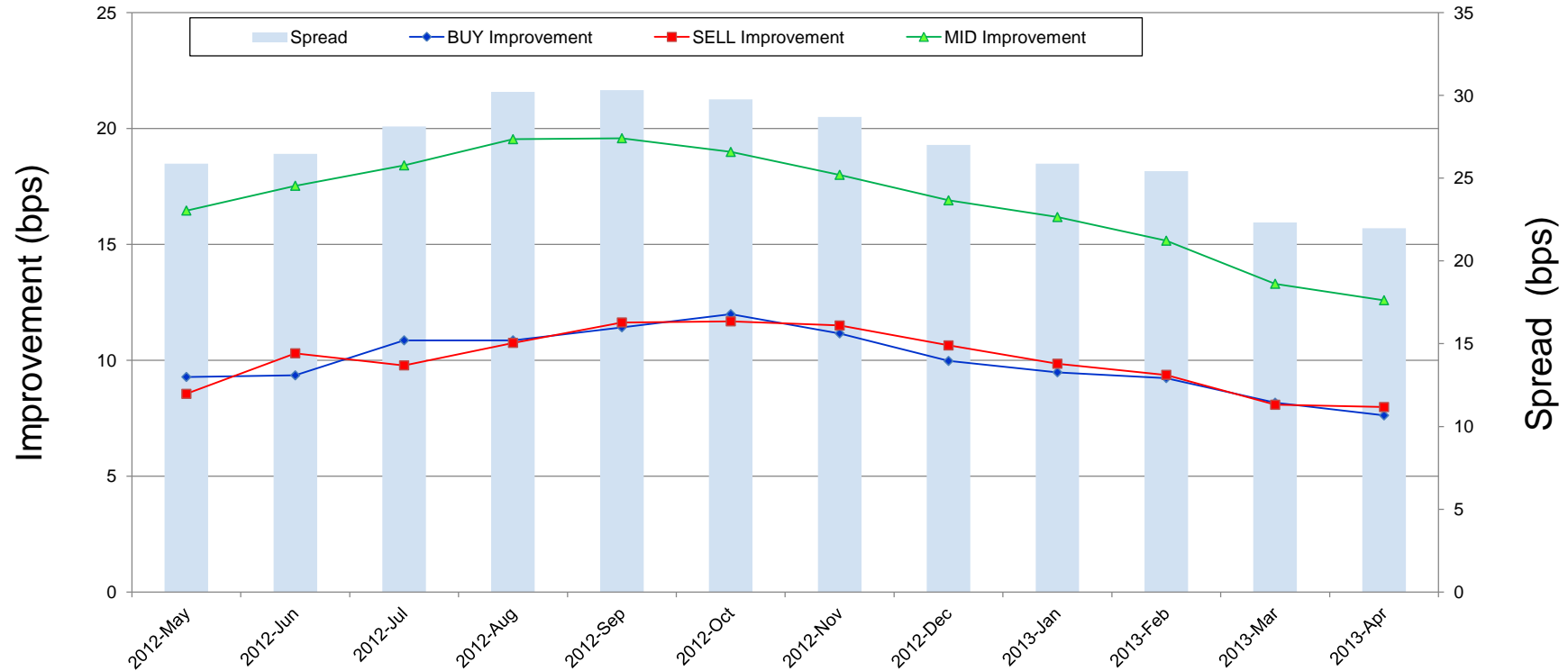
Note1: Excluded the executions from: before 9AM, lunch break, and after 3PM

Note2: Price improvement is calculated by comparing the execution price against the primary market's best bid for each sell or best offer for each buy at the point of execution and is calculated from the perspective of the Taker side of the trade

Note3: The chart% is based on number of trades executed

Improvement of Execution

Nikkei 225 universe in April-2013



Note1: Excluded the executions from: before 9AM, lunch break, and after 3PM

Note2: Price improvement is calculated by comparing the execution price against the primary market's best bid for each sell or best offer for each buy at the point of execution and is calculated from the perspective of the Taker side of the trade

Turnover Top 50 Names in Daytime Session

Ranking for April-2013

Rank	Symbol	Description	Turnover (Million USD)	Market Share vs PrimaryEX(%)
1	7203	TOYOTA	1,010.04	6.31
2	8411	MIZUHO	959.53	5.53
3	8306	MUFG	799.98	4.08
4	8316	SMFG	513.38	3.53
5	9984	SOFTBNK	423.42	3.98
6	9983	FASTRET	420.05	5.76
7	8802	MTB-EST	368.10	4.98
8	7751	CANON	317.98	4.11
9	7267	HONDA	317.15	4.87
10	8801	MTI-FU	310.13	4.99
11	6502	TOSHIBA	288.40	5.16
12	9432	NTT	280.75	7.17
13	8830	SMIRE&D	273.51	4.68
14	7201	NISSAN	268.03	5.55
15	8309	SMTRUST	263.23	5.37
16	4502	TAKEDAP	259.72	6.16
17	6501	HITACHI	254.88	6.14
18	2914	JT	243.36	3.98
19	7261	MAZDA	238.62	3.17
20	9020	JR EAST	226.87	6.75
21	8604	NOMRAHD	220.43	1.11
22	6758	SONY	217.74	2.55
23	9433	KDDI	210.53	6.34
24	4503	ASTELLAS	188.97	7.90
25	7011	MHI	175.27	4.21

*1USD=97.98JPY

Rank	Symbol	Description	Turnover (Million USD)	Market Share vs PrimaryEX(%)
26	4063	SINETUC	173.66	5.85
27	8031	mitsui	170.50	3.81
28	9501	TEPCO	162.89	0.81
29	8804	TKOTATE	156.42	3.02
30	6752	PANASNIC	153.33	4.33
31	3382	7&I-HD	149.71	4.77
32	6503	MELCO	147.65	8.45
33	8815	TKYULND	140.18	3.11
34	8601	DAIWASG	138.32	2.95
35	6326	KUBOTA	137.36	6.12
36	5401	NSTEELSM	136.99	4.15
37	6902	DENSO	135.96	5.43
38	8001	ITOCHU	123.24	4.81
39	7270	FUJIHVV	120.34	3.37
40	6701	NEC	112.79	4.47
41	8058	MITBISI	104.91	2.35
42	7752	RICOH	104.31	5.25
43	9022	JR CENT	104.09	6.51
44	5108	BRIDSTN	102.05	3.13
45	9104	MTI-OSK	97.72	3.65
46	8002	MARBENI	97.14	3.38
47	5713	SMI-MTM	97.09	5.49
48	7202	ISUZU	96.97	5.67
49	6988	NTTODEN	93.18	4.27
50	7012	KHI	90.76	5.36

Improvement of Monthly Turnover for Top 25 Names

Ranking for April-2013

Rank	Symbol	Name	Sell Executions							Improve Avg bps	Buy Executions							Improve Avg bps
			Worse(A)		Equal(B)		Better (C)		(B)+(C)		Worse(A)		Equal(B)		Better (C)		(B)+(C)	
1	7203	TOYOTA	686	1.66%	3,163	7.66%	37,439	90.68%	98.34%	6.45	748	1.99%	3,781	10.04%	33,142	87.98%	98.34%	6.53
2	8411	MIZUHO	453	0.56%	5,386	6.66%	75,017	92.78%	99.44%	19.20	649	0.89%	4,732	6.50%	67,401	92.61%	99.44%	18.99
3	8306	MUFG	1,616	2.32%	8,600	12.32%	59,573	85.36%	97.68%	4.95	1,686	2.54%	7,438	11.22%	57,196	86.24%	97.68%	5.97
4	8316	SMFG	1,360	4.17%	4,348	13.32%	26,942	82.52%	95.83%	3.77	1,475	4.73%	4,694	15.06%	24,994	80.20%	95.83%	3.96
5	9984	SOFTBNK	1,346	5.20%	3,940	15.24%	20,575	79.56%	94.80%	3.20	1,393	5.55%	3,747	14.92%	19,973	79.53%	94.80%	4.04
6	9983	FASTRET	463	7.95%	818	14.04%	4,546	78.02%	92.05%	4.46	422	7.94%	936	17.61%	3,956	74.44%	92.05%	5.16
7	8802	MTB-EST	392	6.96%	994	17.64%	4,250	75.41%	93.04%	4.56	408	7.37%	944	17.06%	4,182	75.57%	93.04%	5.37
8	7751	CANON	577	2.80%	2,691	13.05%	17,354	84.15%	97.20%	4.19	587	2.83%	3,018	14.56%	17,120	82.61%	97.20%	4.27
9	7267	HONDA	786	3.36%	3,350	14.33%	19,238	82.31%	96.64%	3.74	1,092	4.90%	3,470	15.56%	17,734	79.54%	96.64%	4.14
10	8801	MTI-FU	269	6.29%	873	20.40%	3,138	73.32%	93.71%	3.77	336	7.36%	755	16.54%	3,474	76.10%	93.71%	5.11
11	6502	TOSHIBA	522	2.67%	2,116	10.82%	16,926	86.52%	97.33%	6.91	744	3.96%	2,195	11.67%	15,863	84.37%	97.33%	7.25
12	9432	NTT	1,348	6.00%	2,879	12.82%	18,238	81.18%	94.00%	3.72	1,520	7.16%	3,018	14.22%	16,688	78.62%	94.00%	4.19
13	8830	SMIRE&D	309	10.57%	394	13.47%	2,221	75.96%	89.43%	3.59	353	12.44%	322	11.35%	2,163	76.22%	89.43%	4.17
14	7201	NISSAN	1,514	3.38%	7,053	15.76%	36,188	80.86%	96.62%	3.00	1,618	3.69%	6,877	15.67%	35,403	80.65%	96.62%	3.34
15	8309	SMTRUST	1,114	5.48%	3,487	17.14%	15,742	77.38%	94.52%	6.67	1,374	7.16%	3,027	15.78%	14,777	77.05%	94.52%	7.67
16	4502	TAKEDAP	387	2.22%	1,368	7.84%	15,697	89.94%	97.78%	7.19	464	3.28%	1,336	9.45%	12,331	87.26%	97.78%	6.70
17	6501	HITACHI	474	2.84%	1,907	11.44%	14,282	85.71%	97.16%	5.52	557	3.45%	1,828	11.31%	13,777	85.24%	97.16%	6.05
18	2914	JT	626	3.64%	1,937	11.26%	14,645	85.11%	96.36%	4.33	632	4.28%	2,322	15.71%	11,829	80.02%	96.36%	3.98
19	7261	MAZDA	359	1.72%	2,538	12.18%	17,944	86.10%	98.28%	11.23	361	1.66%	2,544	11.69%	18,848	86.65%	98.28%	12.26
20	9020	JR EAST	759	6.64%	1,657	14.49%	9,016	78.87%	93.36%	3.94	821	8.03%	1,807	17.67%	7,601	74.31%	93.36%	4.72
21	8604	NOMRAHD	442	1.82%	5,038	20.73%	18,820	77.45%	98.18%	3.19	655	2.86%	4,963	21.69%	17,261	75.44%	98.18%	3.56
22	6758	SONY	1,375	3.88%	5,870	16.57%	28,186	79.55%	96.12%	1.71	1,433	4.03%	5,713	16.08%	28,381	79.89%	96.12%	2.11
23	9433	KDDI	1,122	6.15%	2,799	15.35%	14,309	78.49%	93.85%	3.93	937	5.28%	2,792	15.72%	14,032	79.00%	93.85%	4.63
24	4503	ASTELLAS	554	4.10%	1,376	10.19%	11,567	85.70%	95.90%	6.37	584	4.91%	1,735	14.59%	9,576	80.50%	95.90%	6.24
25	7011	MHI	455	3.84%	1,720	14.52%	9,673	81.64%	96.16%	5.13	610	5.43%	1,590	14.17%	9,024	80.40%	96.16%	5.75

Note1: Excluded the executions from: before 9AM, lunch break, and after 3PM

Note2: Price improvement is calculated by comparing the execution price against the primary market's best bid for each sell or best offer for each buy at the point of execution and is calculated from the perspective of the Taker side of the trade