

# Japannext PTS Monthly Statistics

## February 2013

Registration as a Financial Instrument Business Operator under the Financial Instruments and Exchange Act (FIEA) (including authorization to operate a Proprietary Trading System (PTS)),  
Director of Kanto Local Finance Bureau (Kinsho) No.45

TEL: +81-3-4577-4040 FAX:+81-3-3261-1702

WEB Japanese: <http://www.japannext.co.jp/ja>

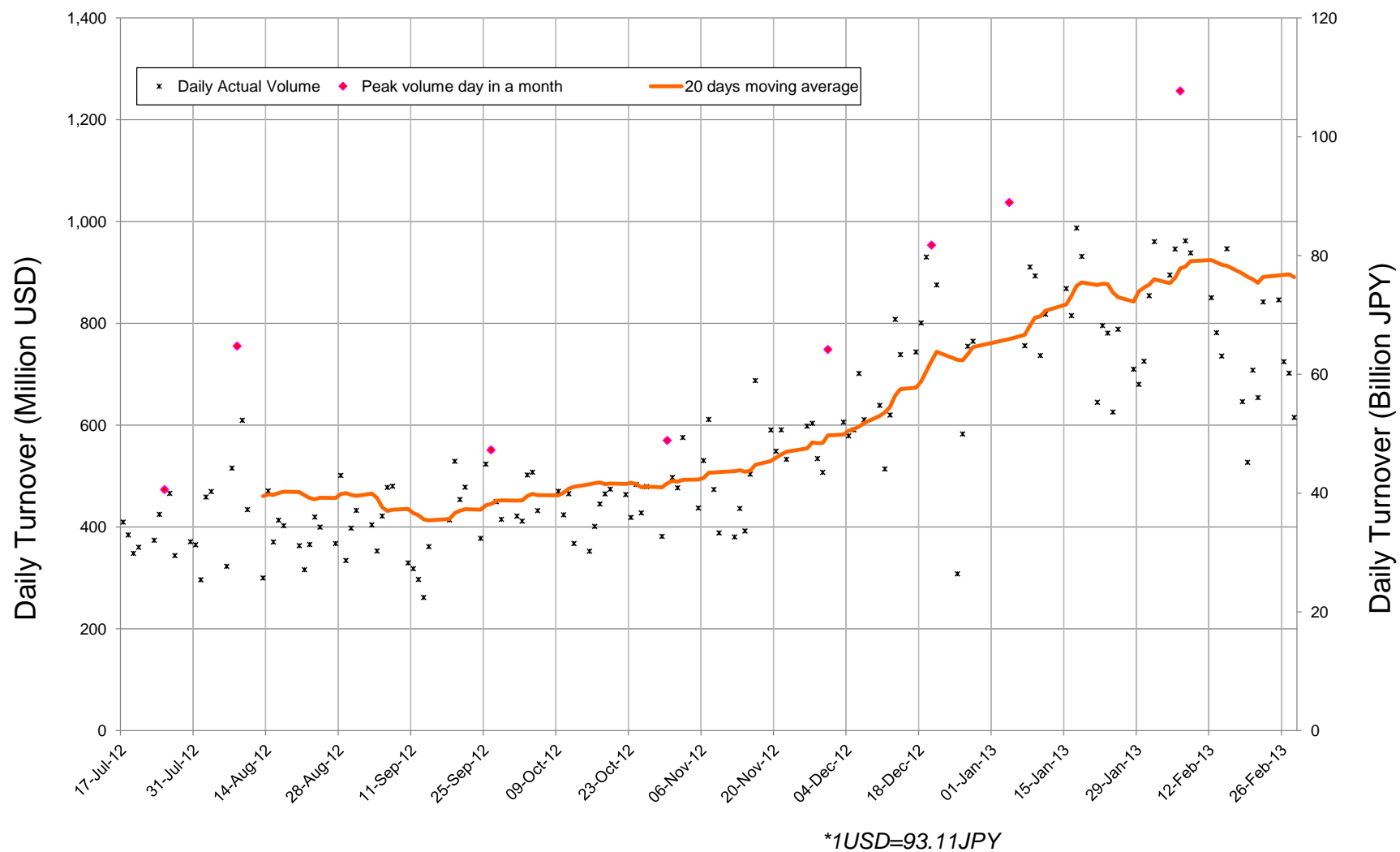
MAIL: [ptsbiz@japannext.co.jp](mailto:ptsbiz@japannext.co.jp)

English: <http://www.japannext.co.jp/en>

#### Disclaimer

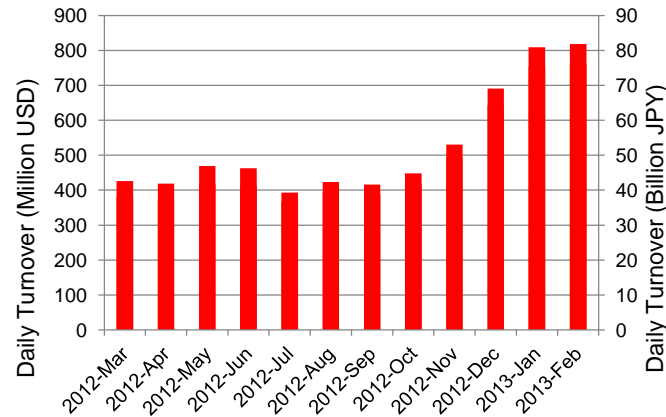
Information provided is for reference purposes only and does not constitute financial product advice nor is constituted as an offer to sell or solicitation to buy any security. The ownership and intellectual property rights of this information are solely and exclusively belong to SBI Japannext Co.,Ltd.( "SBIJ") . According users are permitted to access and use the Information for their own personal, non-commercial and internal-use-only. Although SBIJ has made every effort to ensure the accuracy of the information as at the date of publication, SBIJ does not give any warranty as to the accuracy, reliability or completeness of the information. To the extent permitted by law, SBIJ and its employees, officers and contractors shall not be liable for any loss or damage arising in any way (including by way of negligence) from or in connection with any information provided or omitted or from anyone acting or refraining to act in reliance on this information.

# Daily Turnover of Daytime Session

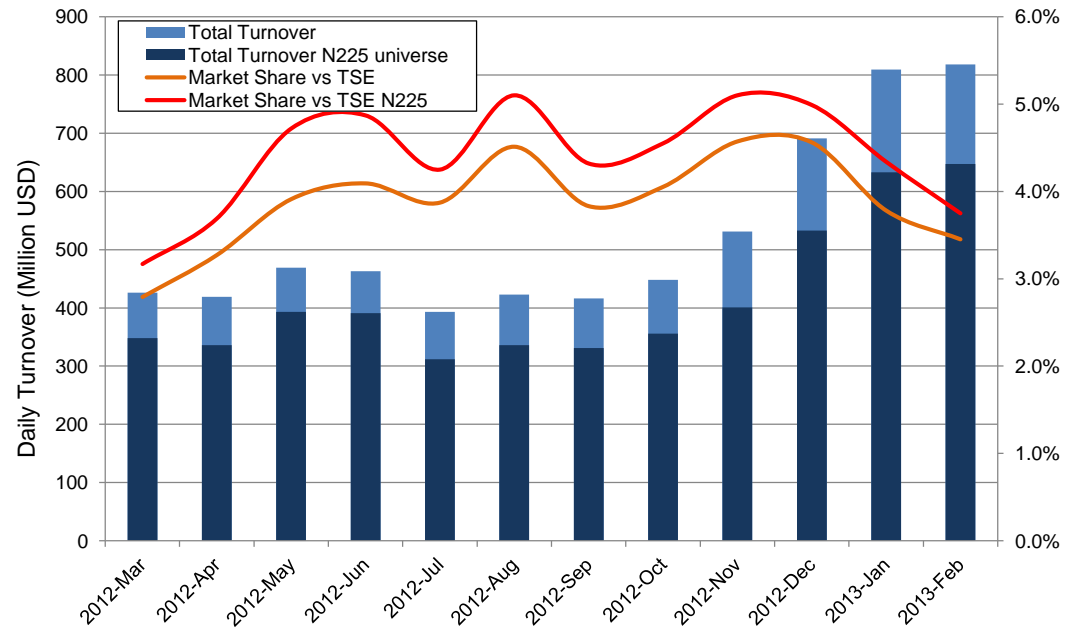


# Summary of Daytime Session by Month

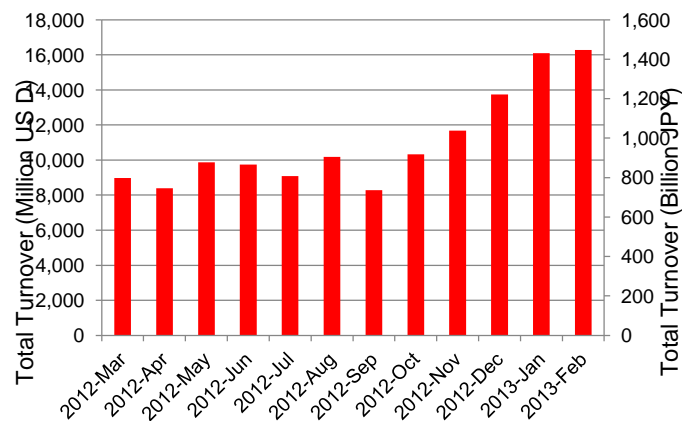
Average Daily Turnover by Month



Market Share vs TSE Turnover



Total Turnover by Month

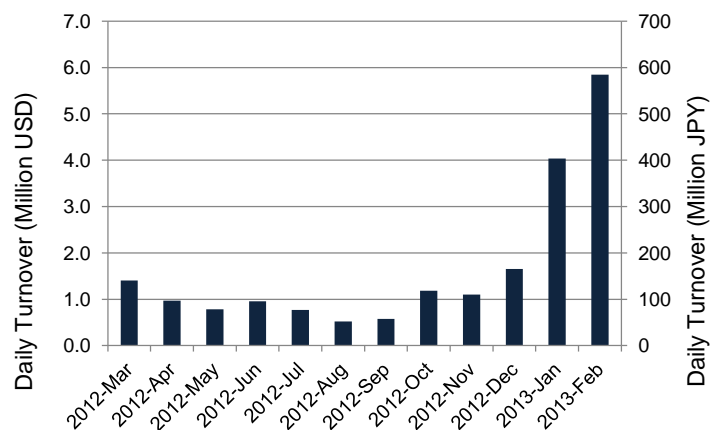


	12-Apr	12-May	12-Jun	12-Jul	12-Aug	12-Sep	12-Oct	12-Nov	12-Dec	13-Jan	13-Feb	
Value	419	469	463	393	423	416	448	531	691	809	818	(MM USD)
(N225)	336	393	391	312	336	331	356	401	533	633	647	(MM USD)
Share	3.27%	3.91%	4.09%	3.87%	4.51%	3.83%	4.05%	4.57%	4.56%	3.78%	3.45%	
(N225)	3.69%	4.72%	4.87%	4.25%	5.10%	4.32%	4.55%	5.10%	4.99%	4.34%	3.75%	
Improve	8.97	8.92	9.83	10.31	10.79	11.51	11.82	11.31	10.28	9.66	9.29	(N225 BPS)
TSE Spread	25.72	25.87	26.46	28.10	30.17	30.28	29.73	28.66	26.96	25.84	25.41	(N225 BPS)

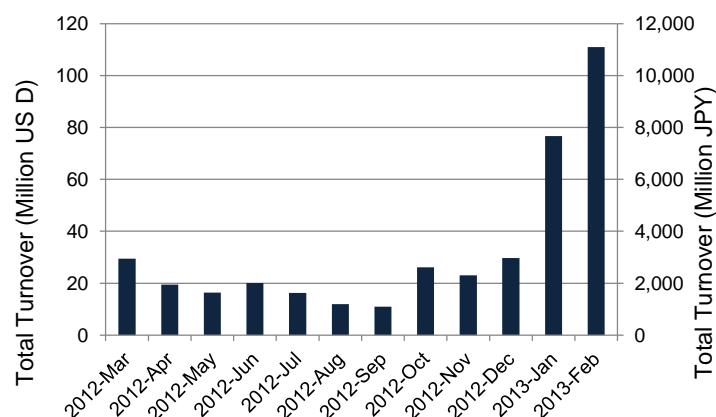
\*1USD=93.11JPY

# Summary of Nighttime Session by Month

**Average Daily Turnover by Month**



**Total Turnover by Month**



**Turnover Top 30 Names in Nighttime Session of Month**

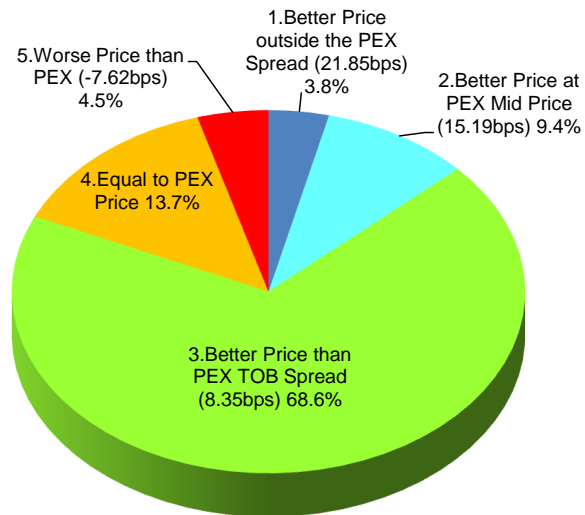
Rank	Symbol	Description	Turnover (USD)	Market Share vs PrimaryEX(%)
1	8411	MIZUHO	15,298,065	0.09
2	3765	GUNGHO	10,167,209	0.40
3	4583	CHIOME	9,485,693	1.05
4	6758	SONY	6,506,540	0.05
5	4571	NANOCARI	6,200,179	0.19
6	7203	TOYOTA	4,556,093	0.03
7	7261	MAZDA	3,008,612	0.02
8	3632	GREE	2,968,414	0.11
9	8306	MUFG	2,771,484	0.02
10	4586	MEDRX	2,758,875	0.37
11	3723	FALCOM	2,162,726	2.41
12	6752	PANASONIC	2,121,600	0.03
13	8316	SMFG	1,877,099	0.02
14	2395	SHINBIO	1,501,962	0.41
15	7751	CANON	1,449,565	0.03
16	4573	R-TECH	1,431,625	0.49
17	7777	3DMATRIX	1,367,318	0.53
18	8604	NOMRAHD	1,279,066	0.01
19	2370	MEDINET	1,200,566	0.26
20	2160	GNI	1,080,188	0.28
21	3325	KENKOCOM	1,049,077	0.56
22	7267	HONDA	1,046,356	0.02
23	3181	KAIOKOKU	911,815	0.50
24	8515	AIFUL	882,149	0.03
25	7774	J-TEC	852,052	0.27
26	2160	GNI	1,080,188	0.28
27	3325	KENKOCOM	1,049,077	0.56
28	7267	HONDA	1,046,356	0.02
29	3181	KAIOKOKU	911,815	0.50
30	8515	AIFUL	882,149	0.03

\*1USD=93.11JPY

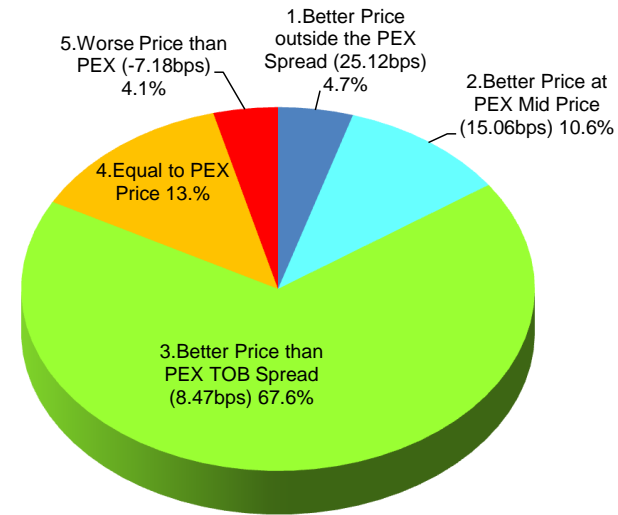
# Daytime Session Execution

## Nikkei 225 universe in February-2013

PEX : Primary Exchange



**BUY Improvement**



**SELL Improvement**

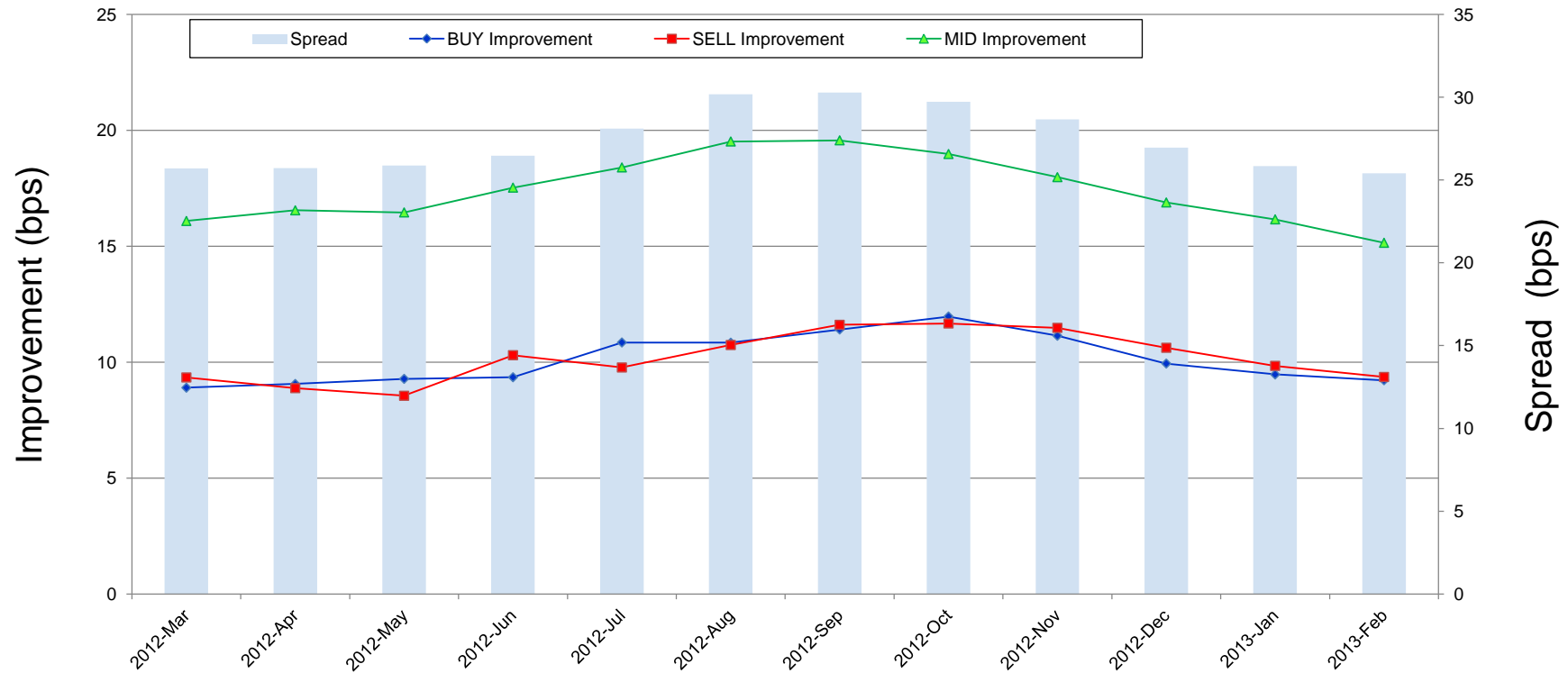
Note1: Excluded the executions from: before 9AM, lunch break, and after 3PM

Note2: Price improvement is calculated by comparing the execution price against the primary market's best bid for each sell or best offer for each buy at the point of execution and is calculated from the perspective of the Taker side of the trade

Note3: The chart% is based on number of trades executed

# Improvement of Execution

## Nikkei 225 universe in February-2013



Note1: Excluded the executions from: before 9AM, lunch break, and after 3PM

Note2: Price improvement is calculated by comparing the execution price against the primary market's best bid for each sell or best offer for each buy at the point of execution and is calculated from the perspective of the Taker side of the trade

## Turnover Top 50 Names in Daytime Session

### Ranking for February-2013

Rank	Symbol	Description	Turnover (Million USD)	Market Share vs PrimaryEX(%)
1	8411	MIZUHO	748.58	4.18
2	7203	TOYOTA	622.49	4.30
3	8306	MUFG	478.00	3.96
4	8316	SMFG	306.49	3.13
5	7267	HONDA	295.90	5.81
6	7261	MAZDA	278.71	1.86
7	7201	NISSAN	235.60	6.23
8	4502	TAKEDAP	232.71	8.49
9	7751	CANON	228.87	4.73
10	9432	NTT	226.24	6.43
11	9984	SOFTBNK	221.51	4.15
12	6501	HITACHI	200.85	4.75
13	6758	SONY	171.22	1.38
14	4503	ASTELLAS	163.20	8.52
15	8604	NOMRAHD	162.71	1.74
16	5401	NSTEELSM	157.62	4.77
17	6752	PANASNIC	157.18	1.95
18	6502	TOSHIBA	148.81	3.18
19	6954	FANUC	138.88	3.15
20	8309	SMTRUST	133.10	6.50
21	7011	MHI	115.24	4.36
22	8031	MITSUI	114.01	4.12
23	9020	JR EAST	112.98	6.45
24	9433	KDDI	111.22	6.23
25	8802	MTB-EST	108.64	4.02

\*1USD=93.11JPY

Rank	Symbol	Description	Turnover (Million USD)	Market Share vs PrimaryEX(%)
26	6701	NEC	103.79	4.01
27	9104	MTI-OSK	102.34	4.82
28	8001	ITOCHU	100.94	6.14
29	8058	MITBISI	100.81	2.85
30	7270	FUJIHVV	96.38	4.05
31	8002	MARBENI	95.98	5.90
32	8801	MTI-FU	91.64	3.51
33	8308	RESONA	91.62	5.00
34	6988	NTTODEN	91.23	5.03
35	4063	SINETUC	85.31	4.88
36	9107	K-LINE	84.65	2.96
37	6503	MELCO	84.13	5.62
38	6702	FUJITSU	83.32	4.49
39	7012	KHI	83.24	7.66
40	8053	SMITOMO	82.84	4.12
41	9983	FASTRET	81.31	2.20
42	2914	JT	79.91	2.91
43	5020	JX	78.36	6.21
44	7202	ISUZU	77.19	4.67
45	6902	DENSO	76.28	4.10
46	4523	EISAI	74.00	5.92
47	6753	SHARP	73.23	2.29
48	4005	SMICHEM	73.16	7.40
49	8303	SHINSEI	72.50	5.51
50	8591	ORIX	70.34	3.16

## Improvement of Monthly Turnover for Top 25 Names

### Ranking for February-2013

Rank	Symbol	Name	Sell Executions							Improve Avg bps	Buy Executions							Improve Avg bps
			Worse(A)		Equal(B)		Better (C)		(B)+(C)		Worse(A)		Equal(B)		Better (C)		(B)+(C)	
1	8411	MIZUHO	393	0.70%	4,908	8.80%	50,453	90.49%	99.30%	17.50	444	0.78%	5,104	8.95%	51,484	90.27%	99.30%	20.00
2	7203	TOYOTA	632	2.45%	3,243	12.59%	21,884	84.96%	97.55%	3.41	745	2.75%	3,115	11.48%	23,263	85.77%	97.55%	4.03
3	8306	MUFG	1,090	2.40%	4,750	10.47%	39,509	87.12%	97.60%	6.52	1,034	2.42%	4,535	10.63%	37,110	86.95%	97.60%	7.53
4	8316	SMFG	500	3.24%	2,001	12.96%	12,941	83.80%	96.76%	3.99	551	3.81%	2,220	15.34%	11,699	80.85%	96.76%	4.24
5	7267	HONDA	459	2.62%	1,759	10.02%	15,331	87.36%	97.38%	3.69	458	2.57%	1,722	9.66%	15,652	87.77%	97.38%	4.42
6	7261	MAZDA	644	2.49%	3,383	13.10%	21,797	84.41%	97.51%	11.77	588	2.18%	3,466	12.84%	22,933	84.98%	97.51%	14.52
7	7201	NISSAN	1,348	3.81%	4,607	13.03%	29,410	83.16%	96.19%	3.47	1,339	4.25%	4,877	15.46%	25,322	80.29%	96.19%	3.95
8	4502	TAKEDAP	557	4.20%	1,444	10.88%	11,266	84.92%	95.80%	3.47	701	5.00%	1,466	10.45%	11,864	84.56%	95.80%	3.86
9	7751	CANON	306	2.34%	1,344	10.26%	11,452	87.41%	97.66%	4.47	377	2.88%	1,421	10.86%	11,288	86.26%	97.66%	4.64
10	9432	NTT	750	5.16%	1,737	11.95%	12,052	82.89%	94.84%	3.74	823	5.25%	1,745	11.14%	13,102	83.61%	94.84%	4.57
11	9984	SOFTBNK	406	2.89%	1,563	11.13%	12,077	85.98%	97.11%	4.72	568	4.05%	1,762	12.58%	11,679	83.37%	97.11%	4.89
12	6501	HITACHI	245	2.01%	1,195	9.79%	10,766	88.20%	97.99%	6.82	327	2.63%	1,507	12.13%	10,585	85.23%	97.99%	6.66
13	6758	SONY	924	3.43%	4,214	15.62%	21,835	80.95%	96.57%	2.46	1,052	3.88%	4,476	16.50%	21,599	79.62%	96.57%	2.62
14	4503	ASTELLAS	551	5.59%	1,192	12.09%	8,114	82.32%	94.41%	3.34	519	5.74%	1,006	11.12%	7,521	83.14%	94.41%	4.10
15	8604	NOMRAHD	403	2.37%	2,349	13.80%	14,272	83.83%	97.63%	5.40	451	2.36%	2,677	14.02%	15,968	83.62%	97.63%	5.73
16	5401	NSTEELSM	253	1.82%	1,287	9.26%	12,359	88.92%	98.18%	13.91	236	1.81%	1,166	8.95%	11,622	89.24%	98.18%	16.08
17	6752	PANASNIC	1,047	3.68%	3,958	13.90%	23,479	82.43%	96.32%	4.74	1,052	3.68%	4,052	14.18%	23,463	82.13%	96.32%	5.54
18	6502	TOSHIBA	252	1.92%	1,256	9.57%	11,623	88.52%	98.08%	8.82	311	2.74%	1,207	10.65%	9,820	86.61%	98.08%	9.48
19	6954	FANUC	472	12.93%	687	18.82%	2,491	68.25%	87.07%	1.90	410	11.31%	623	17.19%	2,591	71.50%	87.07%	2.95
20	8309	SMTRUST	416	3.30%	1,508	11.98%	10,667	84.72%	96.70%	10.09	443	3.38%	1,845	14.06%	10,835	82.56%	96.70%	12.11
21	7011	MHI	231	2.88%	988	12.30%	6,812	84.82%	97.12%	6.67	261	3.20%	973	11.92%	6,927	84.88%	97.12%	7.63
22	8031	MITSUI	911	5.34%	2,876	16.87%	13,258	77.78%	94.66%	2.01	970	6.83%	2,870	20.21%	10,363	72.96%	94.66%	2.45
23	9020	JR EAST	208	3.76%	728	13.16%	4,596	83.08%	96.24%	4.75	242	4.29%	795	14.09%	4,607	81.63%	96.24%	5.47
24	9433	KDDI	181	3.23%	554	9.88%	4,870	86.89%	96.77%	4.85	197	3.49%	687	12.16%	4,765	84.35%	96.77%	5.60
25	8802	MTB-EST	149	6.15%	316	13.04%	1,959	80.82%	93.85%	1.89	151	6.94%	236	10.84%	1,790	82.22%	93.85%	2.27

Note1: Excluded the executions from: before 9AM, lunch break, and after 3PM

Note2: Price improvement is calculated by comparing the execution price against the primary market's best bid for each sell or best offer for each buy at the point of execution and is calculated from the perspective of the Taker side of the trade