

Japannext PTS Weekly Statistics

20 February 2012

Registration as a Financial Instrument Business Operator under the Financial Instruments and Exchange Act (FIEA) (including authorization to operate a Proprietary Trading System (PTS)),
Director of Kanto Local Finance Bureau (Kinsho) No.45

TEL: +81-3-4577-4040

FAX: +81-3-3261-1702

MAIL: ptsbiz@japannext.co.jp

WEB Japanese:

<http://www.japannext.co.jp/ja>

English: <http://www.japannext.co.jp/en>

Disclaimer

Information provided is for reference purposes only and does not constitute financial product advice nor is constituted as an offer to sell or solicitation to buy any security. The ownership and intellectual property rights of this information are solely and exclusively belong to SBI Japannext Co.,Ltd. ("SBIJ"). According users are permitted to access and use the Information for their own personal, non-commercial and internal-use-only. Although SBIJ has made every effort to ensure the accuracy of the information as at the date of publication, SBIJ does not give any warranty as to the accuracy, reliability or completeness of the information. To the extent permitted by law, SBIJ and its employees, officers and contractors shall not be liable for any loss or damage arising in any way (including by way of negligence) from or in connection with any information provided or omitted or from anyone acting or refraining to act in reliance on this information.

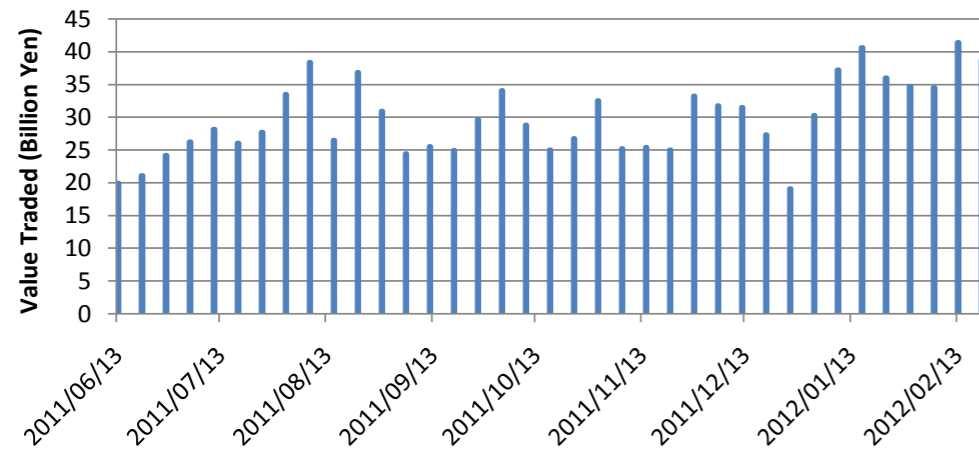
Daily Average Statistics of The Week

Daily Average in Week of 20-February-2012

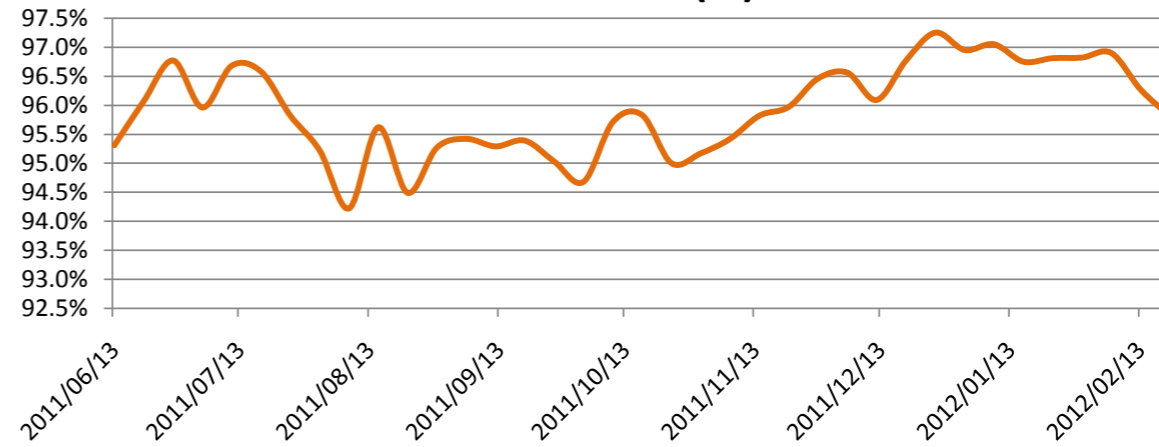
	# of Shares Traded	Turnover (JPY)	Universe	No of Trades	% of Inside	Avg Improvement(bps)
Total	65,727,347	38,689,196,803	828	94,131	95.81%	8.85
Large CAP	33,638,727	24,640,293,268	100	42,987	95.82%	8.35
Mid CAP	27,738,003	12,358,342,165	389	41,207	96.02%	8.90
Small CAP	4,350,617	1,690,561,370	339	9,938	94.91%	12.16

*Price improvement is calculated by comparing the execution price against the primary market's best bid for each sell or best offer for each buy at the point of execution and is calculated from the perspective of the Taker side of the trade

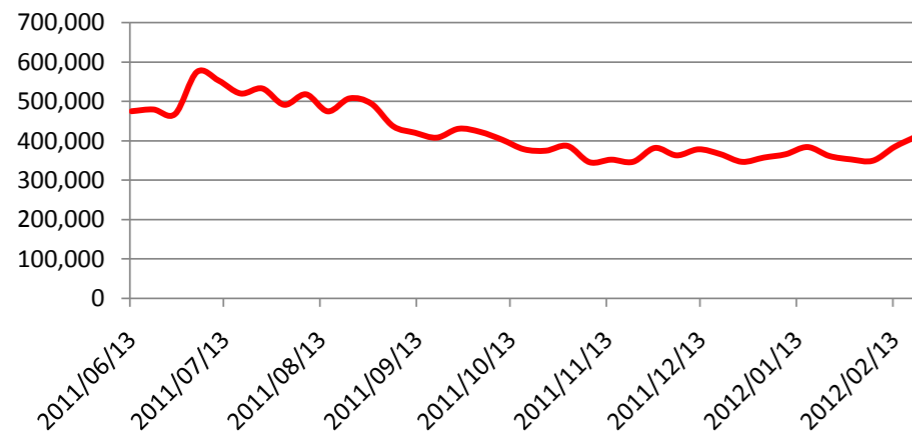
Average Turnover



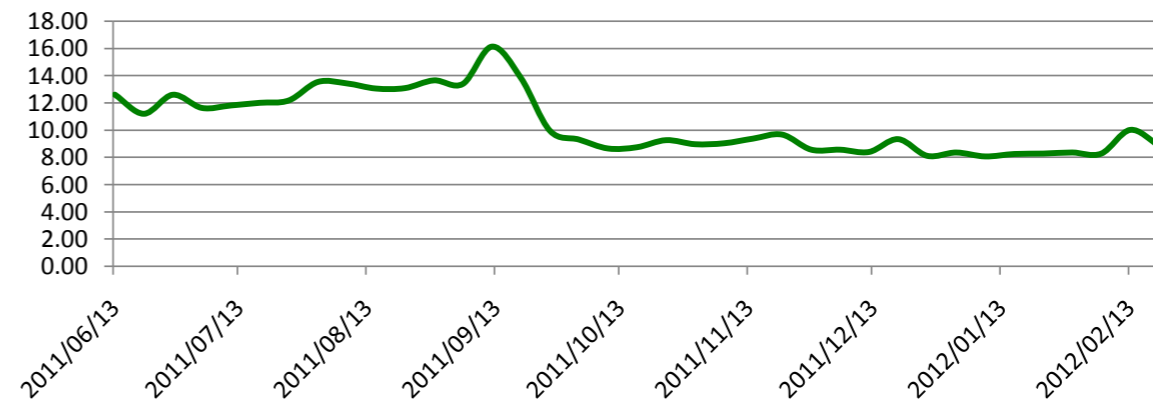
Inside Ratio(%)



Average Turnover per Trade



Average Improvement(bps)



Top 5 Average Turnover of The Week

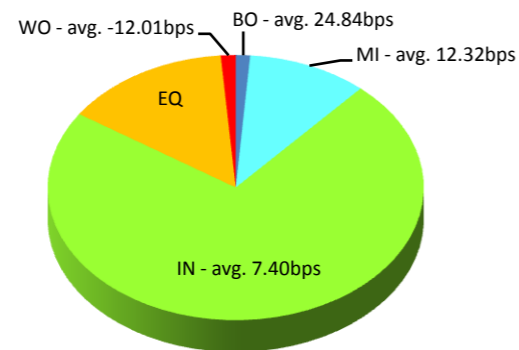
Weekly Total in Week of 20-February-2012

Symbol	Description	Turnover (JPY)	Last Price	Market Shr(%)	Avg Improvement(bps)
8306.T	MUFG	6,650,934,760	416	4.00	8.01
8411.T	MIZUHO	5,608,953,360	135	6.25	24.47
7751.T	CANON	4,459,753,400	3,615	4.95	4.10
7203.T	TOYOTA	4,384,135,500	3,380	2.84	4.19
4502.T	TAKEDAP	3,349,678,700	3,600	6.96	3.51

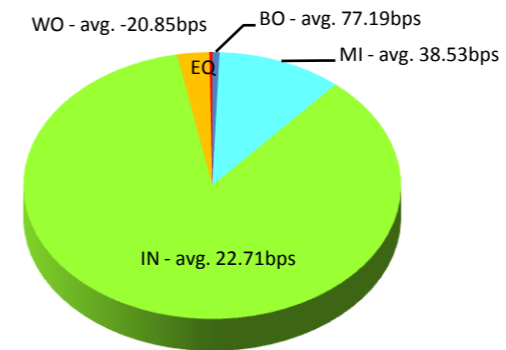
Execution improvement patterns categorized into 5 groups.

- (1) Better Outside ("BO") – better price outside the Primary Exchange spread
- (2) Mid Price ("MI") – better price at Primary Exchange mid price
- (3) Inside BBO ("IN") – better price inside Primary Exchange BBO excluding mid price
- (4) Equal ("EQ") – equal price to Primary Exchange BBO
- (5) Worse ("WO") – worse price than Primary Exchange

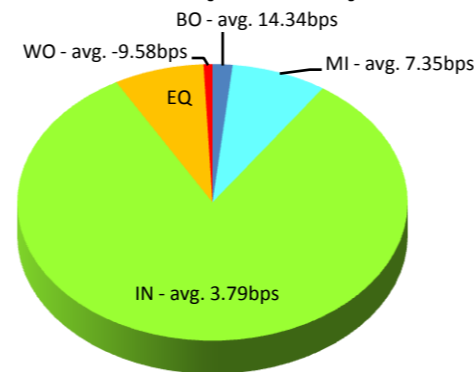
MUFG(8306.T)



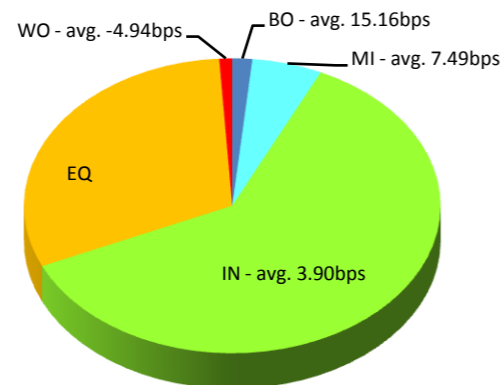
MIZUHO(8411.T)



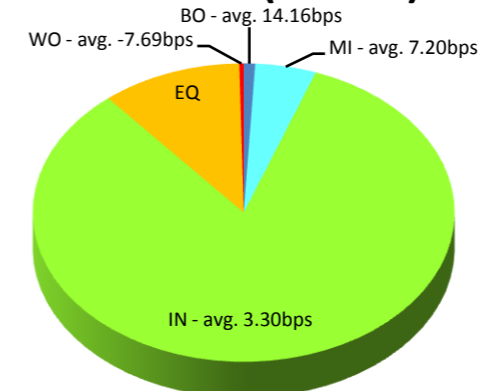
CANON(7751.T)



TOYOTA(7203.T)



TAKEDAP(4502.T)



Note1: Excluded the executions from: before 9AM, lunch break, and after 3PM

Note2: Price improvement is calculated by comparing the execution price against the primary market's best bid for each sell or best offer for each buy at the point of execution and is calculated from the perspective of the Taker side of the trade

Top 5 Average Improvement of The Week

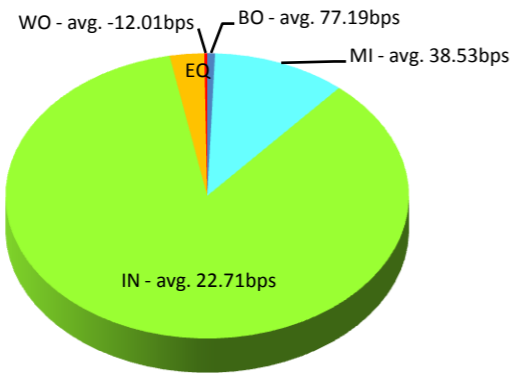
Weekly Total in Week of 20-February-2012

Symbol	Description	Turnover (JPY)	Last Price	Market Shr(%)	Avg Improvement(bps)
8411.T	MIZUHO	5,608,953,360	135	6.25	24.47
7004.T	HIT-ZOS	112,670,850	108	2.57	24.40
5701.T	NP-LMTL	180,870,600	126	3.93	22.49
5406.T	KOBESTL	362,666,700	144	2.85	21.54
7003.T	MTI-E&S	208,735,400	158	3.60	21.50

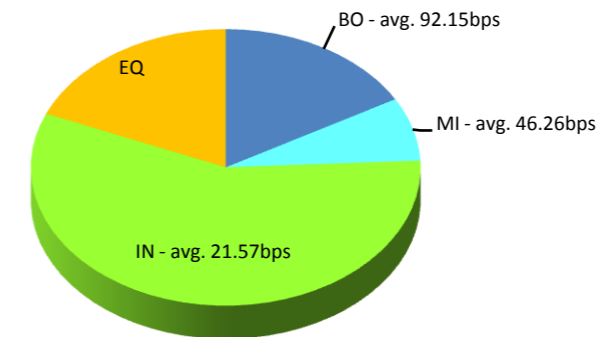
Execution improvement patterns categorized into 5 groups.

- (1) Better Outside ("BO") – better price outside the Primary Exchange spread
- (2) Mid Price ("MI") – better price at Primary Exchange mid price
- (3) Inside BBO ("IN") – better price inside Primary Exchange BBO excluding mid price
- (4) Equal ("EQ") – equal price to Primary Exchange BBO
- (5) Worse ("WO") – worse price than Primary Exchange

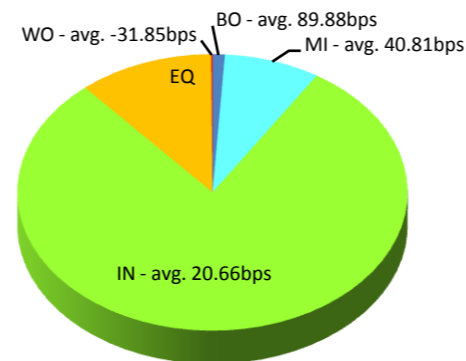
MIZUHO(8411.T)



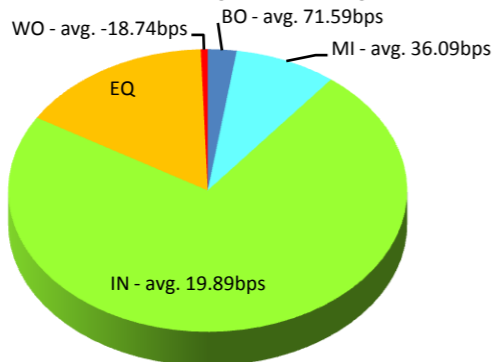
HIT-ZOS(7004.T)



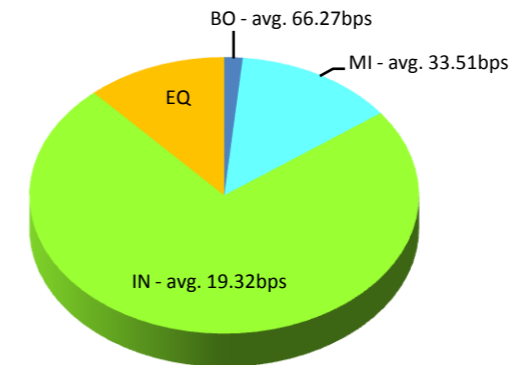
NP-LMTL(5701.T)



KOBESTL(5406.T)



MTI-E&S(7003.T)



Note1: Excluded the executions from: before 9AM, lunch break, and after 3PM

Note2: Price improvement is calculated by comparing the execution price against the primary market's best bid for each sell or best offer for each buy at the point of execution and is calculated from the perspective of the Taker side of the trade

Note3: Weekly Total Turnover > 100 Million JPY

Top 5 ETFs & REITs of The Week

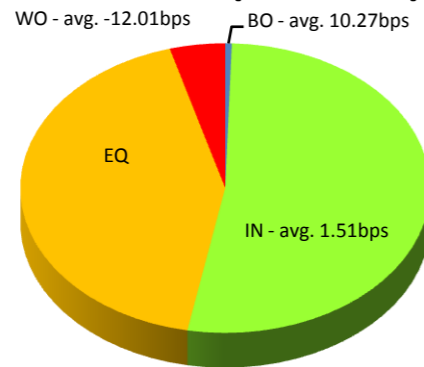
Weekly Total in Week of 20-February-2012

Symbol	Description	Turnover (JPY)	Last Price	Market Shr(%)	Avg Improvement(bps)
1321.OS	225FUND	445,234,223	9,780	2.44	1.51
1306.T	TOPIX F	223,972,693	848	2.21	3.93
1320.OS	ETF225	87,890,391	9,760	1.67	1.95
1330.T	IDXF225	70,885,310	9,800	1.00	0.69
8951.T	NBF	37,333,400	739,000	0.54	2.69

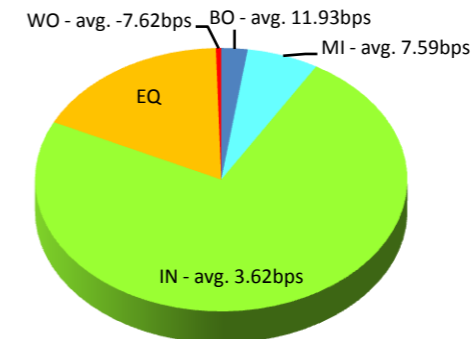
Execution improvement patterns categorized into 5 groups.

- (1) Better Outside ("BO") – better price outside the Primary Exchange spread
- (2) Mid Price ("MI") – better price at Primary Exchange mid price
- (3) Inside BBO ("IN") – better price inside Primary Exchange BBO excluding mid price
- (4) Equal ("EQ") – equal price to Primary Exchange BBO
- (5) Worse ("WO") – worse price than Primary Exchange

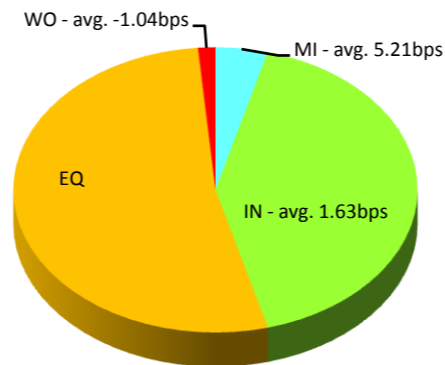
225FUND(1321.OS)



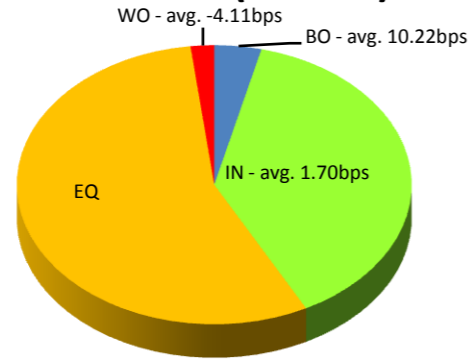
TOPIX F(1306.T)



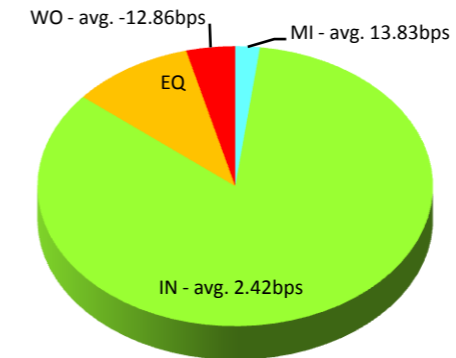
ETF225(1320.OS)



IDXF225(1330.T)



NBF(8951.T)



Note1: Excluded the executions from before 9AM, lunch break, and after 3PM

Note2: Price improvement is calculated by comparing the execution price against the primary market's best bid for each sell or best offer for each buy at the point of execution and is calculated from the perspective of the Taker side of the trade