

Japannext PTS Weekly Statistics

16 January 2012

Registration as a Financial Instrument Business Operator under the Financial Instruments and Exchange Act (FIEA) (including authorization to operate a Proprietary Trading System (PTS)),
Director of Kanto Local Finance Bureau (Kinsho) No.45

TEL: +81-3-4577-4040

FAX: +81-3-3261-1702

MAIL: ptsbiz@japannext.co.jp

WEB Japanese:

<http://www.japannext.co.jp/ja>

English: <http://www.japannext.co.jp/en>

Disclaimer

Information provided is for reference purposes only and does not constitute financial product advice nor is constituted as an offer to sell or solicitation to buy any security. The ownership and intellectual property rights of this information are solely and exclusively belong to SBI Japannext Co.,Ltd. ("SBIJ"). According users are permitted to access and use the Information for their own personal, non-commercial and internal-use-only. Although SBIJ has made every effort to ensure the accuracy of the information as at the date of publication, SBIJ does not give any warranty as to the accuracy, reliability or completeness of the information. To the extent permitted by law, SBIJ and its employees, officers and contractors shall not be liable for any loss or damage arising in any way (including by way of negligence) from or in connection with any information provided or omitted or from anyone acting or refraining to act in reliance on this information.

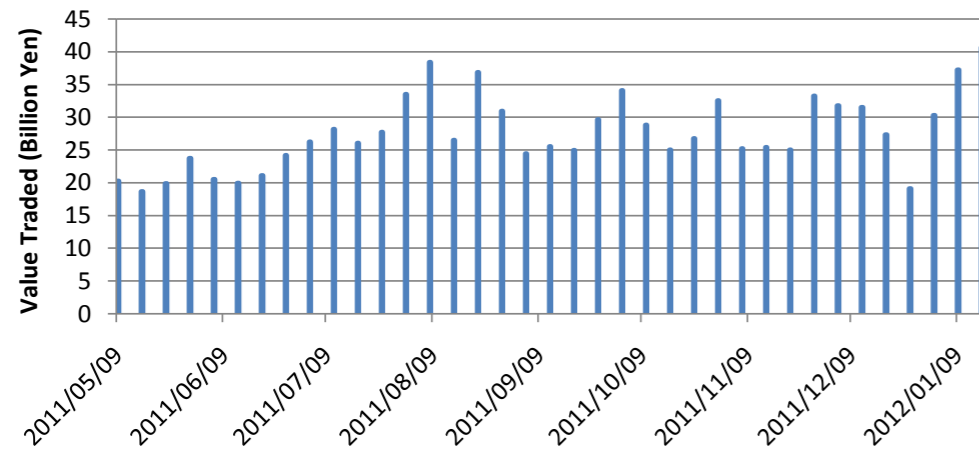
Daily Average Statistics of The Week

Daily Average in Week of 16-January-2012

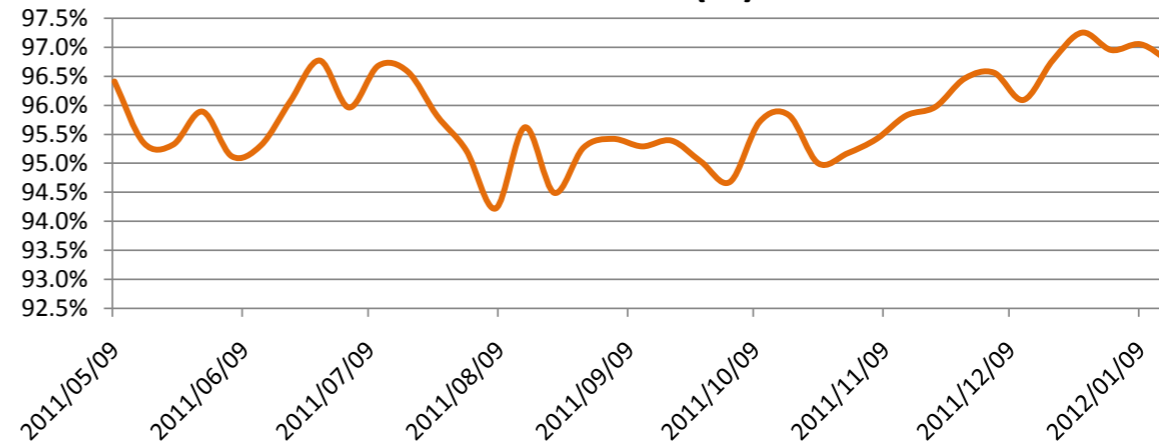
	# of Shares Traded	Turnover (JPY)	Universe	No of Trades	% of Inside	Avg Improvement(bps)
Total	68,614,715	40,613,916,648	840	105,780	96.75%	8.24
Large CAP	35,893,557	25,485,212,132	100	47,835	96.71%	7.80
Mid CAP	28,072,654	13,313,774,088	392	48,324	96.89%	8.11
Small CAP	4,648,503	1,814,930,428	348	9,620	96.26%	12.41

*Price improvement is calculated by comparing the execution price against the primary market's best bid for each sell or best offer for each buy at the point of execution and is calculated from the perspective of the Taker side of the trade

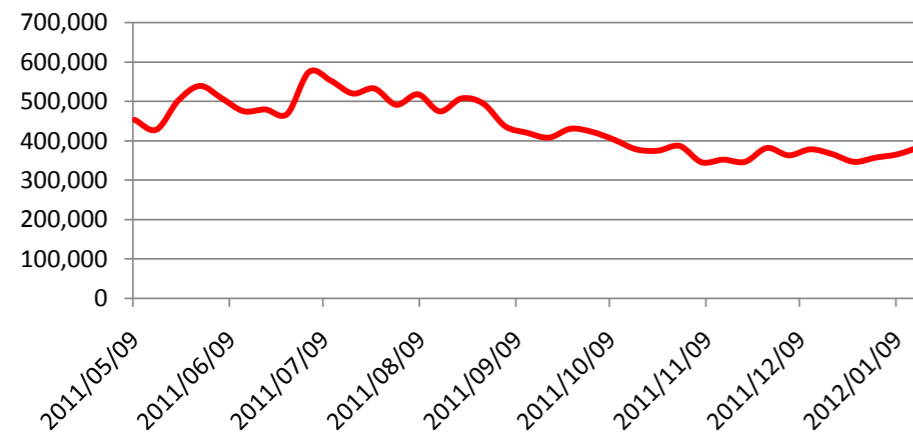
Average Turnover



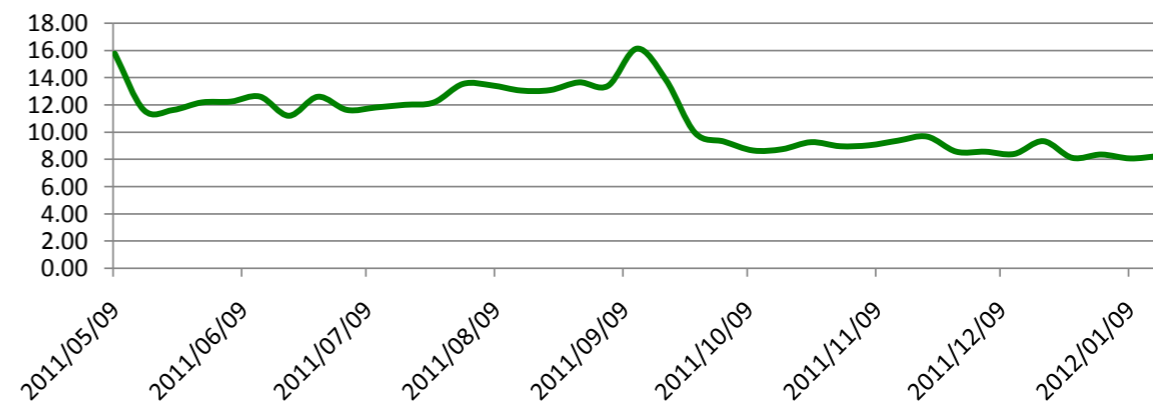
Inside Ratio(%)



Average Turnover per Trade



Average Improvement(bps)



Top 5 Average Turnover of The Week

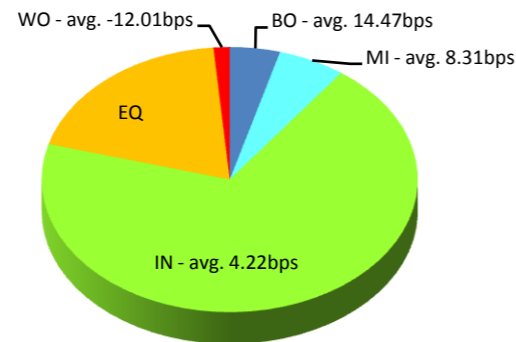
Weekly Total in Week of 16-January-2012

Symbol	Description	Turnover (JPY)	Last Price	Market Shr(%)	Avg Improvement(bps)
7201.T	NISSAN	6,666,279,150	721	8.96	4.53
8306.T	MUFG	4,974,257,760	350	5.66	9.91
8411.T	MIZUHO	4,622,267,740	115	8.15	30.84
9432.T	NTT	3,655,092,050	3,820	8.64	3.89
6954.T	FANUC	3,551,699,300	13,050	4.18	3.93

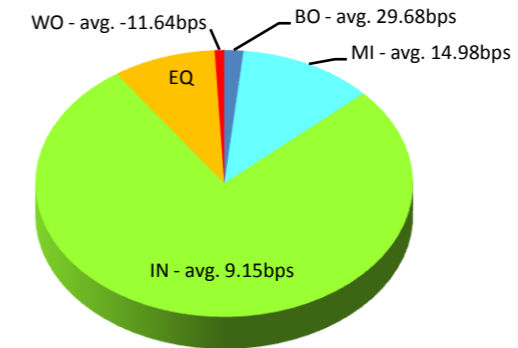
Execution improvement patterns categorized into 5 groups.

- (1) Better Outside ("BO") – better price outside the Primary Exchange spread
- (2) Mid Price ("MI") – better price at Primary Exchange mid price
- (3) Inside BBO ("IN") – better price inside Primary Exchange BBO excluding mid price
- (4) Equal ("EQ") – equal price to Primary Exchange BBO
- (5) Worse ("WO") – worse price than Primary Exchange

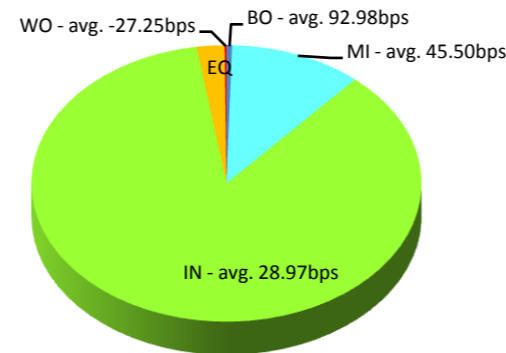
NISSAN(7201.T)



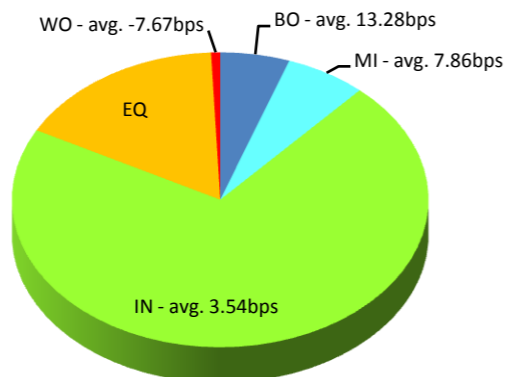
MUFG(8306.T)



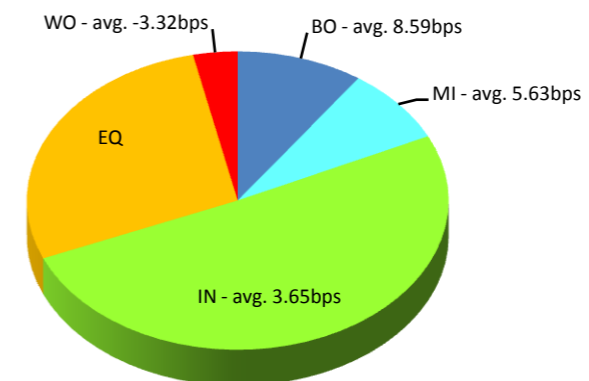
MIZUHO(8411.T)



NTT(9432.T)



FANUC(6954.T)



Note1: Excluded the executions from: before 9AM, lunch break, and after 3PM

Note2: Price improvement is calculated by comparing the execution price against the primary market's best bid for each sell or best offer for each buy at the point of execution and is calculated from the perspective of the Taker side of the trade

Top 5 Average Improvement of The Week

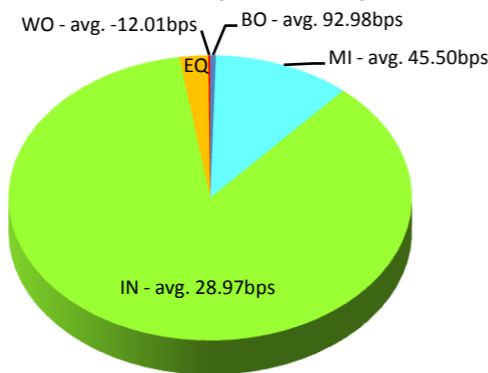
Weekly Total in Week of 16-January-2012

Symbol	Description	Turnover (JPY)	Last Price	Market Shr(%)	Avg Improvement(bps)
8411.T	MIZUHO	4,622,267,740	115	8.15	30.84
5407.T	NISINST	116,178,500	125	7.06	29.12
9107.T	K-LINE	341,880,000	134	5.48	24.08
5406.T	KOBESTL	486,865,900	131	8.81	24.44
7004.T	HIT-ZOS	106,879,250	113	3.53	25.05

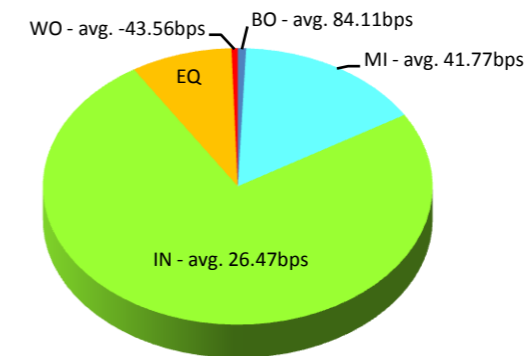
Execution improvement patterns categorized into 5 groups.

- (1) Better Outside ("BO") – better price outside the Primary Exchange spread
- (2) Mid Price ("MI") – better price at Primary Exchange mid price
- (3) Inside BBO ("IN") – better price inside Primary Exchange BBO excluding mid price
- (4) Equal ("EQ") – equal price to Primary Exchange BBO
- (5) Worse ("WO") – worse price than Primary Exchange

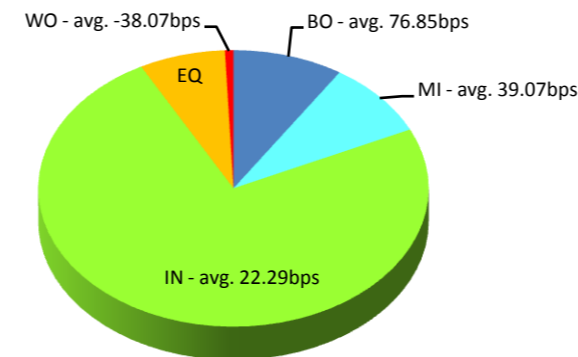
MIZUHO(8411.T)



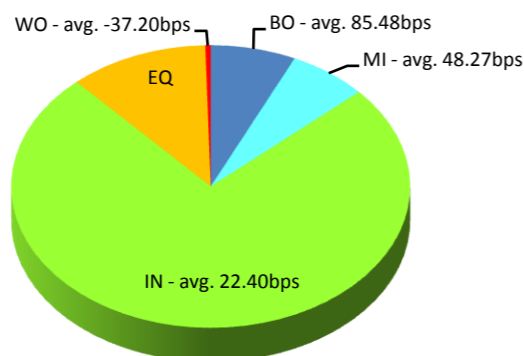
NISINST(5407.T)



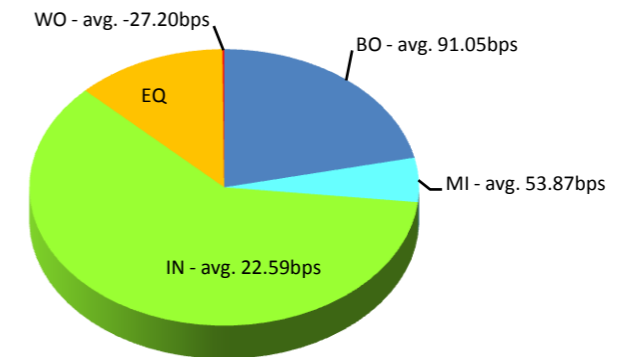
K-LINE(9107.T)



KOBESTL(5406.T)



HIT-ZOS(7004.T)



Note1: Excluded the executions from: before 9AM, lunch break, and after 3PM

Note2: Price improvement is calculated by comparing the execution price against the primary market's best bid for each sell or best offer for each buy at the point of execution and is calculated from the perspective of the Taker side of the trade

Note3: Weekly Total Turnover > 100 Million JPY

Top 5 ETFs & REITs of The Week

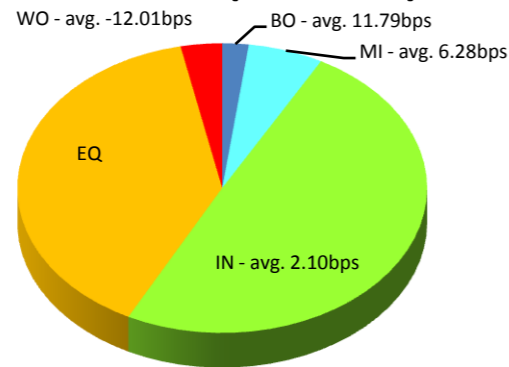
Weekly Total in Week of 16-January-2012

Symbol	Description	Turnover (JPY)	Last Price	Market Shr(%)	Avg Improvement(bps)
1321.OS	225FUND	479,288,621	8,860	3.08	2.55
1306.T	TOPIX F	456,430,201	768	4.91	2.97
1330.T	IDXF225	84,374,410	8,930	0.65	2.01
1320.OS	ETF225	71,964,321	8,860	1.91	0.89
8951.T	NBF	36,853,500	666,000	0.38	5.69

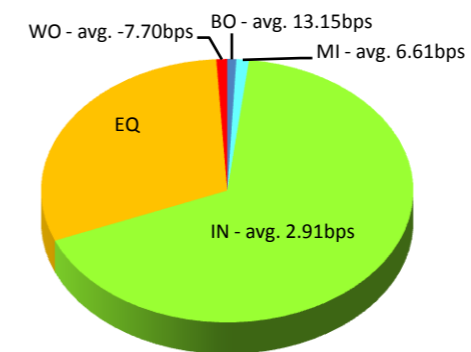
Execution improvement patterns categorized into 5 groups.

- (1) Better Outside ("BO") – better price outside the Primary Exchange spread
- (2) Mid Price ("MI") – better price at Primary Exchange mid price
- (3) Inside BBO ("IN") – better price inside Primary Exchange BBO excluding mid price
- (4) Equal ("EQ") – equal price to Primary Exchange BBO
- (5) Worse ("WO") – worse price than Primary Exchange

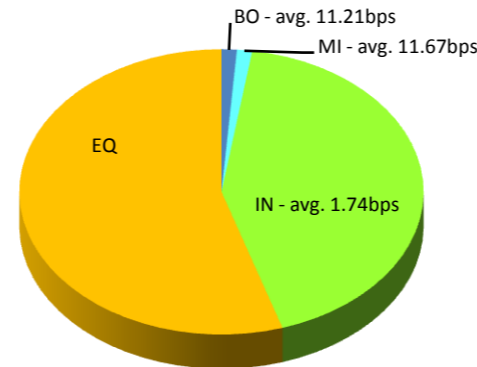
225FUND(1321.OS)



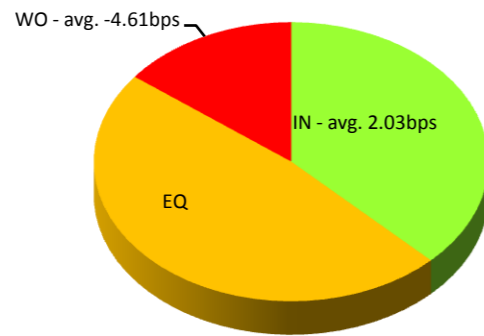
TOPIX F(1306.T)



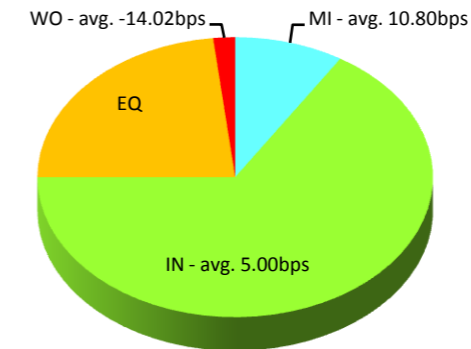
IDXF225(1330.T)



ETF225(1320.OS)



NBF(8951.T)



Note1: Excluded the executions from before 9AM, lunch break, and after 3PM

Note2: Price improvement is calculated by comparing the execution price against the primary market's best bid for each sell or best offer for each buy at the point of execution and is calculated from the perspective of the Taker side of the trade