

Japannext PTS Weekly Statistics

09 January 2012

Registration as a Financial Instrument Business Operator under the Financial Instruments and Exchange Act (FIEA) (including authorization to operate a Proprietary Trading System (PTS)),
Director of Kanto Local Finance Bureau (Kinsho) No.45

TEL: +81-3-4577-4040

FAX: +81-3-3261-1702

MAIL: ptsbiz@japannext.co.jp

WEB Japanese:

<http://www.japannext.co.jp/ja>

English: <http://www.japannext.co.jp/en>

Disclaimer

Information provided is for reference purposes only and does not constitute financial product advice nor is constituted as an offer to sell or solicitation to buy any security. The ownership and intellectual property rights of this information are solely and exclusively belong to SBI Japannext Co.,Ltd. ("SBIJ"). According users are permitted to access and use the Information for their own personal, non-commercial and internal-use-only. Although SBIJ has made every effort to ensure the accuracy of the information as at the date of publication, SBIJ does not give any warranty as to the accuracy, reliability or completeness of the information. To the extent permitted by law, SBIJ and its employees, officers and contractors shall not be liable for any loss or damage arising in any way (including by way of negligence) from or in connection with any information provided or omitted or from anyone acting or refraining to act in reliance on this information.

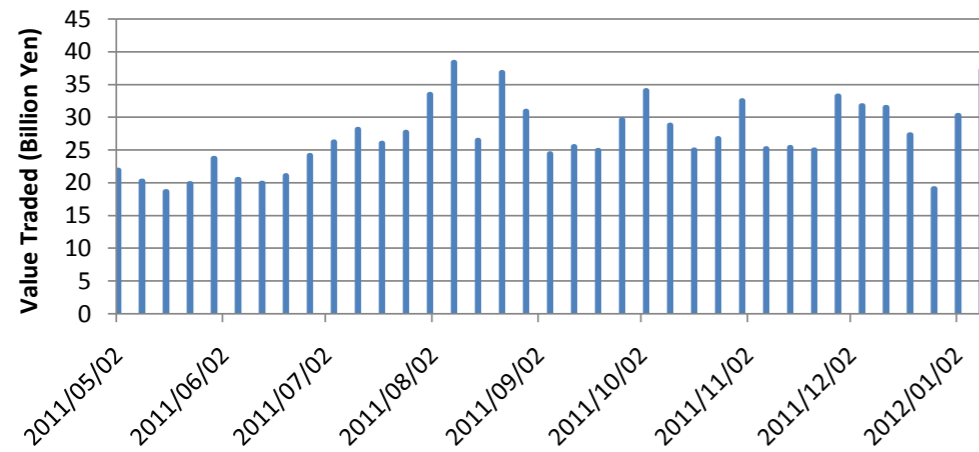
Daily Average Statistics of The Week

Daily Average in Week of 09-January-2012

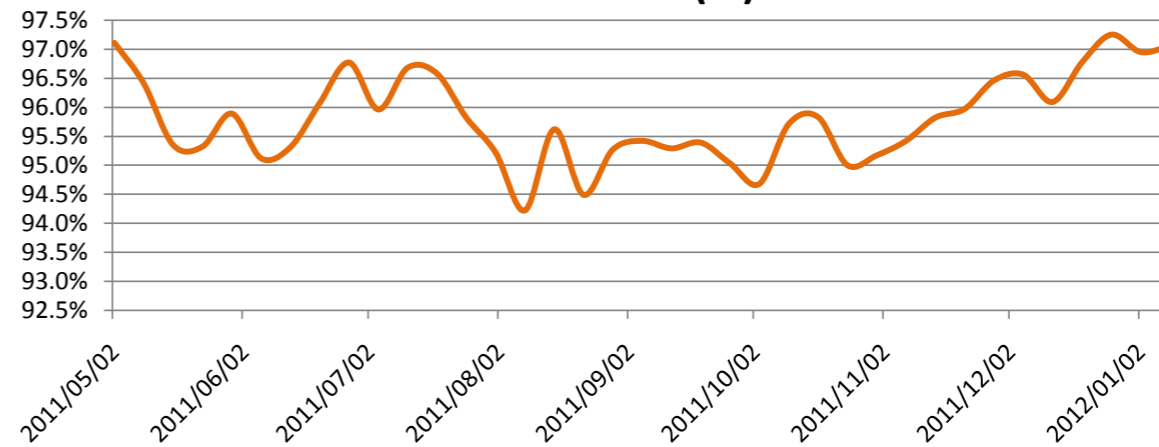
	# of Shares Traded	Turnover (JPY)	Universe	No of Trades	% of Inside	Avg Improvement(bps)
Total	60,407,515	37,195,872,980	804	101,727	97.05%	8.06
Large CAP	30,548,337	22,992,829,346	100	46,444	97.05%	7.36
Mid CAP	25,736,782	12,726,026,748	391	46,599	97.18%	8.01
Small CAP	4,122,397	1,477,016,886	313	8,685	96.35%	14.12

*Price improvement is calculated by comparing the execution price against the primary market's best bid for each sell or best offer for each buy at the point of execution and is calculated from the perspective of the Taker side of the trade

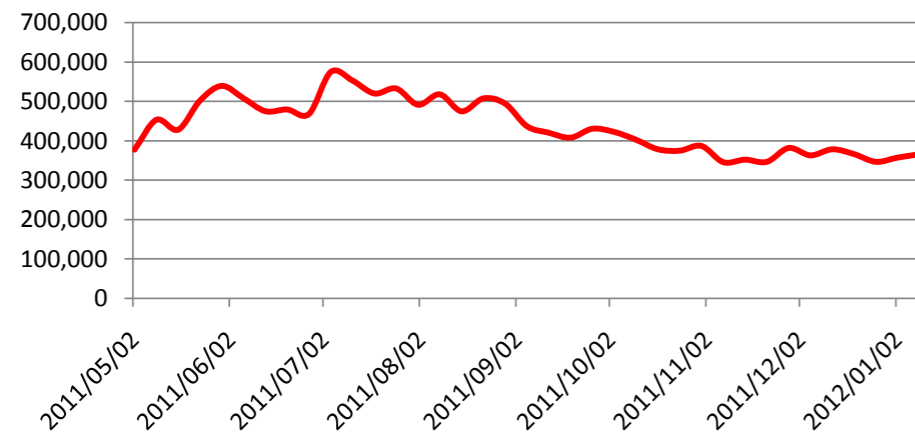
Average Turnover



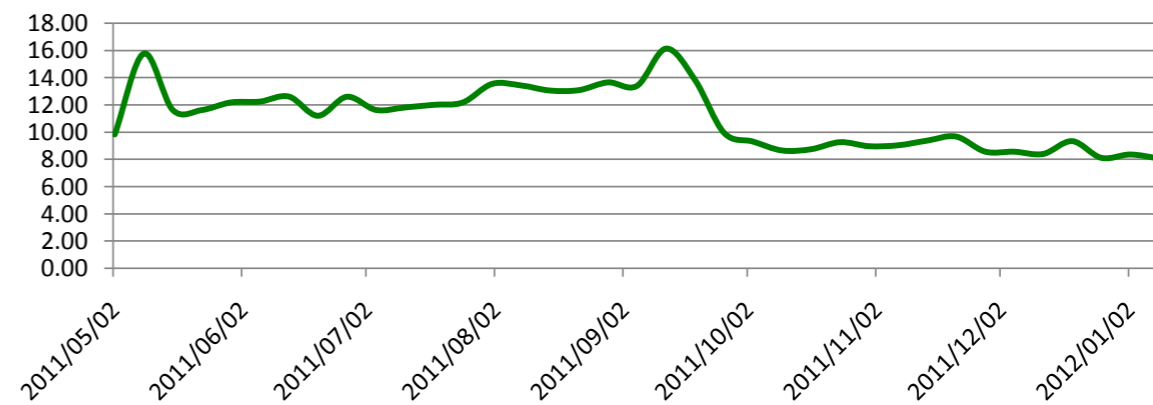
Inside Ratio(%)



Average Turnover per Trade



Average Improvement(bps)



Top 5 Average Turnover of The Week

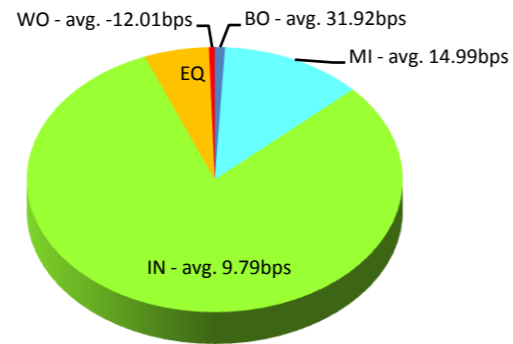
Weekly Total in Week of 09-January-2012

Symbol	Description	Turnover (JPY)	Last Price	Market Shr(%)	Avg Improvement(bps)
8306.T	MUFG	4,087,330,050	334	8.97	10.48
7201.T	NISSAN	3,938,048,240	686	10.52	4.99
4502.T	TAKEDAP	3,729,941,000	3,215	9.18	4.06
7751.T	CANON	3,492,807,450	3,355	7.44	4.66
2914.T	JT	3,310,588,050	399,000	6.72	4.95

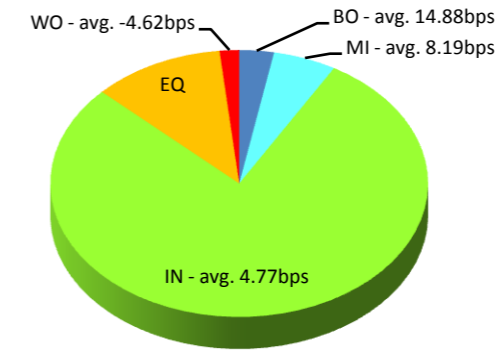
Execution improvement patterns categorized into 5 groups.

- (1) **Better Outside ("BO")** – better price outside the Primary Exchange spread
- (2) **Mid Price ("MI")** – better price at Primary Exchange mid price
- (3) **Inside BBO ("IN")** – better price inside Primary Exchange BBO excluding mid price
- (4) **Equal ("EQ")** – equal price to Primary Exchange BBO
- (5) **Worse ("WO")** – worse price than Primary Exchange

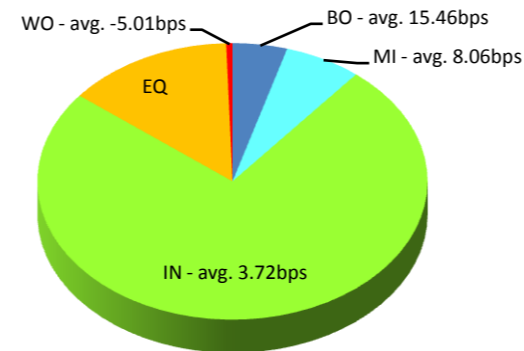
MUFG(8306.T)



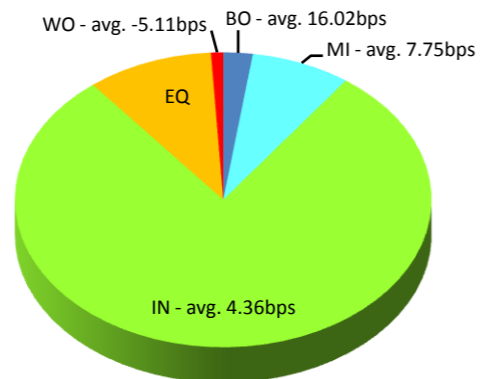
NISSAN(7201.T)



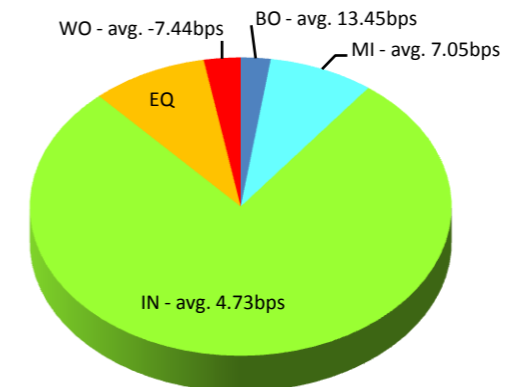
TAKEDAP(4502.T)



CANON(7751.T)



JT(2914.T)



Note1: Excluded the executions from: before 9AM, lunch break, and after 3PM

Note2: Price improvement is calculated by comparing the execution price against the primary market's best bid for each sell or best offer for each buy at the point of execution and is calculated from the perspective of the Taker side of the trade

Top 5 Average Improvement of The Week

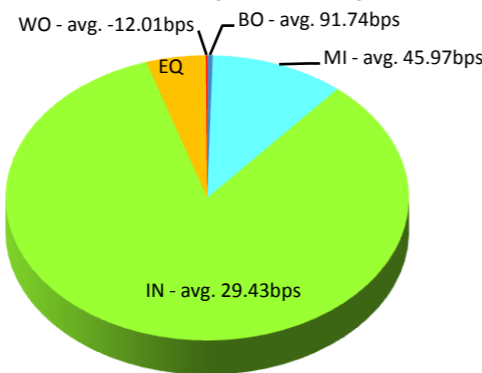
Weekly Total in Week of 09-January-2012

Symbol	Description	Turnover (JPY)	Last Price	Market Shr(%)	Avg Improvement(bps)
8411.T	MIZUHO	2,428,960,730	109	8.06	31.31
5406.T	KOBESTL	134,271,700	122	6.31	28.18
7003.T	MTI-E&S	134,252,100	123	11.12	25.21
9107.T	K-LINE	426,142,400	131	6.32	24.76
2768.T	SOJITZ	196,837,550	124	9.13	23.29

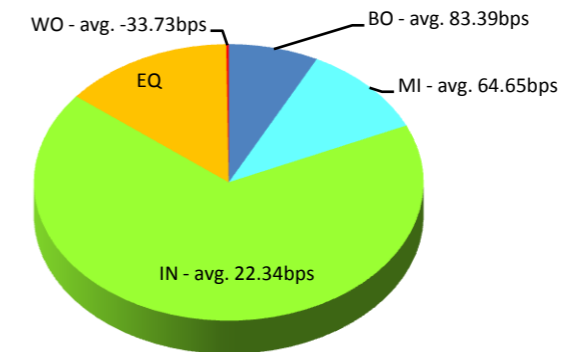
Execution improvement patterns categorized into 5 groups.

- (1) Better Outside ("BO") – better price outside the Primary Exchange spread
- (2) Mid Price ("MI") – better price at Primary Exchange mid price
- (3) Inside BBO ("IN") – better price inside Primary Exchange BBO excluding mid price
- (4) Equal ("EQ") – equal price to Primary Exchange BBO
- (5) Worse ("WO") – worse price than Primary Exchange

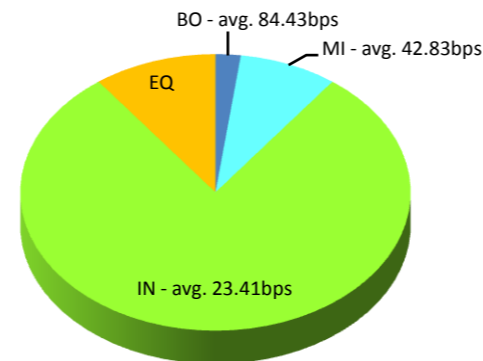
MIZUHO(8411.T)



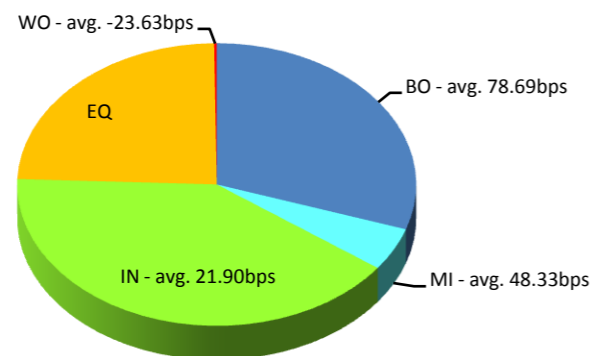
KOBESTL(5406.T)



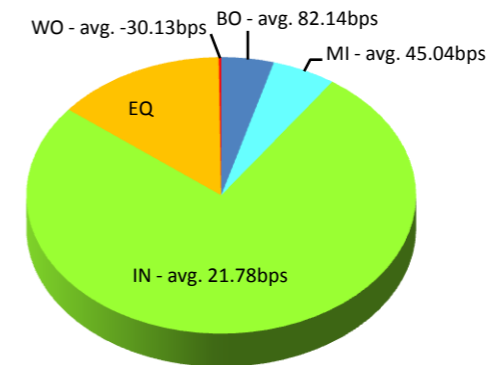
MTI-E&S(7003.T)



K-LINE(9107.T)



SOJITZ(2768.T)



Note1: Excluded the executions from: before 9AM, lunch break, and after 3PM

Note2: Price improvement is calculated by comparing the execution price against the primary market's best bid for each sell or best offer for each buy at the point of execution and is calculated from the perspective of the Taker side of the trade

Note3: Weekly Total Turnover > 100 Million JPY

Top 5 ETFs & REITs of The Week

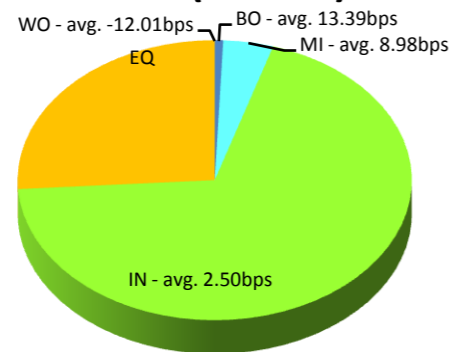
Weekly Total in Week of 09-January-2012

Symbol	Description	Turnover (JPY)	Last Price	Market Shr(%)	Avg Improvement(bps)
1306.T	TOPIX F	123,212,234	747	3.27	2.86
1321.OS	225FUND	60,219,734	8,630	0.85	1.67
1330.T	IDXF225	48,342,610	8,640	1.16	1.50
1320.OS	ETF225	45,984,947	8,610	6.97	1.04
8951.T	NBF	18,137,300	651,000	0.48	2.19

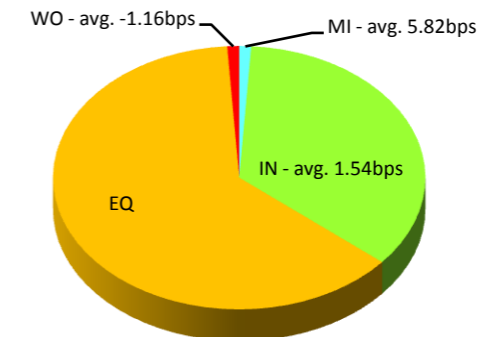
Execution improvement patterns categorized into 5 groups.

- (1) **Better Outside ("BO")** – better price outside the Primary Exchange spread
- (2) **Mid Price ("MI")** – better price at Primary Exchange mid price
- (3) **Inside BBO ("IN")** – better price inside Primary Exchange BBO excluding mid price
- (4) **Equal ("EQ")** – equal price to Primary Exchange BBO
- (5) **Worse ("WO")** – worse price than Primary Exchange

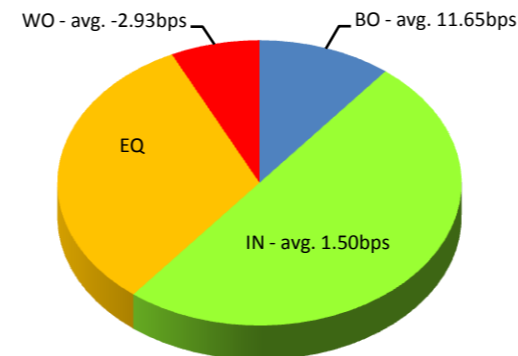
TOPIX F(1306.T)



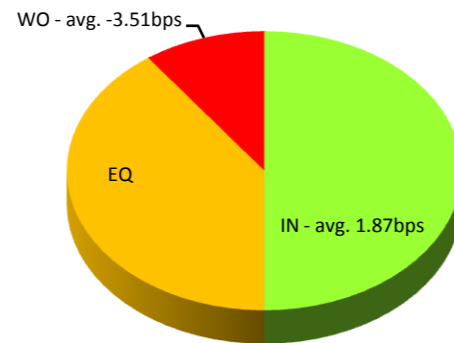
225FUND(1321.OS)



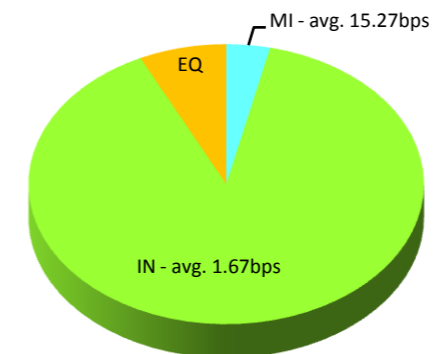
IDXF225(1330.T)



ETF225(1320.OS)



NBF(8951.T)



Note1: Excluded the executions from before 9AM, lunch break, and after 3PM

Note2: Price improvement is calculated by comparing the execution price against the primary market's best bid for each sell or best offer for each buy at the point of execution and is calculated from the perspective of the Taker side of the trade