

# Japannext PTS Monthly Statistics

## December 2012

Registration as a Financial Instrument Business Operator under the Financial Instruments and Exchange Act (FIEA) (including authorization to operate a Proprietary Trading System (PTS)),  
Director of Kanto Local Finance Bureau (Kinsho) No.45

TEL: +81-3-4577-4040 FAX:+81-3-3261-1702

WEB Japanese: <http://www.japannext.co.jp/ja>

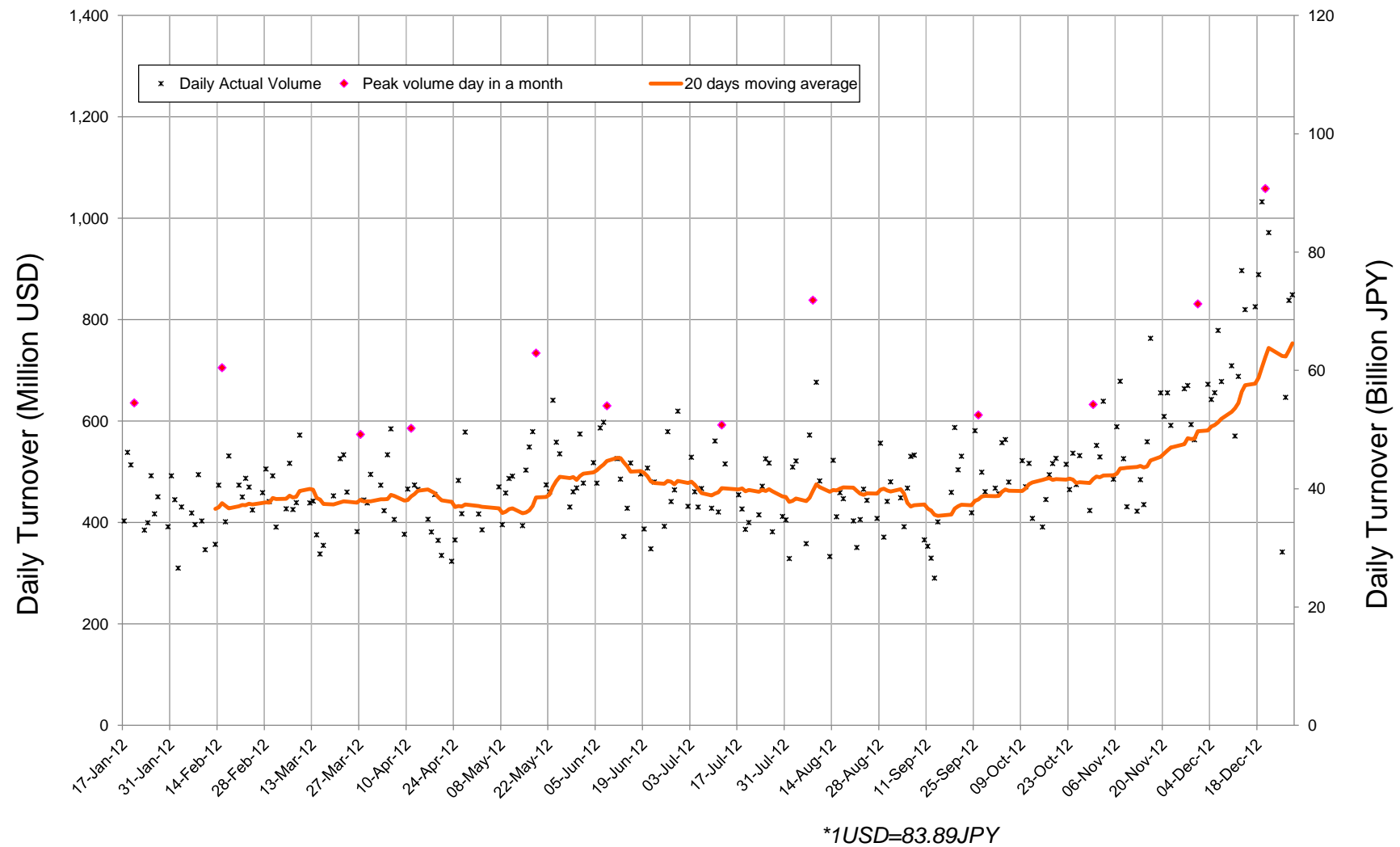
MAIL: [ptsbiz@japannext.co.jp](mailto:ptsbiz@japannext.co.jp)

English: <http://www.japannext.co.jp/en>

### Disclaimer

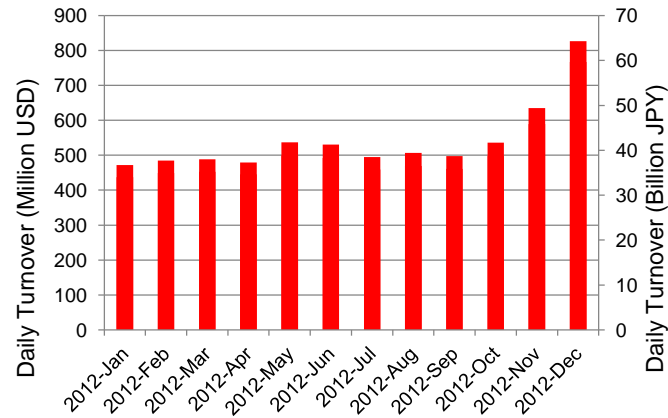
Information provided is for reference purposes only and does not constitute financial product advice nor is constituted as an offer to sell or solicitation to buy any security. The ownership and intellectual property rights of this information are solely and exclusively belong to SBI Japannext Co.,Ltd.( "SBIJ") . According users are permitted to access and use the Information for their own personal, non-commercial and internal-use-only. Although SBIJ has made every effort to ensure the accuracy of the information as at the date of publication, SBIJ does not give any warranty as to the accuracy, reliability or completeness of the information. To the extent permitted by law, SBIJ and its employees, officers and contractors shall not be liable for any loss or damage arising in any way (including by way of negligence) from or in connection with any information provided or omitted or from anyone acting or refraining to act in reliance on this information.

# Daily Turnover of Daytime Session

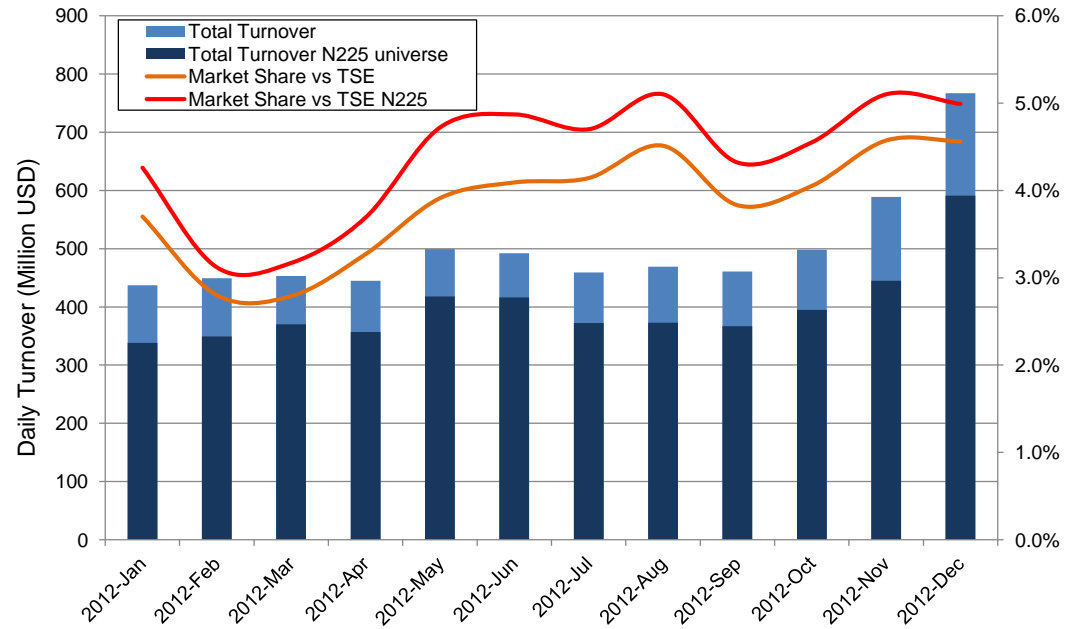


# Summary of Daytime Session by Month

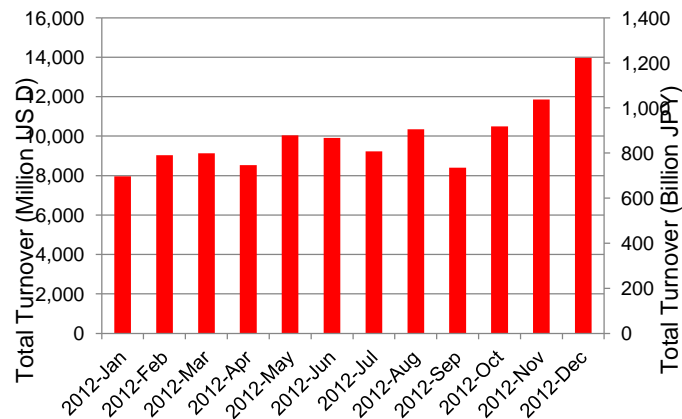
Average Daily Turnover by Month



Market Share vs TSE Turnover



Total Turnover by Month

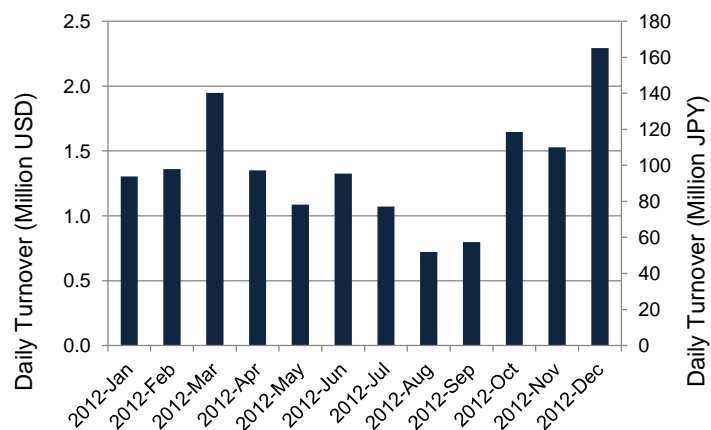


	12-Feb	12-Mar	12-Apr	12-May	12-Jun	12-Jul	12-Aug	12-Sep	12-Oct	12-Nov	12-Dec	
Value	449	453	445	499	492	459	469	461	498	589	767	(MM USD)
(N225)	349	370	357	418	416	372	373	367	395	445	591	(MM USD)
Share	2.80%	2.79%	3.27%	3.91%	4.09%	4.14%	4.51%	3.83%	4.05%	4.57%	4.56%	
(N225)	3.12%	3.17%	3.69%	4.72%	4.87%	4.70%	5.10%	4.32%	4.55%	5.10%	4.99%	
Improve	8.59	9.12	8.97	8.92	9.83	10.03	10.79	11.51	11.82	11.31	10.28	(N225 BPS)
TSE Spread	25.62	25.70	25.72	25.87	26.46	27.17	30.17	30.28	29.73	28.66	26.96	(N225 BPS)

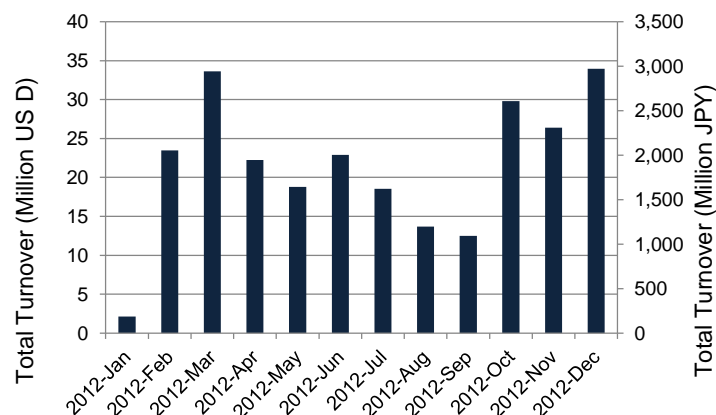
\*1USD=83.89JPY

# Summary of Nighttime Session by Month

**Average Daily Turnover by Month**



**Total Turnover by Month**



**Turnover Top 30 Names in Nighttime Session of Month**

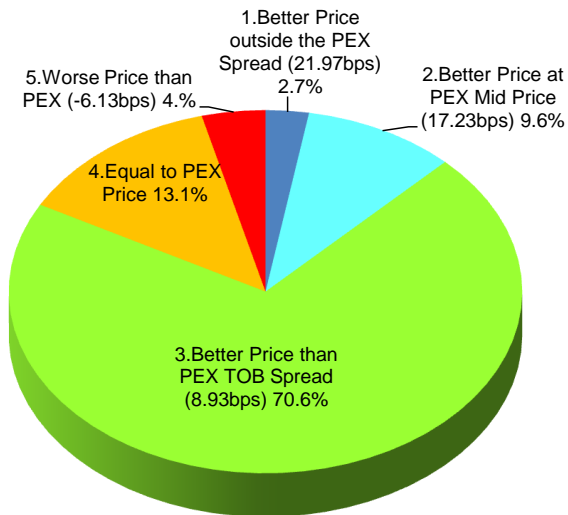
Rank	Symbol	Description	Turnover (USD)	Market Share vs PrimaryEX(%)
1	8411	MIZUHO	5,287,773	0.09
2	4583	CHIOME	3,905,250	1.12
3	6753	SHARP	2,734,256	0.03
4	2931	EUGLENA	2,415,985	0.93
5	9501	TEPCO	1,775,978	0.06
6	6072	JIBANNET	1,766,590	1.71
7	8306	MUFG	817,006	0.01
8	8515	AIFUL	747,113	0.02
9	7751	CANON	696,454	0.01
10	1821	MS-CON	532,636	0.03
11	7203	TOYOTA	502,725	0.01
12	7164	ZENKOKHO	443,154	0.10
13	6758	SONY	442,589	0.01
14	8316	SMFG	388,388	0.01
15	7267	HONDA	377,383	0.01
16	9697	CAPCOM	371,642	0.11
17	2160	GNI	358,595	0.14
18	7974	NINTEND	353,208	0.02
19	6752	PANASNIC	329,270	0.01
20	3666	TECNSJPN	300,896	0.12
21	9984	SOFTBNK	285,898	0.01
22	8604	NOMRAHD	284,287	0.00
23	2370	MEDINET	244,128	0.43
24	7777	3DMATRIX	243,253	0.09
25	4751	CYBER A	243,131	0.03
26	3666	TECNSJPN	300,896	0.12
27	9984	SOFTBNK	285,898	0.01
28	8604	NOMRAHD	284,287	0.00
29	2370	MEDINET	244,128	0.43
30	7777	3DMATRIX	243,253	0.09

\*1USD=83.89JPY

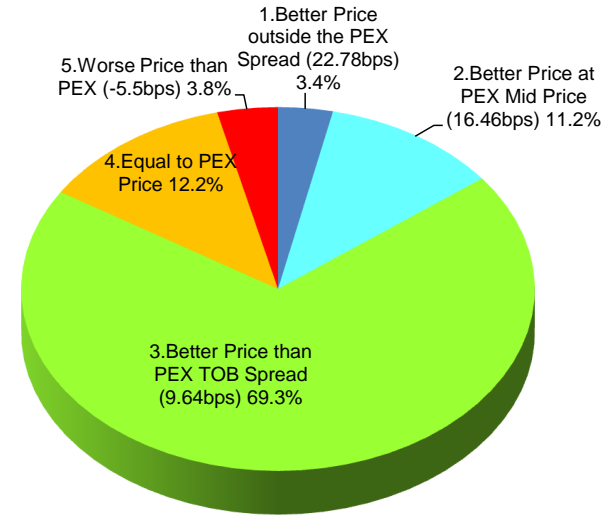
# Daytime Session Execution

## Nikkei 225 universe in December-2012

PEX : Primary Exchange



**BUY Improvement**



**SELL Improvement**

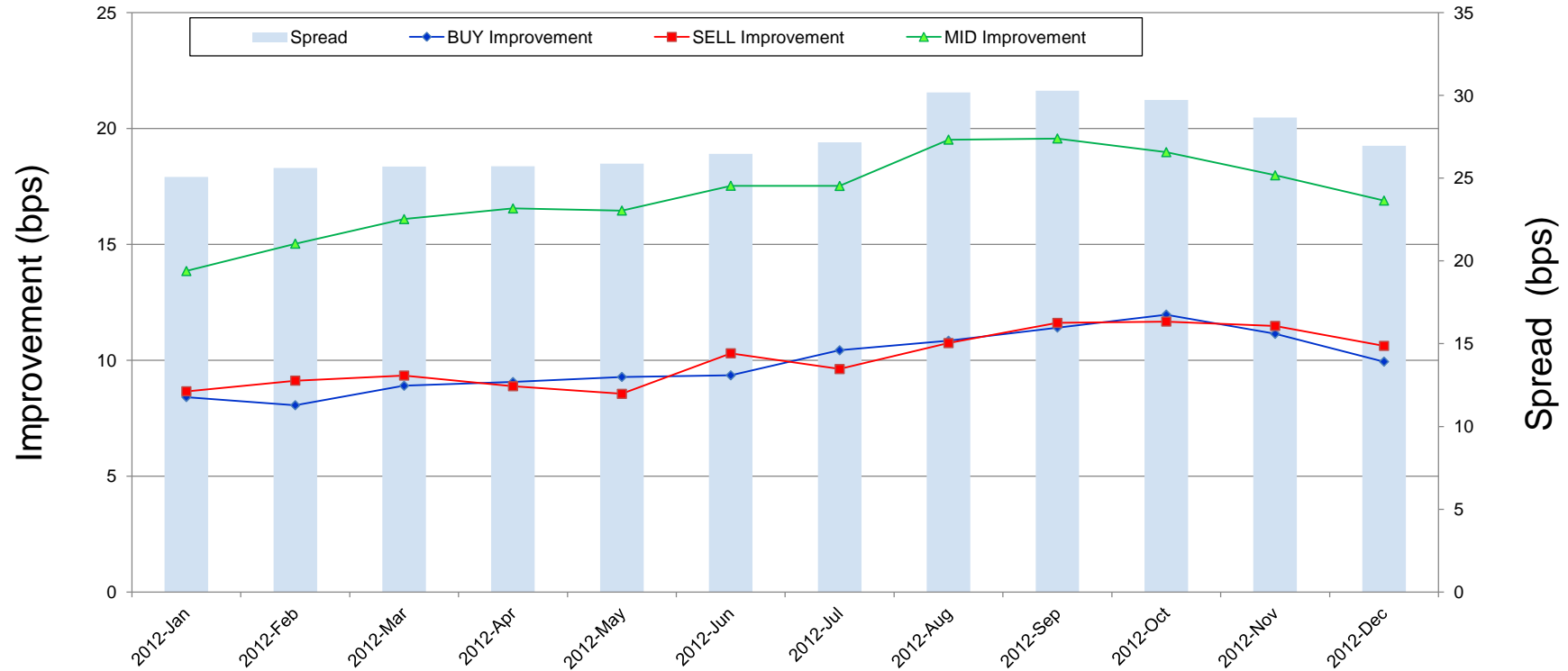
Note1: Excluded the executions from: before 9AM, lunch break, and after 3PM

Note2: Price improvement is calculated by comparing the execution price against the primary market's best bid for each sell or best offer for each buy at the point of execution and is calculated from the perspective of the Taker side of the trade

Note3: The chart% is based on number of trades executed

# Improvement of Execution

## Nikkei 225 universe in December-2012



Note1: Excluded the executions from: before 9AM, lunch break, and after 3PM

Note2: Price improvement is calculated by comparing the execution price against the primary market's best bid for each sell or best offer for each buy at the point of execution and is calculated from the perspective of the Taker side of the trade

## Turnover Top 50 Names in Daytime Session

### Ranking for December-2012

Rank	Symbol	Description	Turnover (Million USD)	Market Share vs PrimaryEX(%)
1	7203	TOYOTA	573.80	7.68
2	8411	MIZUHO	419.84	7.53
3	8306	MUFG	395.86	5.47
4	9432	NTT	201.74	7.98
5	7751	CANON	191.64	3.92
6	7201	NISSAN	187.70	5.32
7	9984	SOFTBNK	183.79	3.52
8	6501	HITACHI	181.46	6.84
9	8316	SMFG	181.21	3.41
10	7267	HONDA	179.54	3.57
11	6758	SONY	171.16	5.07
12	6954	FANUC	169.66	4.37
13	6301	KOMATSU	160.17	5.35
14	9433	KDDI	158.61	8.48
15	4063	SINETUC	146.66	8.29
16	8604	NOMRAHD	145.01	2.34
17	6502	TOSHIBA	137.73	5.42
18	9983	FASTRET	137.70	3.65
19	8802	MTB-EST	135.01	5.72
20	6753	SHARP	131.21	1.50
21	4502	TAKEDAP	129.10	7.09
22	8058	MITBISI	125.38	4.54
23	8031	mitsui	118.55	5.16
24	9020	JR EAST	117.66	8.41
25	6752	PANASNIC	114.64	3.08

\*1USD=83.89JPY

Rank	Symbol	Description	Turnover (Million USD)	Market Share vs PrimaryEX(%)
26	8002	MARBENI	114.15	7.76
27	4503	ASTELLAS	112.11	6.45
28	6971	KYOCERA	111.01	5.93
29	7270	FUJIHVV	110.56	7.88
30	7752	RICOH	110.13	5.91
31	5401	NSTEELSM	109.07	5.51
32	6988	NTTODEN	107.25	9.13
33	7261	MAZDA	104.75	5.95
34	8801	MTI-FU	103.80	5.72
35	6326	KUBOTA	99.97	9.85
36	8001	ITOCHU	96.84	6.14
37	2914	JT	94.14	4.79
38	8591	ORIX	92.59	6.05
39	7011	MHI	90.76	5.89
40	8309	SMTRUST	88.48	6.85
41	6503	MELCO	83.04	6.02
42	8035	TKOELCN	83.01	6.39
43	5201	ASA-GLS	82.22	7.45
44	8601	DAIWASG	81.81	5.68
45	8308	RESONA	81.70	6.48
46	9202	ANA	76.33	11.13
47	9531	TKO-GAS	75.75	7.44
48	6702	FUJITSU	74.72	5.71
49	5020	JX	73.94	7.54
50	8053	SMITOMO	72.38	4.38

## Improvement of Monthly Turnover for Top 25 Names

### Ranking for December-2012

Rank	Symbol	Name	Sell Executions							Improve Avg bps	Buy Executions							Improve Avg bps
			Worse(A)		Equal(B)		Better (C)		(B)+(C)		Worse(A)		Equal(B)		Better (C)		(B)+(C)	
1	7203	TOYOTA	295	1.77%	1,095	6.58%	15,257	91.65%	98.23%	4.61	378	2.22%	1,641	9.62%	15,046	88.17%	98.23%	4.40
2	8411	MIZUHO	78	0.32%	600	2.48%	23,563	97.20%	99.68%	35.59	125	0.36%	2,695	7.77%	31,884	91.87%	99.68%	24.20
3	8306	MUFG	343	1.19%	1,924	6.66%	26,618	92.15%	98.81%	8.86	323	1.26%	2,640	10.32%	22,624	88.42%	98.81%	8.60
4	9432	NTT	328	3.82%	968	11.28%	7,282	84.89%	96.18%	3.94	243	2.34%	700	6.74%	9,445	90.92%	96.18%	5.06
5	7751	CANON	242	2.86%	1,236	14.59%	6,996	82.56%	97.14%	3.41	309	3.35%	1,089	11.81%	7,826	84.84%	97.14%	4.57
6	7201	NISSAN	414	2.07%	1,973	9.86%	17,621	88.07%	97.93%	4.40	524	2.61%	2,923	14.56%	16,633	82.83%	97.93%	3.82
7	9984	SOFTBNK	260	2.87%	1,095	12.07%	7,719	85.07%	97.13%	3.91	284	2.90%	1,042	10.63%	8,478	86.47%	97.13%	4.75
8	6501	HITACHI	155	1.75%	540	6.10%	8,162	92.15%	98.25%	7.28	255	3.02%	652	7.72%	7,539	89.26%	98.25%	7.46
9	8316	SMFG	404	4.57%	1,477	16.73%	6,950	78.70%	95.43%	2.53	682	7.33%	1,342	14.42%	7,284	78.26%	95.43%	2.51
10	7267	HONDA	467	4.38%	1,543	14.48%	8,649	81.14%	95.62%	2.45	514	6.02%	1,209	14.15%	6,821	79.83%	95.62%	2.91
11	6758	SONY	690	3.69%	2,110	11.29%	15,881	85.01%	96.31%	3.57	729	3.93%	2,219	11.98%	15,580	84.09%	96.31%	3.53
12	6954	FANUC	322	8.57%	776	20.66%	2,658	70.77%	91.43%	2.28	409	9.64%	884	20.84%	2,949	69.52%	91.43%	2.91
13	6301	KOMATSU	1,155	10.28%	2,797	24.90%	7,280	64.81%	89.72%	1.54	1,133	10.74%	2,806	26.59%	6,613	62.67%	89.72%	2.01
14	9433	KDDI	93	2.03%	331	7.22%	4,159	90.75%	97.97%	5.63	167	2.72%	351	5.71%	5,628	91.57%	97.97%	5.87
15	4063	SINETUC	247	4.10%	738	12.26%	5,033	83.63%	95.90%	3.72	296	4.68%	777	12.28%	5,256	83.05%	95.90%	3.91
16	8604	NOMRAHD	188	1.25%	1,489	9.91%	13,350	88.84%	98.75%	8.83	231	1.31%	1,895	10.74%	15,519	87.95%	98.75%	7.68
17	6502	TOSHIBA	137	1.51%	616	6.80%	8,310	91.69%	98.49%	11.65	128	1.36%	591	6.26%	8,725	92.39%	98.49%	13.15
18	9983	FASTRET	283	10.46%	389	14.38%	2,034	75.17%	89.54%	1.87	341	11.75%	450	15.50%	2,112	72.75%	89.54%	2.22
19	8802	MTB-EST	505	16.91%	735	24.61%	1,747	58.49%	83.09%	1.73	395	12.01%	912	27.74%	1,981	60.25%	83.09%	2.73
20	6753	SHARP	310	2.48%	1,563	12.51%	10,617	85.00%	97.52%	11.32	273	2.07%	2,523	19.13%	10,392	78.80%	97.52%	12.62
21	4502	TAKEDAP	71	1.04%	425	6.21%	6,346	92.75%	98.96%	4.27	106	1.59%	602	9.05%	5,945	89.36%	98.96%	4.47
22	8058	MITBISI	583	5.48%	2,575	24.22%	7,475	70.30%	94.52%	1.82	645	5.88%	2,491	22.72%	7,828	71.40%	94.52%	2.68
23	8031	MTSUI	349	3.40%	1,613	15.71%	8,305	80.89%	96.60%	2.33	536	5.10%	2,034	19.35%	7,941	75.55%	96.60%	2.78
24	9020	JR EAST	183	4.15%	401	9.09%	3,828	86.76%	95.85%	5.58	120	2.81%	398	9.30%	3,760	87.89%	95.85%	6.44
25	6752	PANASONIC	341	1.85%	1,606	8.72%	16,477	89.43%	98.15%	7.72	536	2.73%	2,406	12.26%	16,675	85.00%	98.15%	7.68

Note1: Excluded the executions from: before 9AM, lunch break, and after 3PM

Note2: Price improvement is calculated by comparing the execution price against the primary market's best bid for each sell or best offer for each buy at the point of execution and is calculated from the perspective of the Taker side of the trade