

Japannext PTS Monthly Statistics

October 2012

Registration as a Financial Instrument Business Operator under the Financial Instruments and Exchange Act (FIEA) (including authorization to operate a Proprietary Trading System (PTS)),
Director of Kanto Local Finance Bureau (Kinsho) No.45

TEL: +81-3-4577-4040 FAX:+81-3-3261-1702

WEB Japanese: <http://www.japannext.co.jp/ja>

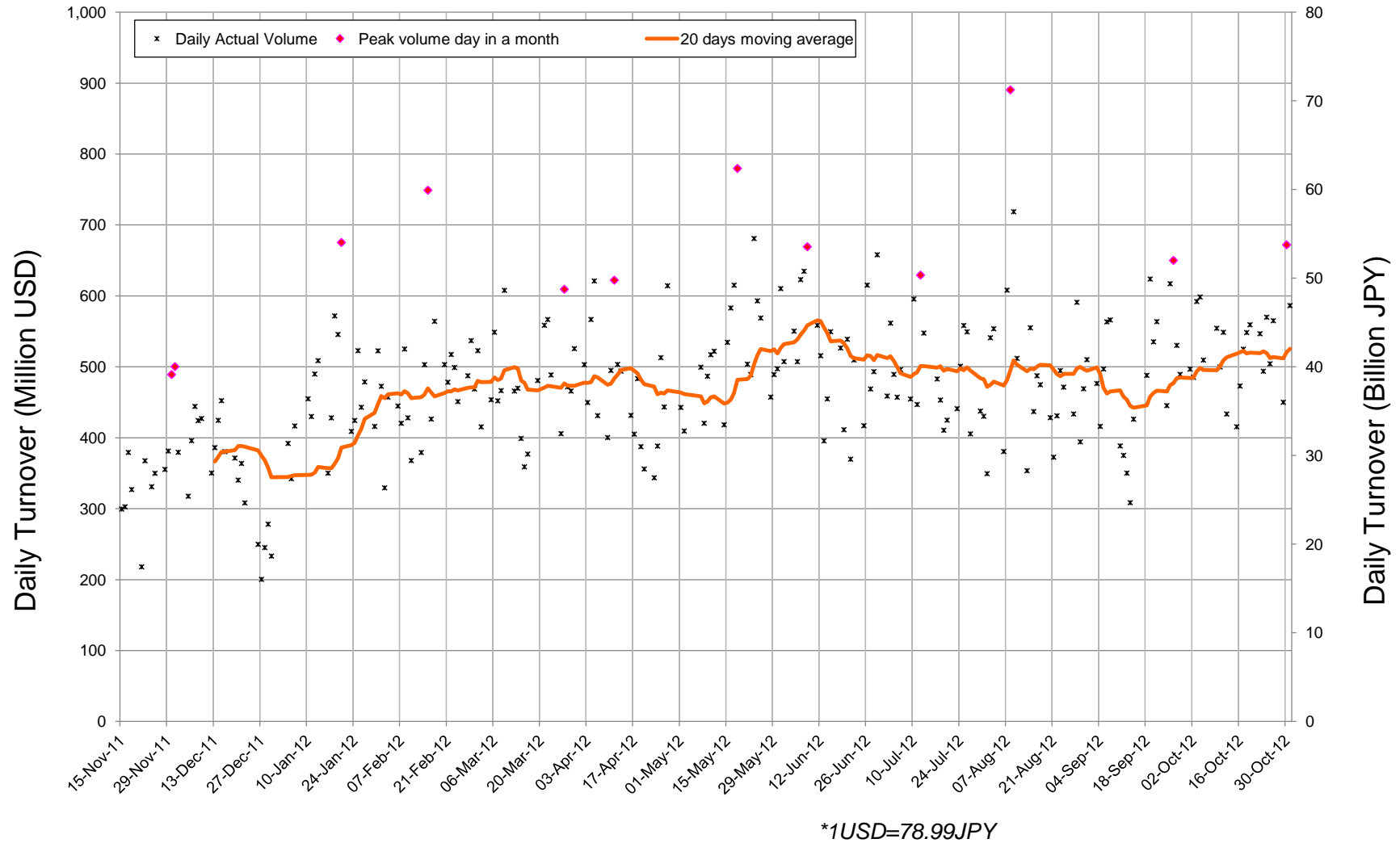
MAIL: ptsbiz@japannext.co.jp

English: <http://www.japannext.co.jp/en>

Disclaimer

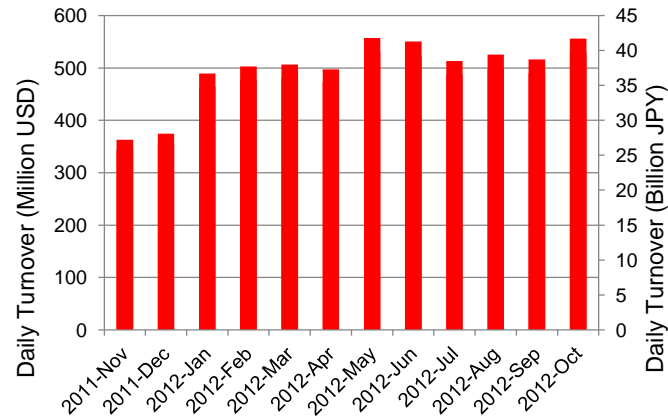
Information provided is for reference purposes only and does not constitute financial product advice nor is constituted as an offer to sell or solicitation to buy any security. The ownership and intellectual property rights of this information are solely and exclusively belong to SBI Japannext Co.,Ltd.("SBIJ") . According users are permitted to access and use the Information for their own personal, non-commercial and internal-use-only. Although SBIJ has made every effort to ensure the accuracy of the information as at the date of publication, SBIJ does not give any warranty as to the accuracy, reliability or completeness of the information. To the extent permitted by law, SBIJ and its employees, officers and contractors shall not be liable for any loss or damage arising in any way (including by way of negligence) from or in connection with any information provided or omitted or from anyone acting or refraining to act in reliance on this information.

Daily Turnover of Daytime Session

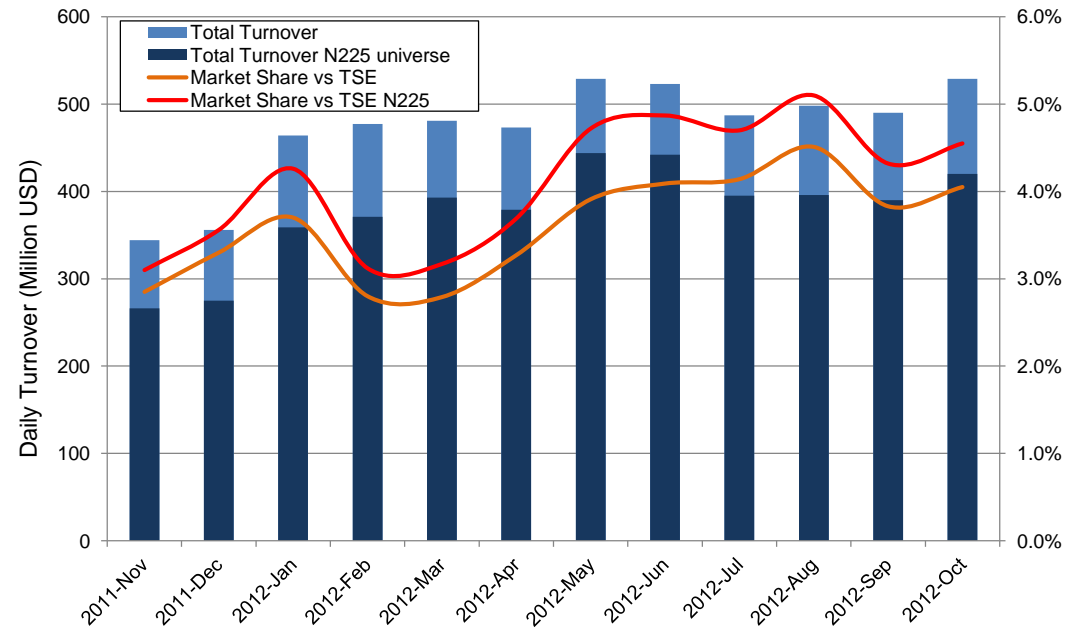


Summary of Daytime Session by Month

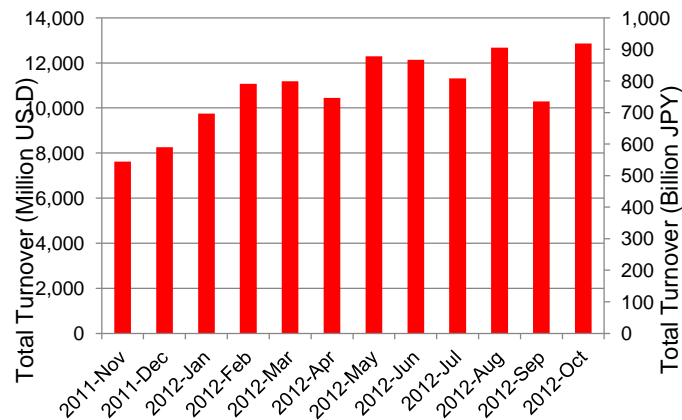
Average Daily Turnover by Month



Market Share vs TSE Turnover



Total Turnover by Month

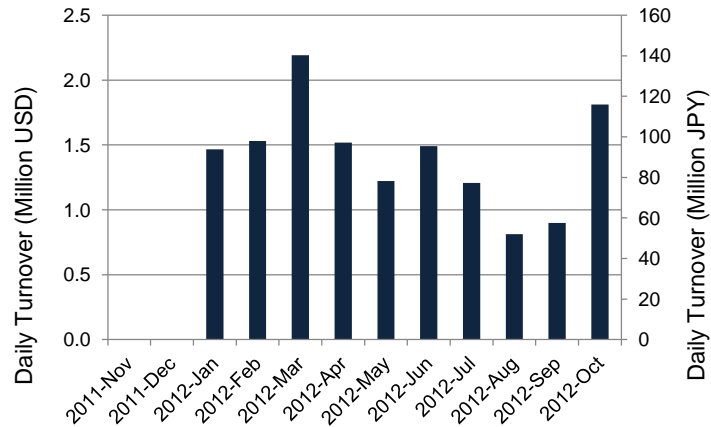


	11-Dec	12-Jan	12-Feb	12-Mar	12-Apr	12-May	12-Jun	12-Jul	12-Aug	12-Sep	12-Oct	
Value	356	464	477	481	473	529	523	487	498	490	529	(MM USD)
(N225)	275	359	371	393	379	444	442	395	396	390	420	(MM USD)
Share	3.30%	3.70%	2.80%	2.79%	3.27%	3.91%	4.09%	4.14%	4.51%	3.83%	4.05%	
(N225)	3.56%	4.26%	3.12%	3.17%	3.69%	4.72%	4.87%	4.70%	5.10%	4.32%	4.55%	
Improve	9.12	8.54	8.59	9.12	8.97	8.92	9.83	10.03	10.79	11.51	11.82	(N225 BPS)
Spread	25.21	25.08	25.62	25.70	25.72	25.87	26.46	27.17	30.17	30.28	29.73	(N225 BPS)

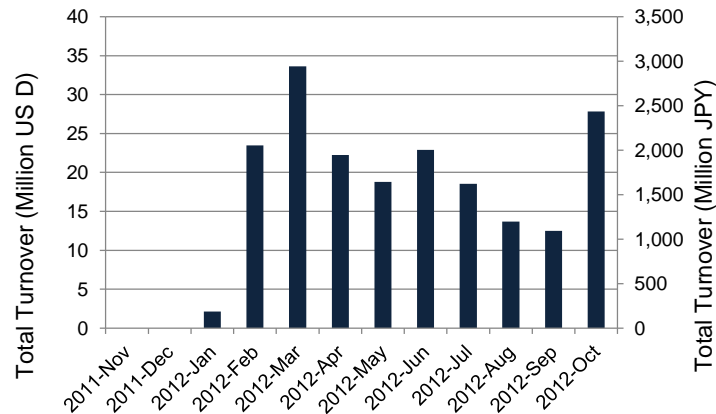
*1USD=78.99JPY

Summary of Nighttime Session by Month

Average Daily Turnover by Month



Total Turnover by Month



Turnover Top 30 Names in Nighttime Session of Month

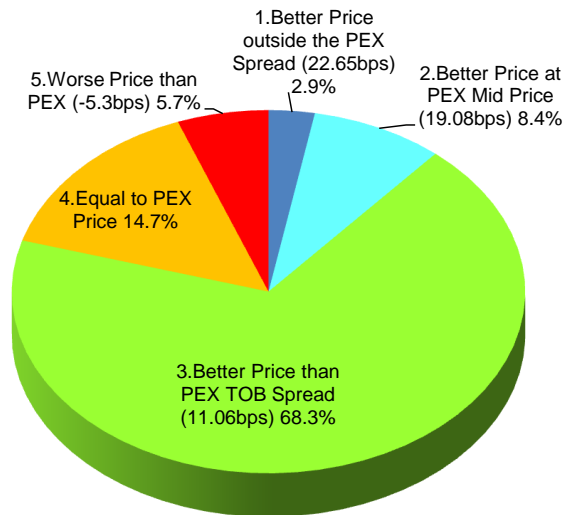
Rank	Symbol	Description	Turnover (USD)	Market Share (%)
1	9427	EACCESS	6,065,193	0.52
2	8411	MIZUHO	3,850,859	0.15
3	4974	TAKARBIO	2,634,556	0.37
4	9984	SOFTBNK	2,629,218	0.02
5	8058	MITBISI	1,043,214	0.03
6	3386	COSMOBIO	946,089	0.41
7	7751	CANON	637,556	0.02
8	8306	MUFG	611,928	0.01
9	3662	ATEAM	562,829	0.16
10	6753	SHARP	552,352	0.02
11	4571	NANOCARI	542,990	0.46
12	6069	TRENDERS	472,579	0.21
13	9437	DOCOMO	440,454	0.02
14	2395	SHINBIO	418,520	0.29
15	7267	HONDA	369,714	0.01
16	2338	FASTEP	353,633	0.33
17	6758	SONY	342,730	0.02
18	6301	KOMATSU	314,950	0.01
19	7203	TOYOTA	265,987	0.01
20	2370	MEDINET	262,340	0.51
21	3661	M-UP	251,166	0.07
22	4570	IBL	221,705	0.60
23	4565	SOSEI	216,167	0.27
24	8107	KIMRTAN	207,419	28.95
25	8316	SMFG	205,563	0.01
26	2370	MEDINET	262,340	0.51
27	3661	M-UP	251,166	0.07
28	4570	IBL	221,705	0.60
29	4565	SOSEI	216,167	0.27
30	8107	KIMRTAN	207,419	28.95

*1USD=78.99JPY

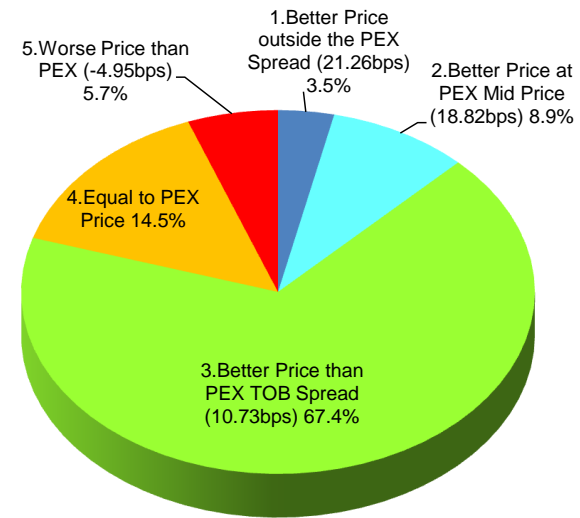
Daytime Session Execution

Nikkei 225 universe in October-2012

PEX : Primary Exchange



BUY Improvement



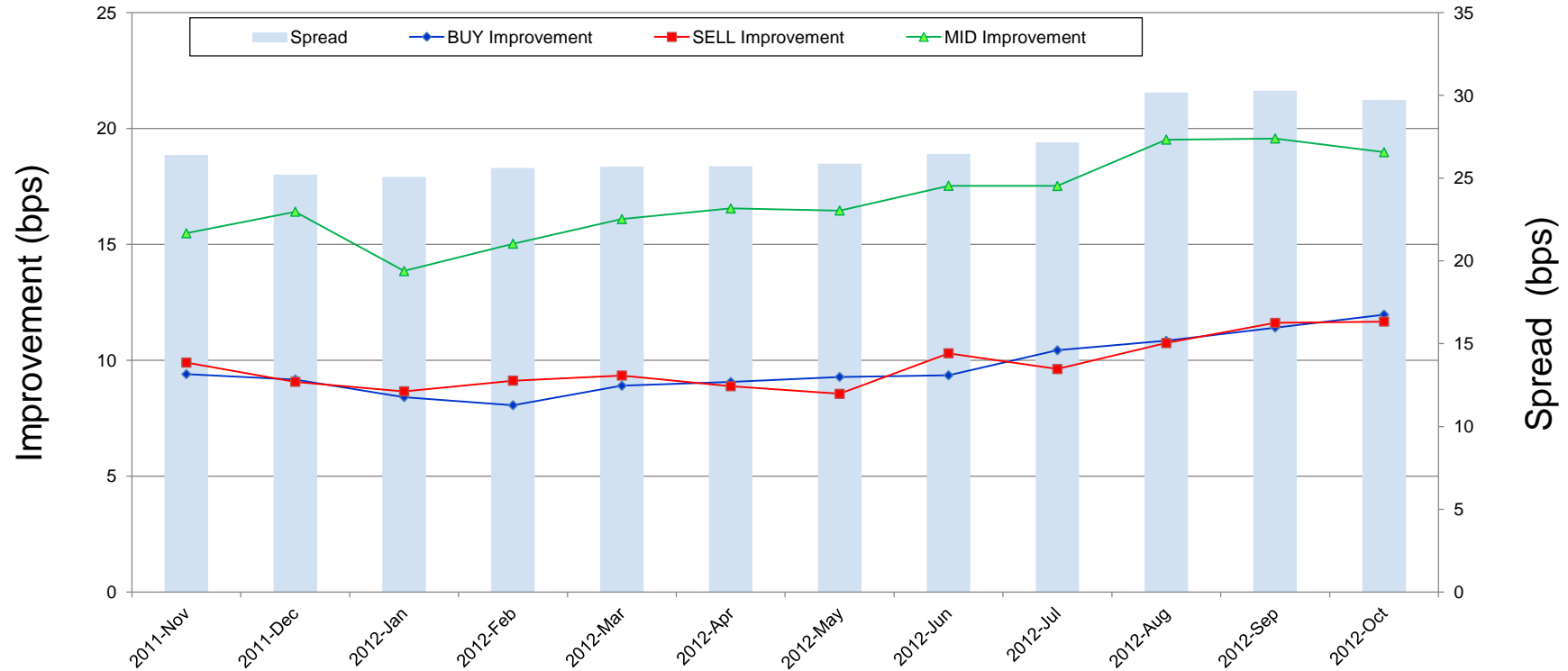
SELL Improvement

Note1: Excluded the executions from: before 9AM, lunch break, and after 3PM

Note2: Price improvement is calculated by comparing the execution price against the primary market's best bid for each sell or best offer for each buy at the point of execution and is calculated from the perspective of the Taker side of the trade

Improvement of Execution

Nikkei 225 universe in October-2012



Note1: Excluded the executions from: before 9AM, lunch break, and after 3PM

Note2: Price improvement is calculated by comparing the execution price against the primary market's best bid for each sell or best offer for each buy at the point of execution and is calculated from the perspective of the Taker side of the trade

Turnover Top 50 Names in Daytime Session

Ranking for October-2012

Rank	Symbol	Description	Turnover (Million USD)	Market Share (%)
1	7203	TOYOTA	307.58	5.83
2	8411	MIZUHO	253.25	9.81
3	8306	MUFG	246.59	5.59
4	7201	NISSAN	221.77	6.20
5	9984	SOFTBNK	221.06	1.64
6	9432	NTT	192.15	5.28
7	8058	MITBISI	181.35	5.37
8	4503	ASTELLAS	178.78	9.56
9	9433	KDDI	177.70	5.17
10	6954	FANUC	176.86	4.76
11	8316	SMFG	172.46	4.51
12	6501	HITACHI	171.93	4.88
13	7267	HONDA	154.99	3.88
14	4502	TAKEDAP	150.43	8.23
15	6502	TOSHIBA	139.62	4.41
16	9983	FASTRET	136.66	4.29
17	8031	MITSUI	130.26	6.18
18	9020	JR EAST	114.15	6.09
19	6752	PANASNIC	110.89	4.99
20	8802	MTB-EST	100.80	5.46
21	5401	NSTEELSM	100.51	4.49
22	8001	ITOCHU	100.27	7.33
23	8002	MARBENI	99.45	6.51
24	8801	MTI-FU	98.35	5.81
25	2914	JT	97.26	4.80

*1USD=78.99JPY

Rank	Symbol	Description	Turnover (Million USD)	Market Share (%)
26	9437	DOCOMO	96.11	4.03
27	6758	SONY	93.79	4.22
28	4063	SINETUC	92.43	5.62
29	3382	7&I-HD	92.07	4.91
30	7751	CANON	91.03	2.36
31	6971	KYOCERA	85.92	5.63
32	7011	MHI	84.42	5.98
33	6301	KOMATSU	82.40	2.76
34	6503	MELCO	82.23	5.60
35	8604	NOMRAHD	80.95	4.00
36	4523	EISAI	79.59	7.85
37	8830	SMIRE&D	77.80	5.68
38	8591	ORIX	76.74	5.24
39	8035	TKOELCN	75.09	4.56
40	5020	JX	72.84	5.44
41	8766	TOKIOMAR	71.03	4.50
42	9531	TKO-GAS	69.18	6.12
43	2651	LAWSON	69.17	7.80
44	6701	NEC	69.02	6.20
45	3402	TORAY	67.20	6.17
46	8309	SMTRUST	64.26	5.96
47	1605	INPEX	63.10	6.25
48	8308	RESONA	62.47	5.14
49	6988	NTTODEN	60.30	5.82
50	5108	BRIDSTN	59.86	4.59

Improvement of Monthly Turnover for Top 25 Names

Ranking for October-2012

Rank	Symbol	Name	Sell Executions							Improve Avg bps	Buy Executions							Improve Avg bps
			Worse(A)		Equal(B)		Better (C)		(B)+(C)		Worse(A)		Equal(B)		Better (C)		(B)+(C)	
1	7203	TOYOTA	479	4.48%	1,001	9.36%	9,213	86.16%	95.52%	4.26	520	4.80%	951	8.77%	9,372	86.43%	95.52%	5.20
2	8411	MIZUHO	33	0.12%	597	2.08%	28,008	97.80%	99.88%	31.14	35	0.13%	570	2.12%	26,306	97.75%	99.88%	37.89
3	8306	MUFG	236	1.23%	1,452	7.56%	17,509	91.21%	98.77%	9.72	212	1.07%	1,566	7.94%	17,955	90.99%	98.77%	10.00
4	7201	NISSAN	554	2.65%	1,933	9.26%	18,398	88.09%	97.35%	4.70	452	2.26%	1,934	9.65%	17,658	88.10%	97.35%	5.30
5	9984	SOFTBNK	1,097	8.20%	2,699	20.18%	9,579	71.62%	91.80%	1.97	1,379	9.47%	3,092	21.24%	10,089	69.29%	91.80%	2.37
6	9432	NTT	472	5.16%	1,385	15.14%	7,289	79.70%	94.84%	3.50	219	2.95%	847	11.40%	6,365	85.65%	94.84%	5.14
7	8058	MITBISI	946	9.26%	2,620	25.65%	6,649	65.09%	90.74%	2.00	1,022	10.41%	2,926	29.81%	5,867	59.78%	90.74%	2.72
8	4503	ASTELLAS	405	5.22%	1,270	16.38%	6,080	78.40%	94.78%	3.65	425	5.45%	1,091	13.99%	6,283	80.56%	94.78%	4.87
9	9433	KDDI	168	2.88%	632	10.85%	5,027	86.27%	97.12%	4.61	158	2.76%	615	10.75%	4,949	86.49%	97.12%	5.49
10	6954	FANUC	463	12.78%	1,046	28.86%	2,115	58.36%	87.22%	2.11	458	10.48%	1,475	33.75%	2,437	55.77%	87.22%	3.55
11	8316	SMFG	1,124	11.74%	2,830	29.57%	5,618	58.69%	88.26%	1.28	1,129	13.27%	2,742	32.22%	4,640	54.52%	88.26%	1.86
12	6501	HITACHI	200	2.41%	854	10.27%	7,260	87.32%	97.59%	7.08	114	1.60%	717	10.05%	6,306	88.36%	97.59%	8.78
13	7267	HONDA	1,679	17.04%	2,359	23.94%	5,817	59.03%	82.96%	1.37	1,663	19.77%	2,239	26.62%	4,508	53.60%	82.96%	2.03
14	4502	TAKEDAP	121	1.90%	613	9.63%	5,634	88.47%	98.10%	4.16	156	2.12%	629	8.53%	6,586	89.35%	98.10%	4.90
15	6502	TOSHIBA	133	1.46%	595	6.53%	8,382	92.01%	98.54%	13.50	156	1.58%	888	9.02%	8,804	89.40%	98.54%	12.92
16	9983	FASTRET	462	17.72%	522	20.02%	1,623	62.26%	82.28%	1.79	604	18.14%	921	27.66%	1,805	54.20%	82.28%	2.72
17	8031	mitsui	951	8.91%	2,203	20.64%	7,517	70.44%	91.09%	2.55	760	8.52%	1,771	19.86%	6,386	71.62%	91.09%	3.47
18	9020	JR EAST	94	2.54%	367	9.93%	3,235	87.53%	97.46%	5.95	114	3.35%	385	11.31%	2,905	85.34%	97.46%	6.28
19	6752	PANASNIC	477	3.24%	1,339	9.09%	12,907	87.67%	96.76%	6.67	337	2.53%	1,284	9.64%	11,694	87.83%	96.76%	6.92
20	8802	MTB-EST	591	19.88%	637	21.43%	1,745	58.69%	80.12%	1.95	396	18.52%	501	23.43%	1,241	58.04%	80.12%	3.30
21	5401	NSTEELSM	103	1.37%	586	7.81%	6,813	90.82%	98.63%	20.69	116	1.59%	602	8.23%	6,598	90.19%	98.63%	21.56
22	8001	ITOCHU	579	4.62%	1,423	11.35%	10,534	84.03%	95.38%	3.97	425	3.50%	1,347	11.10%	10,367	85.40%	95.38%	4.33
23	8002	MARBENI	137	2.67%	623	12.15%	4,366	85.17%	97.33%	6.05	111	1.89%	724	12.31%	5,047	85.80%	97.33%	6.46
24	8801	MTI-FU	716	26.38%	617	22.73%	1,381	50.88%	73.62%	1.53	428	20.14%	548	25.79%	1,149	54.07%	73.62%	2.94
25	2914	JT	997	9.71%	3,104	30.24%	6,162	60.04%	90.29%	1.32	987	10.71%	2,720	29.53%	5,505	59.76%	90.29%	2.17

Note1: Excluded the executions from: before 9AM, lunch break, and after 3PM

Note2: Price improvement is calculated by comparing the execution price against the primary market's best bid for each sell or best offer for each buy at the point of execution and is calculated from the perspective of the Taker side of the trade