

Japannext PTS Monthly Statistics

September 2012

Registration as a Financial Instrument Business Operator under the Financial Instruments and Exchange Act (FIEA) (including authorization to operate a Proprietary Trading System (PTS)),
Director of Kanto Local Finance Bureau (Kinsho) No.45

TEL: +81-3-4577-4040 FAX:+81-3-3261-1702

WEB Japanese: <http://www.japannext.co.jp/ja>

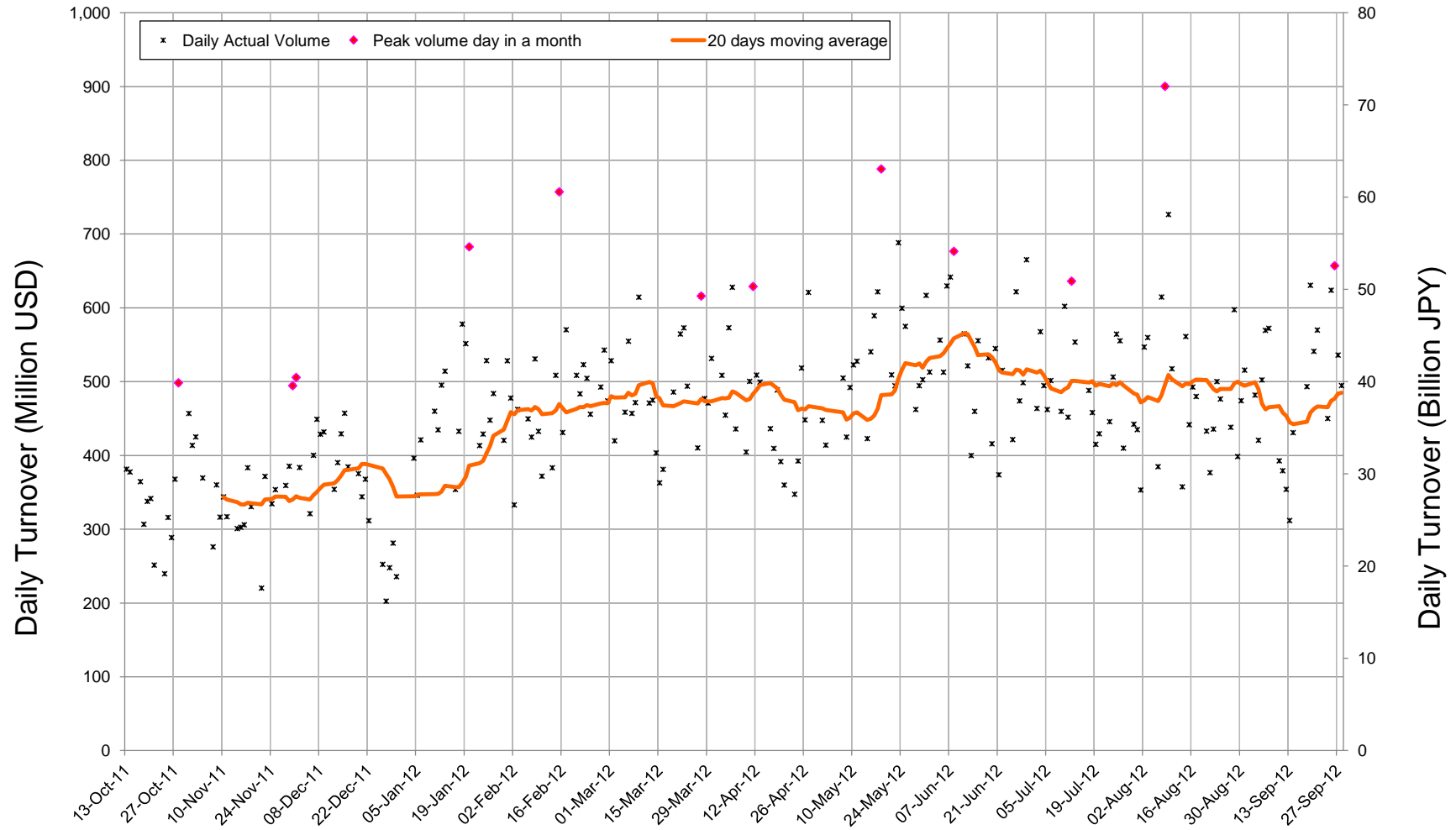
MAIL: ptsbiz@japannext.co.jp

English: <http://www.japannext.co.jp/en>

Disclaimer

Information provided is for reference purposes only and does not constitute financial product advice nor is constituted as an offer to sell or solicitation to buy any security. The ownership and intellectual property rights of this information are solely and exclusively belong to SBI Japannext Co.,Ltd.("SBIJ") . According users are permitted to access and use the Information for their own personal, non-commercial and internal-use-only. Although SBIJ has made every effort to ensure the accuracy of the information as at the date of publication, SBIJ does not give any warranty as to the accuracy, reliability or completeness of the information. To the extent permitted by law, SBIJ and its employees, officers and contractors shall not be liable for any loss or damage arising in any way (including by way of negligence) from or in connection with any information provided or omitted or from anyone acting or refraining to act in reliance on this information.

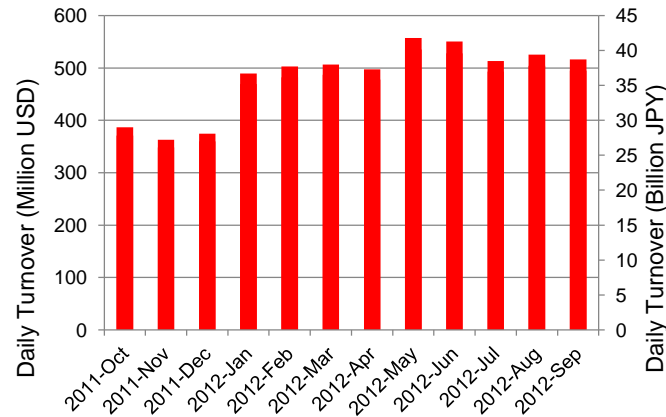
Daily Turnover of Daytime Session



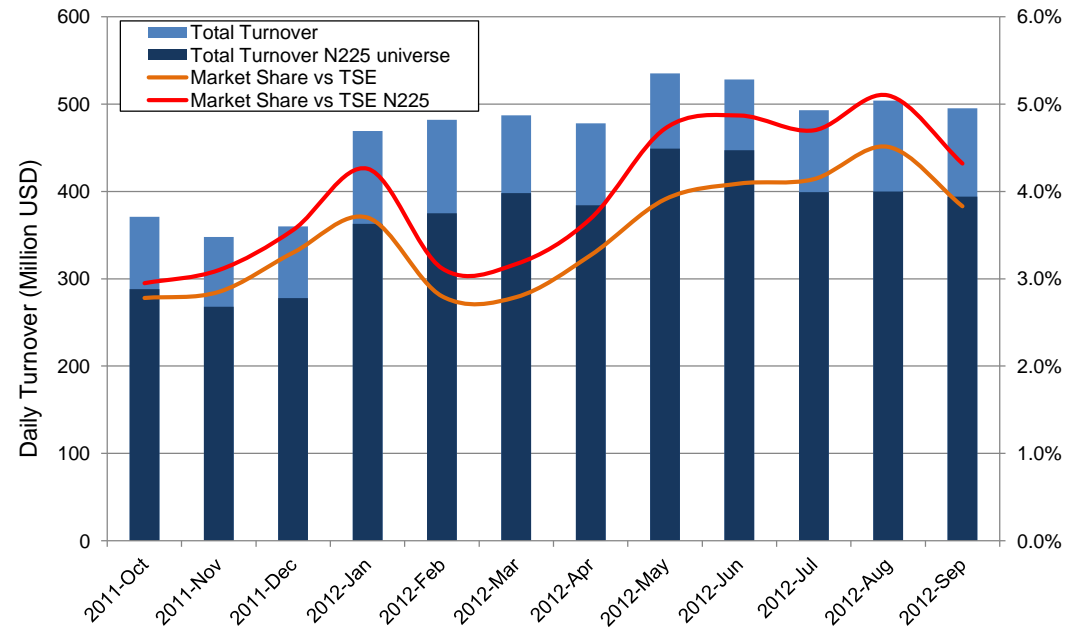
*1USD=78.14JPY

Summary of Daytime Session by Month

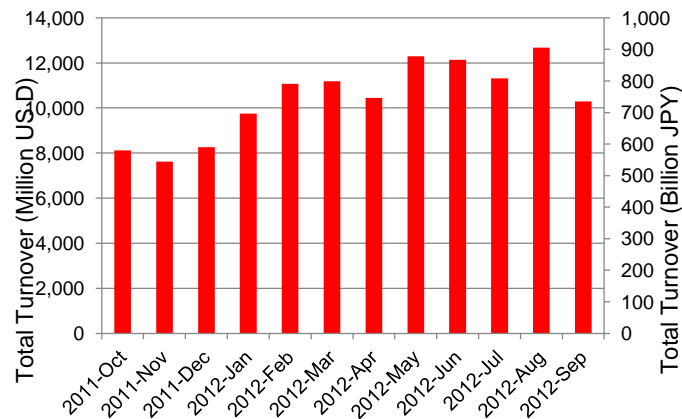
Average Daily Turnover by Month



Market Share vs TSE Turnover



Total Turnover by Month

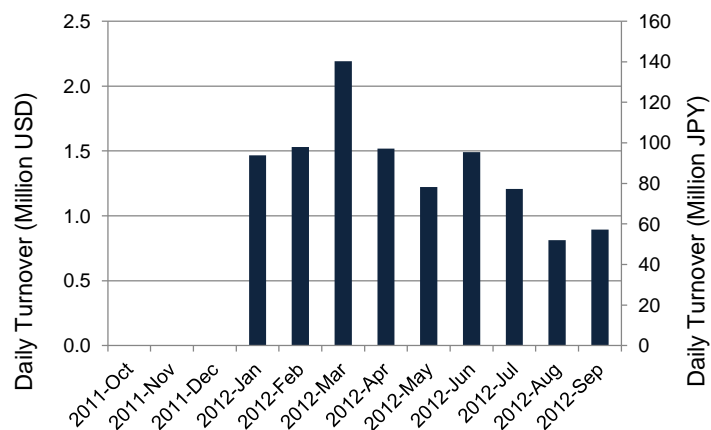


	11-Nov	11-Dec	12-Jan	12-Feb	12-Mar	12-Apr	12-May	12-Jun	12-Jul	12-Aug	12-Sep	
Value	348	360	469	482	487	478	535	528	493	504	495	(MM USD)
(N225)	268	278	363	375	398	384	449	447	399	400	394	(MM USD)
Share	2.85%	3.30%	3.70%	2.80%	2.79%	3.27%	3.91%	4.09%	4.14%	4.51%	3.83%	
(N225)	3.10%	3.56%	4.26%	3.12%	3.17%	3.69%	4.72%	4.87%	4.70%	5.10%	4.32%	
Improve	9.65	9.12	8.54	8.59	9.12	8.97	8.92	9.83	10.03	10.79	11.51	(N225 BPS)
Spread	26.39	25.21	25.08	25.62	25.70	25.72	25.87	26.46	27.17	30.17	30.28	(N225 BPS)

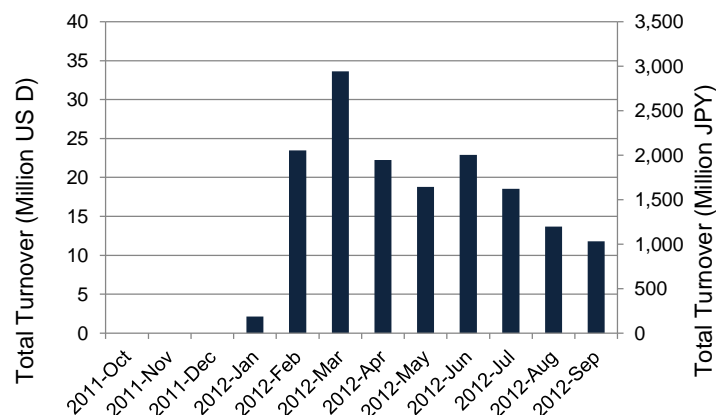
*1USD=78.14JPY

Summary of Nighttime Session by Month

Average Daily Turnover by Month



Total Turnover by Month



Turnover Top 30 Names in Nighttime Session of Month

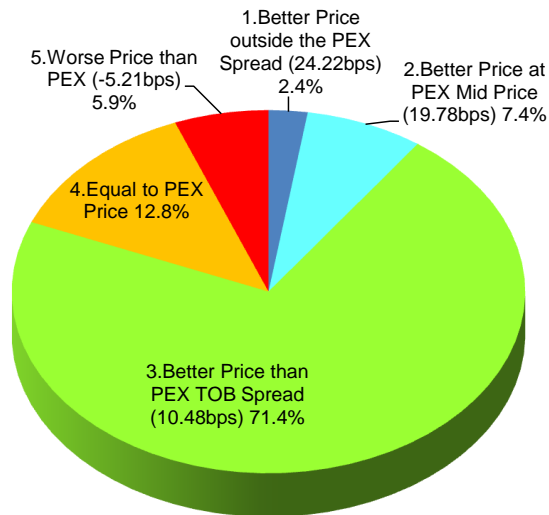
Rank	Symbol	Description	Turnover (USD)	Market Share (%)
1	8411	MIZUHO	3,082,289	0.12
2	6753	SHARP	949,518	0.02
3	7777	3DMATRIX	602,744	0.29
4	4565	SOSEI	531,320	0.39
5	8306	MUFG	473,686	0.01
6	6758	SONY	353,648	0.01
7	9437	DOCOMO	350,886	0.02
8	6301	KOMATSU	271,333	0.01
9	9984	SOFTBNK	257,384	0.01
10	8058	MITBISI	243,959	0.01
11	7267	HONDA	241,044	0.01
12	6723	RENASAS	223,441	0.20
13	7751	CANON	221,065	0.01
14	9202	ANA	210,361	0.02
15	3661	M-UP	204,301	0.24
16	3441	SANNO	180,805	1.56
17	9675	JOBANKO	177,988	0.27
18	3649	PSC	177,659	0.11
19	6163	H&F	174,486	0.17
20	8031	mitsui	164,991	0.01
21	7448	JEANS M	164,349	0.07
22	3387	CREATRHD	156,452	3.45
23	6900	TODENPA	155,916	0.40
24	7203	TOYOTA	154,773	0.00
25	2338	FASTEP	140,219	1.84
26	8031	mitsui	164,991	0.01
27	7448	JEANS M	164,349	0.07
28	3387	CREATRHD	156,452	3.45
29	6900	TODENPA	155,916	0.40
30	7203	TOYOTA	154,773	0.00

*1USD=78.14JPY

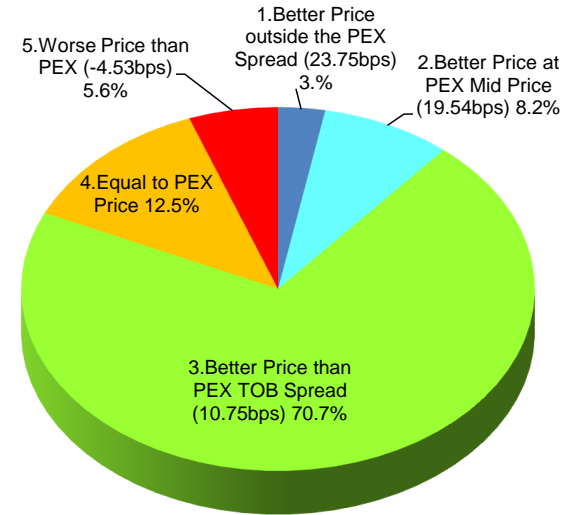
Daytime Session Execution

Nikkei 225 universe in September-2012

PEX : Primary Exchange



BUY Improvement



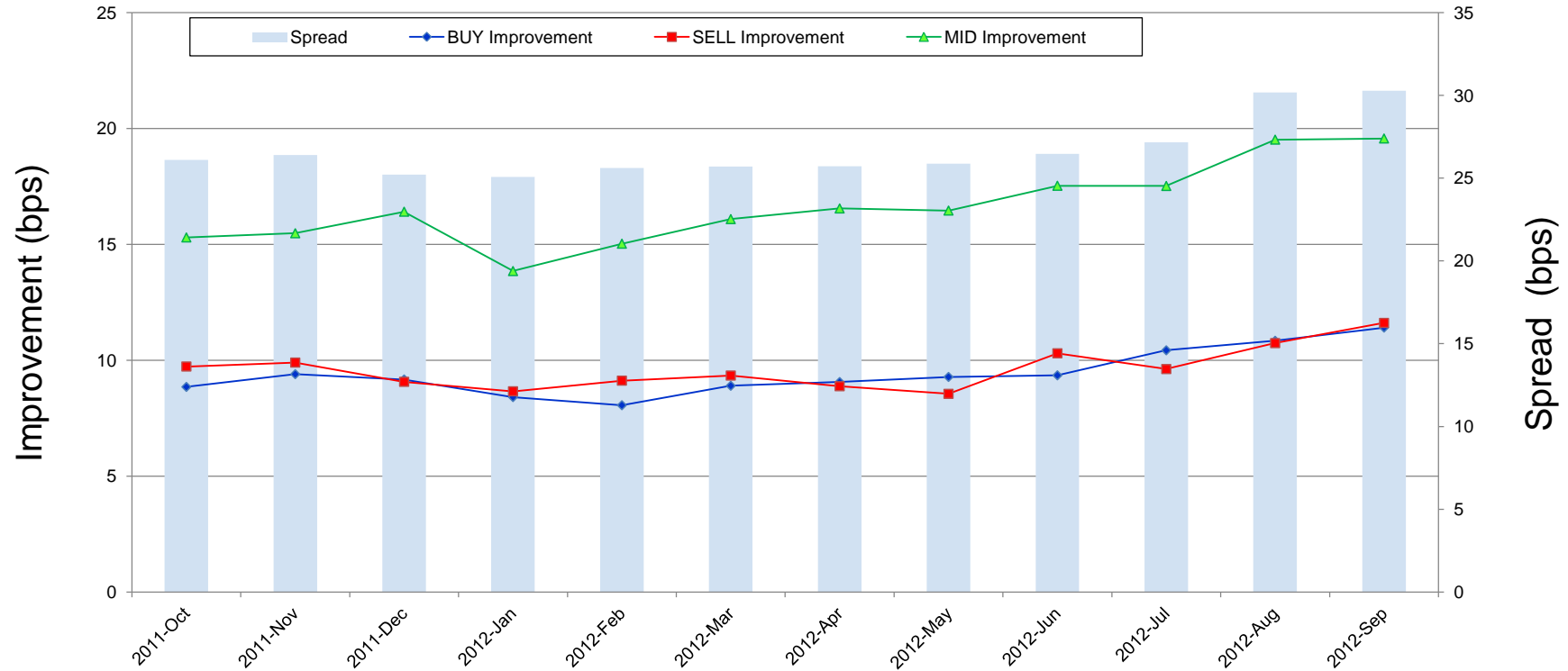
SELL Improvement

Note1: Excluded the executions from: before 9AM, lunch break, and after 3PM

Note2: Price improvement is calculated by comparing the execution price against the primary market's best bid for each sell or best offer for each buy at the point of execution and is calculated from the perspective of the Taker side of the trade

Improvement of Execution

Nikkei 225 universe in September-2012



Note1: Excluded the executions from: before 9AM, lunch break, and after 3PM

Note2: Price improvement is calculated by comparing the execution price against the primary market's best bid for each sell or best offer for each buy at the point of execution and is calculated from the perspective of the Taker side of the trade

Turnover Top 50 Names in Daytime Session

Ranking for September-2012

Rank	Symbol	Description	Turnover (Million USD)	Market Share (%)
1	7203	TOYOTA	284.99	5.96
2	8306	MUFG	252.25	5.91
3	8411	MIZUHO	251.42	10.00
4	7201	NISSAN	220.73	6.04
5	7267	HONDA	160.48	4.52
6	9432	NTT	155.61	6.99
7	4502	TAKEDAP	148.16	7.87
8	6501	HITACHI	132.32	5.51
9	8316	SMFG	130.76	3.50
10	9984	SOFTBNK	129.61	2.89
11	4503	ASTELLAS	127.04	6.85
12	6954	FANUC	125.56	3.43
13	8058	MITBISI	120.60	4.37
14	9433	KDDI	117.18	5.15
15	8031	MITSUI	116.52	5.24
16	6752	PANASNIC	110.60	5.60
17	8001	ITOCHU	109.44	7.57
18	6502	TOSHIBA	103.50	5.64
19	9020	JR EAST	98.45	7.60
20	8802	MTB-EST	94.16	6.17
21	2914	JT	91.71	3.49
22	8830	SMIRE&D	88.65	6.08
23	8002	MARBENI	87.15	5.69
24	5401	NSTEELSM	84.46	4.66
25	3382	7&I-HD	83.58	4.36

*1USD=78.14JPY

Rank	Symbol	Description	Turnover (Million USD)	Market Share (%)
26	8801	MTI-FU	79.94	5.08
27	4523	EISAI	79.07	7.39
28	8053	SMITOMO	78.71	6.28
29	6758	SONY	75.66	2.82
30	8604	NOMRAHD	73.92	3.39
31	6971	KYOCERA	70.29	4.92
32	1605	INPEX	69.06	5.94
33	4063	SINETUC	68.34	4.63
34	8591	ORIX	66.34	5.71
35	9437	DOCOMO	65.11	3.35
36	6503	MELCO	64.01	6.37
37	9202	ANA	63.43	6.29
38	8035	TKOELCN	63.22	5.02
39	7751	CANON	62.46	1.67
40	7011	MHI	61.27	5.89
41	6301	KOMATSU	59.79	2.06
42	9531	TKO-GAS	56.96	5.70
43	6988	NTTODEN	56.55	5.65
44	6273	SMC	55.86	6.07
45	8113	UNICHAM	53.97	7.04
46	8267	AEON	53.74	6.86
47	2651	LAWSON	52.54	6.95
48	2503	KIRIN HD	52.07	6.71
49	5108	BRIDSTN	51.46	4.25
50	5020	JX	50.69	5.48

Improvement of Monthly Turnover for Top 25 Names

Ranking for September-2012

Rank	Symbol	Name	Sell Executions							Improve Avg bps	Buy Executions							Improve Avg bps
			Worse(A)		Equal(B)		Better (C)		(B)+(C)		Worse(A)		Equal(B)		Better (C)		(B)+(C)	
1	7203	TOYOTA	274	2.85%	790	8.21%	8,555	88.94%	97.15%	4.77	363	4.15%	793	9.06%	7,596	86.79%	97.15%	5.14
2	8306	MUFG	313	1.65%	1,289	6.79%	17,389	91.56%	98.35%	8.92	184	1.00%	1,230	6.72%	16,900	92.28%	98.35%	9.38
3	8411	MIZUHO	52	0.18%	656	2.26%	28,315	97.56%	99.82%	35.64	85	0.34%	613	2.42%	24,614	97.24%	99.82%	34.51
4	7201	NISSAN	608	3.15%	2,008	10.39%	16,710	86.46%	96.85%	4.03	464	2.28%	1,682	8.26%	18,224	89.46%	96.85%	4.81
5	7267	HONDA	2,068	19.32%	2,524	23.58%	6,112	57.10%	80.68%	1.22	1,999	20.71%	2,338	24.22%	5,316	55.07%	80.68%	1.88
6	9432	NTT	285	3.77%	769	10.16%	6,512	86.07%	96.23%	3.81	190	3.16%	723	12.03%	5,097	84.81%	96.23%	3.99
7	4502	TAKEDAP	152	2.27%	544	8.13%	5,993	89.59%	97.73%	3.83	84	1.42%	579	9.78%	5,256	88.80%	97.73%	4.17
8	6501	HITACHI	221	3.47%	532	8.35%	5,619	88.18%	96.53%	6.15	145	2.63%	517	9.39%	4,843	87.97%	96.53%	7.73
9	8316	SMFG	1,057	14.54%	1,762	24.24%	4,449	61.21%	85.46%	1.38	1,308	20.63%	1,648	25.99%	3,384	53.38%	85.46%	1.79
10	9984	SOFTBNK	174	2.52%	1,223	17.68%	5,520	79.80%	97.48%	3.66	158	2.61%	755	12.45%	5,150	84.94%	97.48%	4.78
11	4503	ASTELLAS	322	5.56%	695	12.00%	4,774	82.44%	94.44%	3.40	384	6.71%	654	11.44%	4,681	81.85%	94.44%	4.09
12	6954	FANUC	530	17.27%	657	21.41%	1,882	61.32%	82.73%	2.07	541	17.42%	722	23.25%	1,843	59.34%	82.73%	3.41
13	8058	MITBISI	663	9.65%	1,818	26.47%	4,387	63.88%	90.35%	1.61	813	12.35%	1,638	24.88%	4,132	62.77%	90.35%	2.17
14	9433	KDDI	117	3.04%	353	9.16%	3,385	87.81%	96.96%	4.73	156	3.92%	383	9.64%	3,436	86.44%	96.96%	5.30
15	8031	MITSUI	978	9.16%	1,965	18.41%	7,732	72.43%	90.84%	2.44	931	10.20%	1,825	20.00%	6,367	69.79%	90.84%	2.87
16	6752	PANASNIC	712	5.10%	1,489	10.66%	11,769	84.24%	94.90%	5.54	577	4.18%	1,491	10.79%	11,745	85.03%	94.90%	6.65
17	8001	ITOCHU	702	5.96%	1,101	9.35%	9,976	84.69%	94.04%	3.86	694	5.85%	1,490	12.56%	9,681	81.59%	94.04%	4.06
18	6502	TOSHIBA	87	1.25%	686	9.83%	6,203	88.92%	98.75%	12.22	67	0.92%	783	10.76%	6,424	88.31%	98.75%	14.68
19	9020	JR EAST	107	3.84%	253	9.07%	2,428	87.09%	96.16%	5.71	113	3.81%	267	8.99%	2,589	87.20%	96.16%	5.76
20	8802	MTB-EST	476	16.49%	450	15.59%	1,960	67.91%	83.51%	2.07	563	26.23%	338	15.75%	1,245	58.01%	83.51%	2.74
21	2914	JT	1,224	11.65%	2,448	23.30%	6,836	65.06%	88.35%	1.64	1,078	14.65%	2,468	33.53%	3,814	51.82%	88.35%	2.16
22	8830	SMIRE&D	380	19.90%	272	14.24%	1,258	65.86%	80.10%	1.85	509	33.84%	174	11.57%	821	54.59%	80.10%	1.81
23	8002	MARBENI	126	2.94%	436	10.19%	3,717	86.87%	97.06%	5.70	138	3.43%	442	10.98%	3,445	85.59%	97.06%	6.02
24	5401	NSTEELSM	97	1.61%	490	8.11%	5,456	90.29%	98.39%	21.62	105	1.57%	510	7.64%	6,064	90.79%	98.39%	22.36
25	3382	T&I-HD	960	14.07%	1,600	23.45%	4,262	62.47%	85.93%	1.36	959	14.73%	1,691	25.98%	3,860	59.29%	85.93%	2.09

Note1: Excluded the executions from: before 9AM, lunch break, and after 3PM

Note2: Price improvement is calculated by comparing the execution price against the primary market's best bid for each sell or best offer for each buy at the point of execution and is calculated from the perspective of the Taker side of the trade