

---

# SBI Japannext Weekly Statistics

## 20-June-2011

### *Japannext PTS*

---

*SBI Japannext Co., Ltd*

#### Disclaimer

Information provided is for reference purposes only and does not constitute financial product advice nor is constituted as an offer to sell or solicitation to buy any security. The ownership and intellectual property rights of this information are solely and exclusively belong to SBI Japannext Co.,Ltd.( "SBIJ" ) . According users are permitted to access and use the Information for their own personal, non-commercial and internal-use-only. Although SBIJ has made every effort to ensure the accuracy of the information as at the date of publication, SBIJ does not give any warranty as to the accuracy, reliability or completeness of the information. To the extent permitted by law, SBIJ and its employees, officers and contractors shall not be liable for any loss or damage arising in any way (including by way of negligence) from or in connection with any information provided or omitted or from anyone acting or refraining to act in reliance on this information.

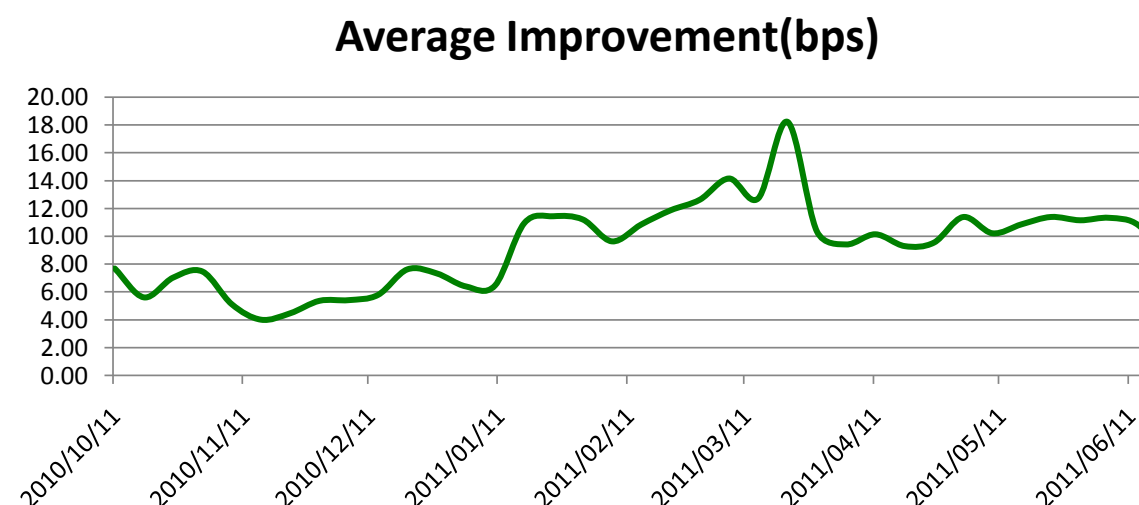
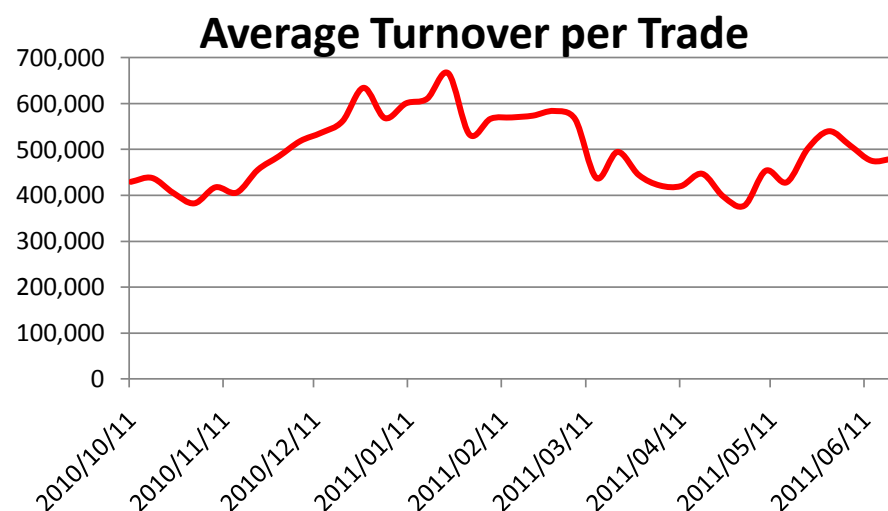
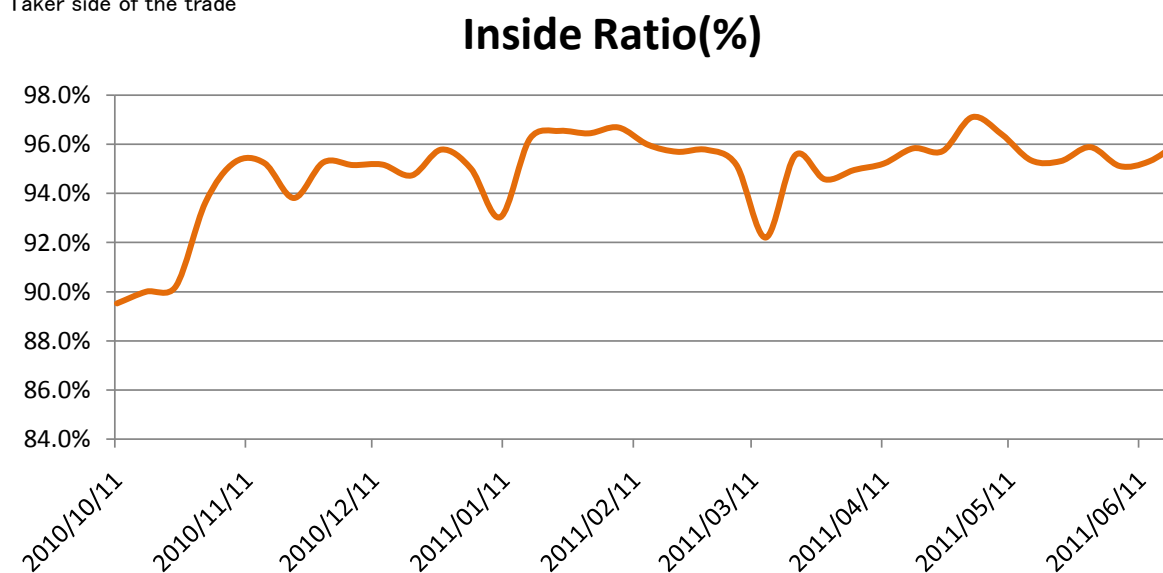
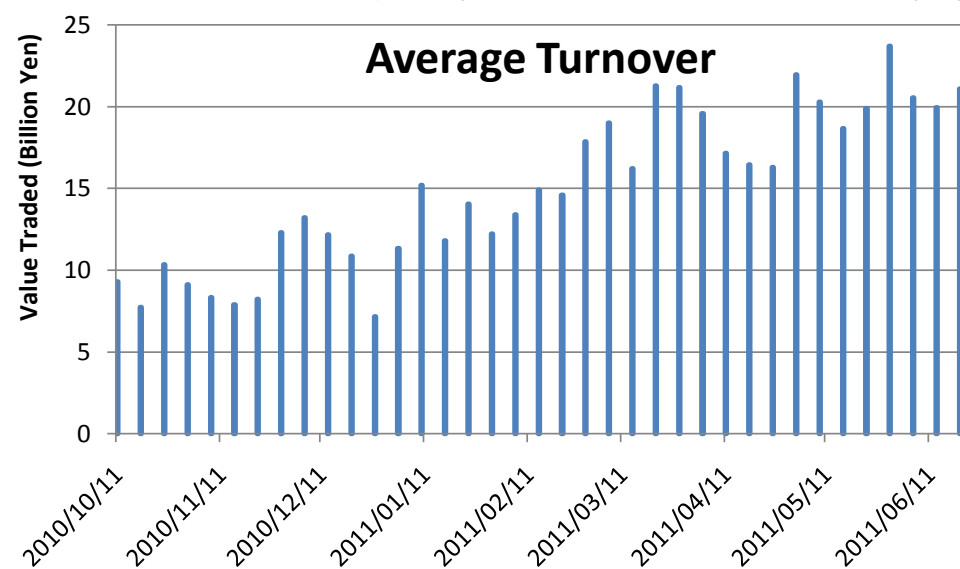


# Daily Average Statistics of The Week

## Daily Average in Week of 20-June-2011

	# of Shares Traded	Turnover (Yen)	Universe	No of Trades	% of Inside	Avg Improvement(bps)
<b>Total</b>	<b>37,056,609</b>	<b>21,094,174,542</b>	<b>718</b>	<b>43,993</b>	<b>96.07%</b>	<b>8.10</b>
Large CAP	18,500,623	12,673,790,704	99	17,373	96.22%	14.36
Mid CAP	16,865,188	7,445,997,696	384	22,115	96.08%	1.77
Small CAP	1,690,798	974,386,142	235	4,504	95.45%	15.16

\*Price improvement is calculated by comparing the execution price against the primary market's best bid for each sell or best offer for each buy at the point of execution and is calculated from the perspective of the Taker side of the trade





# Top 5 Average Turnover of The Week

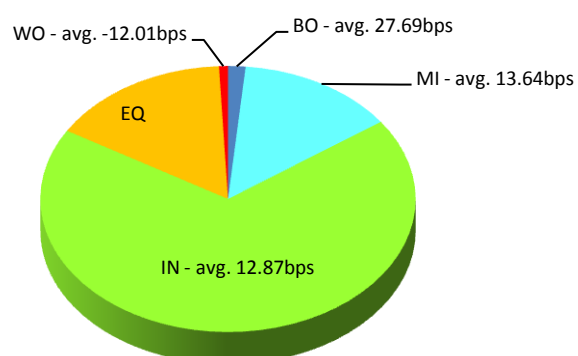
## Weekly Total in Week of 20-June-2011

Symbol	Description	Turnover (yen)	Last Price	Market Shr(%)	Avg Improvement(bps)
8306.T	MUFG	2,893,197,460	376	3.72	13.00
7203.T	TOYOTA	2,871,336,300	3,285	3.20	4.45
8411.T	MIZUHO	2,696,434,370	128	5.56	24.00
7267.T	HONDA	2,493,227,890	3,000	4.03	2.97
9984.T	SOFTBNK	2,192,919,280	2,987	1.89	2.29

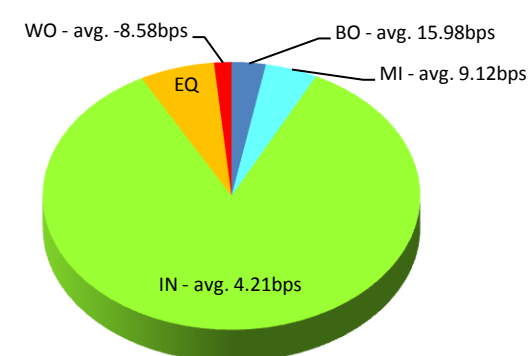
### Execution improvement patterns categorized into 5 groups.

- (1) **Better Outside ("BO")** – better price outside the Primary Exchange spread
- (2) **Mid Price ("MI")** – better price at Primary Exchange mid price
- (3) **Inside BBO ("IN")** – better price inside Primary Exchange BBO excluding mid price
- (4) **Equal ("EQ")** – equal price to Primary Exchange BBO
- (5) **Worse ("WO")** – worse price than Primary Exchange

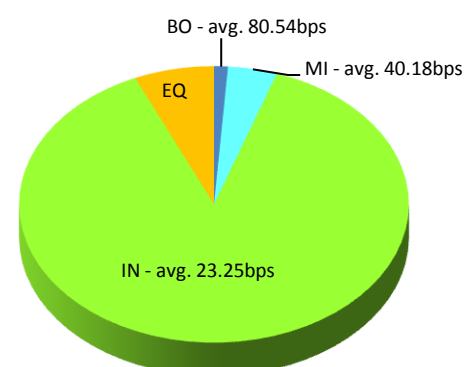
**MUFG(8306.T)**



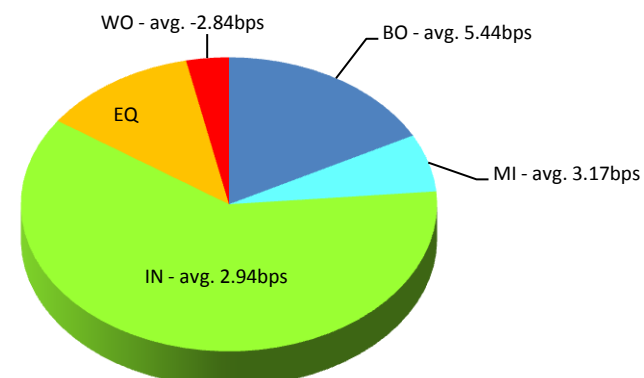
**TOYOTA(7203.T)**



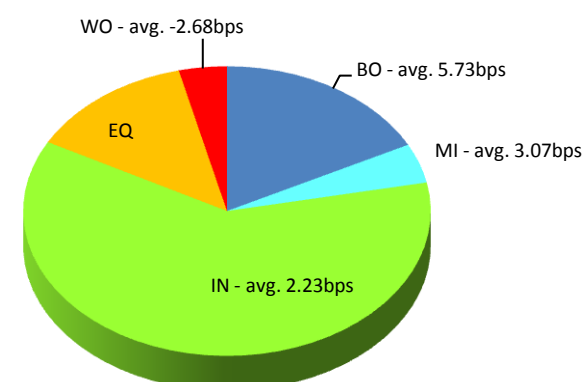
**MIZUHO(8411.T)**



**HONDA(7267.T)**



**SOFTBNK(9984.T)**



Note1: Excluded the executions from: before 9AM, lunch break, and after 3PM

Note2: Price improvement is calculated by comparing the execution price against the primary market's best bid for each sell or best offer for each buy at the point of execution and is calculated from the perspective of the Taker side of the trade



# Top 5 Average Improvement of The Week\*

\* Weekly Total Turnover > 100 Million Yen

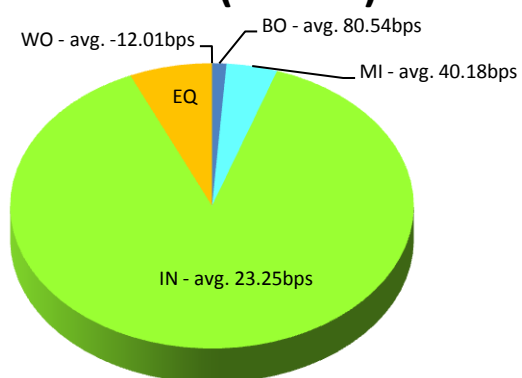
## Weekly Total in Week of 20-June-2011

Symbol	Description	Turnover (yen)	Last Price	Market Shr(%)	Avg Improvement(bps)
8411.T	MIZUHO	2,696,434,370	128	5.56	24.00
7004.T	HIT-ZOS	112,576,550	125	2.70	29.88
3101.T	TOYOBO	153,510,400	114	7.62	20.82
5701.T	NP-LMTL	132,516,400	155	5.53	15.74
5405.T	SMI-MTI	868,842,100	174	5.85	14.64

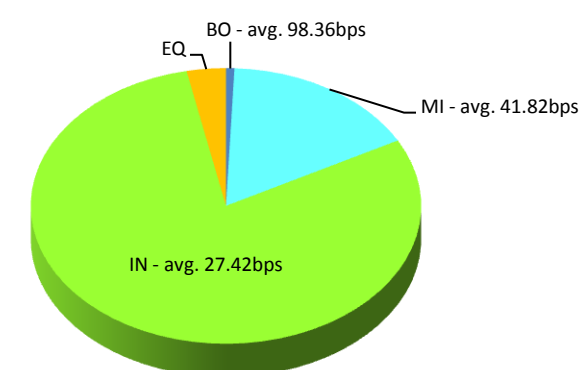
### Execution improvement patterns categorized into 5 groups.

- (1) **Better Outside ("BO")** – better price outside the Primary Exchange spread
- (2) **Mid Price ("MI")** – better price at Primary Exchange mid price
- (3) **Inside BBO ("IN")** – better price inside Primary Exchange BBO excluding mid price
- (4) **Equal ("EQ")** – equal price to Primary Exchange BBO
- (5) **Worse ("WO")** – worse price than Primary Exchange

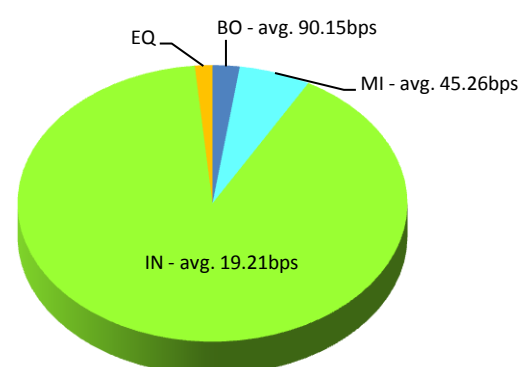
### MIZUHO(8411.T)



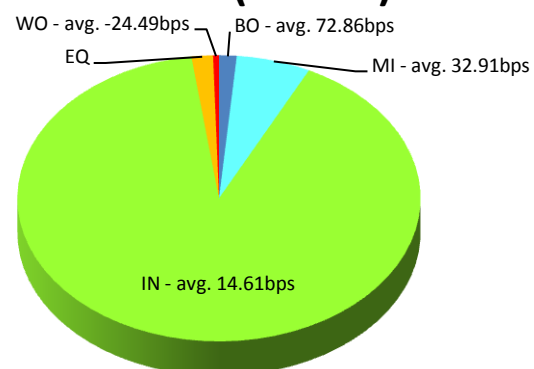
### HIT-ZOS(7004.T)



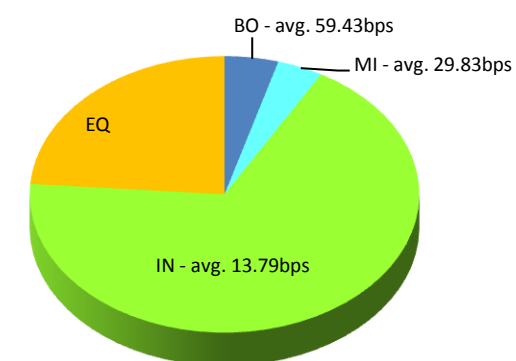
### TOYOBO(3101.T)



### NP-LMTL(5701.T)



### SMI-MTI(5405.T)



Note1: Excluded the executions from: before 9AM, lunch break, and after 3PM

Note2: Price improvement is calculated by comparing the execution price against the primary market's best bid for each sell or best offer for each buy at the point of execution and is calculated from the perspective of the Taker side of the trade



# Top 5 ETFs & REITs of The Week

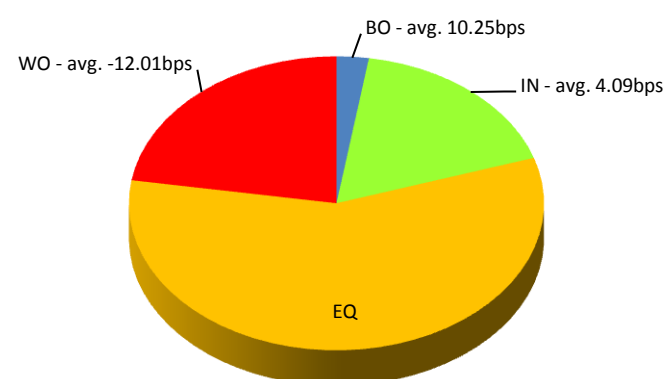
## Weekly Total in Week of 20-June-2011

Symbol	Description	Turnover (yen)	Last Price	Market Shr(%)	Avg Improvement(bps)
1321.OS	225FUND	341,498,116	9,870	2.07	4.09
1330.T	IDXF225	31,515,400	9,910	0.18	4.08
1306.T	TOPIX F	30,054,638	859	0.24	3.50
3226.T	ACCOMMO	2,958,400	588,000	0.30	22.28
1320.OS	ETF225	2,753,940	9,850	0.07	4.08

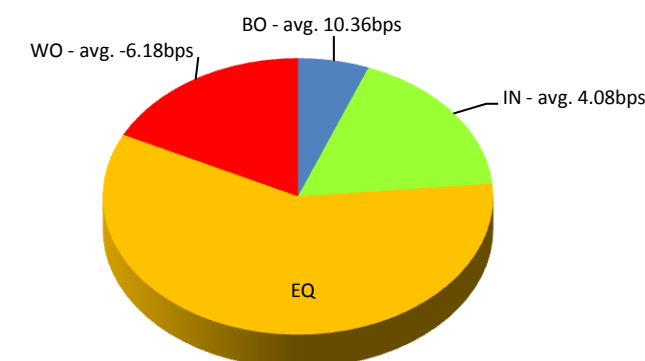
### Execution improvement patterns categorized into 5 groups.

- (1) **Better Outside ("BO")** – better price outside the Primary Exchange spread
- (2) **Mid Price ("MI")** – better price at Primary Exchange mid price
- (3) **Inside BBO ("IN")** – better price inside Primary Exchange BBO excluding mid price
- (4) **Equal ("EQ")** – equal price to Primary Exchange BBO
- (5) **Worse ("WO")** – worse price than Primary Exchange

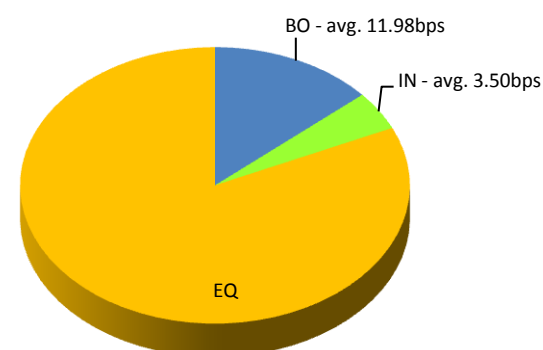
**225FUND(1321.OS)**



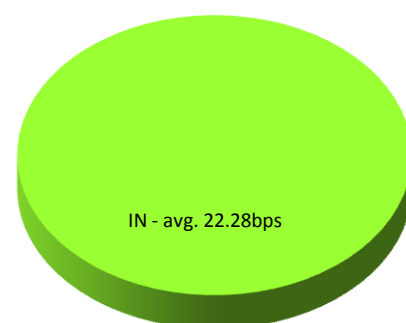
**IDXF225(1330.T)**



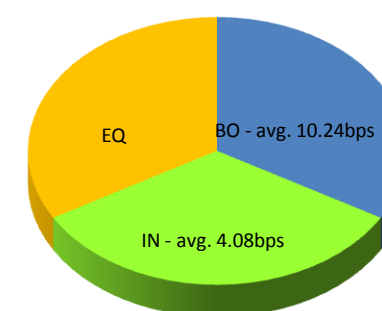
**TOPIX F(1306.T)**



**ACCOMMO(3226.T)**



**ETF225(1320.OS)**



Note1: Excluded the executions from before 9AM, lunch break, and after 3PM

Note2: Price improvement is calculated by comparing the execution price against the primary market's best bid for each sell or best offer for each buy at the point of execution and is calculated from the perspective of the Taker side of the trade