
SBI Japannext Weekly Statistics

13-June-2011

Japannext PTS

SBI Japannext Co., Ltd

Disclaimer

Information provided is for reference purposes only and does not constitute financial product advice nor is constituted as an offer to sell or solicitation to buy any security. The ownership and intellectual property rights of this information are solely and exclusively belong to SBI Japannext Co.,Ltd.("SBIJ") . According users are permitted to access and use the Information for their own personal, non-commercial and internal-use-only. Although SBIJ has made every effort to ensure the accuracy of the information as at the date of publication, SBIJ does not give any warranty as to the accuracy, reliability or completeness of the information. To the extent permitted by law, SBIJ and its employees, officers and contractors shall not be liable for any loss or damage arising in any way (including by way of negligence) from or in connection with any information provided or omitted or from anyone acting or refraining to act in reliance on this information.

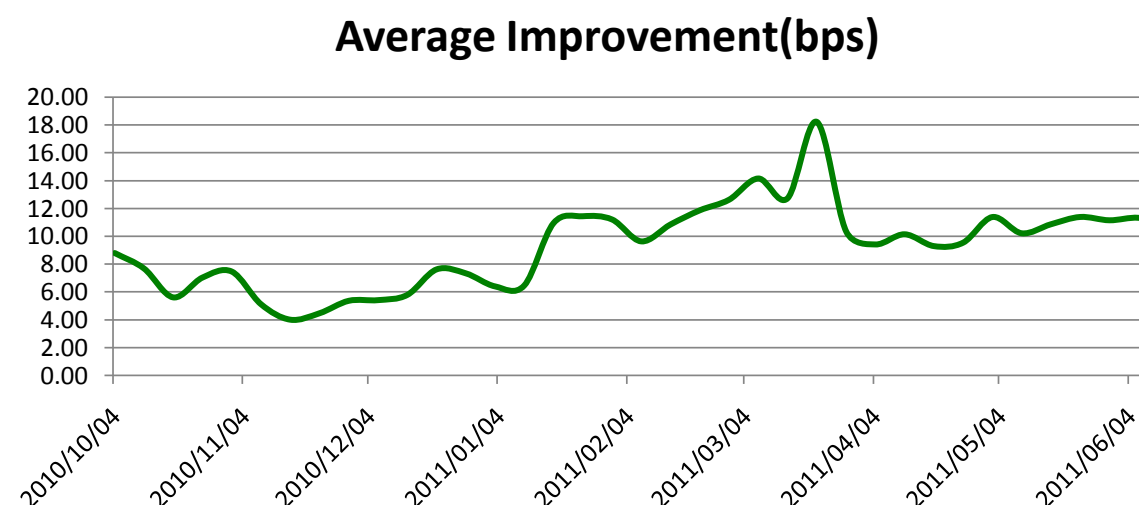
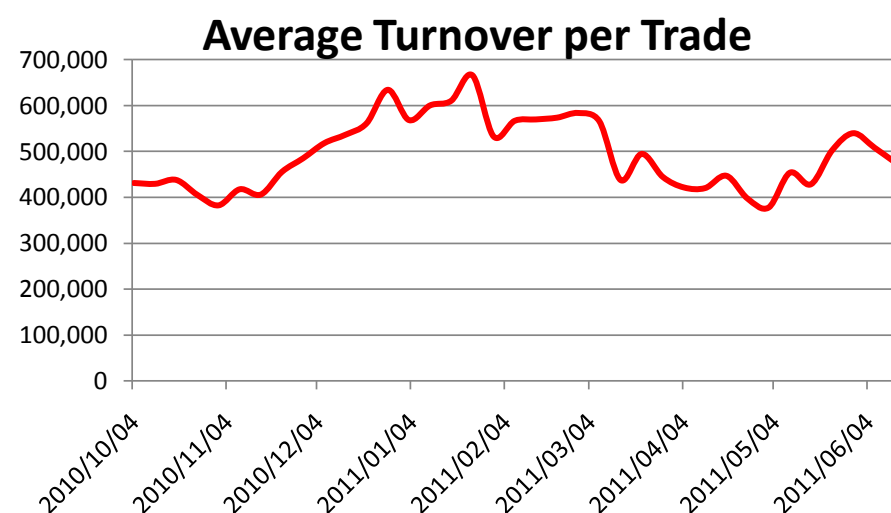
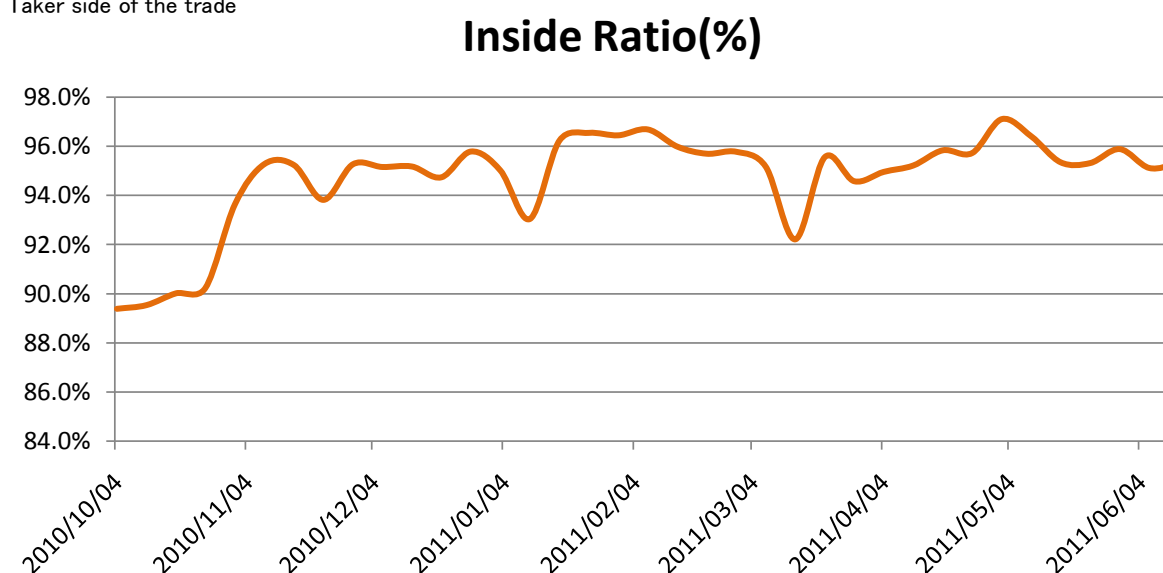
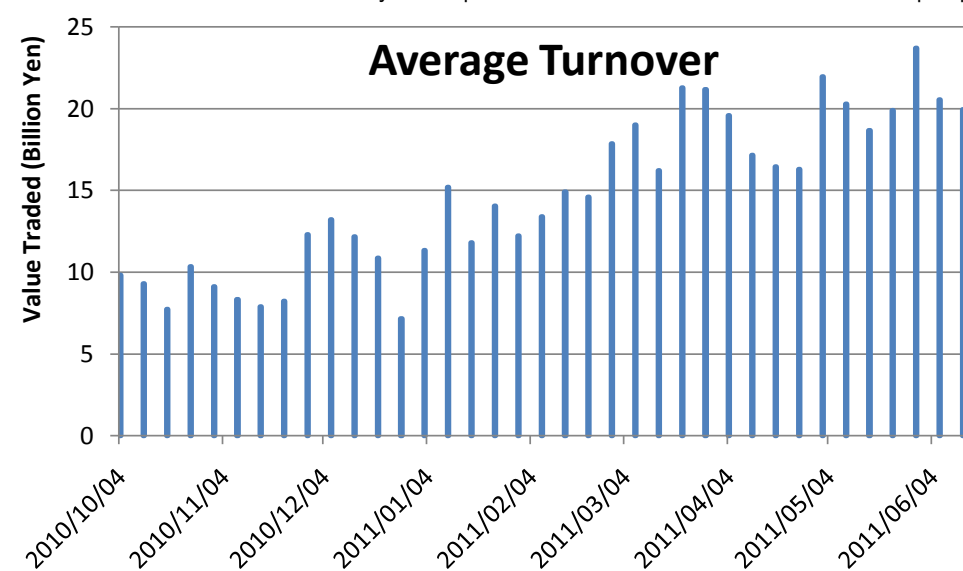


Daily Average Statistics of The Week

Daily Average in Week of 13-June-2011

| | # of Shares Traded | Turnover (Yen) | Universe | No of Trades | % of Inside | Avg Improvement(bps) |
|--------------|--------------------|-----------------------|------------|---------------|---------------|----------------------|
| Total | 35,360,323 | 19,944,508,602 | 729 | 41,981 | 95.31% | 10.78 |
| Large CAP | 17,469,088 | 12,045,351,292 | 100 | 16,967 | 94.78% | 18.39 |
| Mid CAP | 16,070,556 | 7,010,575,166 | 385 | 20,558 | 95.96% | 2.13 |
| Small CAP | 1,820,679 | 888,582,144 | 244 | 4,456 | 94.34% | 23.08 |

*Price improvement is calculated by comparing the execution price against the primary market's best bid for each sell or best offer for each buy at the point of execution and is calculated from the perspective of the Taker side of the trade





Top 5 Average Turnover of The Week

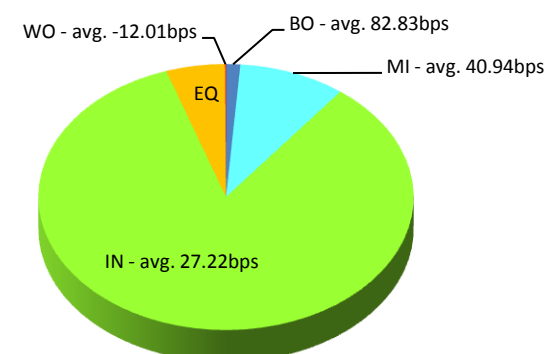
Weekly Total in Week of 13-June-2011

| Symbol | Description | Turnover (yen) | Last Price | Market Shr(%) | Avg Improvement(bps) |
|--------|-------------|----------------|------------|---------------|----------------------|
| 8411.T | MIZUHO | 2,832,915,970 | 121 | 5.83 | 28.57 |
| 7203.T | TOYOTA | 2,575,312,850 | 3,175 | 2.50 | 5.34 |
| 7751.T | CANON | 2,521,929,600 | 3,690 | 3.42 | 3.72 |
| 9984.T | SOFTBNK | 2,413,819,660 | 2,860 | 2.24 | 3.08 |
| 7267.T | HONDA | 2,265,382,500 | 2,927 | 2.52 | 1.99 |

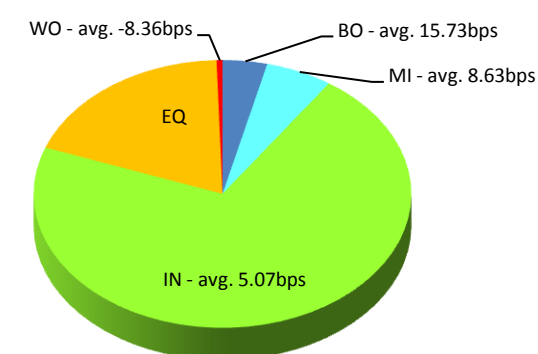
Execution improvement patterns categorized into 5 groups.

- (1) **Better Outside ("BO")** – better price outside the Primary Exchange spread
- (2) **Mid Price ("MI")** – better price at Primary Exchange mid price
- (3) **Inside BBO ("IN")** – better price inside Primary Exchange BBO excluding mid price
- (4) **Equal ("EQ")** – equal price to Primary Exchange BBO
- (5) **Worse ("WO")** – worse price than Primary Exchange

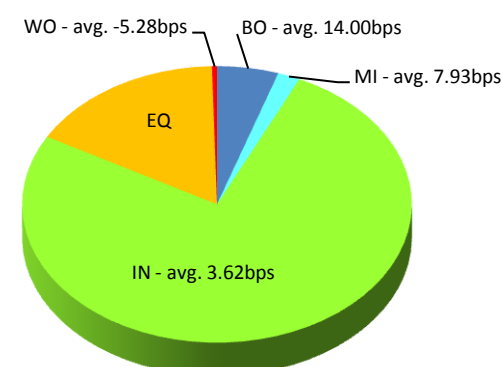
MIZUHO(8411.T)



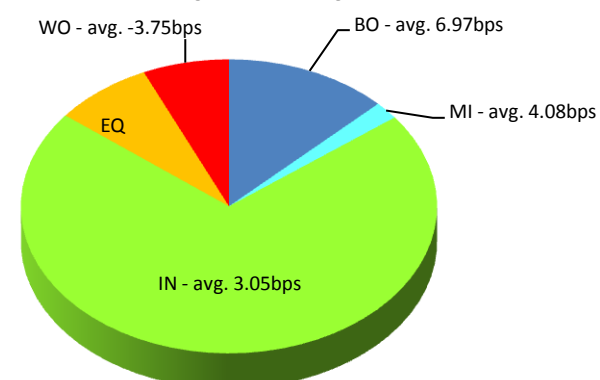
TOYOTA(7203.T)



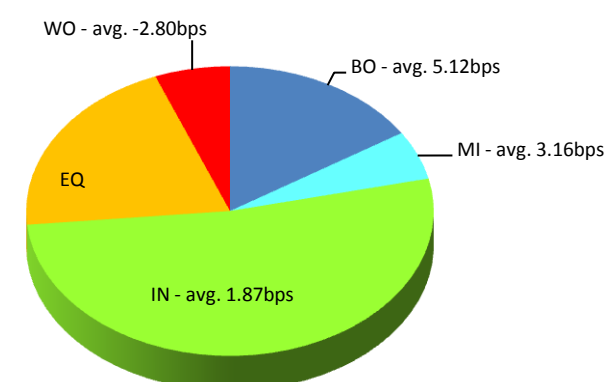
CANON(7751.T)



SOFTBNK(9984.T)



HONDA(7267.T)



Note1: Excluded the executions from: before 9AM, lunch break, and after 3PM

Note2: Price improvement is calculated by comparing the execution price against the primary market's best bid for each sell or best offer for each buy at the point of execution and is calculated from the perspective of the Taker side of the trade



Top 5 Average Improvement of The Week*

* Weekly Total Turnover > 100 Million Yen

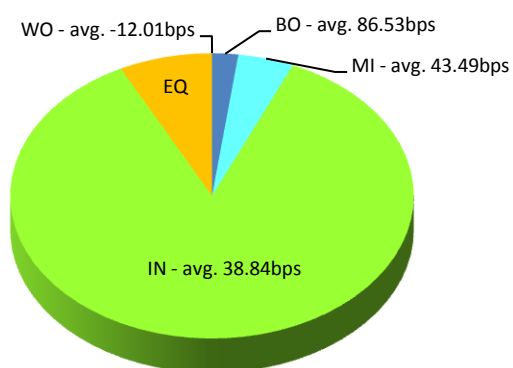
Weekly Total in Week of 13-June-2011

| Symbol | Description | Turnover (yen) | Last Price | Market Shr(%) | Avg Improvement(bps) |
|--------|-------------|----------------|------------|---------------|----------------------|
| 7004.T | HIT-ZOS | 122,664,850 | 116 | 12.30 | 39.07 |
| 8411.T | MIZUHO | 2,832,915,970 | 121 | 5.83 | 28.57 |
| 3101.T | TOYOBO | 100,824,400 | 108 | 5.13 | 20.73 |
| 7003.T | MTI-E&S | 231,552,100 | 164 | 6.57 | 17.49 |
| 2768.T | SOJITZ | 190,157,970 | 139 | 6.45 | 15.46 |

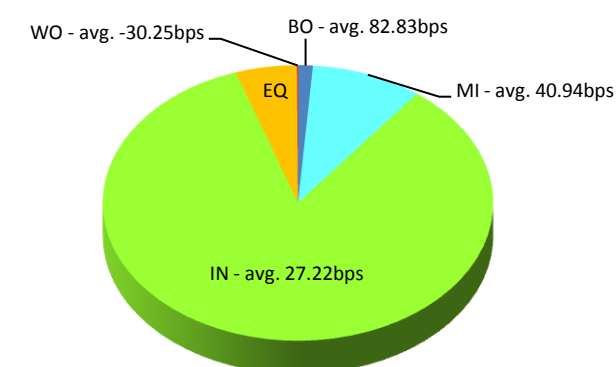
Execution improvement patterns categorized into 5 groups.

- (1) **Better Outside** ("BO") – better price outside the Primary Exchange spread
- (2) **Mid Price** ("MI") – better price at Primary Exchange mid price
- (3) **Inside BBO** ("IN") – better price inside Primary Exchange BBO excluding mid price
- (4) **Equal** ("EQ") – equal price to Primary Exchange BBO
- (5) **Worse** ("WO") – worse price than Primary Exchange

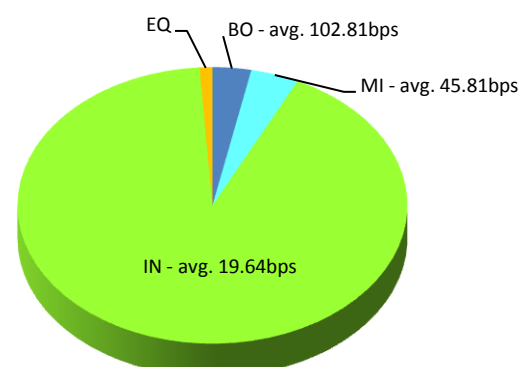
HIT-ZOS(7004.T)



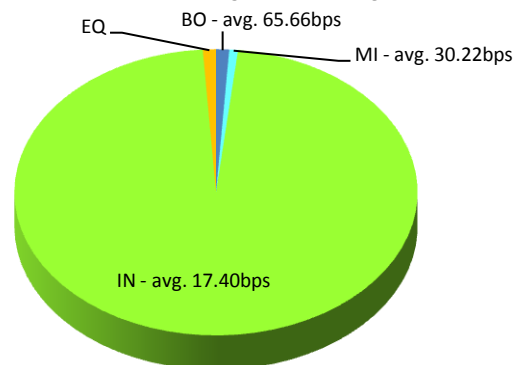
MIZUHO(8411.T)



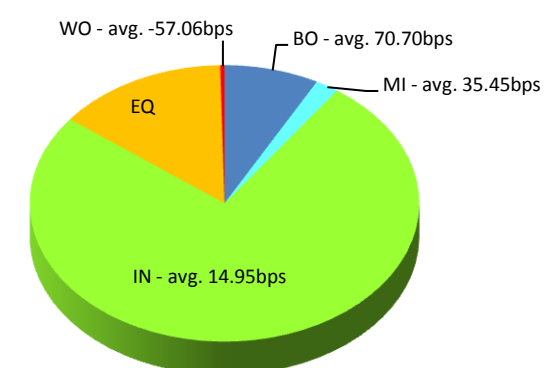
TOYOBO(3101.T)



MTI-E&S(7003.T)



SOJITZ(2768.T)



Note1: Excluded the executions from: before 9AM, lunch break, and after 3PM

Note2: Price improvement is calculated by comparing the execution price against the primary market's best bid for each sell or best offer for each buy at the point of execution and is calculated from the perspective of the Taker side of the trade



Top 5 ETFs & REITs of The Week

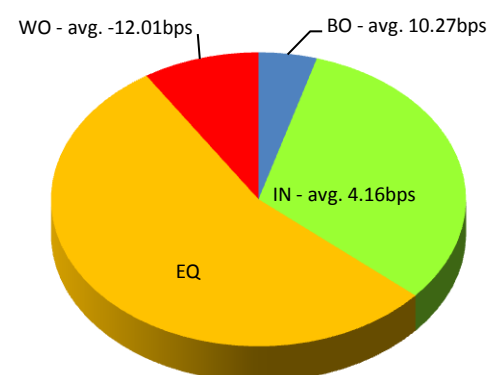
Weekly Total in Week of 13-June-2011

| Symbol | Description | Turnover (yen) | Last Price | Market Shr(%) | Avg Improvement(bps) |
|---------|-------------|----------------|------------|---------------|----------------------|
| 1321.OS | 225FUND | 56,150,512 | 9,610 | 0.21 | 4.16 |
| 1330.T | IDXF225 | 11,507,200 | 9,770 | 0.06 | 0.00 |
| 1306.T | TOPIX F | 10,748,352 | 829 | 0.18 | 3.58 |
| 1320.OS | ETF225 | 6,568,300 | 9,590 | 0.14 | 2.06 |
| 8952.T | JRE | 782,000 | 784,000 | 0.03 | 0.00 |

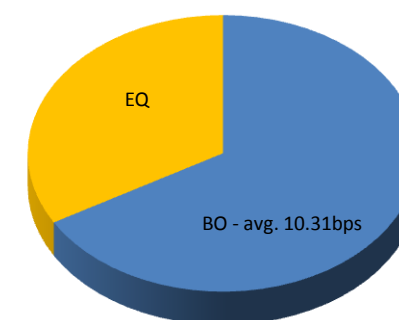
Execution improvement patterns categorized into 5 groups.

- (1) **Better Outside ("BO")** – better price outside the Primary Exchange spread
- (2) **Mid Price ("MI")** – better price at Primary Exchange mid price
- (3) **Inside BBO ("IN")** – better price inside Primary Exchange BBO excluding mid price
- (4) **Equal ("EQ")** – equal price to Primary Exchange BBO
- (5) **Worse ("WO")** – worse price than Primary Exchange

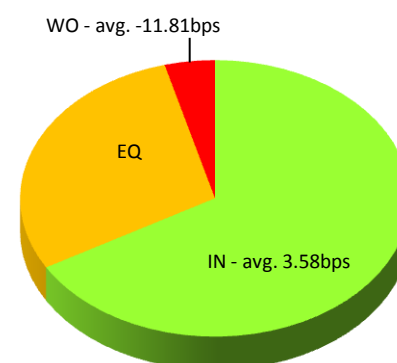
225FUND(1321.OS)



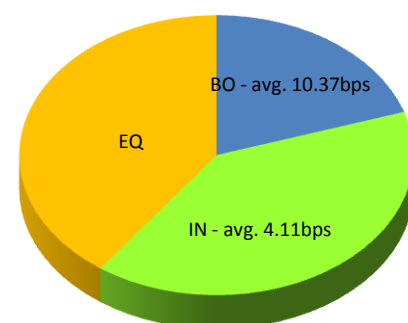
IDXF225(1330.T)



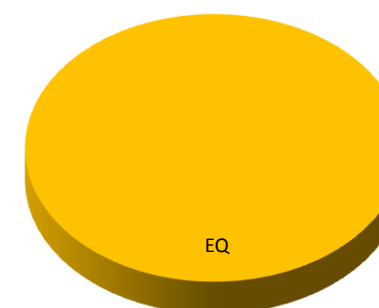
TOPIX F(1306.T)



ETF225(1320.OS)



JRE(8952.T)



Note1: Excluded the executions from before 9AM, lunch break, and after 3PM

Note2: Price improvement is calculated by comparing the execution price against the primary market's best bid for each sell or best offer for each buy at the point of execution and is calculated from the perspective of the Taker side of the trade