

Monthly Statistics

Oct-2011

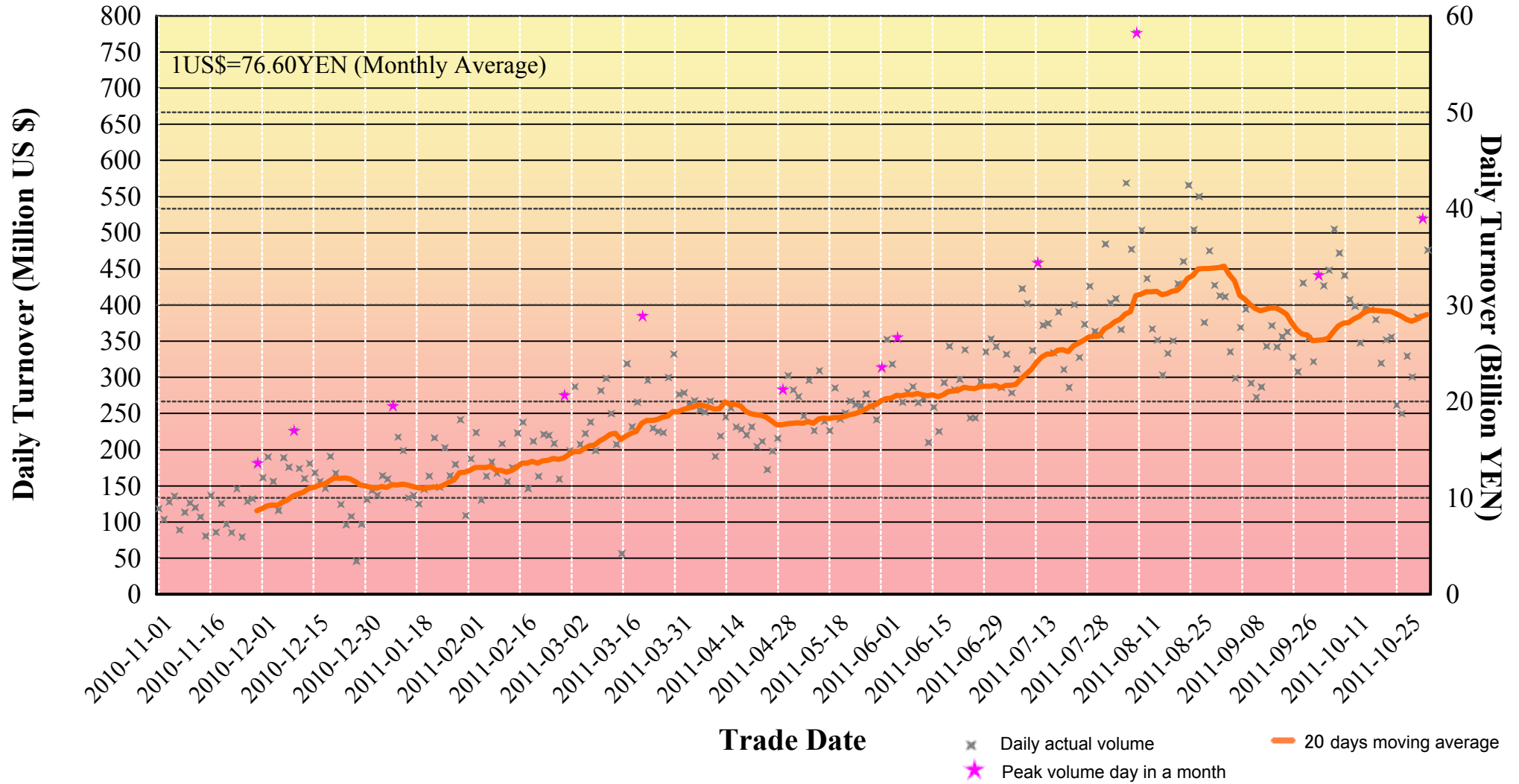
Japannext PTS

SBI Japannext Co., Ltd

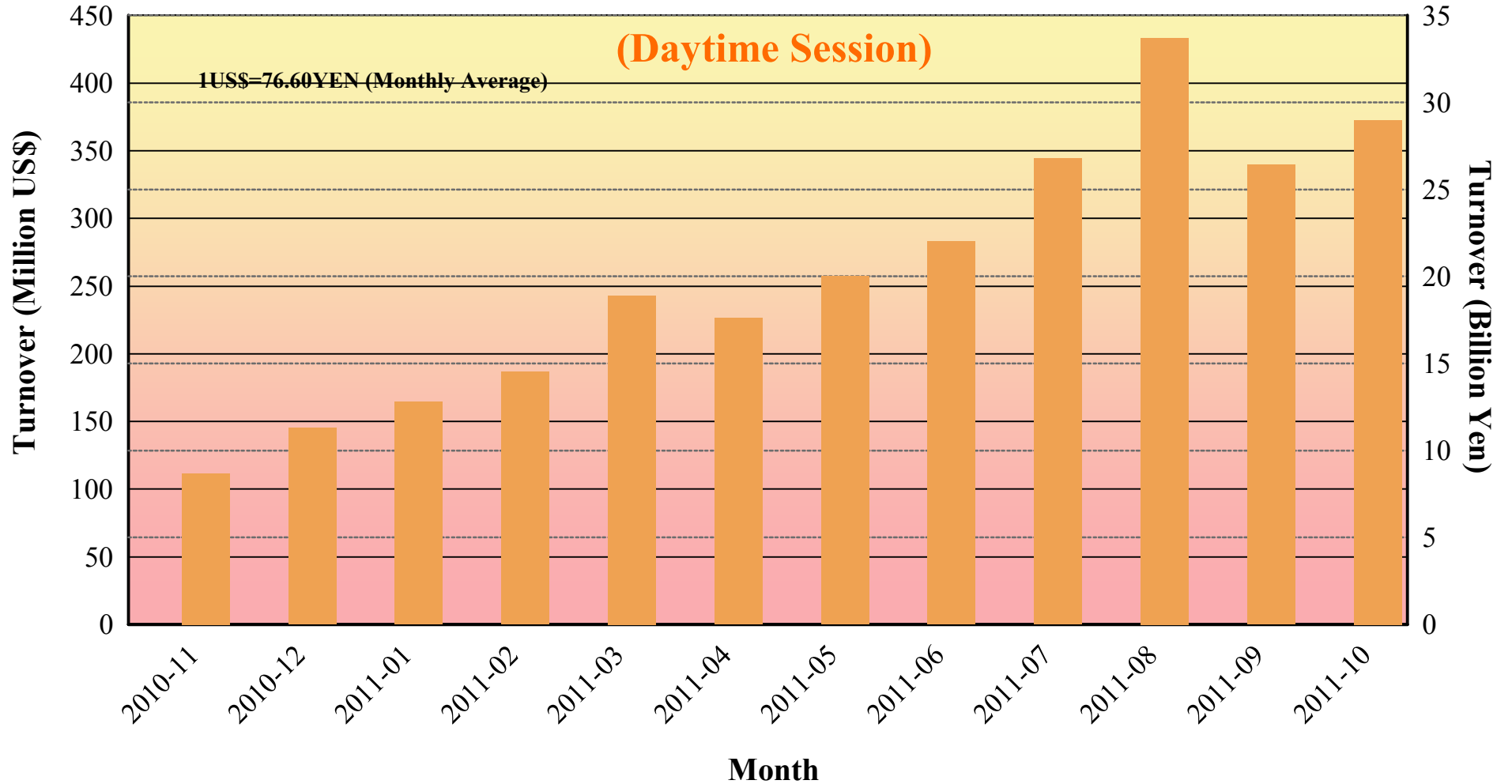
Disclaimer

Information provided is for reference purposes only and does not constitute financial product advice nor is constituted as an offer to sell or solicitation to buy any security. The ownership and intellectual property rights of this information are solely and exclusively belong to SBI Japannext Co.,Ltd.(“SBIJ”). According users are permitted to access and use the Information for their own personal, non-commercial and internal-use-only. Although SBIJ has made every effort to ensure the accuracy of the information as at the date of publication, SBIJ does not give any warranty as to the accuracy, reliability or completeness of the information. To the extent permitted by law, SBIJ and its employees, officers and contractors shall not be liable for any loss or damage arising in any way (including by way of negligence) from or in connection with any information provided or omitted or from anyone acting or refraining to act in reliance on this information.

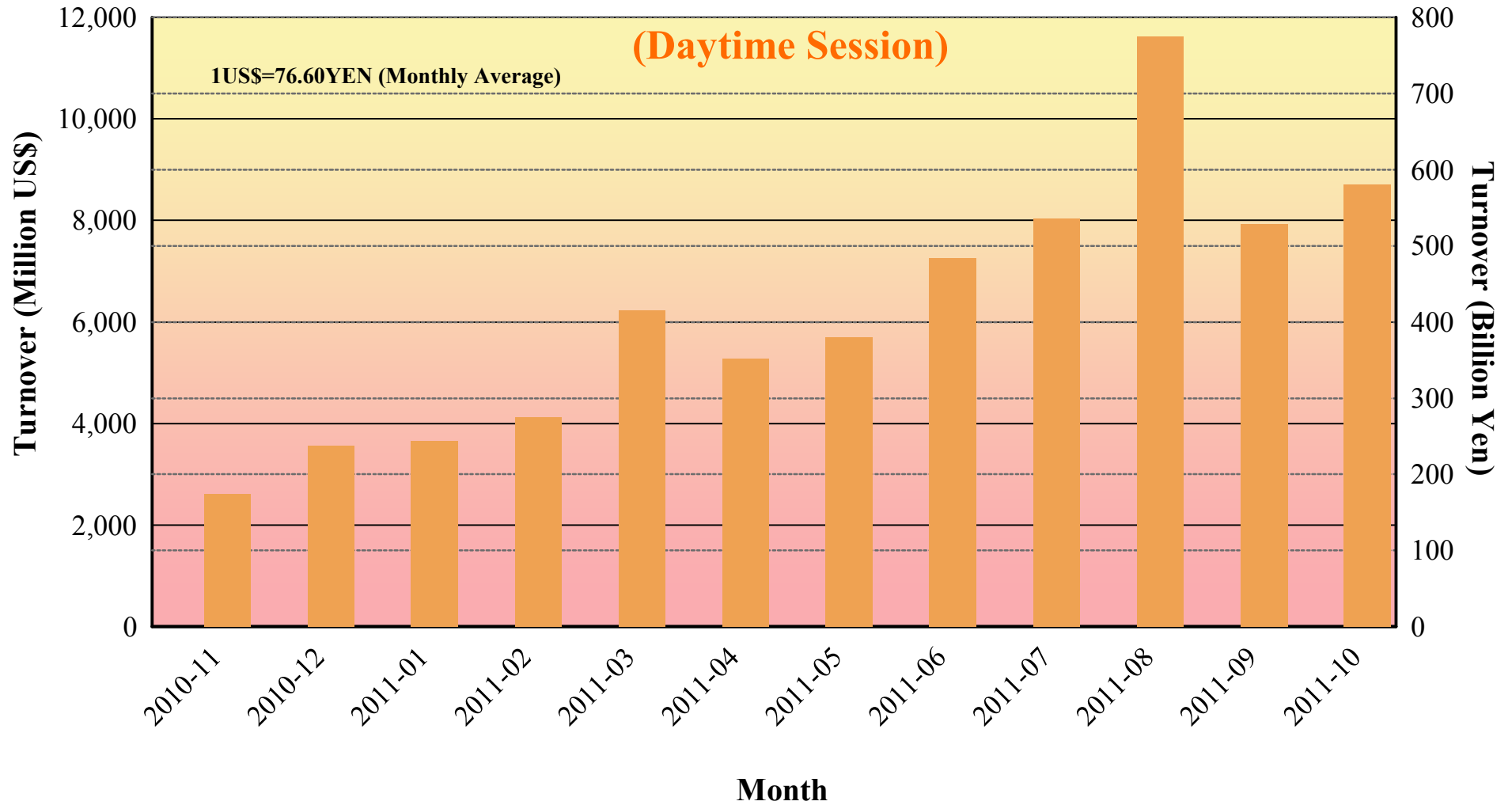
Daily Turnover of Daytime Session



Average Daily Turnover by Month

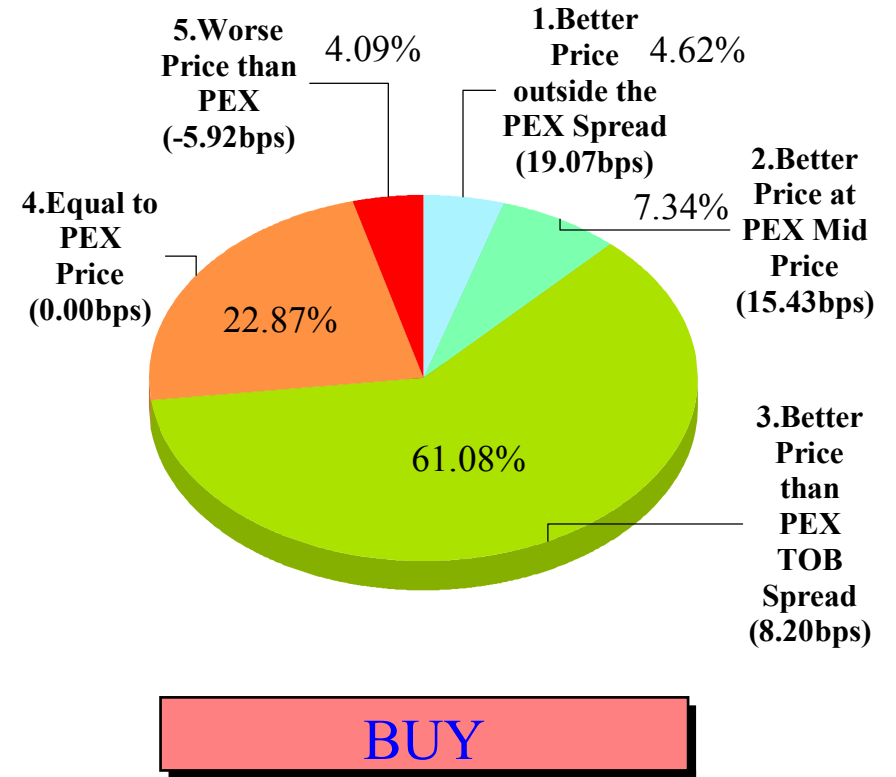
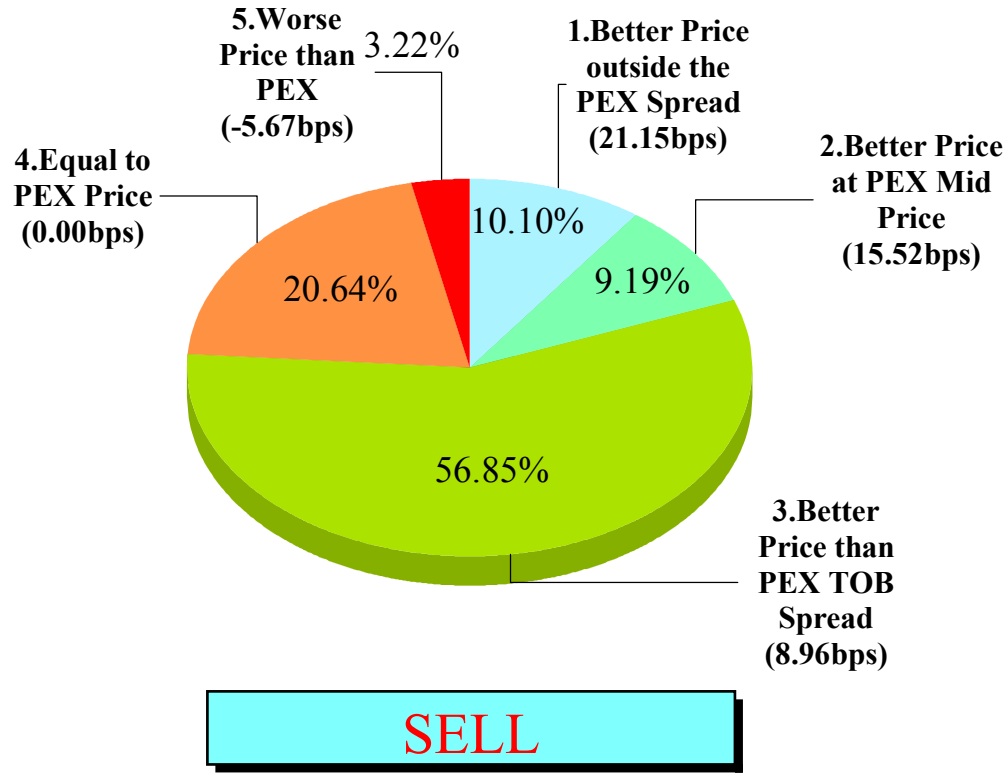


Total Turnover by Month



"Daytime Session" Execution

Nikkei 225 (Oct-2011)

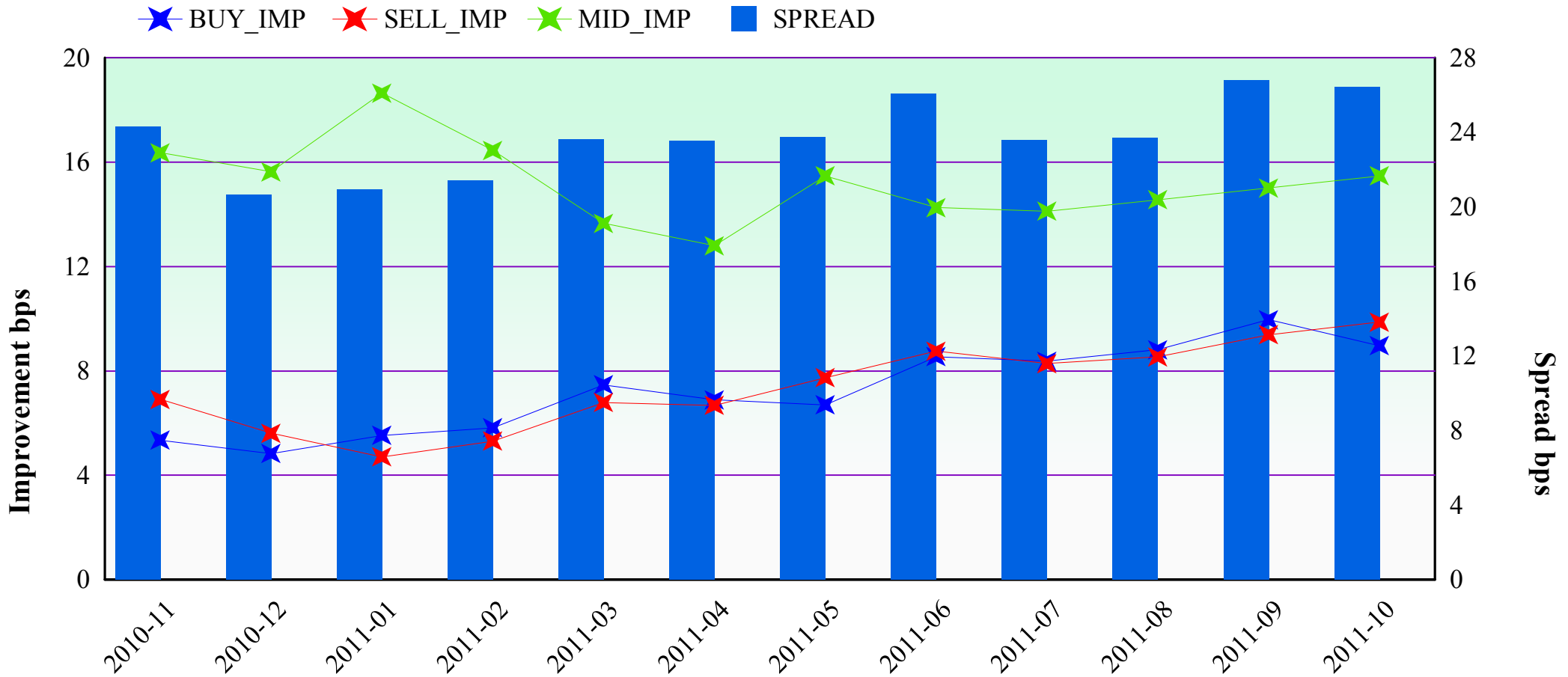


Note1: Excluded the executions from before 9AM, lunch break, and after 3PM

Note2: Avg. Price Improvement are based on Japannext vs. Primary Exchange prices

Improvement of Execution (bps)

Nikkei 225 (Oct-2011)



Note1: Excluded the executions from before 9AM, lunch break, and after 3PM

Note2: Avg. Price Improvements are based on Japannext vs. Primary Exchange prices

Monthly Turnover Top 50 Names in Daytime session (Oct-2011)

1US\$=76.60YEN (Monthly Average)

	SYMBOL	DESCRIPTION	Turnover (Million US\$)	Market-share (%)
1	8411	MIZUHO	218.59	8.37
2	7751	CANON	165.88	5.14
3	6954	FANUC	162.96	3.61
4	8306	MUFG	161.99	4.45
5	4502	TAKEDAP	131.30	7.60
6	8316	SMFG	116.32	2.92
7	9432	NTT	115.14	3.63
8	9433	KDDI	110.88	4.49
9	2914	JT	109.42	4.16
10	7203	TOYOTA	106.43	2.51
11	7201	NISSAN	102.10	3.84
12	8058	MITBISI	99.17	2.27
13	6301	KOMATSU	95.22	2.17
14	7267	HONDA	89.11	2.31
15	6501	HITACHI	83.84	2.87
16	4523	EISAI	78.53	7.60
17	6502	TOSHIBA	78.21	3.01
18	8035	TKOELCN	77.50	3.49
19	6758	SONY	68.54	2.29
20	4063	SINETUC	67.06	5.03
21	9983	FASTRET	66.86	2.87
22	6752	PANASNIC	66.16	4.09
23	8604	NOMRAHD	64.86	3.42
24	8001	ITOCHU	63.81	3.86
25	9984	SOFTBNK	63.72	1.22

	SYMBOL	DESCRIPTION	Turnover (Million US\$)	Market-share (%)
26	8308	RESONA	61.84	4.31
27	8053	SMITOMO	58.96	4.07
28	6971	KYOCERA	58.16	4.06
29	9020	JR EAST	53.77	4.81
30	8801	MTI-FU	53.26	4.48
31	1605	INPEX	52.93	3.36
32	8591	ORIX	52.74	2.89
33	8802	MTB-EST	52.40	4.08
34	6594	NIDEC	51.66	2.92
35	6503	MELCO	51.22	3.84
36	6753	SHARP	48.72	2.99
37	3402	TORAY	48.61	4.49
38	8031	MITSUI	47.84	1.44
39	9437	DOCOMO	45.47	2.17
40	6326	KUBOTA	45.26	4.85
41	8267	AEON	43.35	4.48
42	8830	SMIRE&D	42.47	4.57
43	8002	MARBENI	41.15	2.42
44	3382	7&I-HD	40.19	2.12
45	9501	TEPCO	38.64	0.78
46	9735	SECOM	38.32	5.05
47	7011	MHI	37.82	2.77
48	5201	ASA-GLS	37.68	3.63
49	9831	YAMDADK	37.48	4.41
50	9021	JR WEST	37.36	4.96

Improvement of Monthly Turnover for Top 25 Names (Oct-2011)

(Daytime Session)

	RIC	NAME	Sell Executions							Improve Avg. BPS	Buy Executions							Improve Avg. BPS
			Worse(A)		Equal(B)		Better(C)		(B) + (C)		Worse(A)		Equal(B)		Better(C)		(B) + (C)	
1	8411.T	MIZUHO	73	0.28%	2,048	7.79%	24,175	91.93%	99.72%	31.62	52	0.25%	1,352	6.59%	19,115	93.16%	99.75%	32.46
2	7751.T	CANON	57	1.19%	920	19.19%	3,818	79.62%	98.81%	5.34	75	1.46%	1,339	26.01%	3,735	72.54%	98.54%	4.93
3	6954.T	FANUC	184	7.09%	503	19.38%	1,908	73.53%	92.91%	3.72	248	5.54%	796	17.78%	3,434	76.69%	94.46%	2.99
4	8306.T	MUFG	80	0.73%	1,226	11.14%	9,698	88.13%	99.27%	11.24	96	0.90%	1,504	14.10%	9,063	84.99%	99.10%	10.45
5	4502.T	TAKEDAP	18	0.47%	397	10.36%	3,416	89.17%	99.53%	4.07	52	1.34%	461	11.90%	3,361	86.76%	98.66%	3.89
6	8316.T	SMFG	500	6.82%	2,044	27.86%	4,792	65.32%	93.18%	2.94	565	9.47%	2,404	40.31%	2,995	50.22%	90.53%	2.72
7	9432.T	NTT	26	0.71%	501	13.73%	3,121	85.55%	99.29%	5.07	43	1.31%	673	20.48%	2,570	78.21%	98.69%	4.53
8	9433.T	KDDI	41	1.80%	316	13.87%	1,922	84.34%	98.20%	5.50	72	2.43%	269	9.08%	2,620	88.48%	97.57%	4.87
9	2914.T	JT	132	4.09%	537	16.63%	2,560	79.28%	95.91%	3.96	82	2.35%	486	13.93%	2,920	83.72%	97.65%	4.60
10	7203.T	TOYOTA	537	8.68%	2,169	35.06%	3,480	56.26%	91.32%	2.76	520	8.36%	2,433	39.12%	3,267	52.52%	91.64%	2.26
11	7201.T	NISSAN	139	2.01%	1,288	18.62%	5,490	79.37%	97.99%	7.05	224	3.27%	1,459	21.32%	5,160	75.41%	96.73%	5.02
12	8058.T	MITBISI	344	6.30%	2,115	38.71%	3,004	54.99%	93.70%	3.82	431	6.84%	2,770	43.95%	3,101	49.21%	93.16%	3.49
13	6301.T	KOMATSU	348	6.98%	1,667	33.45%	2,969	59.57%	93.02%	4.06	755	9.28%	2,492	30.62%	4,892	60.11%	90.72%	3.39
14	7267.T	HONDA	564	9.33%	1,942	32.13%	3,538	58.54%	90.67%	3.59	715	11.20%	2,492	39.03%	3,178	49.77%	88.80%	2.88
15	6501.T	HITACHI	51	2.03%	415	16.51%	2,047	81.46%	97.97%	8.34	105	3.11%	361	10.69%	2,910	86.20%	96.89%	8.92
16	4523.T	EISAI	14	0.56%	198	7.90%	2,295	91.54%	99.44%	5.02	16	0.51%	503	16.13%	2,599	83.35%	99.49%	4.47
17	6502.T	TOSHIBA	64	1.80%	636	17.92%	2,849	80.28%	98.20%	10.28	94	2.37%	613	15.48%	3,254	82.15%	97.63%	9.55
18	8035.T	TKOELCN	107	4.15%	546	21.17%	1,926	74.68%	95.85%	5.57	121	3.26%	594	16.02%	2,994	80.72%	96.74%	4.43
19	6758.T	SONY	218	3.46%	2,128	33.73%	3,963	62.82%	96.54%	5.06	481	7.60%	2,556	40.38%	3,293	52.02%	92.40%	3.63
20	4063.T	SINETUC	67	2.99%	398	17.74%	1,779	79.28%	97.01%	4.95	121	4.04%	414	13.82%	2,461	82.14%	95.96%	3.94
21	9983.T	FASTRET	139	11.50%	250	20.68%	820	67.82%	88.50%	3.73	228	9.54%	464	19.41%	1,699	71.06%	90.46%	2.98
22	6752.T	PANASNIC	252	3.04%	1,991	24.05%	6,037	72.91%	96.96%	6.31	243	3.08%	2,061	26.16%	5,574	70.75%	96.92%	5.13
23	8604.T	NOMRAHD	108	1.13%	1,423	14.90%	8,017	83.97%	98.87%	13.73	153	1.08%	2,218	15.62%	11,830	83.30%	98.92%	10.86
24	8001.T	ITOCHE	127	2.17%	1,392	23.79%	4,331	74.03%	97.83%	6.55	183	2.83%	1,496	23.11%	4,795	74.07%	97.17%	4.75
25	9984.T	SOFTBNK	548	9.69%	1,818	32.14%	3,290	58.17%	90.31%	3.27	816	11.91%	2,051	29.93%	3,986	58.16%	88.09%	3.47

Note1: Excluded the executions from before 9AM, lunch break, and after 3PM

Note2: Avg. Price Improvement are based on Japannext vs. Primary Exchange prices