

# Monthly Statistics

Sep-2011

*Japannext PTS*

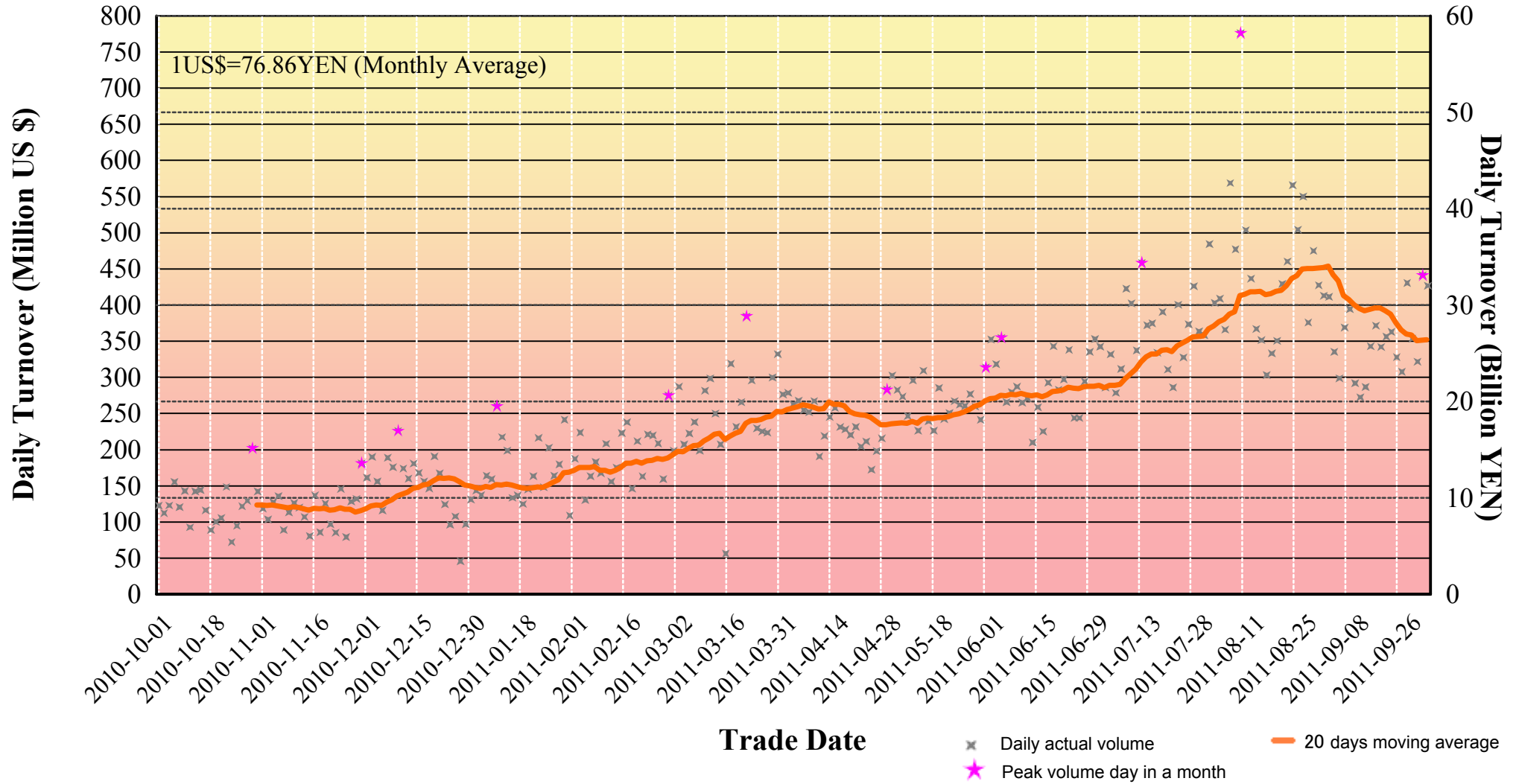
---

*SBI Japannext Co., Ltd*

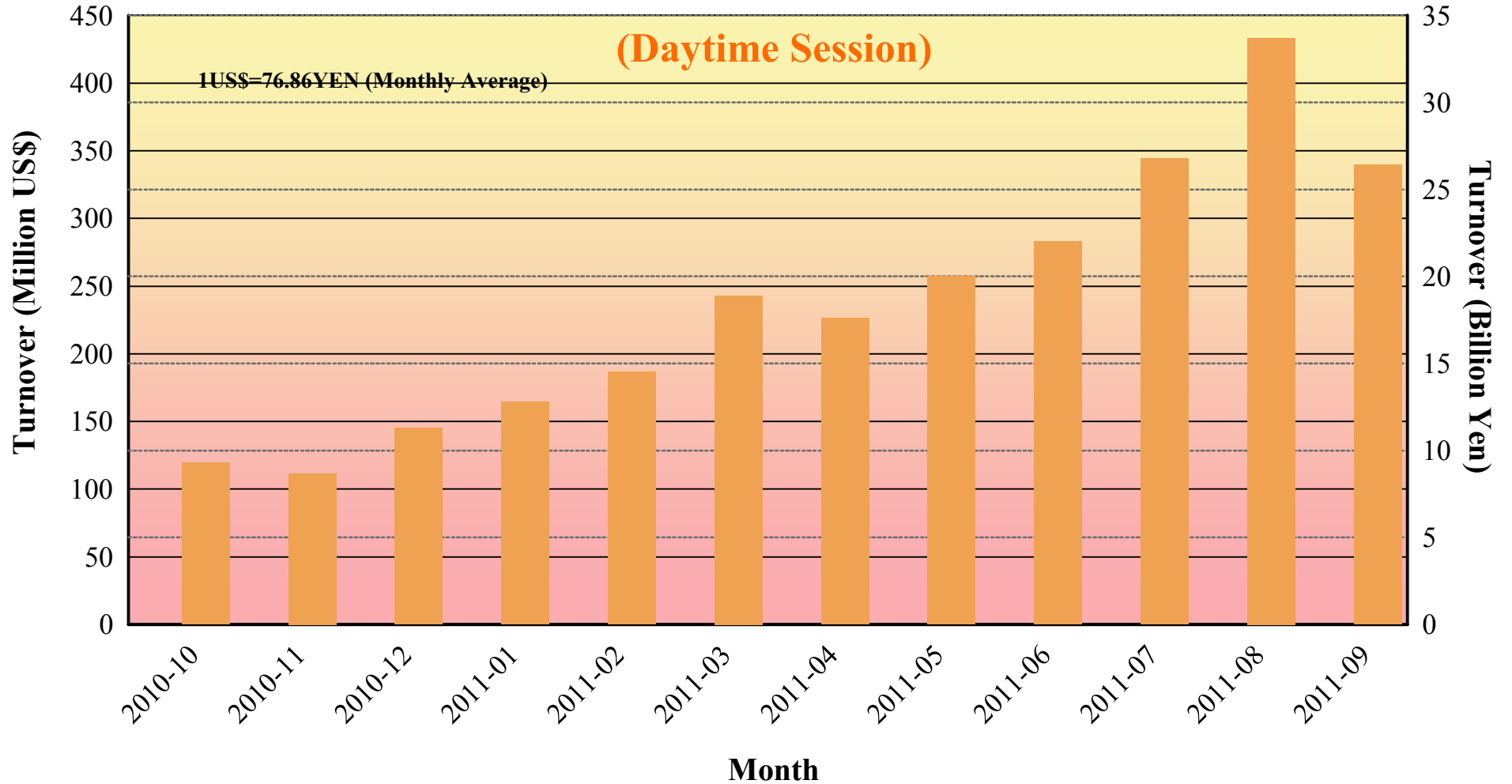
**Disclaimer**

Information provided is for reference purposes only and does not constitute financial product advice nor is constituted as an offer to sell or solicitation to buy any security. The ownership and intellectual property rights of this information are solely and exclusively belong to SBI Japannext Co.,Ltd.(“SBIJ”). According users are permitted to access and use the Information for their own personal, non-commercial and internal-use-only. Although SBIJ has made every effort to ensure the accuracy of the information as at the date of publication, SBIJ does not give any warranty as to the accuracy, reliability or completeness of the information. To the extent permitted by law, SBIJ and its employees, officers and contractors shall not be liable for any loss or damage arising in any way (including by way of negligence) from or in connection with any information provided or omitted or from anyone acting or refraining to act in reliance on this information.

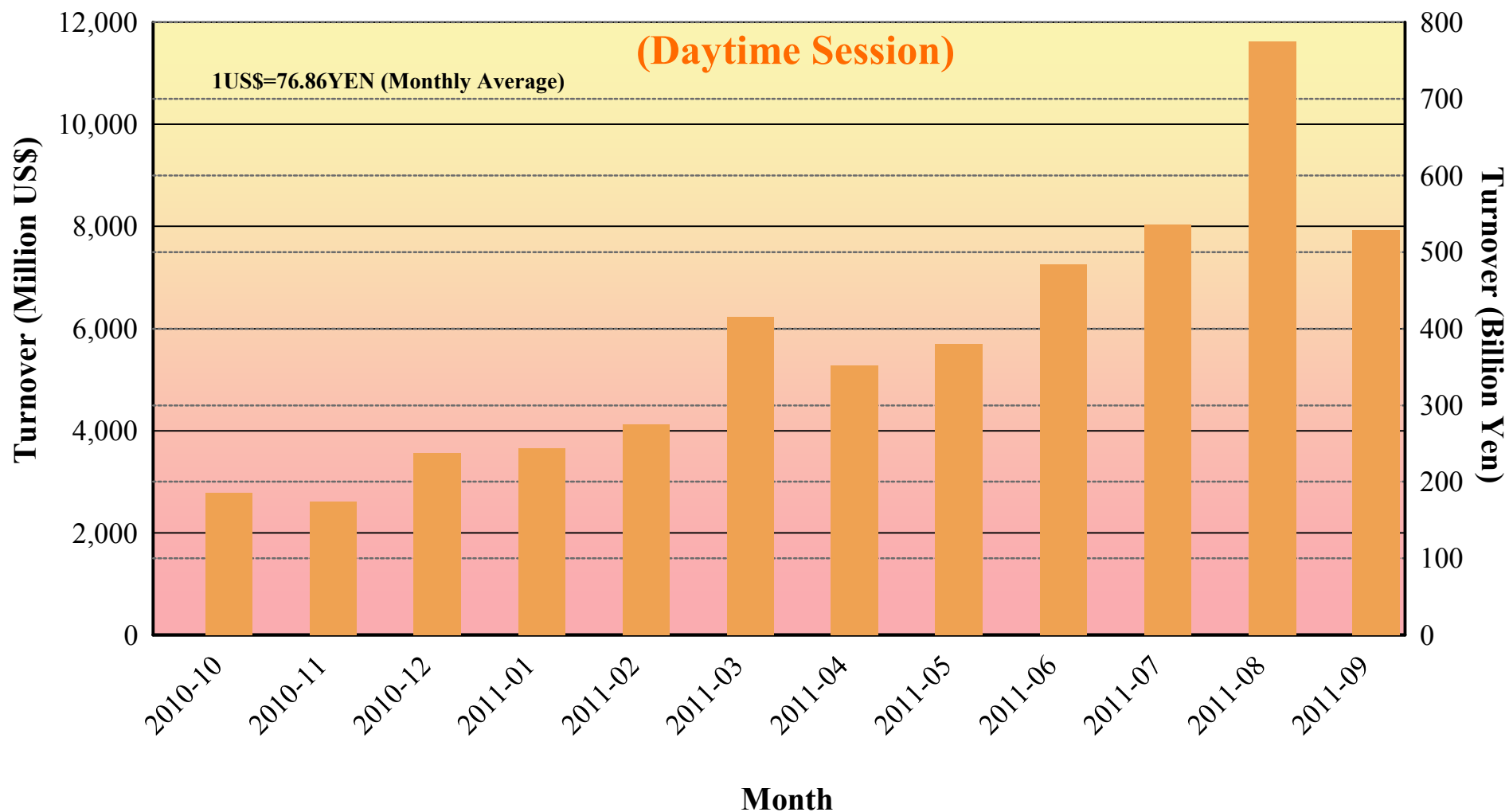
# Daily Turnover of Daytime Session



## Average Daily Turnover by Month

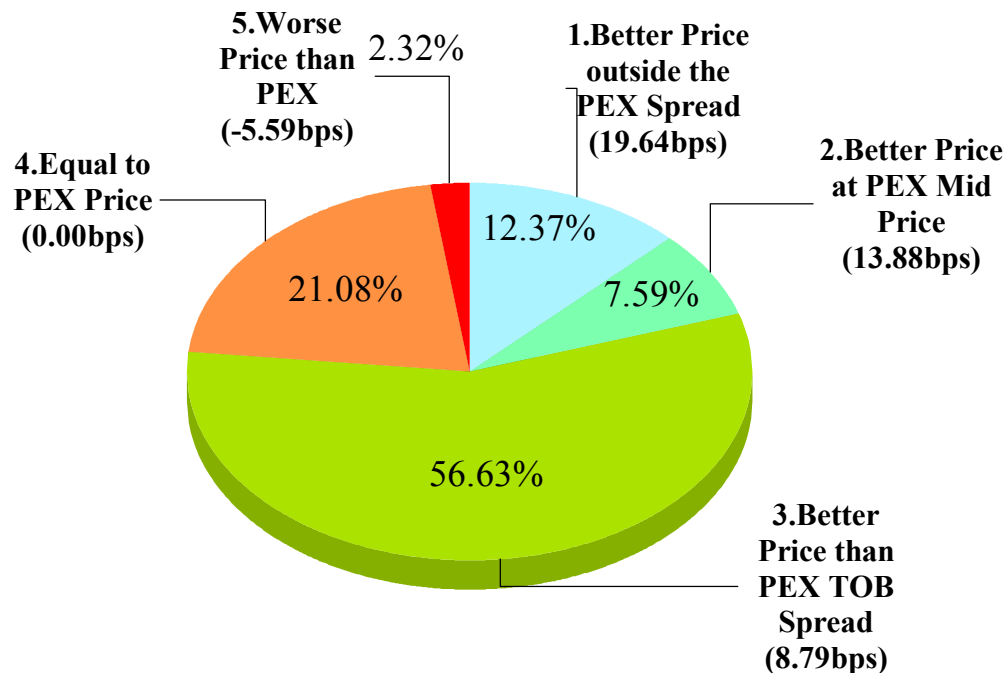


## Total Turnover by Month

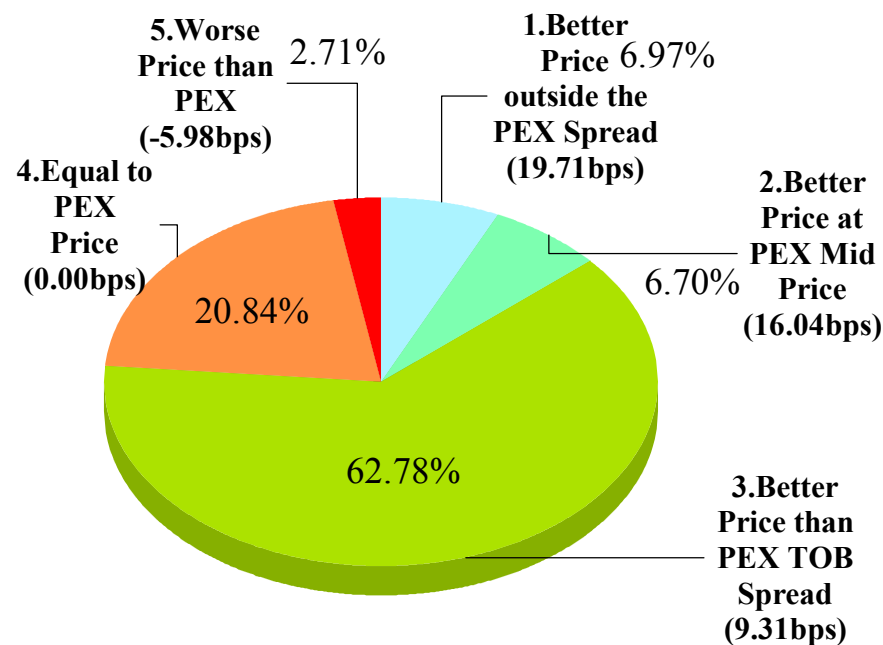


# "Daytime Session" Execution

**Nikkei 225 ( Sep-2011 )**



**SELL**



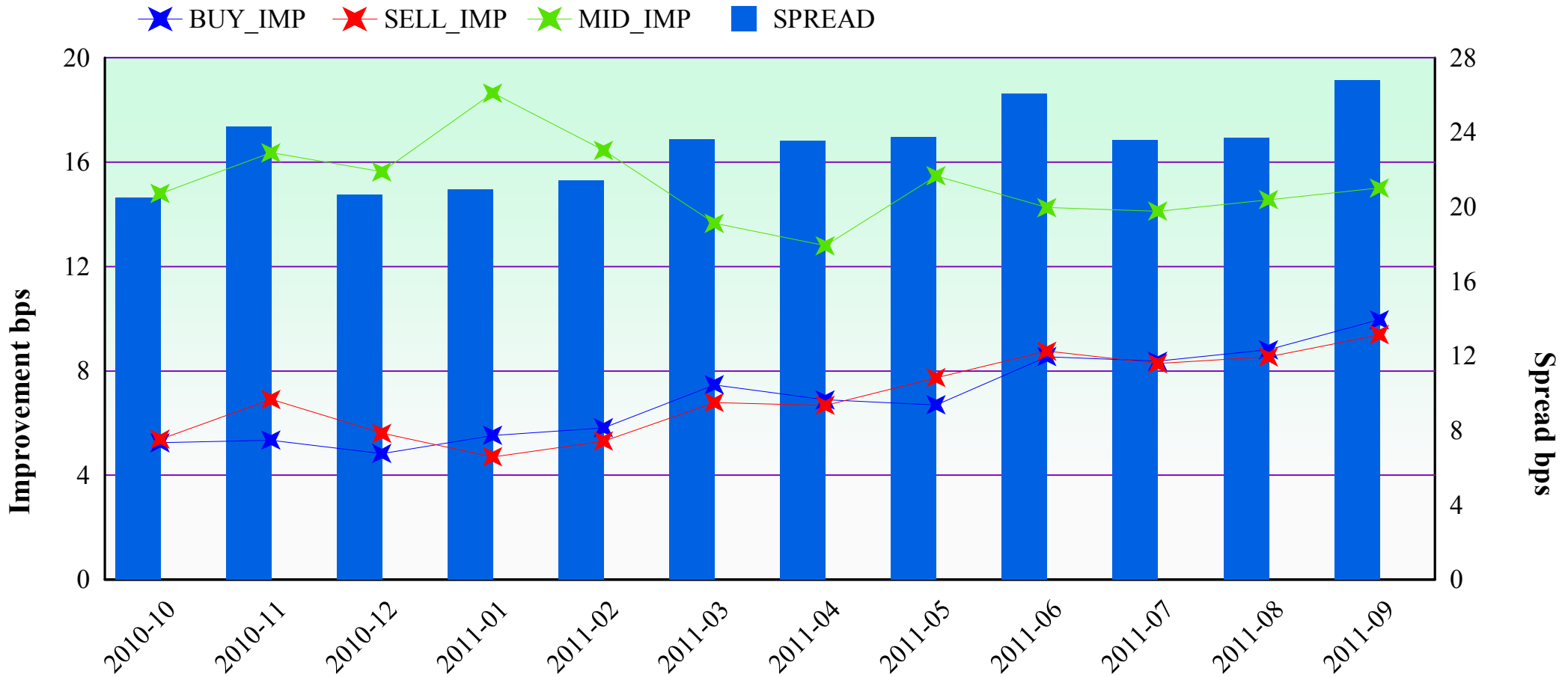
**BUY**

Note1: Excluded the executions from before 9AM, lunch break, and after 3PM

Note2: Avg. Price Improvement are based on Japannext vs. Primary Exchange prices

## Improvement of Execution (bps)

**Nikkei 225 ( Sep-2011 )**



Note1: Excluded the executions from before 9AM, lunch break, and after 3PM

Note2: Avg. Price Improvements are based on Japannext vs. Primary Exchange prices

# Monthly Turnover Top 50 Names in Daytime session (Sep-2011)

1US\$=76.86YEN (Monthly Average)

	SYMBOL	DESCRIPTION	Turnover (Million US\$)	Market-share (%)
1	8411	MIZUHO	250.43	8.95
2	4502	TAKEDAP	165.03	6.28
3	7751	CANON	161.52	4.22
4	8306	MUFG	148.49	4.15
5	9433	KDDI	143.85	3.53
6	6954	FANUC	127.74	2.28
7	9432	NTT	121.67	5.62
8	7203	TOYOTA	120.75	2.07
9	7201	NISSAN	111.25	3.32
10	2914	JT	86.20	2.90
11	7267	HONDA	84.32	2.28
12	8316	SMFG	83.58	1.99
13	8604	NOMRAHD	78.13	3.78
14	4523	EISAI	76.33	6.04
15	6301	KOMATSU	75.36	1.86
16	6502	TOSHIBA	71.88	2.42
17	8031	mitsui	71.80	2.52
18	8058	MITBISI	69.96	2.24
19	6501	HITACHI	69.68	2.51
20	6971	KYOCERA	61.33	3.60
21	9437	DOCOMO	60.62	2.39
22	6758	SONY	59.36	2.05
23	9984	SOFTBNK	59.19	0.96
24	8591	ORIX	59.02	2.69
25	8001	ITOCHU	58.86	3.51

	SYMBOL	DESCRIPTION	Turnover (Million US\$)	Market-share (%)
26	6752	PANASNIC	58.27	3.59
27	4063	SINETUC	54.07	3.37
28	9020	JR EAST	51.87	3.33
29	8035	TKOELCN	49.96	2.80
30	7974	NINTEND	48.49	1.60
31	3402	TORAY	48.37	3.59
32	1605	INPEX	47.81	3.07
33	8267	AEON	47.38	4.76
34	9983	FASTRET	47.02	1.63
35	7011	MHI	46.52	2.54
36	7202	ISUZU	46.47	2.58
37	8053	SMITOMO	44.27	2.88
38	6503	MELCO	43.26	2.81
39	3382	7&I-HD	41.97	2.20
40	8002	MARBENI	41.29	2.82
41	6326	KUBOTA	39.72	2.85
42	6753	SHARP	37.62	3.11
43	8801	MTI-FU	37.37	3.01
44	8802	MTB-EST	37.35	2.80
45	5401	NPSTEEL	35.99	2.70
46	4452	KAO	34.93	2.78
47	5020	JX	34.79	3.26
48	9021	JR WEST	34.42	4.34
49	8309	SMTRUST	33.91	2.89
50	9531	TKO-GAS	32.05	2.85

## Improvement of Monthly Turnover for Top 25 Names ( Sep-2011 )

(Daytime Session)

	RIC	NAME	Sell Executions							Improve Avg. BPS	Buy Executions							Improve Avg. BPS
			Worse(A)		Equal(B)		Better(C)		(B) + (C)		Worse(A)		Equal(B)		Better(C)		(B) + (C)	
1	8411.T	MIZUHO	30	0.18%	756	4.46%	16,175	95.37%	99.82%	34.25	25	0.07%	2,661	7.38%	33,359	92.55%	99.93%	29.18
2	4502.T	TAKEDAP	32	0.74%	511	11.77%	3,799	87.49%	99.26%	4.76	27	0.57%	672	14.23%	4,023	85.20%	99.43%	4.08
3	7751.T	CANON	56	1.58%	505	14.21%	2,994	84.22%	98.42%	5.74	41	0.80%	658	12.89%	4,407	86.31%	99.20%	4.97
4	8306.T	MUFG	33	0.32%	2,882	28.01%	7,375	71.67%	99.68%	11.17	27	0.33%	923	11.38%	7,162	88.29%	99.67%	10.24
5	9433.T	KDDI	54	2.29%	299	12.68%	2,005	85.03%	97.71%	6.09	66	2.25%	359	12.24%	2,507	85.50%	97.75%	5.26
6	6954.T	FANUC	151	5.35%	795	28.19%	1,874	66.45%	94.65%	5.38	197	6.69%	1,024	34.76%	1,725	58.55%	93.31%	4.09
7	9432.T	NTT	38	1.15%	435	13.13%	2,841	85.73%	98.85%	4.90	32	0.88%	598	16.35%	3,027	82.77%	99.12%	5.07
8	7203.T	TOYOTA	257	4.73%	1,968	36.22%	3,208	59.05%	95.27%	2.51	324	5.98%	2,093	38.65%	2,998	55.36%	94.02%	2.36
9	7201.T	NISSAN	90	1.42%	990	15.66%	5,243	82.92%	98.58%	7.11	101	1.34%	1,438	19.09%	5,994	79.57%	98.66%	5.70
10	2914.T	JT	63	3.49%	330	18.27%	1,413	78.24%	96.51%	5.28	70	2.39%	320	10.93%	2,539	86.68%	97.61%	4.41
11	7267.T	HONDA	435	8.69%	1,618	32.31%	2,954	59.00%	91.31%	3.54	390	8.81%	1,623	36.64%	2,416	54.55%	91.19%	2.95
12	8316.T	SMFG	142	3.10%	1,581	34.56%	2,851	62.33%	96.90%	2.80	198	4.60%	1,677	38.99%	2,426	56.41%	95.40%	2.54
13	8604.T	NOMRAHD	24	0.27%	965	10.92%	7,848	88.81%	99.73%	11.98	52	0.45%	1,334	11.50%	10,210	88.05%	99.55%	11.19
14	4523.T	EISAI	19	0.84%	276	12.17%	1,972	86.99%	99.16%	6.12	24	0.76%	253	8.00%	2,885	91.24%	99.24%	4.39
15	6301.T	KOMATSU	267	5.32%	1,673	33.35%	3,076	61.32%	94.68%	3.84	502	9.06%	2,085	37.63%	2,954	53.31%	90.94%	3.24
16	6502.T	TOSHIBA	44	1.71%	342	13.31%	2,183	84.97%	98.29%	11.41	30	1.03%	472	16.24%	2,404	82.73%	98.97%	10.47
17	8031.T	mitsui	128	2.67%	2,131	44.38%	2,543	52.96%	97.33%	4.07	119	2.17%	2,247	41.05%	3,108	56.78%	97.83%	4.35
18	8058.T	MITBISI	138	2.92%	2,006	42.49%	2,577	54.59%	97.08%	3.83	212	4.18%	2,496	49.24%	2,361	46.58%	95.82%	3.02
19	6501.T	HITACHI	28	1.21%	231	9.97%	2,058	88.82%	98.79%	9.27	29	1.12%	272	10.54%	2,279	88.33%	98.88%	9.14
20	6971.T	KYOCERA	37	1.98%	202	10.78%	1,634	87.24%	98.02%	5.35	28	1.53%	241	13.20%	1,557	85.27%	98.47%	5.01
21	9437.T	DOCOMO	127	3.46%	1,485	40.47%	2,057	56.06%	96.54%	3.20	120	3.99%	1,162	38.63%	1,726	57.38%	96.01%	3.69
22	6758.T	SONY	114	2.62%	1,608	36.96%	2,629	60.42%	97.38%	3.87	222	4.43%	2,158	43.03%	2,635	52.54%	95.57%	3.14
23	9984.T	SOFTBNK	293	6.48%	1,594	35.23%	2,637	58.29%	93.52%	3.20	560	11.79%	1,728	36.39%	2,460	51.81%	88.21%	2.78
24	8591.T	ORIX	67	1.36%	1,188	24.19%	3,657	74.45%	98.64%	8.38	137	2.10%	1,623	24.91%	4,755	72.99%	97.90%	6.76
25	8001.T	ITOCHU	99	2.07%	969	20.27%	3,712	77.66%	97.93%	4.78	46	0.87%	1,062	20.19%	4,152	78.94%	99.13%	4.77

Note1: Excluded the executions from before 9AM, lunch break, and after 3PM

Note2: Avg. Price Improvement are based on Japannext vs. Primary Exchange prices