

Monthly Statistics

Apr-2011

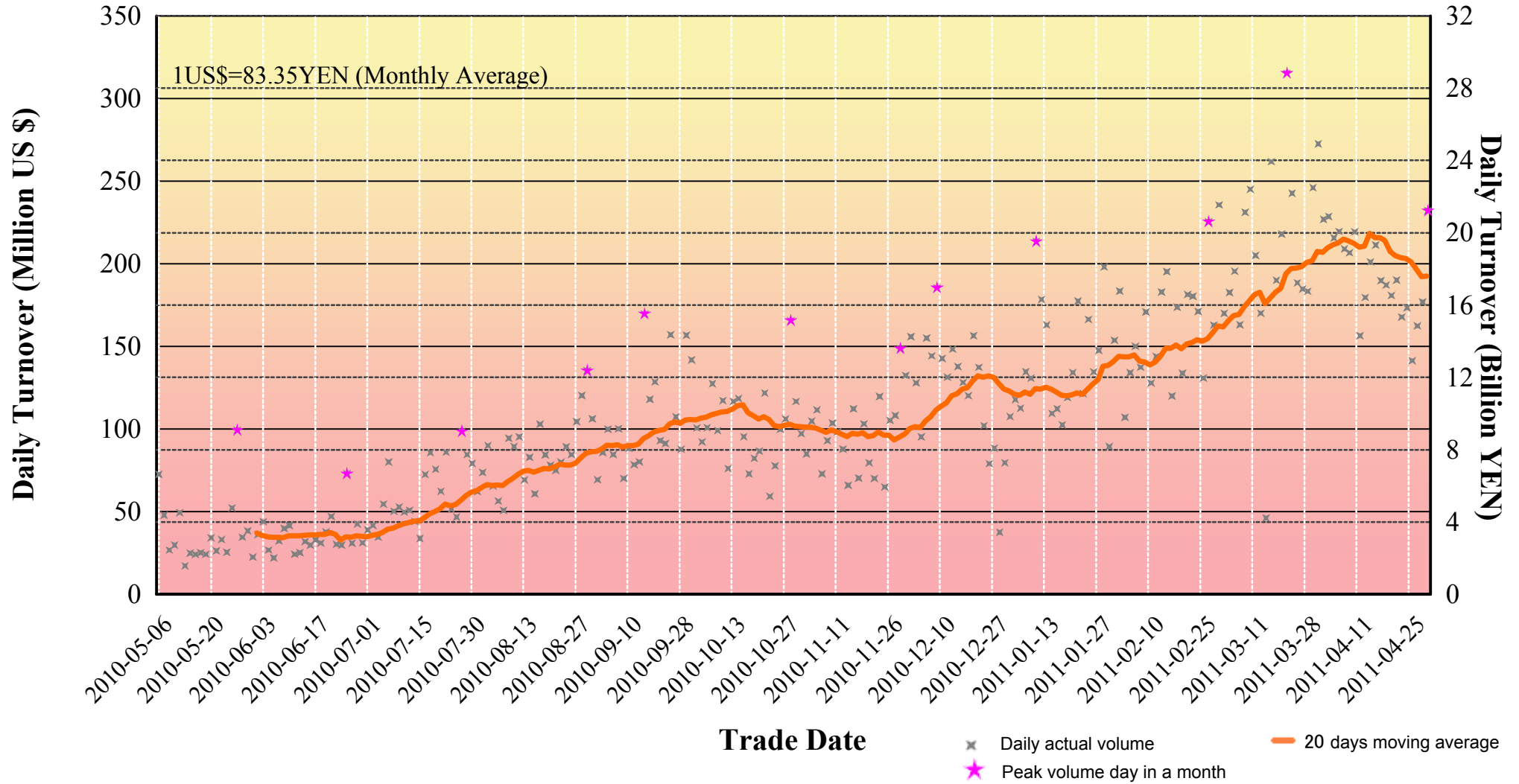
Japannext PTS

SBI Japannext Co., Ltd

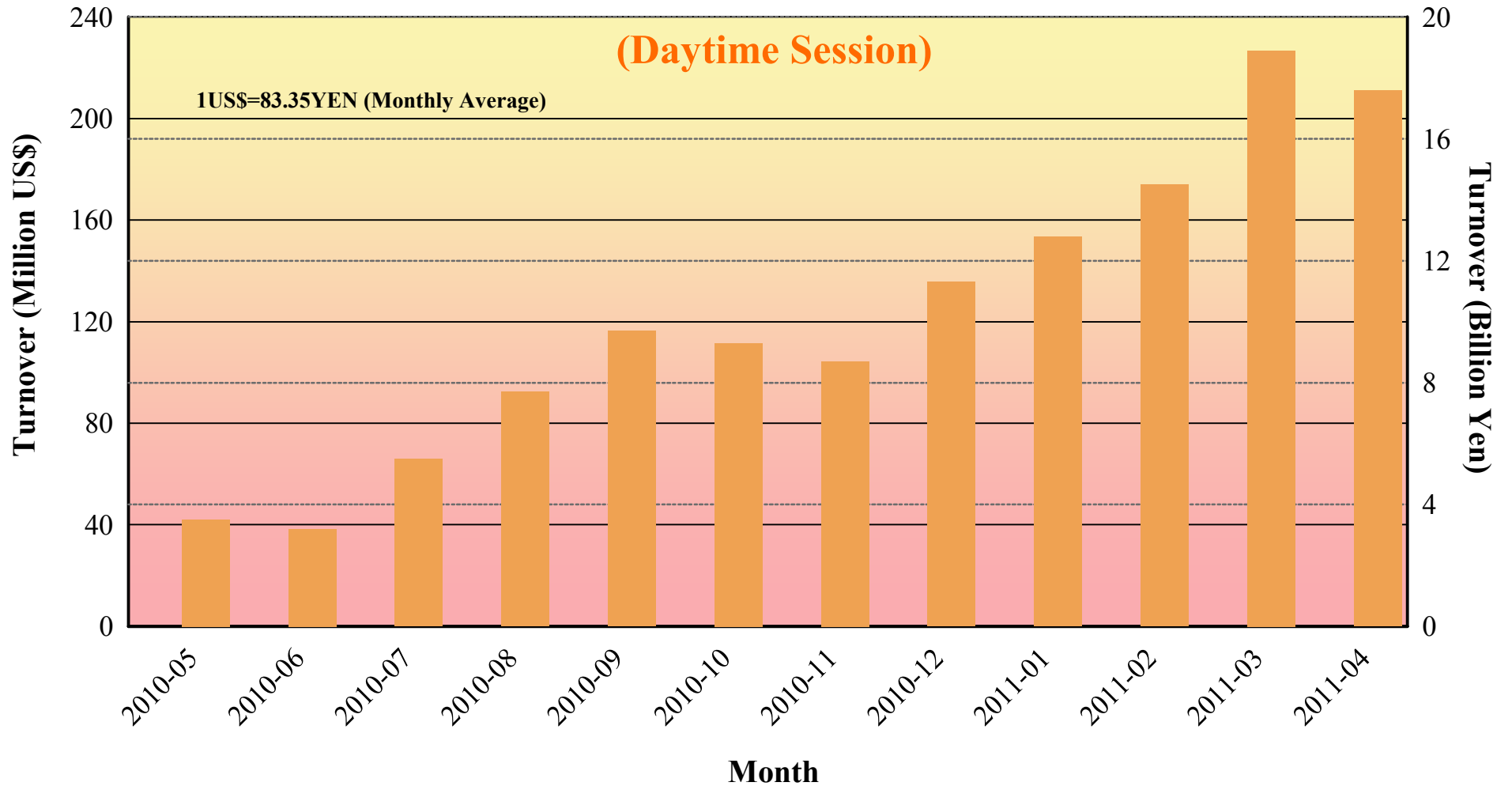
Disclaimer

Information provided is for reference purposes only and does not constitute financial product advice nor is constituted as an offer to sell or solicitation to buy any security. The ownership and intellectual property rights of this information are solely and exclusively belong to SBI Japannext Co.,Ltd.(“SBIJ”). According users are permitted to access and use the Information for their own personal, non-commercial and internal-use-only. Although SBIJ has made every effort to ensure the accuracy of the information as at the date of publication, SBIJ does not give any warranty as to the accuracy, reliability or completeness of the information. To the extent permitted by law, SBIJ and its employees, officers and contractors shall not be liable for any loss or damage arising in any way (including by way of negligence) from or in connection with any information provided or omitted or from anyone acting or refraining to act in reliance on this information.

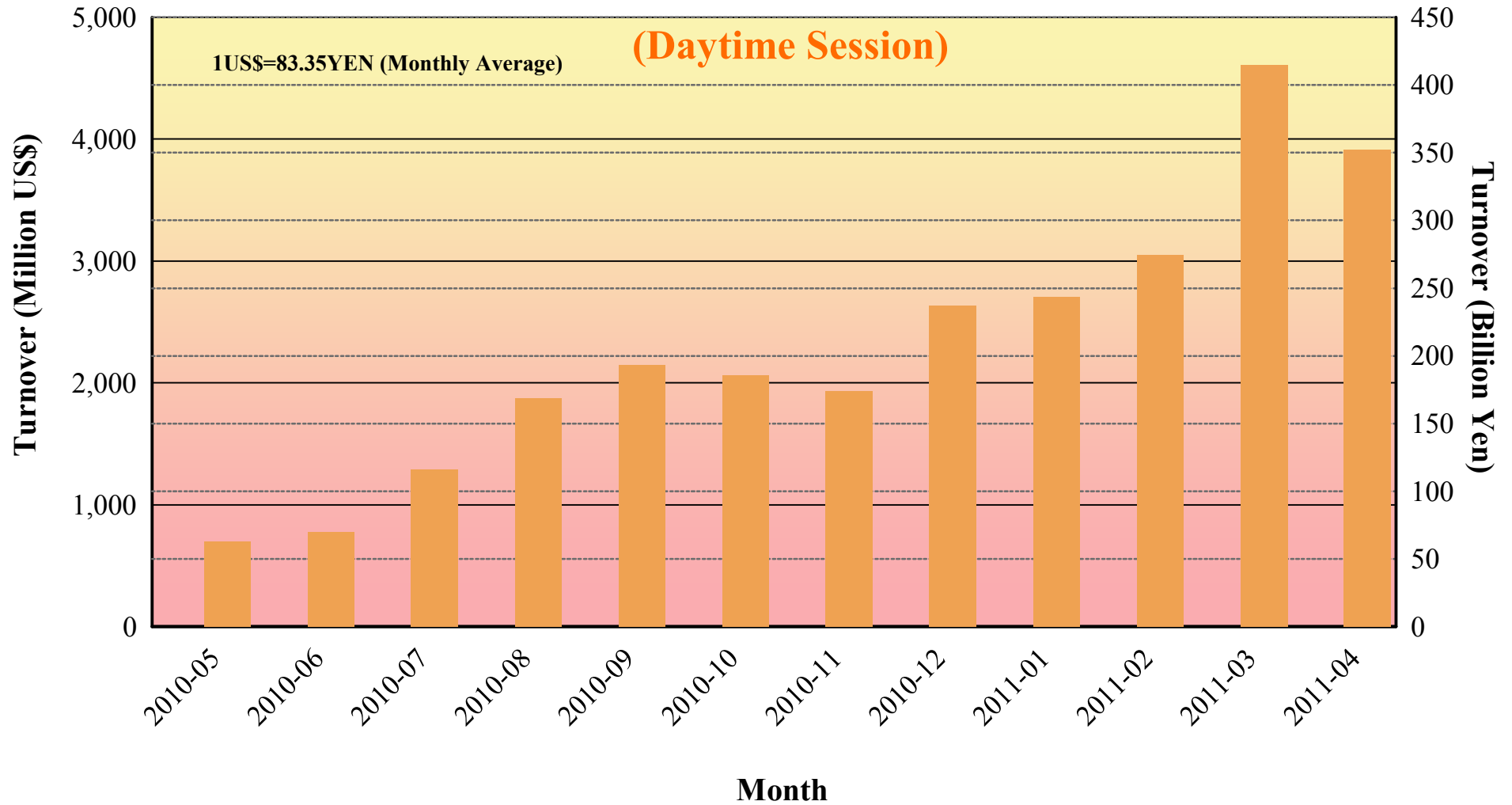
Daily Turnover of Daytime Session



Average Daily Turnover by Month

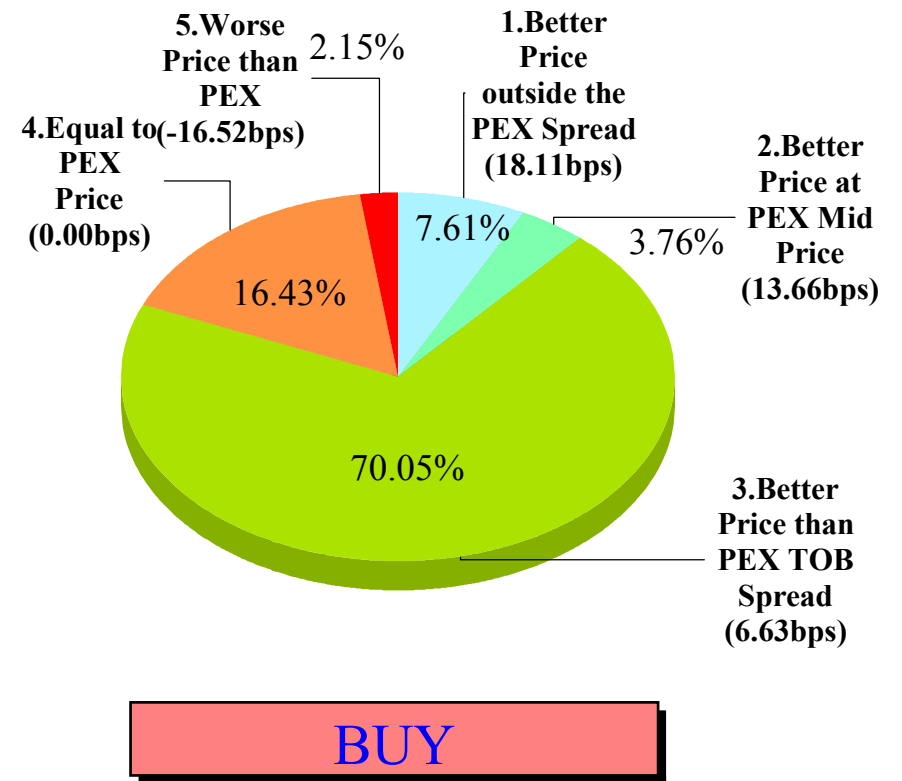
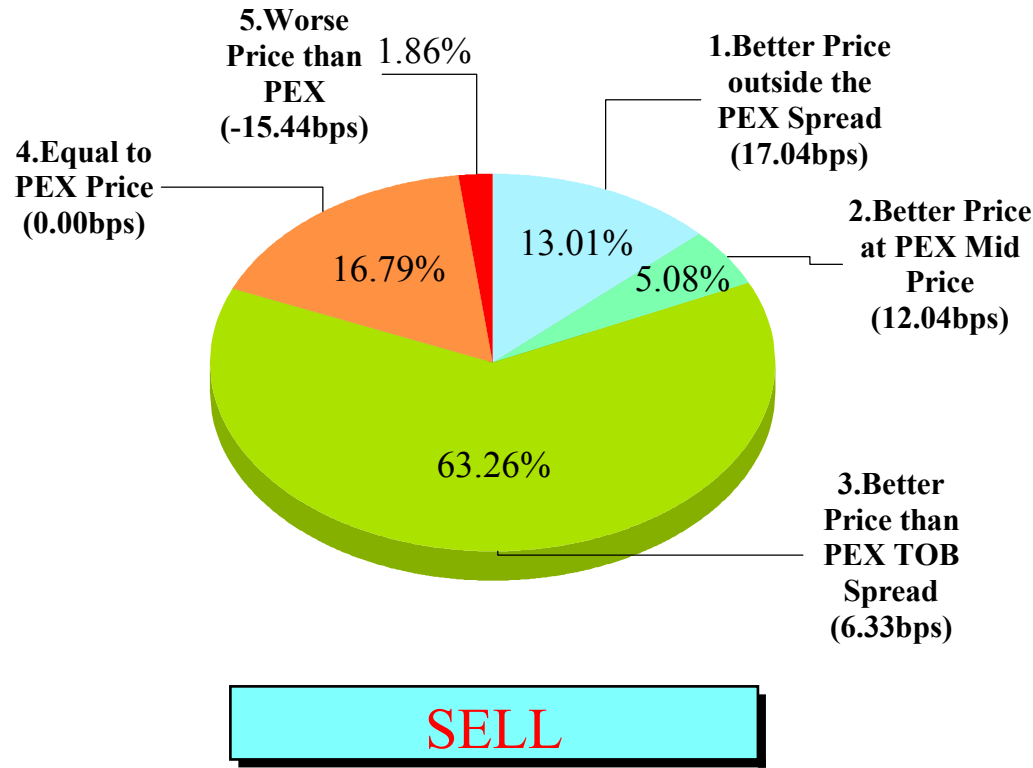


Total Turnover by Month



"Daytime Session" Execution

Nikkei 225 (Apr-2011)

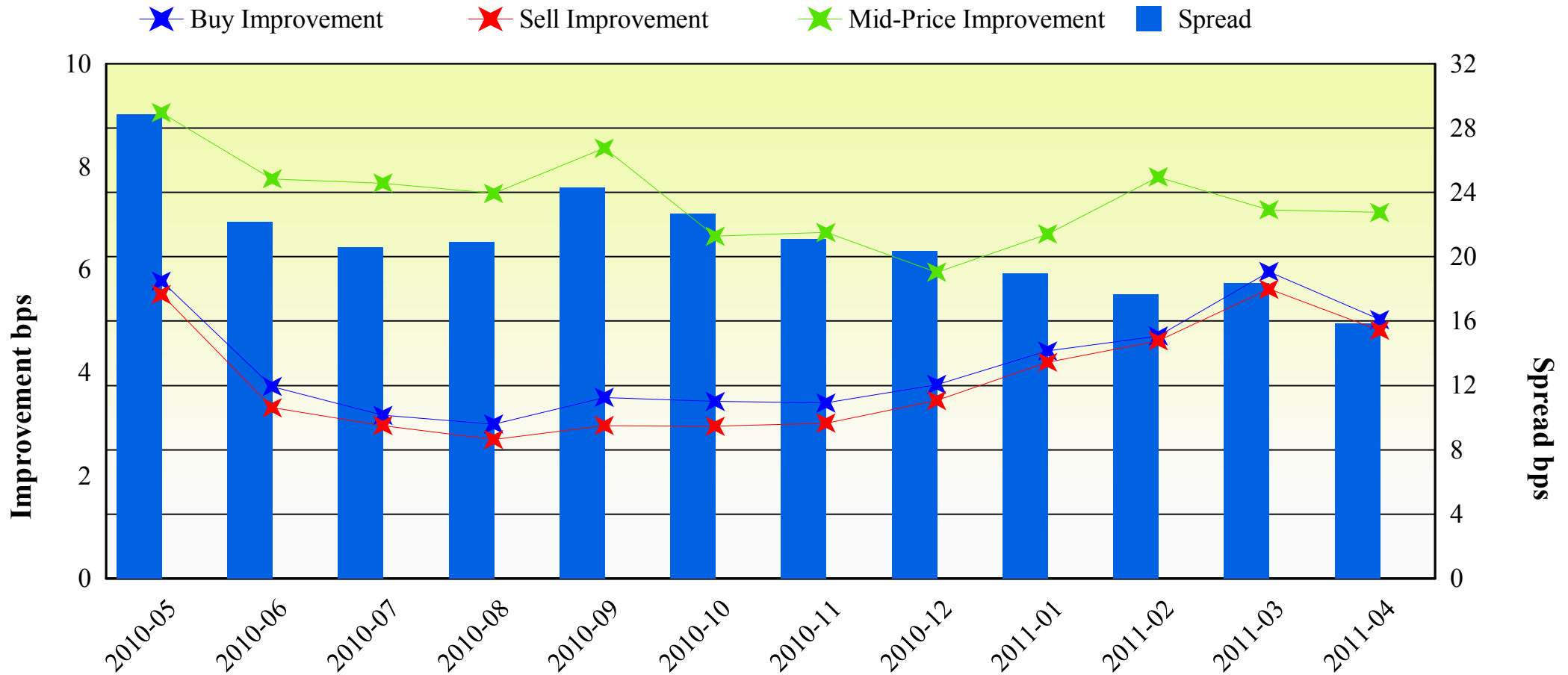


Note1: Excluded the executions from before 9AM, lunch break, and after 3PM

Note2: Avg. Price Improvement are based on Japannext vs. Primary Exchange prices

Improvement of Order (bps)

Nikkei 225 (Apr-2011)

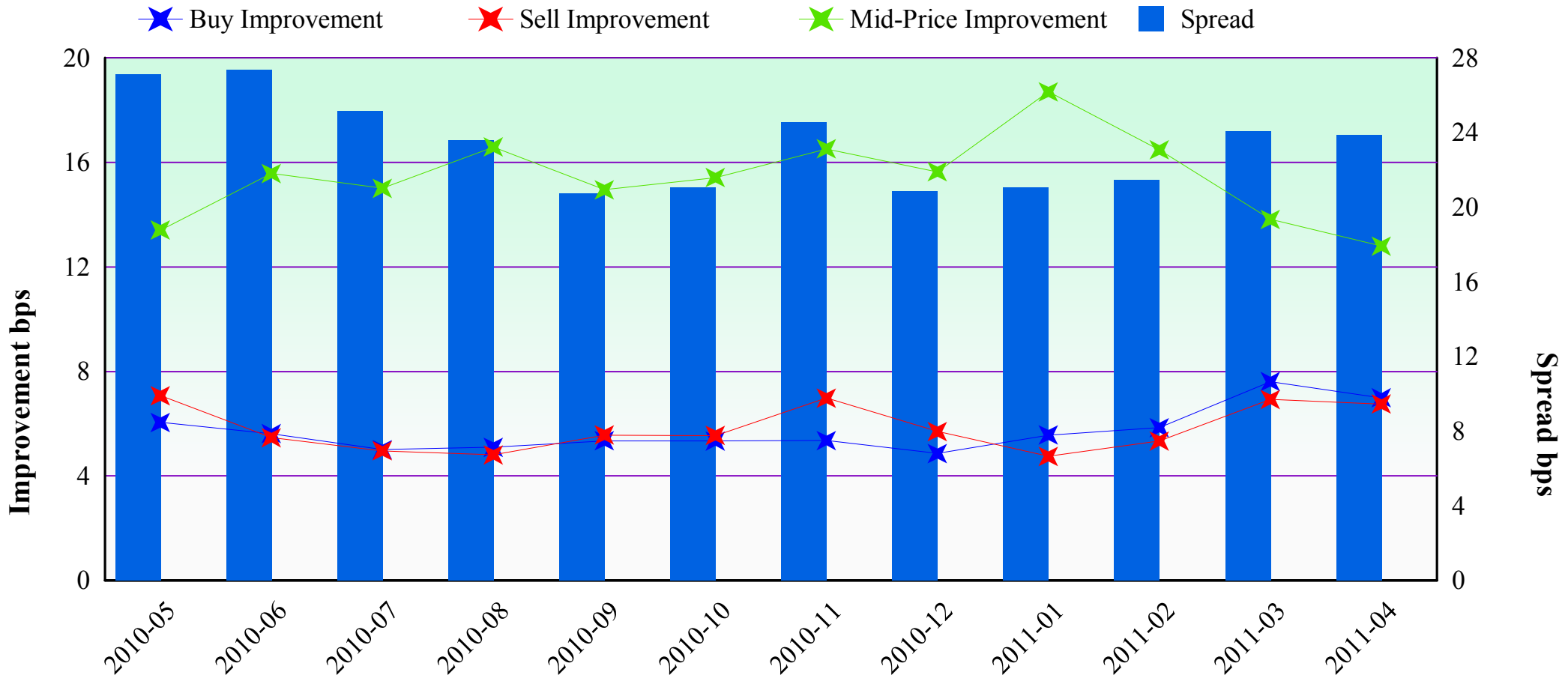


Note1: Excluded the executions from before 9AM, lunch break, and after 3PM

Note2: Avg. Price Improvements are based on Japannext vs. Primary Exchange prices

Improvement of Execution (bps)

Nikkei 225 (Apr-2011)



Note1: Excluded the executions from before 9AM, lunch break, and after 3PM

Note2: Avg. Price Improvements are based on Japannext vs. Primary Exchange prices

Monthly Turnover Top 50 Names in Daytime session (Apr-2011)

1US\$=83.35YEN (Monthly Average)

	SYMBOL	DESCRIPTION	Turnover (Million US\$)	Market-share (%)
1	8411	MIZUHO	172.39	4.28
2	8306	MUFG	119.32	2.00
3	7203	TOYOTA	99.31	1.40
4	7751	CANON	83.51	1.80
5	4502	TAKEDAP	79.93	2.90
6	9984	SOFTBNK	77.32	1.26
7	7267	HONDA	73.32	1.23
8	6501	HITACHI	53.23	1.36
9	7201	NISSAN	52.53	1.38
10	6954	FANUC	46.63	1.14
11	8604	NOMRAHD	42.54	2.16
12	6502	TOSHIBA	41.39	1.05
13	9432	NTT	41.00	2.44
14	9433	KDDI	38.65	1.83
15	7011	MHI	35.30	1.32
16	1605	INPEX	34.93	1.58
17	8316	SMFG	33.02	0.55
18	9202	ANA	32.88	4.99
19	6971	KYOCERA	31.79	1.63
20	4503	ASTELLAS	31.12	2.43
21	8031	MITSUI	30.80	1.04
22	8802	MTB-EST	29.81	1.50
23	2914	JT	28.84	1.73
24	7974	NINTEND	28.15	0.75
25	9983	FASTRET	27.01	1.04

	SYMBOL	DESCRIPTION	Turnover (Million US\$)	Market-share (%)
26	4063	SINETUC	26.98	1.48
27	8309	SMTRUST	26.97	2.46
28	8058	MITBISI	26.52	0.85
29	9531	TKO-GAS	25.94	2.11
30	6752	PANASNIC	25.93	1.57
31	5401	NPSTEEL	25.03	2.11
32	4208	UBE IND	24.45	3.04
33	9020	JR EAST	23.37	1.63
34	6762	TDK	23.25	0.84
35	6301	KOMATSU	22.72	0.62
36	8830	SMIRE&D	22.69	1.90
37	9437	DOCOMO	22.11	1.41
38	9101	NYKLINE	21.82	2.41
39	8002	MARBENI	21.73	1.82
40	6503	MELCO	21.43	1.37
41	6861	KEYENCE	21.17	4.47
42	9532	OSK-GAS	20.67	2.70
43	5405	SMI-MTI	20.64	3.12
44	6758	SONY	20.57	0.65
45	1330	IDXF225	20.55	2.16
46	7261	MAZDA	20.36	2.40
47	8801	MTI-FU	19.74	1.40
48	7012	KHI	19.39	1.30
49	8591	ORIX	19.35	1.17
50	8001	ITOCHU	19.23	1.84

Improvement of Monthly Turnover for Top 25 Names (Apr-2011)

(Daytime Session)

	RIC	NAME	Sell Executions							Improve Avg. BPS	Buy Executions							Improve Avg. BPS
			Worse(A)		Equal(B)		Better(C)		(B) + (C)		Worse(A)		Equal(B)		Better(C)		(B) + (C)	
1	8411.T	MIZUHO	23	0.23%	1,869	18.33%	8,302	81.44%	99.77%	28.78	34	0.17%	2,757	13.61%	17,467	86.22%	99.83%	22.02
2	8306.T	MUFG	25	0.54%	1,158	24.89%	3,470	74.58%	99.46%	9.49	29	0.54%	1,256	23.59%	4,039	75.86%	99.46%	8.29
3	7203.T	TOYOTA	40	1.35%	592	19.99%	2,329	78.66%	98.65%	6.67	28	0.90%	552	17.84%	2,515	81.26%	99.10%	5.07
4	7751.T	CANON	15	0.68%	557	25.08%	1,649	74.25%	99.32%	4.90	31	1.04%	662	22.11%	2,301	76.85%	98.96%	4.35
5	4502.T	TAKEDAP	2	0.14%	318	22.78%	1,076	77.08%	99.86%	4.44	9	0.38%	334	13.96%	2,050	85.67%	99.62%	4.43
6	9984.T	SOFTBNK	46	2.74%	281	16.74%	1,352	80.52%	97.26%	6.72	91	2.77%	203	6.18%	2,993	91.06%	97.23%	4.54
7	7267.T	HONDA	170	5.60%	599	19.73%	2,267	74.67%	94.40%	4.41	187	5.52%	532	15.70%	2,670	78.78%	94.48%	4.47
8	6501.T	HITACHI	11	0.68%	302	18.54%	1,316	80.79%	99.32%	7.98	13	0.78%	206	12.34%	1,450	86.88%	99.22%	8.04
9	7201.T	NISSAN	47	1.29%	650	17.87%	2,940	80.84%	98.71%	7.21	49	1.15%	1,172	27.40%	3,056	71.45%	98.85%	5.52
10	6954.T	FANUC	33	3.96%	90	10.80%	710	85.23%	96.04%	3.72	61	4.16%	72	4.91%	1,333	90.93%	95.84%	3.03
11	8604.T	NOMRAHD	24	0.58%	343	8.26%	3,785	91.16%	99.42%	7.92	26	0.59%	446	10.11%	3,938	89.30%	99.41%	6.76
12	6502.T	TOSHIBA	21	1.26%	321	19.29%	1,322	79.45%	98.74%	10.00	29	1.89%	248	16.18%	1,256	81.93%	98.11%	8.50
13	9432.T	NTT	22	1.20%	186	10.13%	1,628	88.67%	98.80%	4.53	16	0.77%	215	10.35%	1,846	88.88%	99.23%	4.73
14	9433.T	KDDI	15	1.61%	18	1.93%	899	96.46%	98.39%	4.92	17	1.03%	12	0.73%	1,622	98.24%	98.97%	4.47
15	7011.T	MHI	32	2.83%	196	17.35%	902	79.82%	97.17%	9.60	18	1.22%	314	21.36%	1,138	77.41%	98.78%	10.04
16	1605.T	INPEX	17	1.43%	20	1.69%	1,149	96.88%	98.57%	4.42	40	3.22%	22	1.77%	1,181	95.01%	96.78%	4.12
17	8316.T	SMFG	108	3.00%	869	24.13%	2,625	72.88%	97.00%	4.09	49	5.60%	424	48.46%	402	45.94%	94.40%	3.67
18	9202.T	ANA	0	0.00%	30	4.75%	602	95.25%	100.00%	12.09	6	0.50%	28	2.35%	1,155	97.14%	99.50%	11.86
19	6971.T	KYOCERA	13	1.48%	125	14.25%	739	84.26%	98.52%	4.63	11	1.03%	96	8.95%	966	90.03%	98.97%	4.08
20	4503.T	ASTELLAS	4	0.30%	169	12.84%	1,143	86.85%	99.70%	6.53	8	0.57%	123	8.76%	1,273	90.67%	99.43%	4.75
21	8031.T	MITSUI	69	2.66%	450	17.34%	2,076	80.00%	97.34%	3.17	57	2.07%	489	17.77%	2,206	80.16%	97.93%	3.24
22	8802.T	MTB-EST	17	1.63%	63	6.05%	961	92.32%	98.37%	4.08	58	7.65%	43	5.67%	657	86.68%	92.35%	3.43
23	2914.T	JT	19	1.39%	34	2.48%	1,316	96.13%	98.61%	4.28	19	1.19%	96	6.02%	1,479	92.79%	98.81%	3.80
24	7974.OS	NINTEND	34	6.32%	109	20.26%	395	73.42%	93.68%	3.53	57	9.52%	126	21.04%	416	69.45%	90.48%	2.83
25	9983.T	FASTRET	29	5.73%	38	7.51%	439	86.76%	94.27%	4.67	33	2.62%	126	10.01%	1,100	87.37%	97.38%	3.81

Note1: Excluded the executions from before 9AM, lunch break, and after 3PM

Note2: Avg. Price Improvement are based on Japannext vs. Primary Exchange prices