

Monthly Statistics

Jan-2011

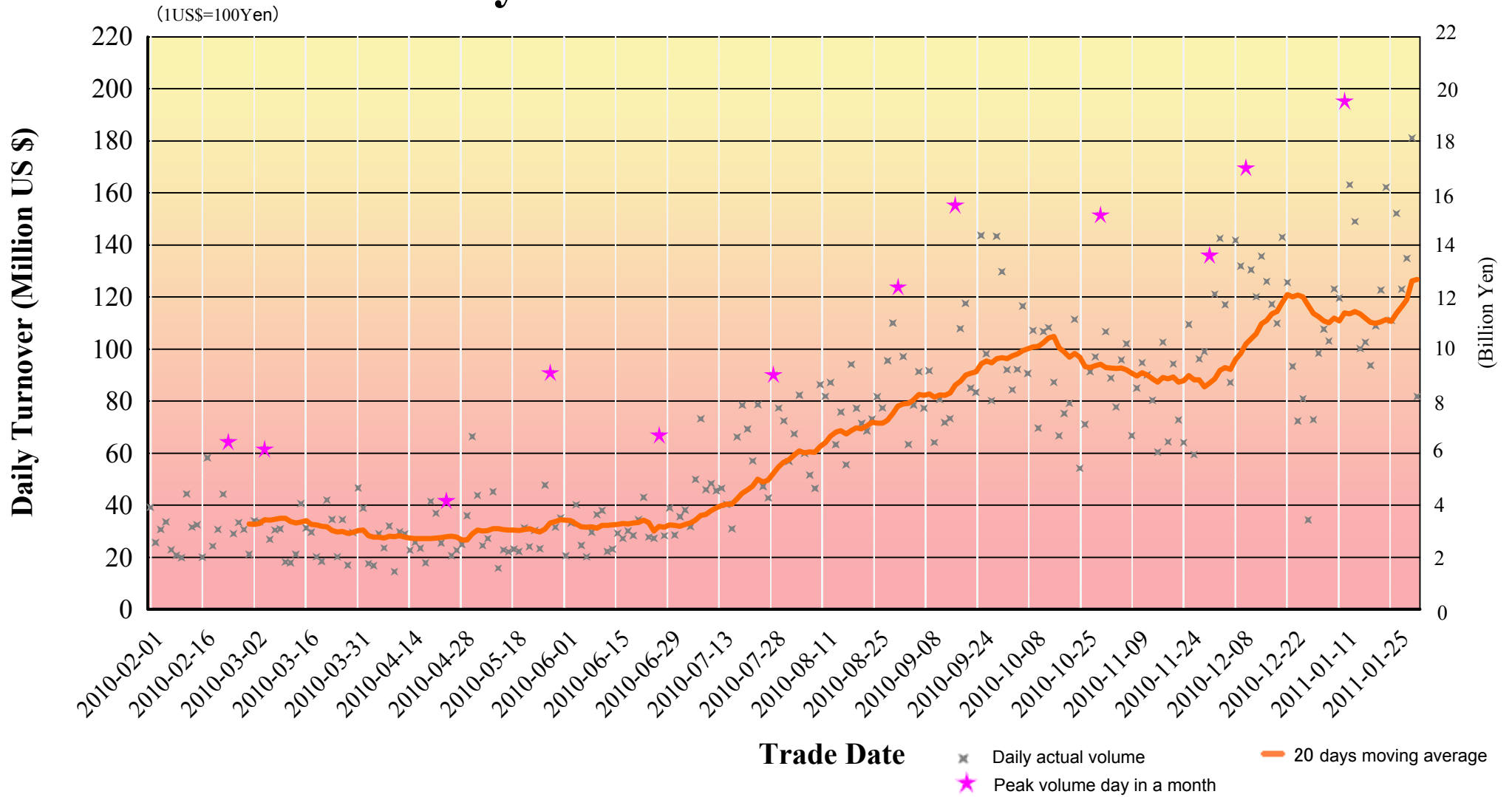
Japannext PTS

SBI Japannext Co., Ltd

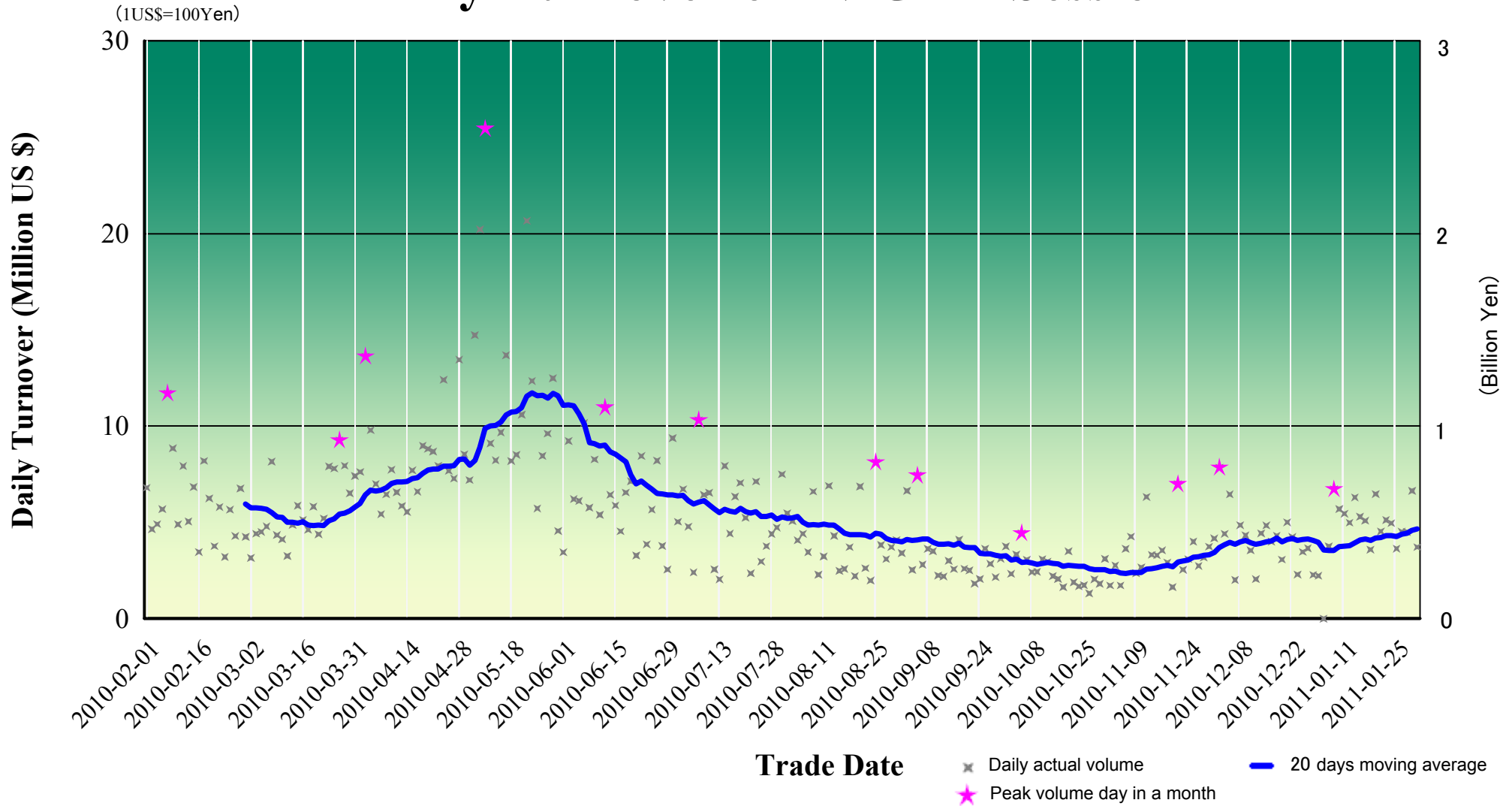
Disclaimer

Information provided is for reference purposes and does not constitute financial product advice nor is construed as an offer to sell or the solicitation of an offer to buy any security. The ownership and the intellectual property rights of this information solely and exclusively belong to SBI Japannext Co.,Ltd. (“SBIJ”). Accordingly users are permitted to get an access and use of the Information for their own personal, non-commercial and internal-use-only. Although SBIJ has made every effort to ensure the accuracy of the information as at the date of publication, SBIJ does not give any warranty or representation as to the accuracy, reliability or completeness of the information. To the extent permitted by law, SBIJ and its employees, officers and contractors shall not be liable for any loss or damage arising in any way (including by way of negligence) from or in connection with any information provided or omitted or from any one acting or refraining to act in reliance on this information.

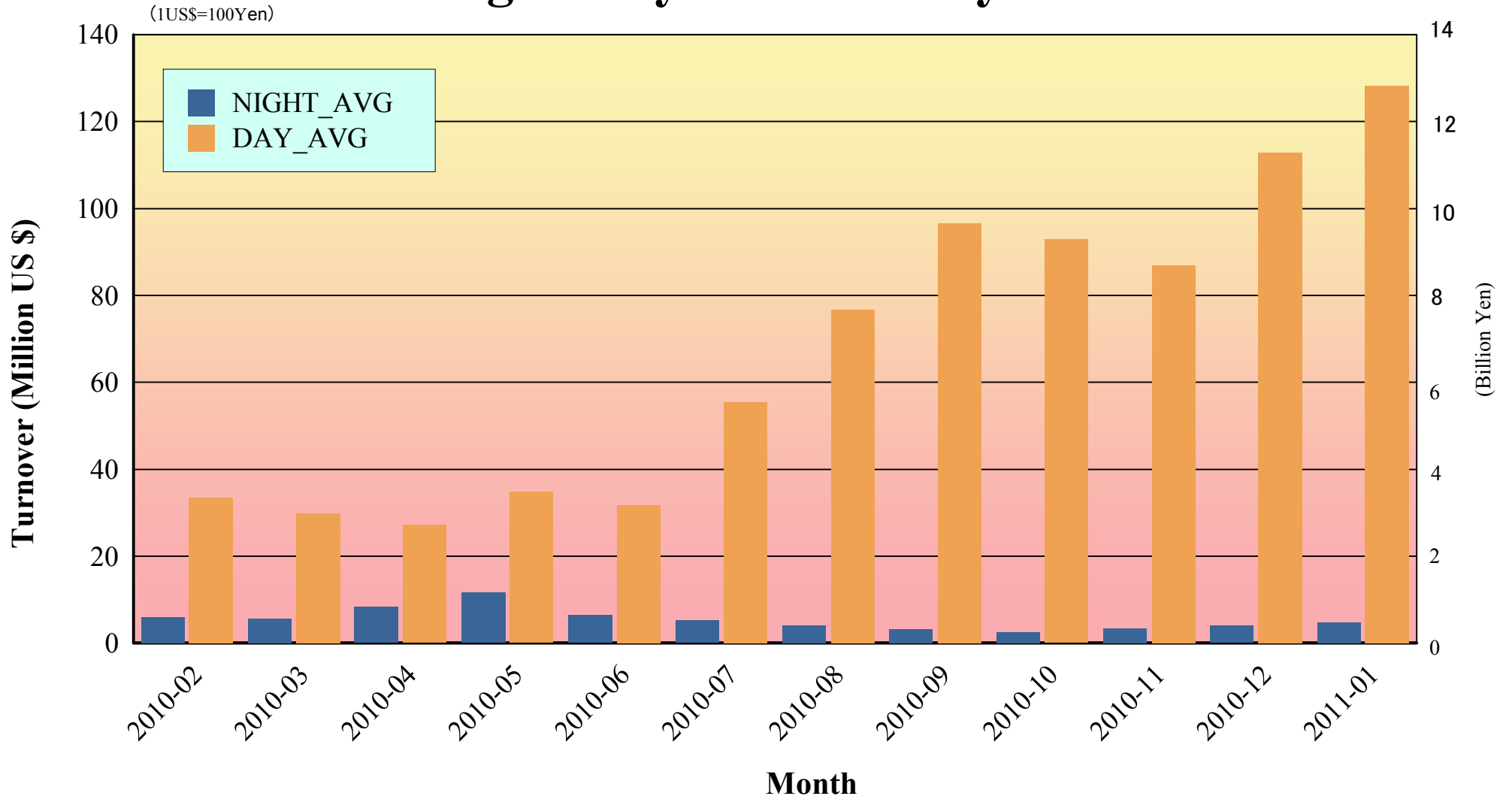
Daily Turnover on DAY Session



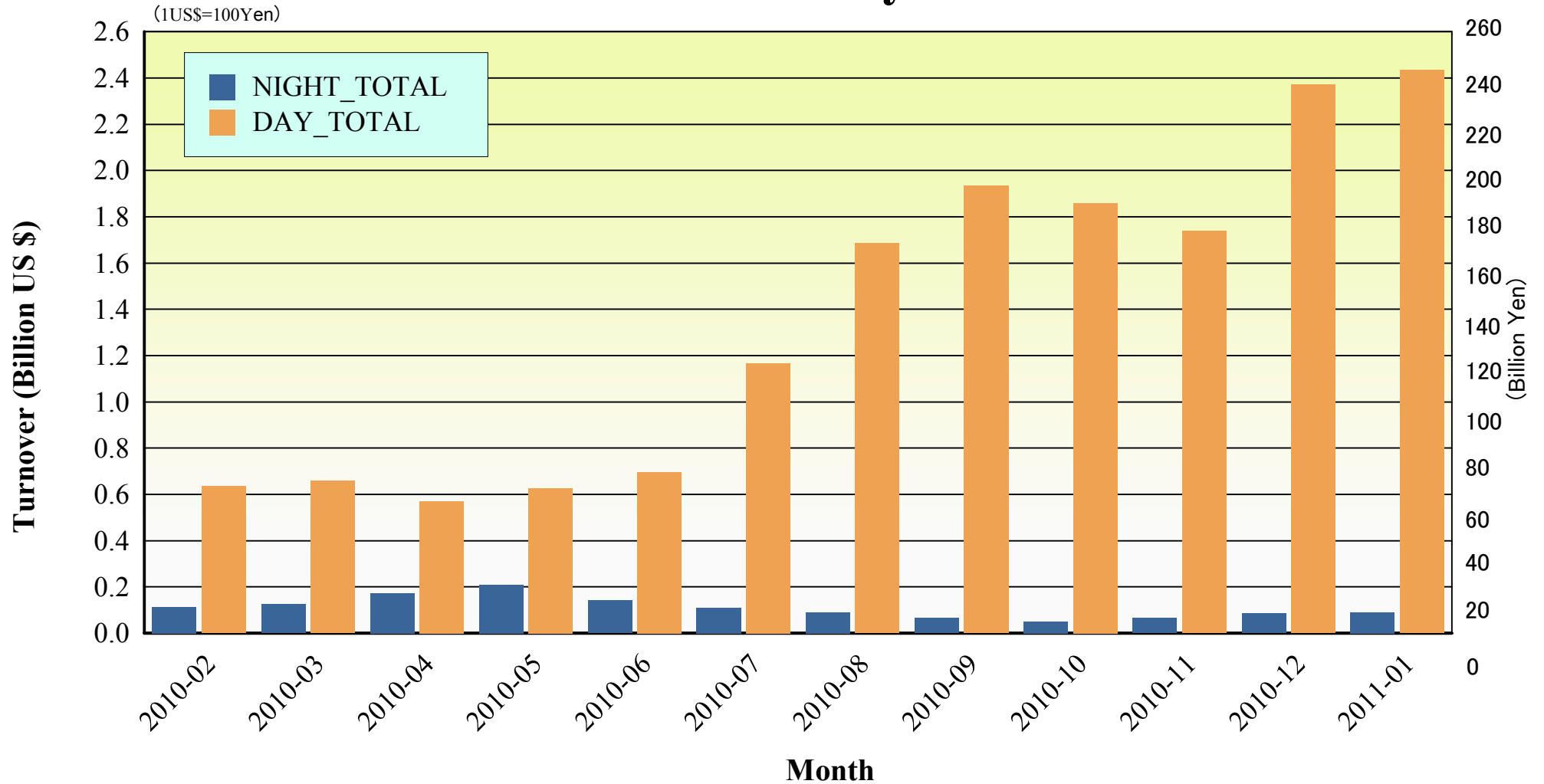
Daily Turnover on NIGHT Session



Average Daily Turnover by Month

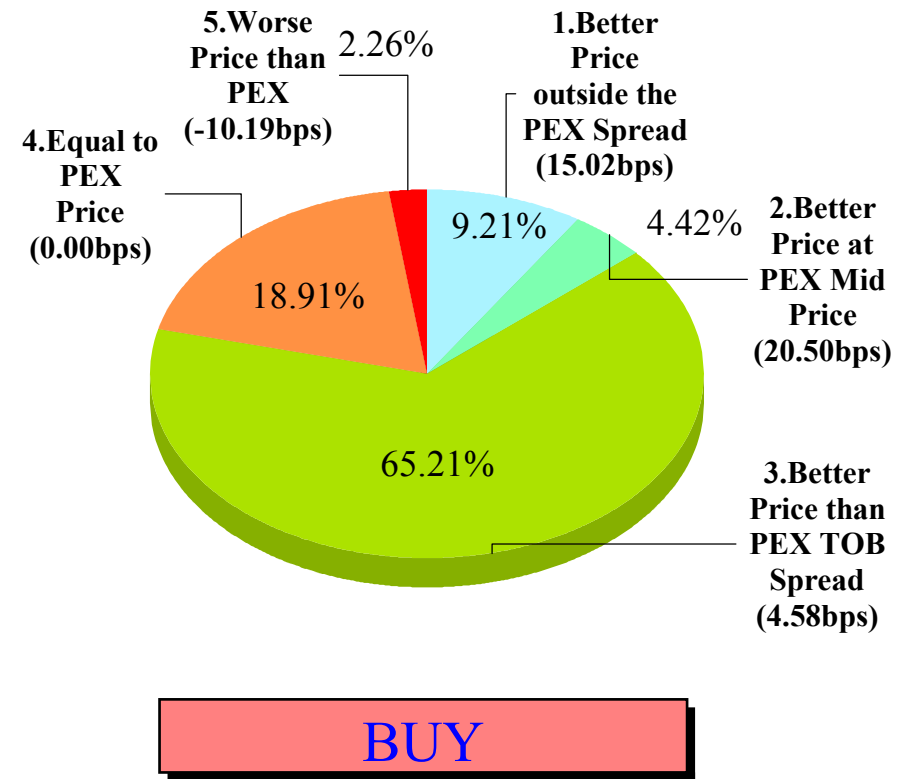
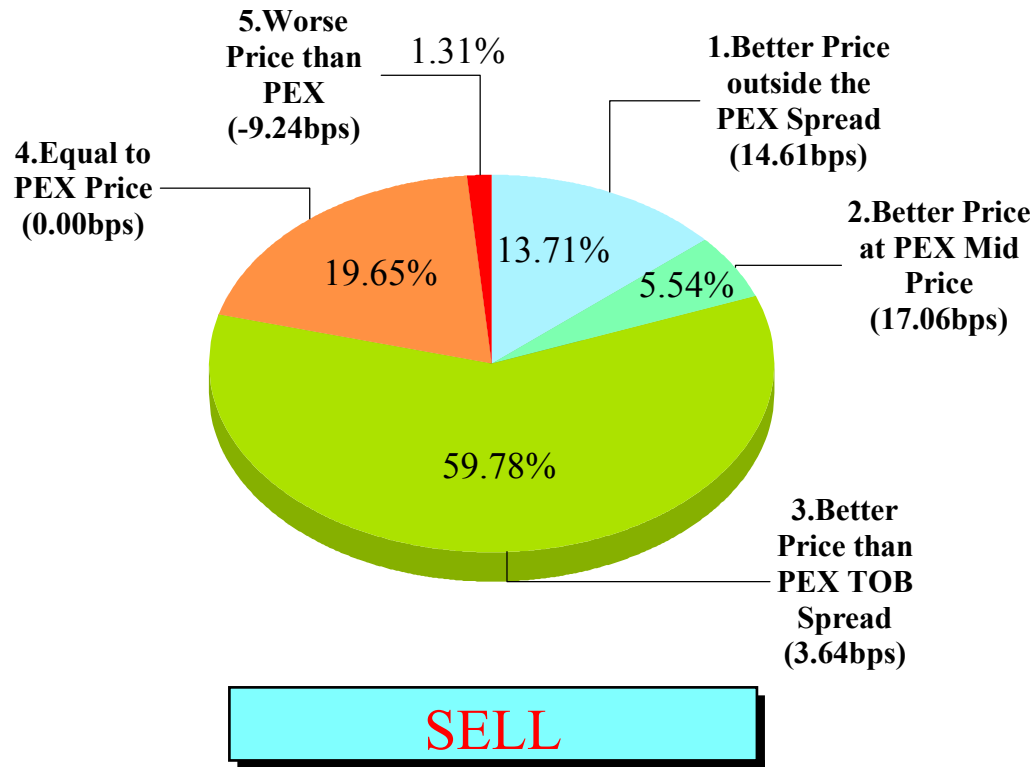


Total Turnover by Month



"Daytime Session" Execution

Nikkei 225 (Jan-2011)

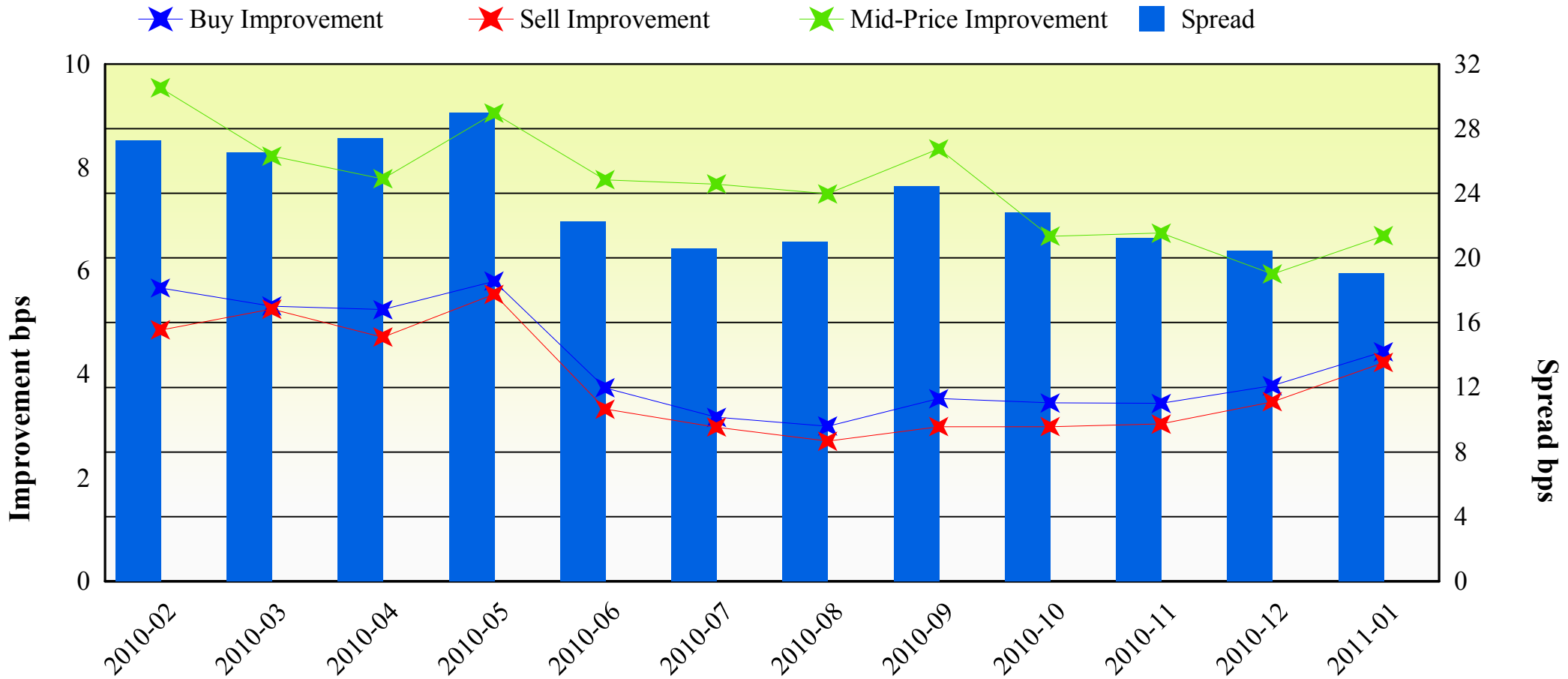


Note1: Excluded the executions from before 9AM, lunch break, and after 3PM

Note2: Avg. Price Improvement are based on Japannext vs. Primary Exchange prices

Improvement of Order (bps)

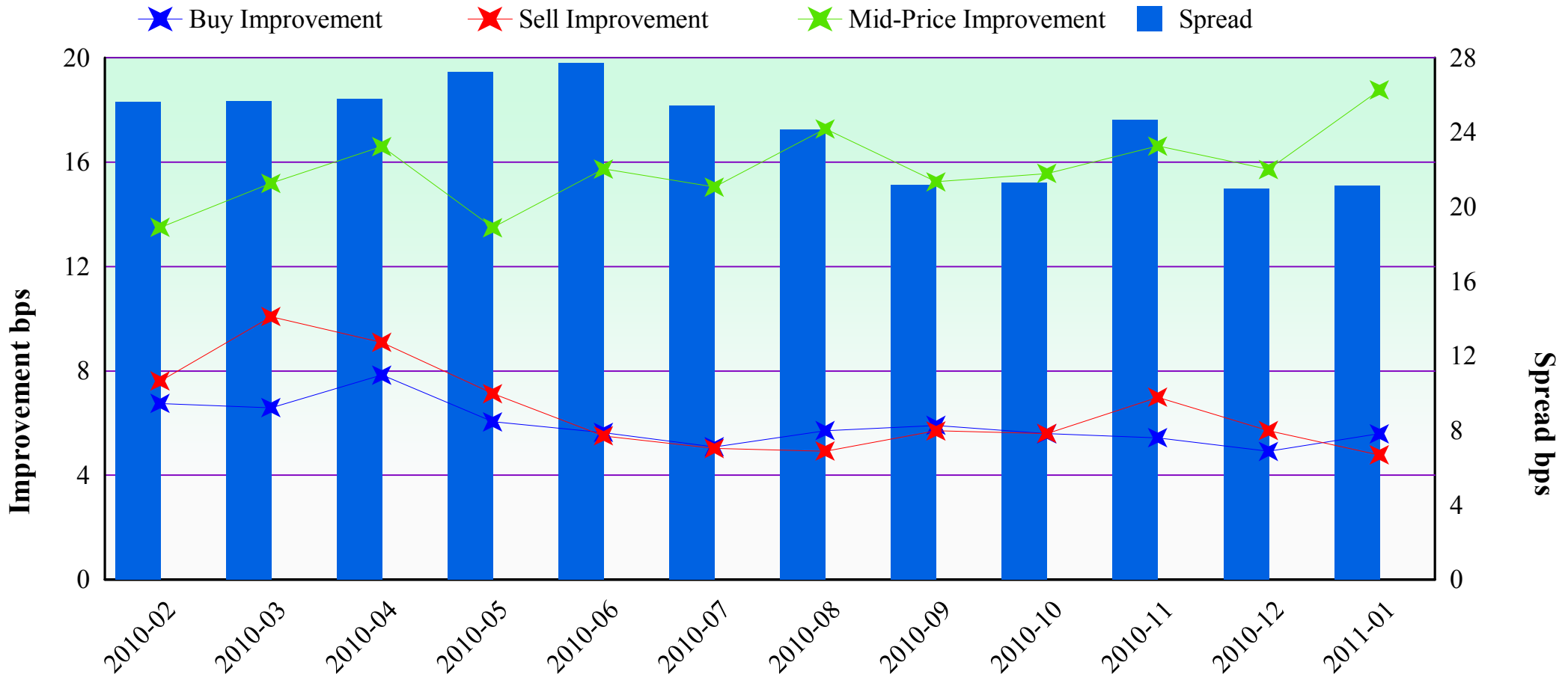
Nikkei 225 (Jan-2011)



Note1: Excluded the executions from before 9AM, lunch break, and after 3PM
 Note2: Avg. Price Improvements are based on Japannext vs. Primary Exchange prices

Improvement of Execution (bps)

Nikkei 225 (Jan-2011)



Note1: Excluded the executions from before 9AM, lunch break, and after 3PM

Note2: Avg. Price Improvements are based on Japannext vs. Primary Exchange prices

Day/Night Monthly Turnover for Top 25 Names

(DAY Session)

	SYMBOL	SYMBOL	TURNOVER (Million US\$ 1US\$=100Yen)	Market-share (%)
1	8411	MIZUHO FINANCIAL GROUP, INC.	179.29	3.28
2	7203	TOYOTA MOTOR CORP.	81.96	1.59
3	8306	mitsubishi UFJ FINANCIAL GROUP, INC.	81.44	1.47
4	7267	HONDA MOTOR CO., LTD.	78.87	2.18
5	8604	NOMURA HOLDINGS, INC.	52.97	1.74
6	9432	NIPPON TELEGRAPH & TELEPHONE CORP.	43.00	2.82
7	7751	CANON INC.	39.52	1.11
8	8316	SUMITOMO MITSUI FINANCIAL GROUP, INC.	34.07	0.59
9	4502	TAKEDA PHARMACEUTICAL CO., LTD.	32.34	2.04
10	6502	TOSHIBA CORP.	31.78	0.82
11	7201	NISSAN MOTOR CO., LTD.	30.39	1.22
12	6501	HITACHI, LTD.	30.37	0.79
13	6954	FANUC LTD.	22.51	0.75
14	1605	INPEX CORP.	21.93	1.28
15	9437	NTT DOCOMO, INC.	20.76	1.30
16	8058	MITSUBISHI CORP.	19.95	0.50
17	8591	ORIX CORP.	19.77	0.97
18	9433	KDDI CORP.	18.68	1.25
19	5401	NIPPON STEEL CORP.	17.78	1.10
20	2914	JAPAN TOBACCO INC.	17.69	1.66
21	8002	MARUBENI CORP.	17.17	1.10
22	6971	KYOCERA CORP.	16.87	1.12
23	8001	ITOCHU CORP.	15.80	0.98
24	4063	SHIN-ETSU CHEMICAL CO., LTD.	15.52	0.84
25	6702	FUJITSU LTD.	15.45	1.22

(Jan-2011)

(NIGHT Session)

highlight : "Common" names for Day & NightTime

	SYMBOL	DESCRIPTION	TURNOVER (Million US\$ 1US\$=100Yen)
1	8411	MIZUHO FINANCIAL GROUP, INC.	7.93
2	4571	NANOCARRIER CO., LTD.	4.75
3	9424	JAPAN COMMUNICATIONS INC.	3.20
4	3236	PROPERST CO., LTD.	3.10
5	8306	MITSUBISHI UFJ FINANCIAL GROUP, INC.	2.78
6	8316	SUMITOMO MITSUI FINANCIAL GROUP, INC.	2.67
7	8308	RESONA HOLDINGS, INC.	2.00
8	6501	HITACHI, LTD.	1.56
9	8058	MITSUBISHI CORP.	1.53
10	4028	ISHIHARA SANGYO KAISHA, LTD.	1.51
11	7203	TOYOTA MOTOR CORP.	1.39
12	7974	NINTENDO CO., LTD.	1.35
13	6632	JVC KENWOOD HOLDINGS, INC.	1.15
14	3632	GREE, INC.	1.07
15	6758	SONY CORP.	1.04
16	4573	R-TECH UENO, LTD.	0.98
17	3859	SYNERGY MARKETING, INC.	0.93
18	6301	KOMATSU LTD.	0.92
19	1801	TAISEI CORP.	0.90
20	7776	CELLSEED INC.	0.90
21	6502	TOSHIBA CORP.	0.87
22	4751	CYBERAGENT, INC.	0.86
23	3843	FREEBIT CO., LTD.	0.84
24	8031	mitsui & CO., LTD.	0.81
25	4523	EISAI CO., LTD.	0.74

Improvement of Monthly Turnover for Top 25 Names (Jan-2011)

(Daytime Session)

	RIC	NAME	Sell Executions							Improve Avg. BPS	Buy Executions							Improve Avg. BPS
			Worse(A)		Equal(B)		Better(C)		(B) + (C)		Worse(A)		Equal(B)		Better(C)		(B) + (C)	
1	8411.T	MIZUHO	19	0.28%	440	6.38%	6,438	93.34%	99.72%	21.68	11	0.10%	346	3.28%	10,199	96.62%	99.90%	25.63
2	7203.T	TOYOTA	13	0.59%	359	16.30%	1,830	83.11%	99.41%	3.33	16	0.80%	313	15.69%	1,666	83.51%	99.20%	3.86
3	8306.T	MUFG	35	1.20%	657	22.45%	2,235	76.36%	98.80%	9.45	37	0.97%	930	24.27%	2,865	74.77%	99.03%	9.27
4	7267.T	HONDA	8	0.34%	436	18.45%	1,919	81.21%	99.66%	3.78	9	0.28%	506	15.80%	2,687	83.92%	99.72%	3.51
5	8604.T	NOMRAHD	16	0.81%	282	14.31%	1,672	84.87%	99.19%	5.66	20	0.53%	405	10.71%	3,357	88.76%	99.47%	4.83
6	9432.T	NTT	4	0.32%	94	7.56%	1,145	92.12%	99.68%	3.59	10	0.77%	108	8.35%	1,175	90.87%	99.23%	2.84
7	7751.T	CANON	3	0.27%	380	34.51%	718	65.21%	99.73%	4.32	43	2.27%	187	9.85%	1,668	87.88%	97.73%	3.24
8	8316.T	SMFG	98	4.74%	549	26.57%	1,419	68.68%	95.26%	3.80	247	17.67%	431	30.83%	720	51.50%	82.33%	4.07
9	4502.T	TAKEDAP	5	0.44%	102	9.05%	1,020	90.51%	99.56%	2.66	29	2.28%	69	5.42%	1,174	92.30%	97.72%	3.21
10	6502.T	TOSHIBA	0	0.00%	103	16.48%	522	83.52%	100.00%	5.13	4	0.47%	117	13.81%	726	85.71%	99.53%	5.60
11	7201.T	NISSAN	14	0.69%	616	30.33%	1,401	68.98%	99.31%	4.64	37	1.44%	510	19.81%	2,028	78.76%	98.56%	4.06
12	6501.T	HITACHI	10	1.61%	127	20.48%	483	77.90%	98.39%	8.81	4	0.50%	111	13.93%	682	85.57%	99.50%	4.56
13	6954.T	FANUC	15	2.54%	139	23.56%	436	73.90%	97.46%	2.61	60	8.98%	186	27.84%	422	63.17%	91.02%	2.89
14	1605.T	INPEX	19	2.49%	48	6.29%	696	91.22%	97.51%	3.72	43	3.13%	25	1.82%	1,304	95.04%	96.87%	2.11
15	9437.T	DOCOMO	15	1.26%	315	26.45%	861	72.29%	98.74%	1.83	40	2.37%	675	39.99%	973	57.64%	97.63%	2.21
16	8058.T	MITBISI	34	2.84%	558	46.66%	604	50.50%	97.16%	3.14	20	1.60%	642	51.40%	587	47.00%	98.40%	3.10
17	8591.T	ORIX	10	0.70%	347	24.40%	1,065	74.89%	99.30%	4.19	12	0.59%	449	22.05%	1,575	77.36%	99.41%	3.52
18	9433.T	KDDI	13	2.57%	50	9.88%	443	87.55%	97.43%	1.78	19	1.87%	4	0.39%	995	97.74%	98.13%	1.21
19	5401.T	NPSTEEL	0	0.00%	74	14.92%	422	85.08%	100.00%	8.03	5	0.78%	133	20.78%	502	78.44%	99.22%	7.84
20	2914.T	JT	10	1.11%	174	19.27%	719	79.62%	98.89%	3.36	20	1.38%	452	31.24%	975	67.38%	98.62%	2.38
21	8002.T	MARBENI	23	4.49%	66	12.89%	423	82.62%	95.51%	5.61	12	2.01%	60	10.05%	525	87.94%	97.99%	2.84
22	6971.T	KYOCERA	0	0.00%	84	23.73%	270	76.27%	100.00%	2.71	20	3.25%	25	4.07%	570	92.68%	96.75%	1.69
23	8001.T	ITOCHU	8	0.70%	193	16.89%	942	82.41%	99.30%	4.13	21	1.97%	181	17.01%	862	81.02%	98.03%	2.80
24	4063.T	SINETUC	3	0.46%	152	23.46%	493	76.08%	99.54%	3.55	20	2.31%	81	9.38%	763	88.31%	97.69%	2.14
25	6702.T	FUJITSU	0	0.00%	58	9.21%	572	90.79%	100.00%	3.56	8	1.35%	78	13.13%	508	85.52%	98.65%	4.80

Note1: Excluded the executions from before 9AM, lunch break, and after 3PM

Note2: Avg. Price Improvement are based on Japannext vs. Primary Exchange prices