

# Monthly Statistics

Jun-2010

*Japannext PTS*

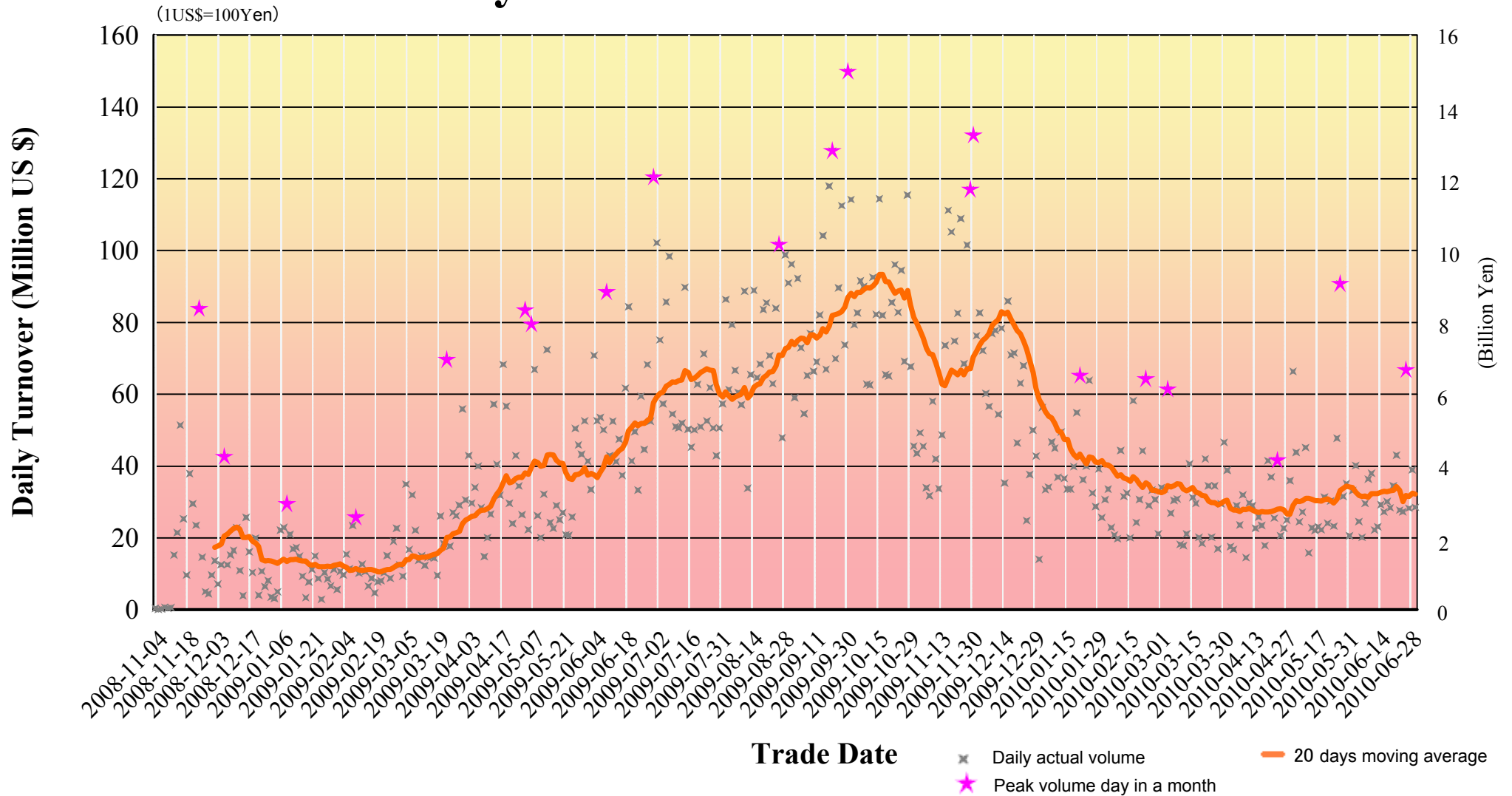
---

*SBI Japannext Co., Ltd*

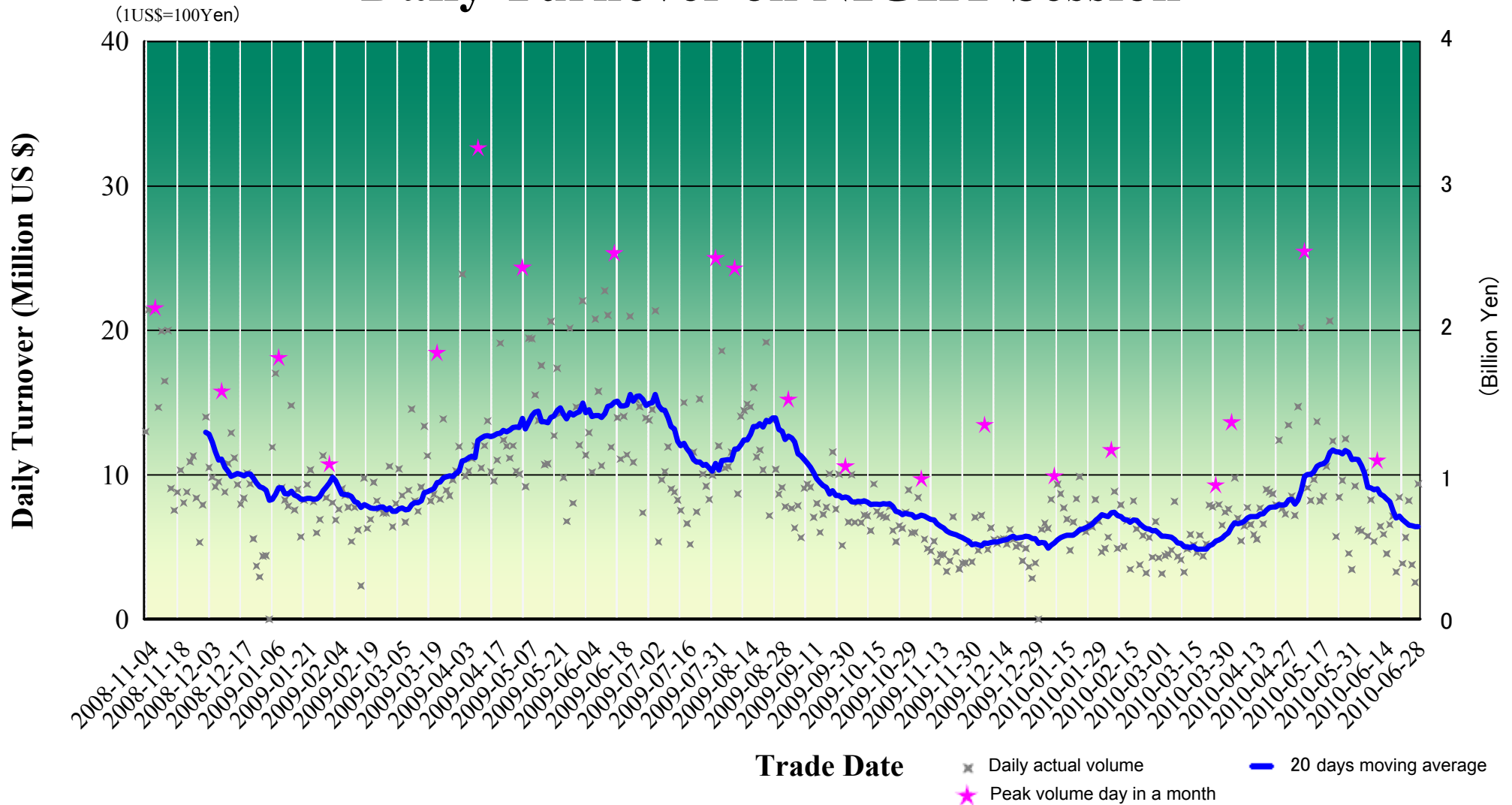
**Disclaimer**

Information provided is for reference purposes and does not constitute financial product advice nor is construed as an offer to sell or the solicitation of an offer to buy any security. The ownership and the intellectual property rights of this information solely and exclusively belong to SBI Japannext Co.,Ltd. (“SBIJ”). Accordingly users are permitted to get an access and use of the Information for their own personal, non-commercial and internal use only. Although SBIJ has made every effort to ensure the accuracy of the information as at the date of publication, SBIJ does not give any warranty or representation as to the accuracy, reliability or completeness of the information. To the extent permitted by law, SBIJ and its employees, officers and contractors shall not be liable for any loss or damage arising in any way (including by way of negligence) from or in connection with any information provided or omitted or from any one acting or refraining to act in reliance on this information.

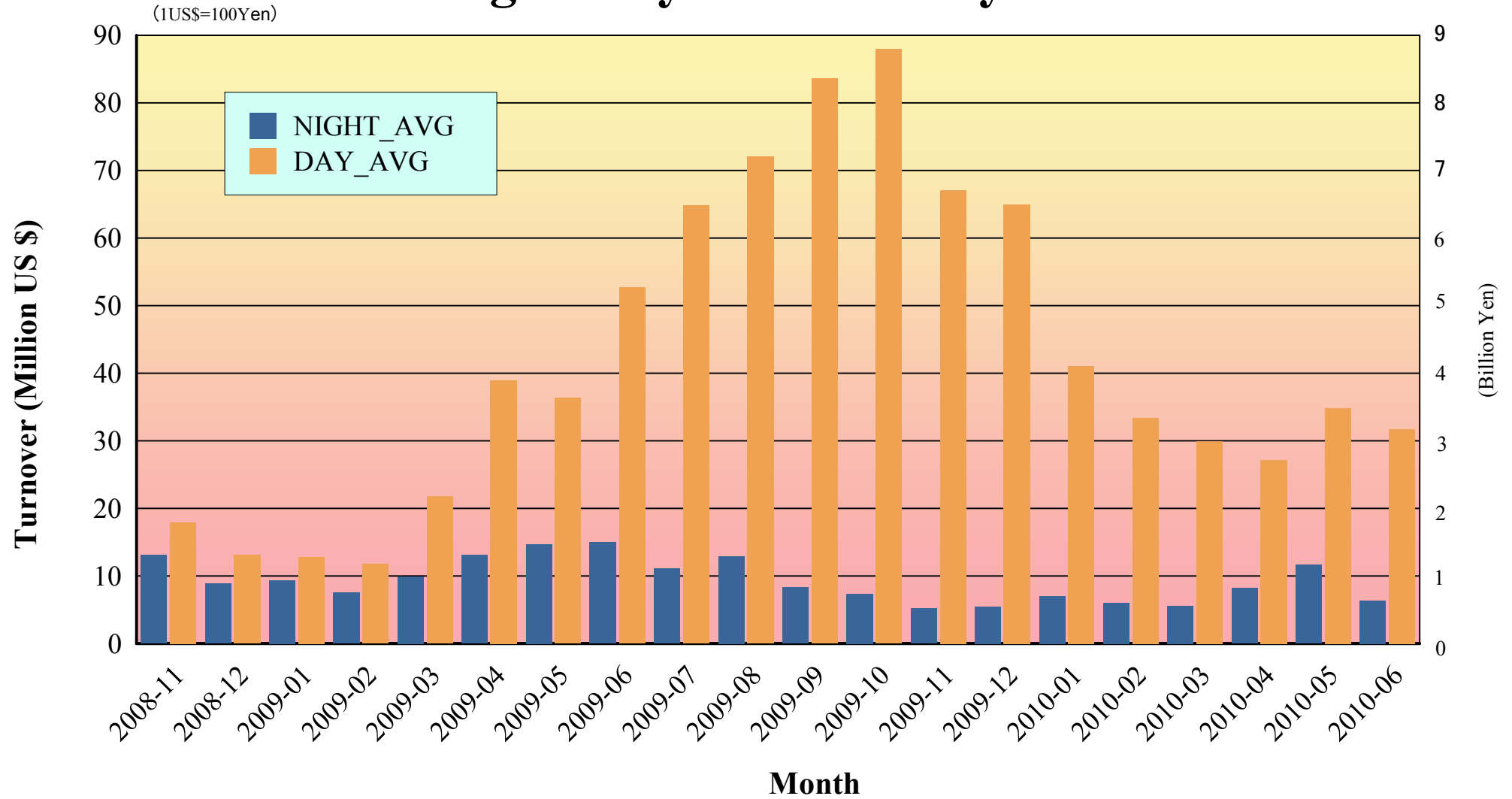
# Daily Turnover on DAY Session



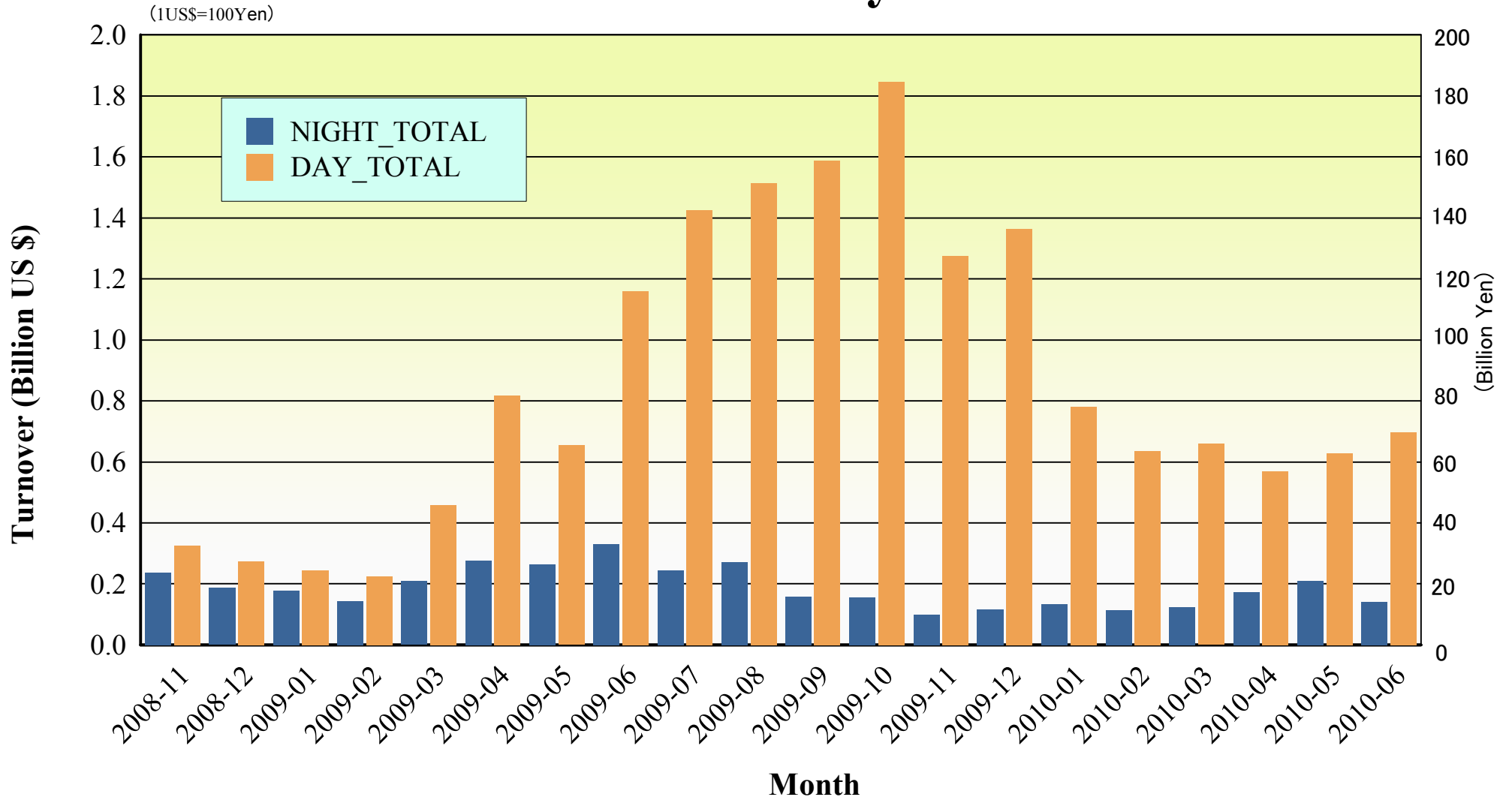
# Daily Turnover on NIGHT Session



# Average Daily Turnover by Month



# Total Turnover by Month



## "Daytime Session" Statistics

Nikkei 225 ( Jun-2010 )

**SELL**

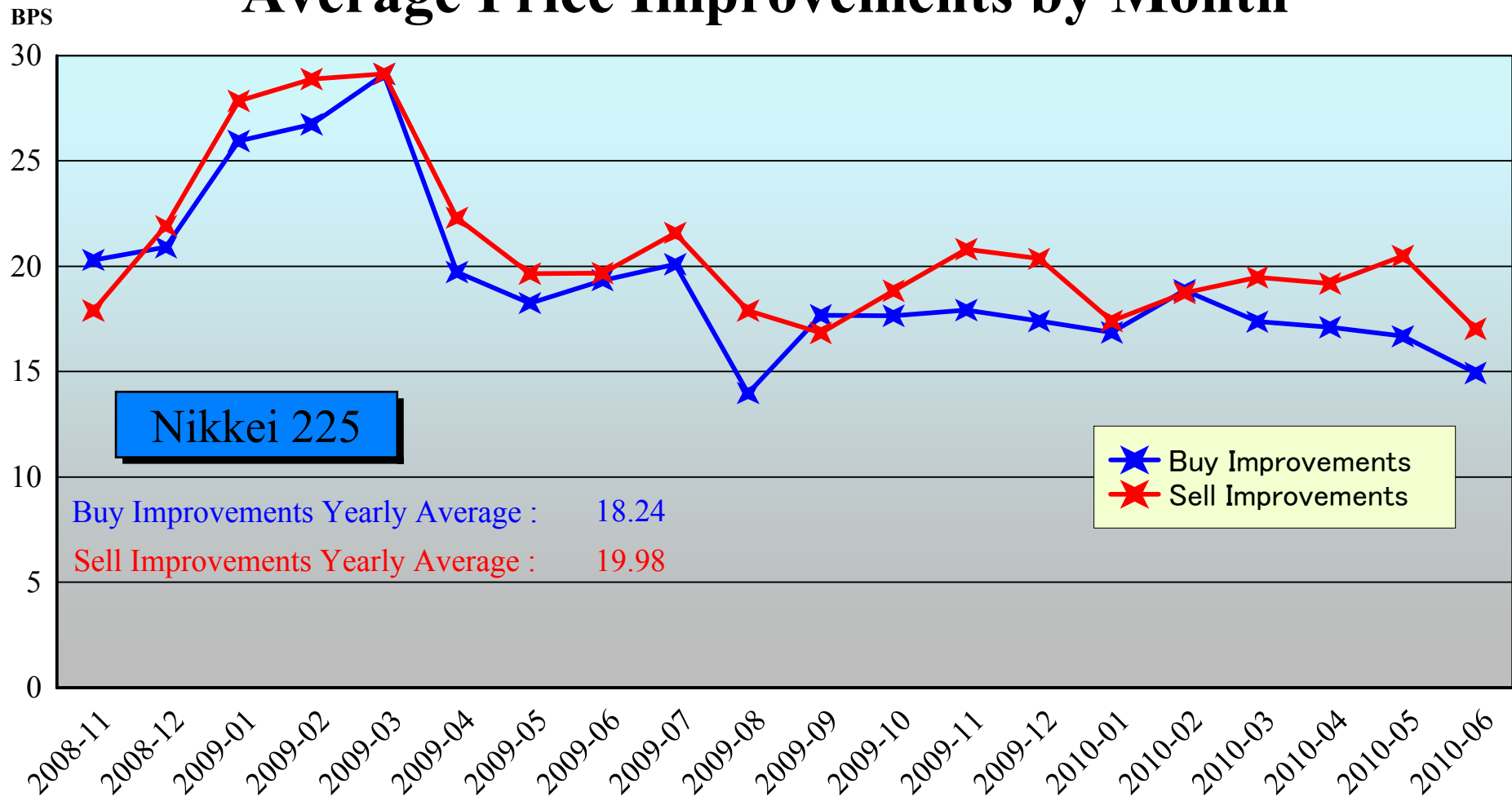
**BUY**

A. Worse Price Executions	1,718 (1.83%)	2,291 (2.44%)
B. Equal Price Executions	8,430 (8.97%)	10,068 (10.71%)
C. Better Price Executions	83,837 (89.20%)	81,626 (86.85%)
	<hr/>	
B + C	<b>98.17%</b>	<b>97.56%</b>
A'. Avg. Price Declines	<b>-9.98BPS</b>	<b>-11.34BPS</b>
C'. Avg. Price Improvements	<b>17.03BPS</b>	<b>14.93BPS</b>

Note1: Excluded the executions from before 9AM, lunch break, and after 3PM

Note2: Avg. Price Improvements are based on Japannext vs. Primary Exchange prices

## Average Price Improvements by Month



Note1: Excluded the executions from before 9AM, lunch break, and after 3PM

Note2: Avg. Price Improvements are based on Japannext vs. Primary Exchange prices

# Day/Night Monthly Turnover for Top 25 Names ( Jun-2010 )

(DAY Session)

	SYMBOL	DESCRIPTION	TURNOVER (Million US\$ 1US\$=1Yen)
1	8411	MIZUHO FINANCIAL GROUP, INC.	26.98
2	7203	TOYOTA MOTOR CORP.	16.03
3	9202	ALL NIPPON AIRWAYS CO., LTD.	11.67
4	8306	MITSUBISHI UFJ FINANCIAL GROUP, INC.	11.58
5	9432	NIPPON TELEGRAPH & TELEPHONE CORP.	11.19
6	7011	MITSUBISHI HEAVY IND., LTD.	10.70
7	6501	HITACHI, LTD.	10.25
8	4502	TAKEDA PHARMACEUTICAL CO., LTD.	9.28
9	5405	SUMITOMO METAL IND., LTD.	9.09
10	9531	TOKYO GAS CO., LTD.	8.67
11	7202	ISUZU MOTORS LTD.	7.95
12	6762	TDK CORP.	7.85
13	7751	CANON INC.	7.10
14	9101	NIPPON YUSEN K.K.	7.02
15	6702	FUJITSU LTD.	6.82
16	7261	MAZDA MOTOR CORP.	6.69
17	7201	NISSAN MOTOR CO., LTD.	6.66
18	8035	TOKYO ELECTRON LTD.	6.66
19	5401	NIPPON STEEL CORP.	6.18
20	6954	FANUC LTD.	6.11
21	8058	MITSUBISHI CORP.	5.54
22	8604	NOMURA HOLDINGS, INC.	5.36
23	6971	KYOCERA CORP.	5.32
24	6502	TOSHIBA CORP.	5.27
25	8002	MARUBENI CORP.	4.97

(NIGHT Session)

highlight : "Common" names for Day & NightTime

	SYMBOL	DESCRIPTION	TURNOVER (Million US\$ 1US\$=1Yen)
1	8306	MITSUBISHI UFJ FINANCIAL GROUP, INC.	8.25
2	8411	MIZUHO FINANCIAL GROUP, INC.	6.98
3	7203	TOYOTA MOTOR CORP.	5.86
4	8316	SUMITOMO MITSUI FINANCIAL GROUP, INC.	5.48
5	8031	MITSUI & CO., LTD.	4.66
6	7974	NINTENDO CO., LTD.	4.64
7	6758	SONY CORP.	3.87
8	6501	HITACHI, LTD.	3.55
9	3236	PROPERST CO., LTD.	2.94
10	2766	JAPAN WIND DEVELOPMENT CO., LTD.	2.83
11	2342	TRANS GENIC INC.	2.32
12	8058	MITSUBISHI CORP.	2.00
13	6502	TOSHIBA CORP.	1.99
14	8473	SBI HOLDINGS, INC.	1.89
15	6665	ELPIDA MEMORY, INC.	1.89
16	1321	NIKKEI 225 EXCHANGE TRADED FUND	1.75
17	7751	CANON INC.	1.75
18	7201	NISSAN MOTOR CO., LTD.	1.60
19	6752	PANASONIC CORP.	1.58
20	9984	SOFTBANK CORP.	1.37
21	3641	PAPYLESS CO., LTD.	1.36
22	8604	NOMURA HOLDINGS, INC.	1.36
23	8900	SEI CREST CO., LTD.	1.34
24	6301	KOMATSU LTD.	1.29
25	3606	RENOWN INC.	1.28



# Improvements of Monthly Turnover for Top 25 Names ( Jun-2010 )

(Daytime Session)

	RIC	NAME	Sell Executions							Improve Avg. BPS	Buy Executions							Improve Avg. BPS
			Worse(A)		Equal(B)		Better(C)		(B) + (C)		Worse(A)		Equal(B)		Better(C)		(B) + (C)	
1	8411.T	MIZUHO	18	0.43%	35	0.84%	4,121	98.73%	99.57%	37.39	29	0.69%	107	2.56%	4,038	96.74%	99.31%	27.74
2	7203.T	TOYOTA	39	2.50%	172	11.02%	1,350	86.48%	97.50%	10.23	69	4.42%	227	14.54%	1,265	81.04%	95.58%	9.03
3	9202.T	ANA	6	0.53%	10	0.89%	1,110	98.58%	99.47%	15.60	7	0.62%	9	0.80%	1,110	98.58%	99.38%	20.14
4	8306.T	MUFG	35	1.25%	128	4.58%	2,631	94.17%	98.75%	12.67	19	0.68%	396	14.17%	2,379	85.15%	99.32%	13.73
5	9432.T	NTT	7	0.73%	132	13.82%	816	85.45%	99.27%	9.36	17	1.78%	86	9.01%	852	89.21%	98.22%	6.80
6	7011.T	MHI	9	1.02%	28	3.16%	848	95.82%	98.98%	13.77	5	0.56%	24	2.71%	856	96.72%	99.44%	18.37
7	6501.T	HITACHI	2	0.24%	32	3.90%	786	95.85%	99.76%	16.03	12	1.46%	53	6.46%	755	92.07%	98.54%	14.82
8	4502.T	TAKEDAP	1	0.13%	20	2.53%	770	97.35%	99.87%	9.13	13	1.64%	128	16.18%	650	82.17%	98.36%	5.31
9	5405.T	SMI-MTI	6	0.74%	27	3.34%	776	95.92%	99.26%	26.49	7	0.87%	30	3.71%	772	95.43%	99.13%	22.22
10	9531.T	TKO-GAS	0	0.00%	31	2.96%	1,018	97.04%	100.00%	14.67	12	1.14%	46	4.39%	991	94.47%	98.86%	11.01
11	7202.T	ISUZU	13	1.88%	26	3.76%	653	94.36%	98.12%	19.69	9	1.30%	56	8.09%	627	90.61%	98.70%	19.32
12	6762.T	TDK	20	2.66%	27	3.59%	706	93.76%	97.34%	13.18	21	2.79%	40	5.31%	692	91.90%	97.21%	8.15
13	7751.T	CANON	10	1.22%	107	13.10%	700	85.68%	98.78%	9.01	13	1.59%	173	21.18%	631	77.23%	98.41%	8.35
14	9101.T	NYKLINE	18	2.43%	15	2.03%	707	95.54%	97.57%	17.98	4	0.54%	24	3.24%	712	96.22%	99.46%	13.22
15	6702.T	FUJITSU	12	2.18%	22	4.00%	516	93.82%	97.82%	8.98	13	2.36%	28	5.09%	509	92.55%	97.64%	10.96
16	7261.T	MAZDA	3	0.36%	47	5.70%	775	93.94%	99.64%	21.18	9	1.09%	69	8.36%	747	90.55%	98.91%	27.41
17	7201.T	NISSAN	23	1.41%	87	5.34%	1,518	93.24%	98.59%	8.38	28	1.72%	149	9.15%	1,451	89.13%	98.28%	8.94
18	8035.T	TKOELCN	2	0.40%	22	4.40%	476	95.20%	99.60%	10.68	13	2.60%	32	6.40%	455	91.00%	97.40%	10.42
19	5401.T	NPSTEEL	7	0.89%	1	0.13%	775	98.98%	99.11%	15.72	6	0.77%	14	1.79%	763	97.45%	99.23%	18.09
20	6954.T	FANUC	21	5.44%	22	5.70%	343	88.86%	94.56%	6.88	5	1.30%	35	9.07%	346	89.64%	98.70%	5.47
21	8058.T	MITBISI	66	6.13%	212	19.68%	799	74.19%	93.87%	4.73	57	5.29%	332	30.83%	688	63.88%	94.71%	5.22
22	8604.T	NOMRAHD	31	2.24%	142	10.27%	1,210	87.49%	97.76%	9.10	36	2.60%	91	6.58%	1,256	90.82%	97.40%	12.31
23	6971.T	KYOCERA	7	1.39%	80	15.87%	417	82.74%	98.61%	6.90	12	2.38%	56	11.11%	436	86.51%	97.62%	8.97
24	6502.T	TOSHIBA	6	1.11%	18	3.33%	516	95.56%	98.89%	13.56	9	1.67%	29	5.37%	502	92.96%	98.33%	9.94
25	8002.T	MARBENI	8	1.65%	25	5.15%	452	93.20%	98.35%	12.18	10	2.06%	20	4.12%	455	93.81%	97.94%	10.12

Note1: Excluded the executions from before 9AM, lunch break, and after 3PM

Note2: Avg. Price Improvements are based on Japannext vs. Primary Exchange prices